

SMPEB series



공간 절약

스파이럴 베벨기어를 적용한 직교형 감속기로, 출력축과 모터를 수직으로 위치시켜 공간절약 가능.

Space - saving

Right angle reducer using spiral bevel gear
Customer can locate the motor at 90 degree away from the reducer if required to save space.

고강성 & 고토크

Uncaged 니들롤러베어링을 사용하여 강성과 토크 향상.

High rigidity & torque

High rigidity & high torque was achieved by uncaged needle roller bearings.

어댑터-부싱 연결방식

다양한 모터에 취부 가능.

Adapter-bushing connection

Can be attached to any motor all over the world.

그리스 누유현상 없음

고점도 분리방지 그리스를 사용.

No grease leakage

Perfect solution by high viscosity anti-separation grease.

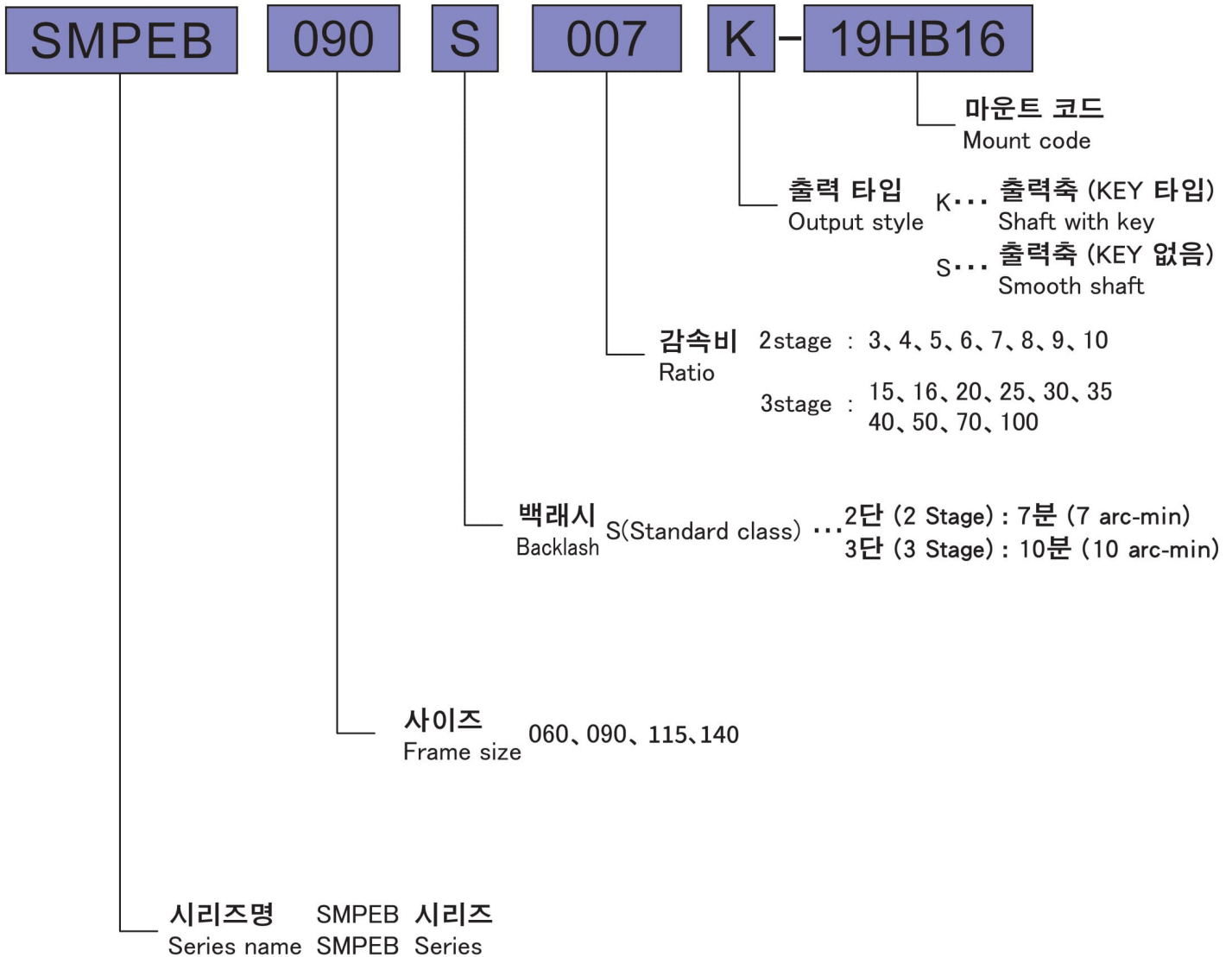
유지 보수 불필요

제품 수명 동안 그리스 교체 불필요 자유로운 설치 가능.

Maintenance-free

No need to replace the grease for the life time.
Can be attached in any position.

SMPEB series



Model No.		Unit	Stage	Ratio ¹	SMPEB060	SMPEB090	SMPEB115	SMPEB140
Rated Output Torque (Nominal Output torque)	T _{2N}	Nm	2	3	33	89	195	440
				4	39	110	210	460
				5	43	110	210	580
				6	43	108	160	530
				7	43	108	200	490
				8	43	79	190	420
				9	35	90	170	390
			3	10	30	88	170	370
				15	35	84	195	440
				16	39	100	210	460
				20	39	100	210	460
				25	43	110	210	580
				30	39	90	195	440
				35	43	108	200	580
				40	43	110	210	460
				50	43	110	210	580
				70	43	108	200	490
100	39	88	170	370				
Max. Acceleration Torque	T _{2B}	Nm	2,3	3~100	1.8 Times of Rated Output Torque			
Max. Output Torque Emergency Stop Torque	T _{2NOT}	Nm	2,3	3~100	3 Times of Rated Output Torque			
Nominal Input speed	n _{1n}	rpm	2,3	3~100	3,000	3,000	3,000	2,000
Max. Input speed	n _{1B}	rpm	2,3	3~100	6,000	6,000	6,000	5,000
Backlash (Standard class)		arcmin	2	3~10	≤7	≤7	≤7	≤7
			3	15~100	≤10	≤10	≤10	≤10
Torsional Rigidity		Nm/arcmin	2,3	3~100	5	12	23	38
Max. Radial load ²	F _{2rB}	N	2,3	3~100	930	2,350	5,100	8,100
Max. Axial load ²	F _{2aB}	N	2,3	3~100	860	1,700	3,900	8,200
Service life	L _H	hr	2,3	3~100	20,000	20,000	20,000	20,000
Noise level ³		dB(A)	2,3	3~100	≤ 63	≤ 65	≤ 68	≤ 70
Weight		kg	2	3~10	1.9	5.5	10.5	19.1
			3	15~100	2.2	6.8	9.7	19.6
Mass Moments of Inertia ⁴		kg cm ²	2	3~10	0.25	0.55	4.5	21.28
			3	15~100	0.16	0.7	2.1	14.74
Operating Temp. ⁵		°C	2,3	3~100	-10 ~ +90			
Lubrication			2,3	3~100	High temperature & Extreme pressure Lubricant			
Mounting position			2,3	3~100	All directions			
Efficiency	η	%	2	3~10	≥ 95			
			3	15~100	≥ 90			
Degree of protection			2,3	3~100	IP 65			

(1) Ratio (감속비) = Nin / Nout

(2) 기준 : 출력회전수 100rpm, 출력축 중앙 부하, 부하계수(Ka)=1, 연속운전 10,000시간

These values are based on the following conditions : 100 rpm at the output. Load applied to the middle of the output shaft.

Load coefficient(Ka)=1. Continuous operation(S1≒10,000hrs).

(3) 입력 회전수 3000 rpm, 무부하 운전상태에서 감속기 취부면에서 1m 떨어진 거리에서 측정 (모델에 따라 차이가 있을수 있습니다)

Noise level : A measurement 1m away from the reducer (with ratio10 or ratio 100), 3000 input rpm and at no load condition.

(Background noise 40dB(A)) With lower ratio and/or higher rpm, the noise level could be 3 to 5 dB higher.

(4) 관성모멘트 : 감속비 중 대표값 (i=1/5)

Moment of inertia : A measurement at the input shaft and representatives from each ratio.(i=1/5)

(5) 감속기 작동온도 : -10~+90 °C, 감속기 주위온도 -10~40°C

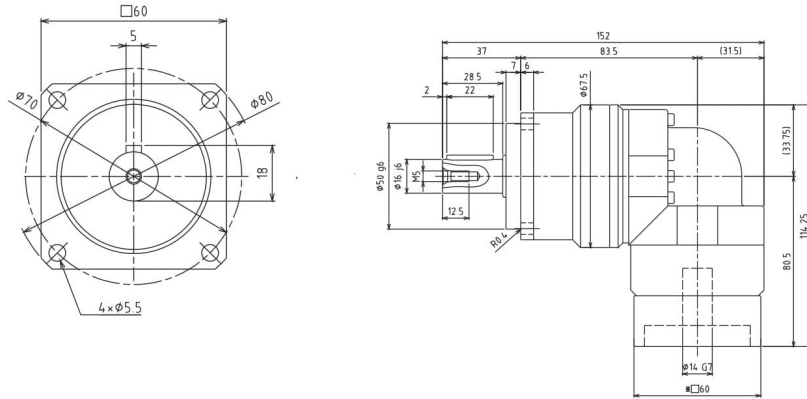
Operating temperature : Surface temperature of gear case in -10 °C~40 °C of ambient temperature.

※ 제품 성능 향상을 위해 사양은 별도의 고지 없이 변경될 수 있습니다.

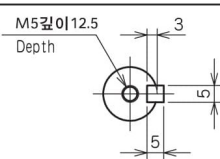
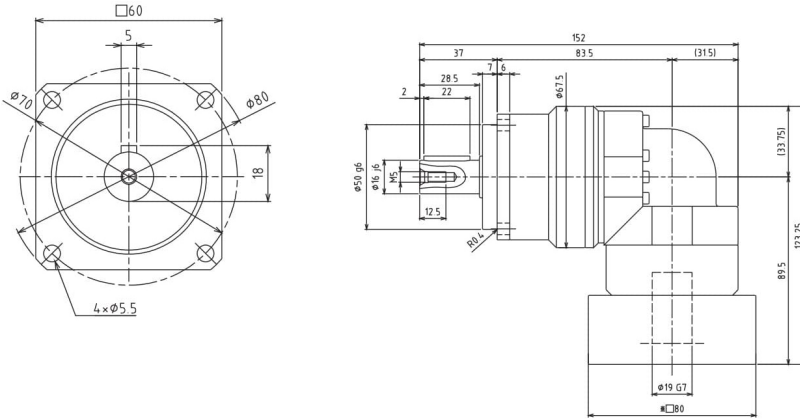
Specifications are subject to change without notice to improve product performances.

SMPEB 060 2단 2stage

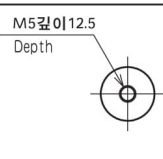
입력축 내경 Input shaft bore $\leq \phi 14$



입력축 내경 Input shaft bore $\leq \phi 19$



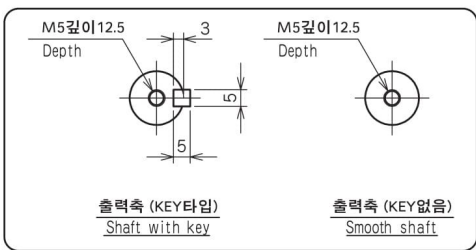
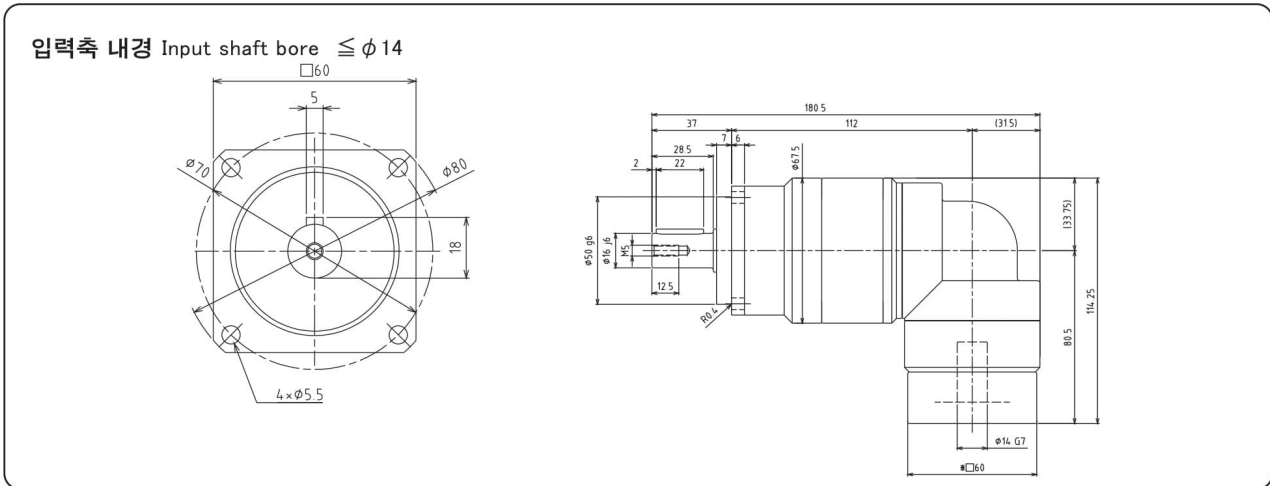
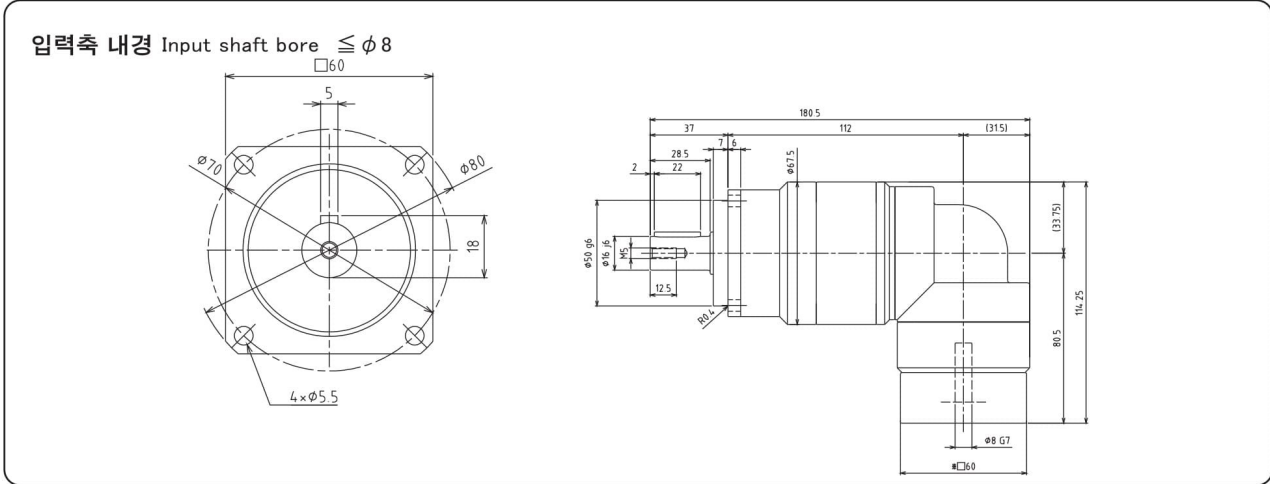
출력축 (KEY타입)
Shaft with key



출력축 (KEY없음)
Smooth shaft

- ※1 적용 모터에 따라 길이는 변경될 수 있습니다.
- ※2 모터 축과 감속기의 입력축 내경이 다를 경우에는 부싱이 삽입됩니다.
- ※1 Length will vary depending on motor.
- ※2 Bushing will be inserted to adapt to motor shaft.

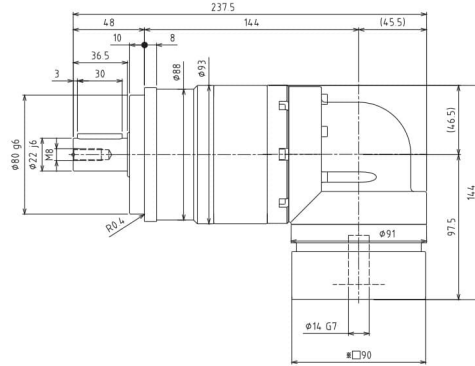
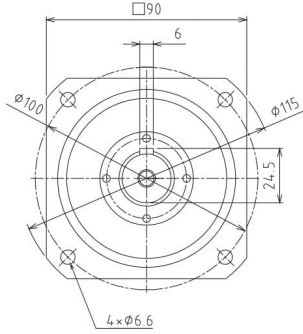
SMPEB 060 3단 3stage



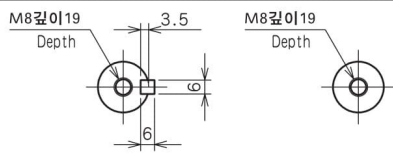
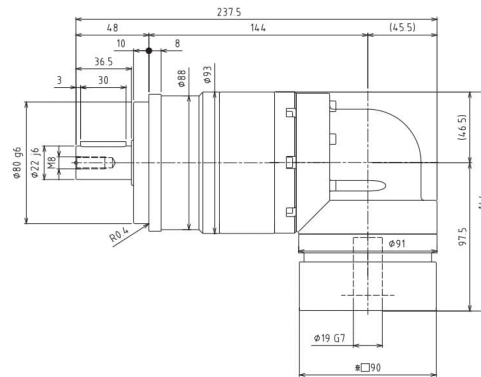
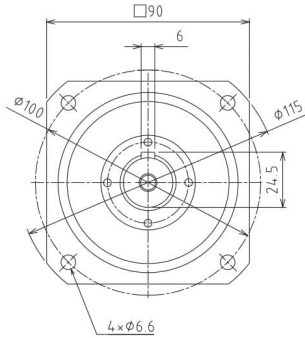
- ※ 1 적용 모터에 따라 길이는 변경될 수 있습니다.
- ※ 2 모터 축과 감속기의 입력축 내경이 다를 경우에는 부싱이 삽입됩니다.
- ※ 1 Length will vary depending on motor.
- ※ 2 Bushing will be inserted to adapt to motor shaft.

SMPEB 090 3단 3stage

입력축 내경 Input shaft bore $\leq \phi 14$



입력축 내경 Input shaft bore $\leq \phi 19$



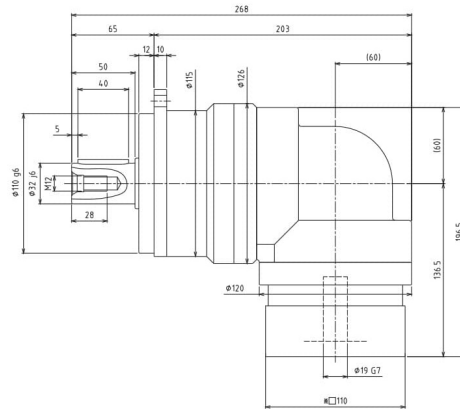
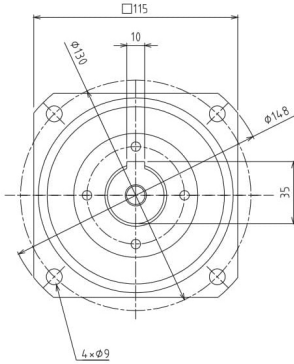
출력축 (KEY타입)
Shaft with key

출력축 (KEY없음)
Smooth shaft

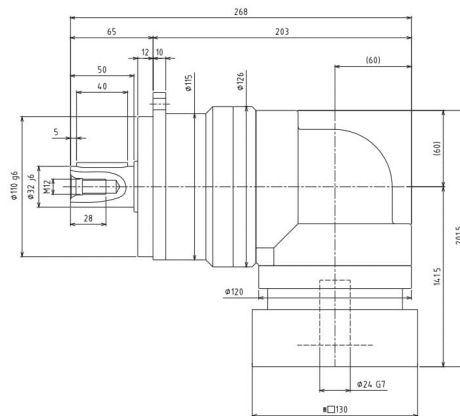
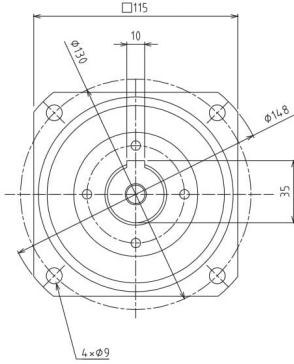
- ※ 1 적용 모터에 따라 길이는 변경될 수 있습니다.
- ※ 2 모터 축과 감속기의 입력축 내경이 다를 경우에는 부싱이 삽입됩니다.
- ※ 1 Length will vary depending on motor.
- ※ 2 Bushing will be inserted to adapt to motor shaft.

SMPEB 115 2단 2stage

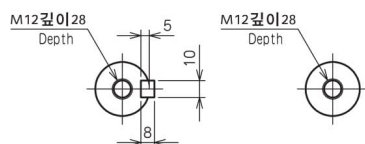
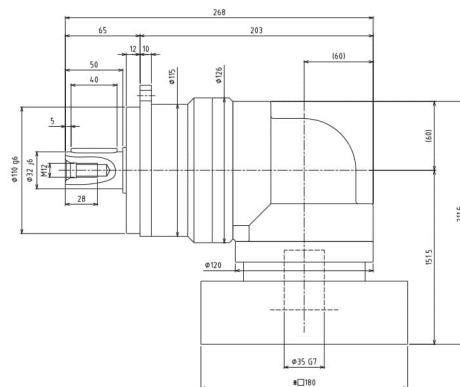
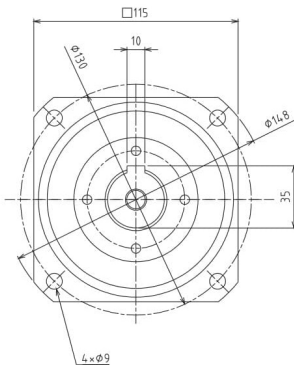
입력축 내경 Input shaft bore $\cong \phi 19$



입력축 내경 Input shaft bore $\cong \phi 24$



입력축 내경 Input shaft bore $\cong \phi 35$

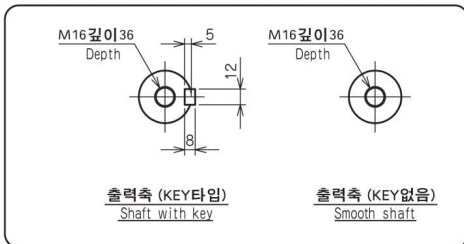
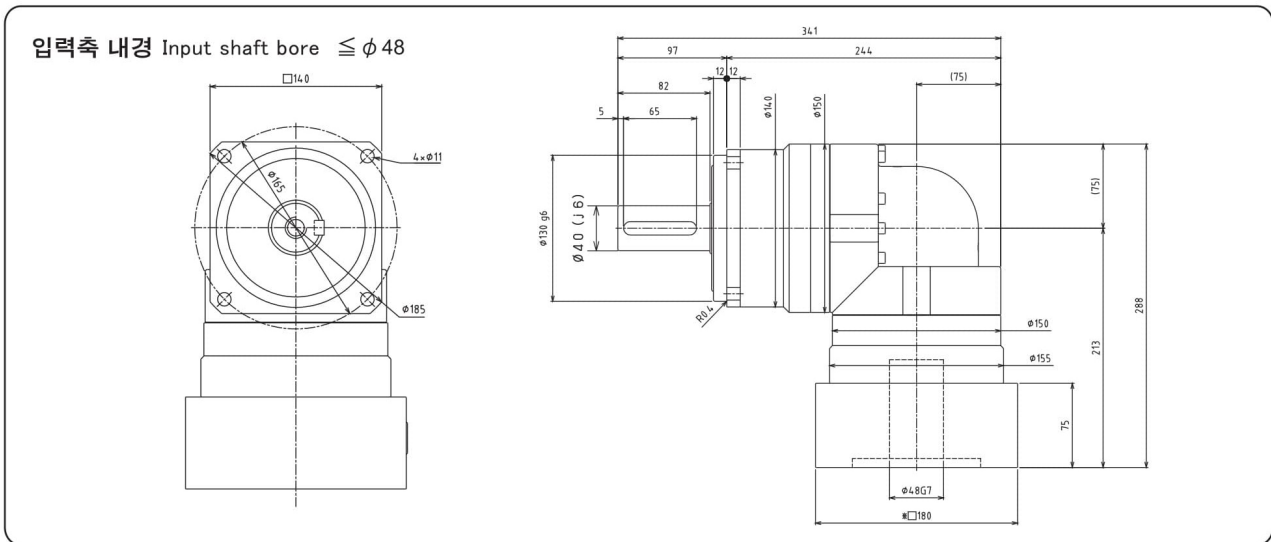
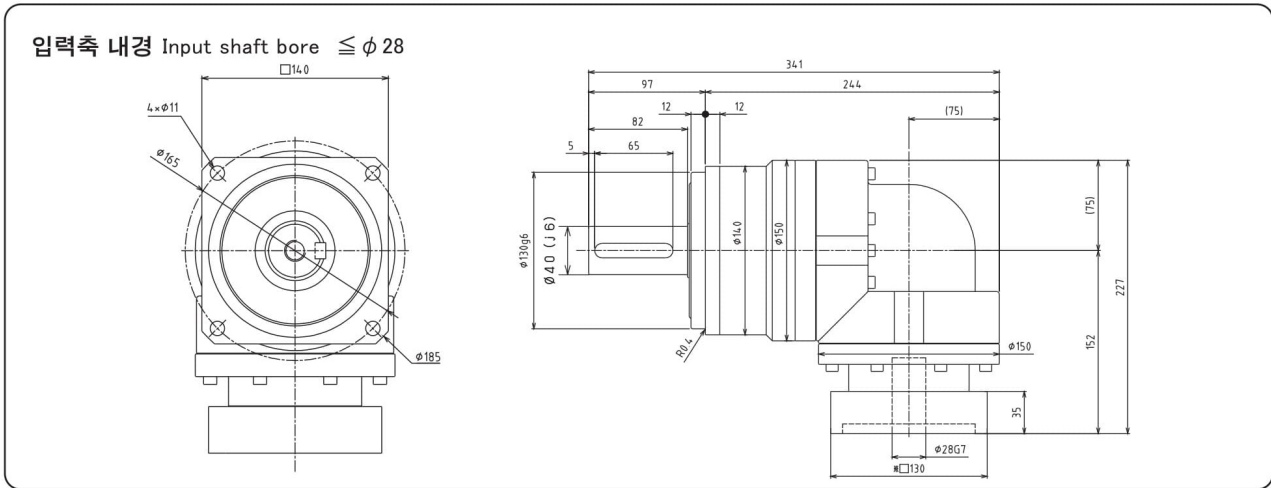


출력축 (KEY타입)
Shaft with key

출력축 (KEY없음)
Smooth shaft

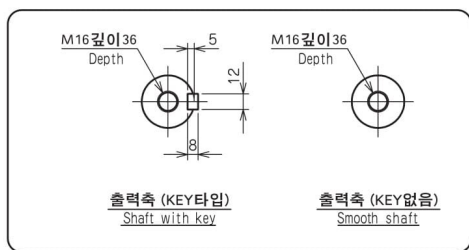
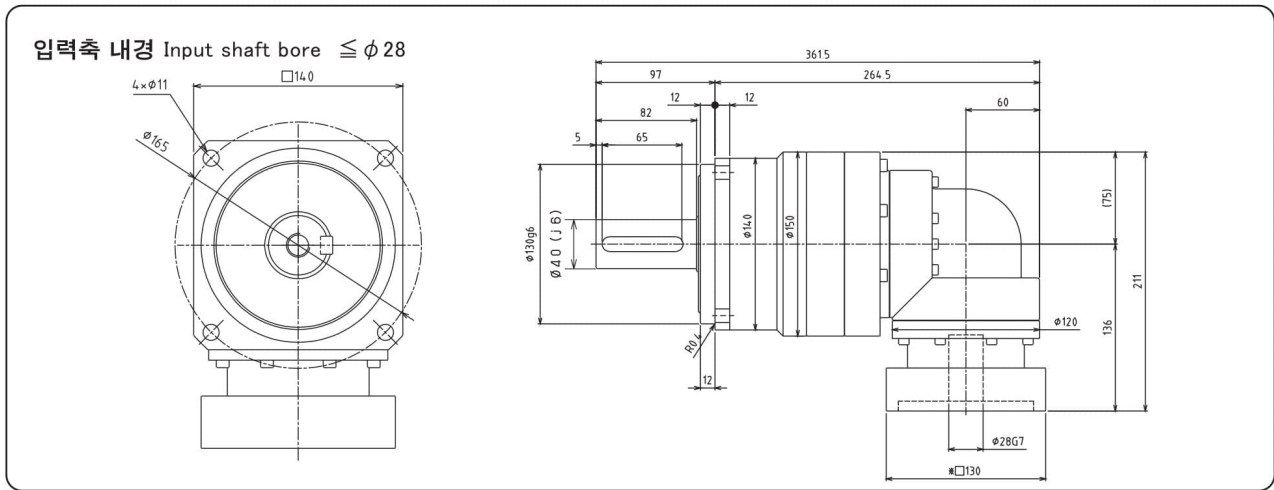
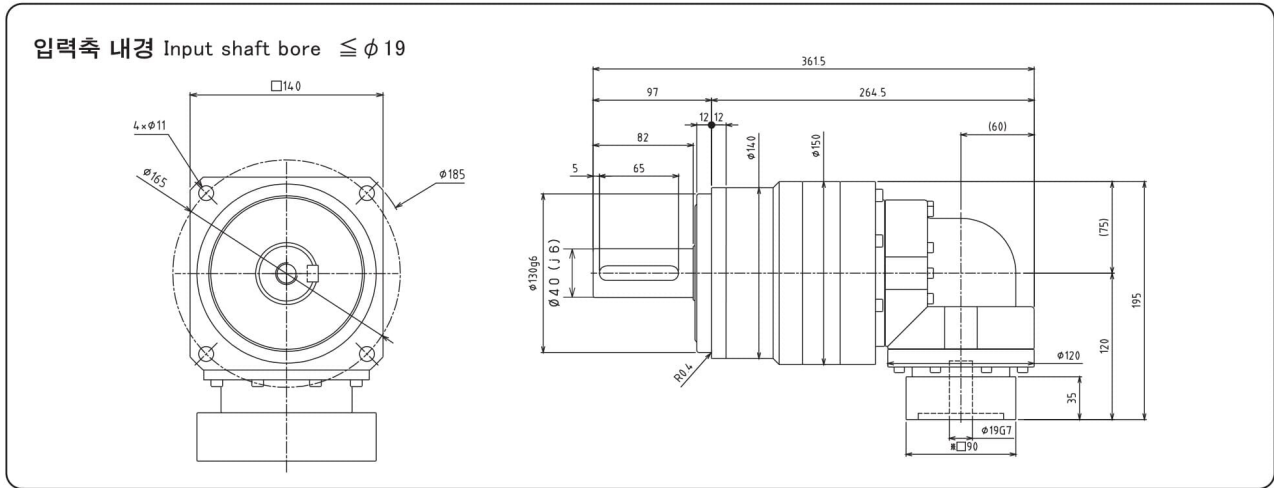
- ※ 1 적용 모터에 따라 길이는 변경될 수 있습니다.
- ※ 2 모터 축과 감속기의 입력축 내경이 다를 경우에는 부싱이 삽입됩니다.
- ※ 1 Length will vary depending on motor.
- ※ 2 Bushing will be inserted to adapt to motor shaft.

SMPEB 140 2단 2stage



- ※ 1 적용 모터에 따라 길이는 변경될 수 있습니다.
- ※ 2 모터 축과 감속기의 입력축 내경이 다를 경우에는 부싱이 삽입됩니다.
- ※ 1 Length will vary depending on motor.
- ※ 2 Bushing will be inserted to adapt to motor shaft.

SMPEB 140 3단 3stage



- ※ 1 적용 모터에 따라 길이는 변경될 수 있습니다.
- ※ 2 모터 축과 감속기의 입력축 내경이 다를 경우에는 부싱이 삽입됩니다.
- ※ 1 Length will vary depending on motor.
- ※ 2 Busing will be inserted to adapt to motor shaft.