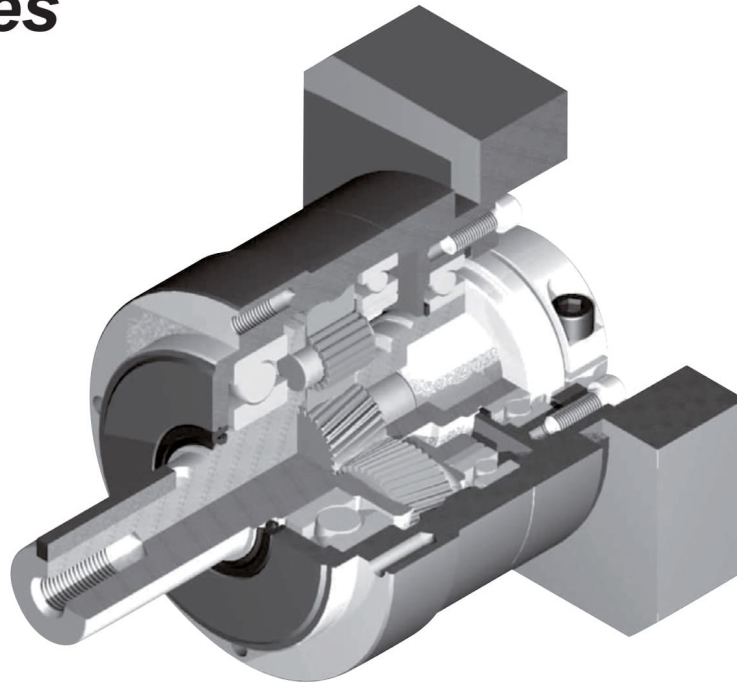


SML series



정속한 운전

헬리컬 기어 적용으로 저진동, 저소음 실현.

고정밀

표준 백래시 ≤ 5 arc-min.

고강성 & 고토크

Uncaged 니들롤러베어링을 사용하여 강성과 토크 향상.

어댑터-부싱 연결방식

다양한 모터에 취부 가능.

그리스 누유현상 없음

고점도 분리방지 그리스를 사용.

유지 보수 불필요

제품 수명 동안 그리스 교체 불필요 자유로운 설치 가능.

Quiet operation

Helical gears contribute to reduce vibration and noise.

High precision

Standard backlash is 5 arc-min, ideal for precision control.

High rigidity & torque

High rigidity & high torque were achieved by uncaged needle roller bearings.

Adapter-bushing connection

Can be attached to any motor all over the world.

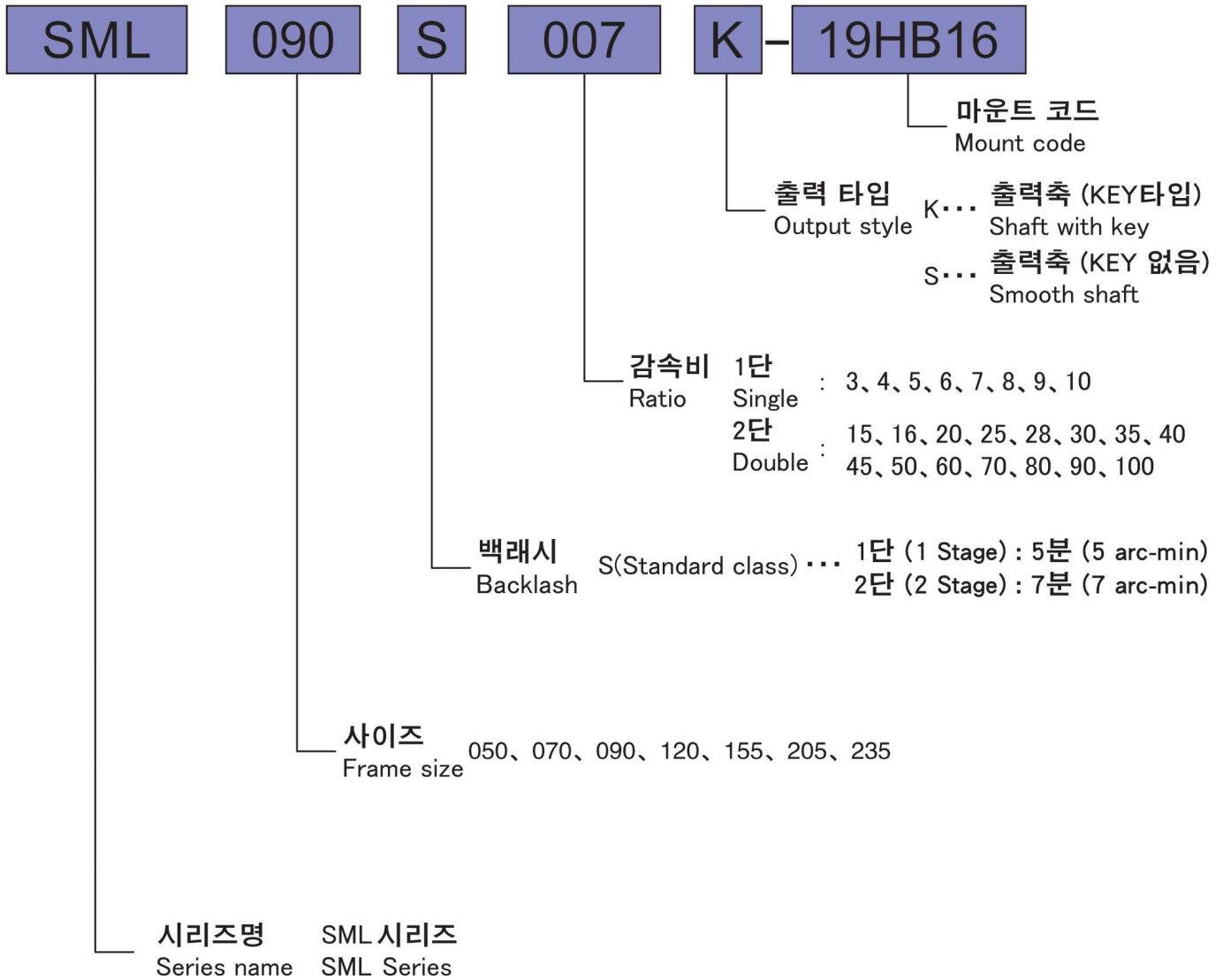
No grease leakage

Perfect solution using high viscosity anti-separation grease.

Maintenance-free

No need to replace the grease for the life of the unit.
Can be attached in any position.

SML series



Model No.		Unit	Stage	Ratio ¹	SML050	SML070	SML090	SML120	SML155	SML205	SML235	
Rated Output Torque (Nominal Output torque)	T _{2N}	Nm	1	3	13	39	106	195	440	750	1,500	
				4	16	39	110	210	460	950	1,600	
				5	19	43	110	210	580	1,200	2,000	
				6	15	43	108	160	530	1,100	1,600	
				7	15	43	108	200	490	1,000	1,500	
				8	15	43	79	190	420	900	1,200	
				9	15	35	90	170	390	800	1,100	
				10	15	30	88	170	370	800	1,100	
				2	15	13	35	84	195	440	750	1,450
					16	16	39	100	210	460	950	1,800
			20		16	39	100	210	460	950	1,900	
			25		19	43	110	210	580	1,200	2,000	
			28		18	43	108	200	580	1,200	1,500	
			30		13	39	90	195	440	900	1,500	
			35		18	43	108	200	580	1,200	1,500	
			40		19	43	110	210	460	1,200	2,000	
			45		17	39	90	170	580	1,200	1,100	
			50		19	43	110	210	580	1,200	2,000	
			60	18	43	108	160	580	1,200	1,600		
			70	18	43	108	200	490	1,100	1,500		
80	17	43	79	190	420	900	1,200					
90	17	39	90	170	390	800	1,100					
100	17	39	88	170	370	800	1,100					
Max. Acceleration Torque	T _{2B}	Nm	1,2	3~100	1.8 Times of Rated Output Torque							
Max. Output Torque Emergency Stop Torque	T _{2NOT}	Nm	1,2	3~100	3 Times of Rated Output Torque							
Nominal Input speed	n _{1n}	rpm	1,2	3~100	3,000	3,000	3,000	3,000	2,000	1,500	1,000	
Max. Input speed	n _{1B}	rpm	1,2	3~100	6,000	6,000	6,000	6,000	5,000	4,000	3,000	
Backlash (Standard class)		arcmin	1	3~10	≤5	≤5	≤5	≤5	≤5	≤5	≤5	
			2	15~100	≤7	≤7	≤7	≤7	≤7	≤7	≤7	
Torsional Rigidity		Nm/arcmin	1,2	3~100	2	5	12	23	38	110	210	
Max. Radial load ²	F _{2rB}	N	1,2	3~100	570	1,100	2,150	3,600	7,500	10,500	10,500	
Max. Axial load ²	F _{2aB}	N	1,2	3~100	300	600	1,800	2,500	3,000	6,000	11,300	
Service life	L _H	hr	1,2	3~100	20,000	20,000	20,000	20,000	20,000	20,000	20,000	
Noise level ³		dB(A)	1,2	3~100	≤ 56	≤ 58	≤ 60	≤ 63	≤ 65	≤ 67	≤ 70	
Weight		kg	1	3~10	0.6	1.4	3.7	8	16	36	53	
			2	15~100	0.7	1.6	4.2	8.9	17	37	54	
Mass Moments of Inertia ⁴		kg cm ²	1	3~10	0.03	0.16	0.86	3.6	14	44	52	
			2	15~100	0.03	0.13	0.71	2.8	11	34	35	
Operating Temp. ⁵		°C	1,2	3~100	-10 ~ +90							
Lubrication			1,2	3~100	High temperature & Extreme pressure Lubricant							
Mounting position			1,2	3~100	All directions							
Efficiency	η	%	1	3~10	≥ 97							
			2	15~100	≥ 94							
Degree of protection			1,2	3~100	IP 65							

(1) Ratio (감속비) = Nin / Nout

(2) 기준 : 출력회전수 100rpm, 출력축 중앙 부하, 부하계수(Ka)=1, 연속운전 10,000시간

These values are based on the following conditions : 100 rpm at the output. Load applied to the middle of the output shaft.

Load coefficient(Ka)=1. Continuous operation(S1≒10,000hrs).

(3) 입력 회전수 3000 rpm, 무부하 운전상태에서 감속기 취부면에서 1m 떨어진 거리에서 측정 (모델에 따라 차이가 있을수 있습니다)

Noise level : A measurement 1m away from the reducer (with ratio10 or ratio 100), 3000 input rpm and at no load condition.

(Background noise 40dB(A)) With lower ratio and/or higher rpm, the noise level could be 3 to 5 dB higher.

(4) 관성모멘트 : 감속비 중 대표값 (i=1/5)

Moment of inertia : A measurement at the input shaft and representatives from each ratio.(i=1/5)

(5) 감속기 작동온도 : -10~+90 °C, 감속기 주위온도 -10~40°C

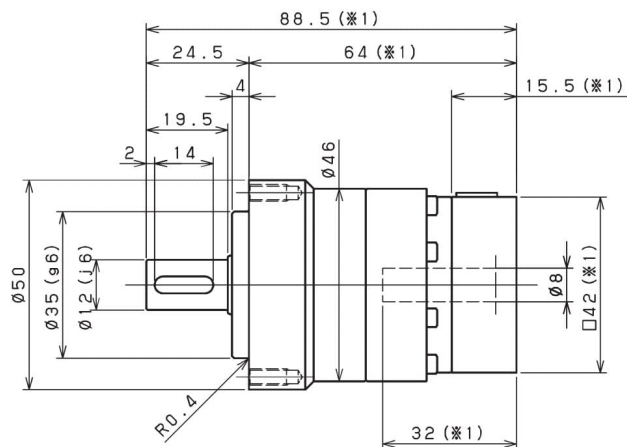
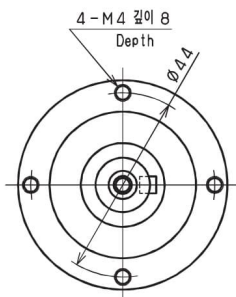
Operating temperature : Surface temperature of gear case in -10 °C~40 °C of ambient temperature.

※ 제품 성능 향상을 위해 사양은 별도의 고지 없이 변경될 수 있습니다.

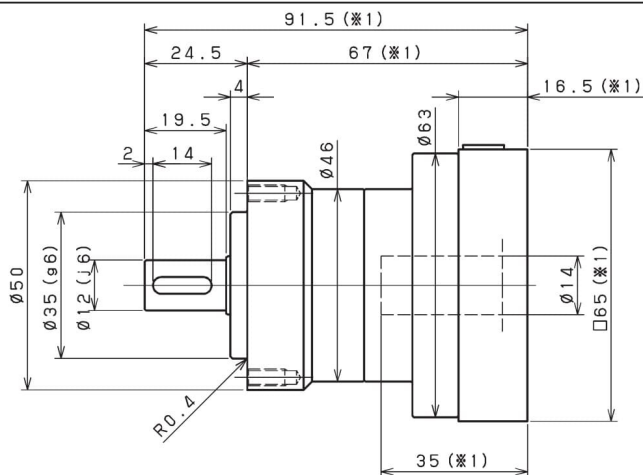
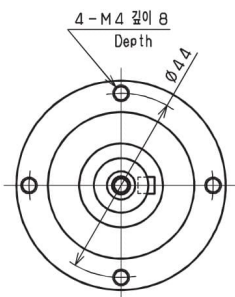
Specifications are subject to change without notice to improve product performances.

SML 050 1단 1stage

입력축 내경 Input shaft bore $\leq \phi 8$

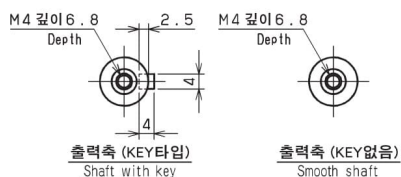
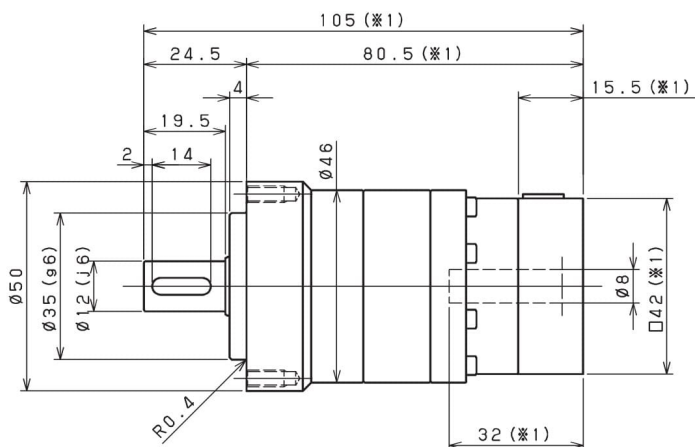
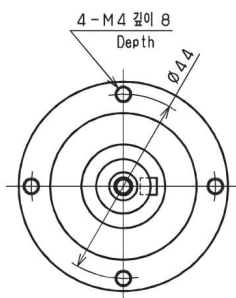


입력축 내경 Input shaft bore $\leq \phi 14$



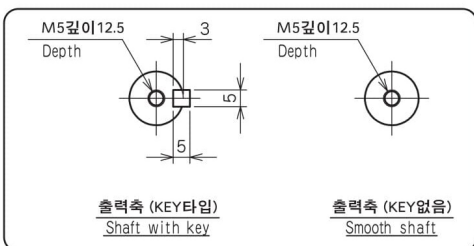
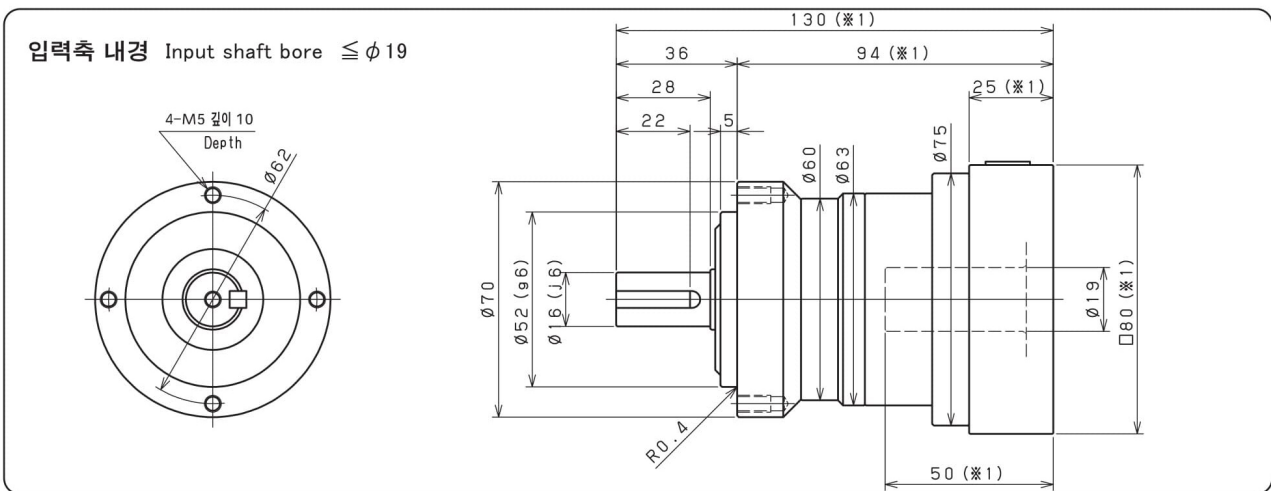
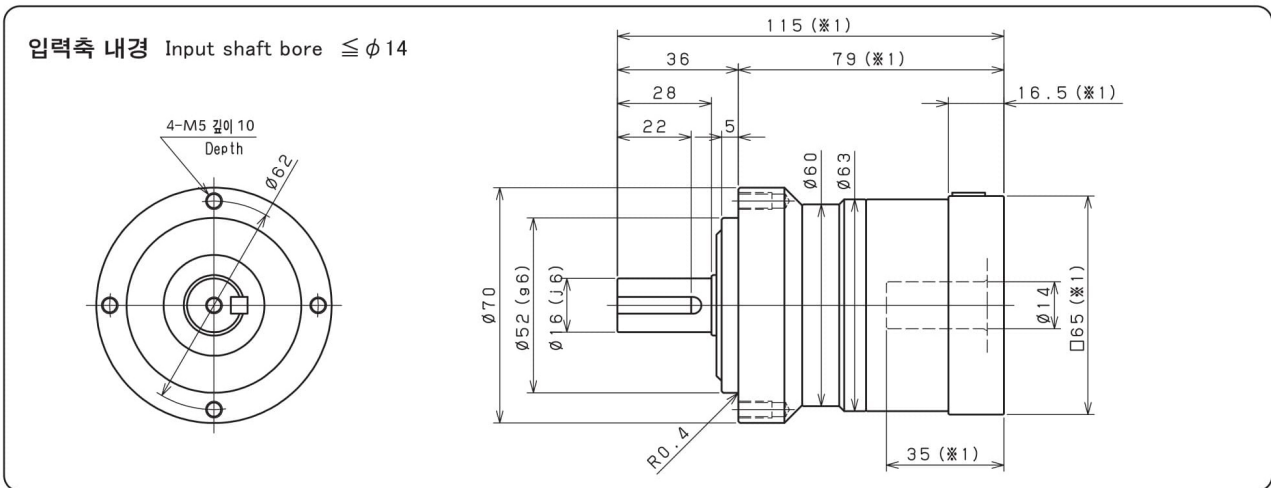
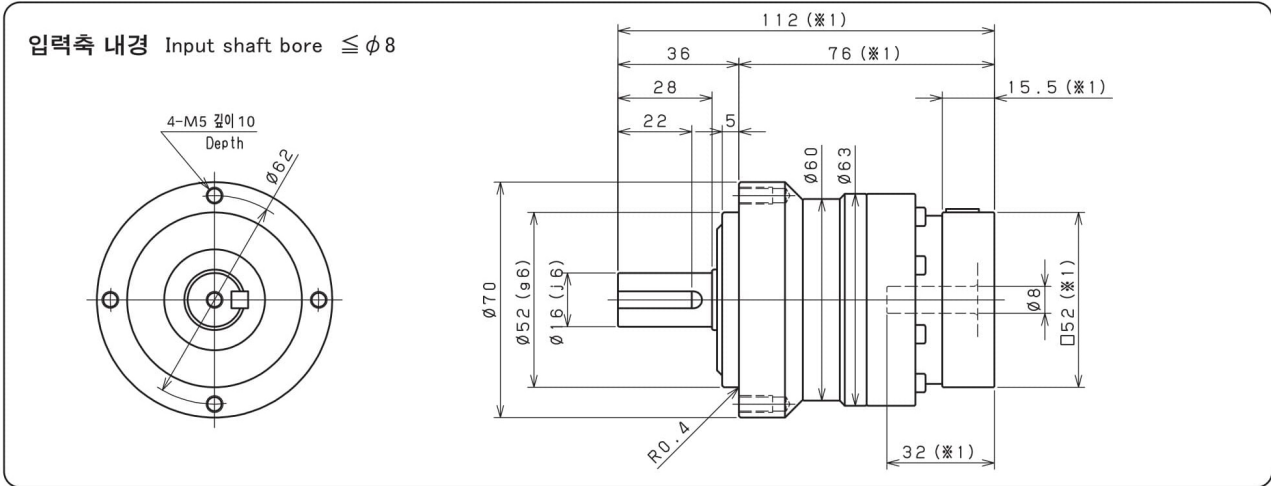
SML 050 2단 2stage

입력축 내경 Input shaft bore $\leq \phi 8$



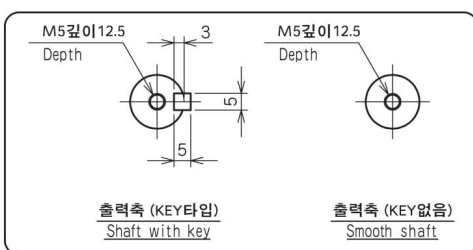
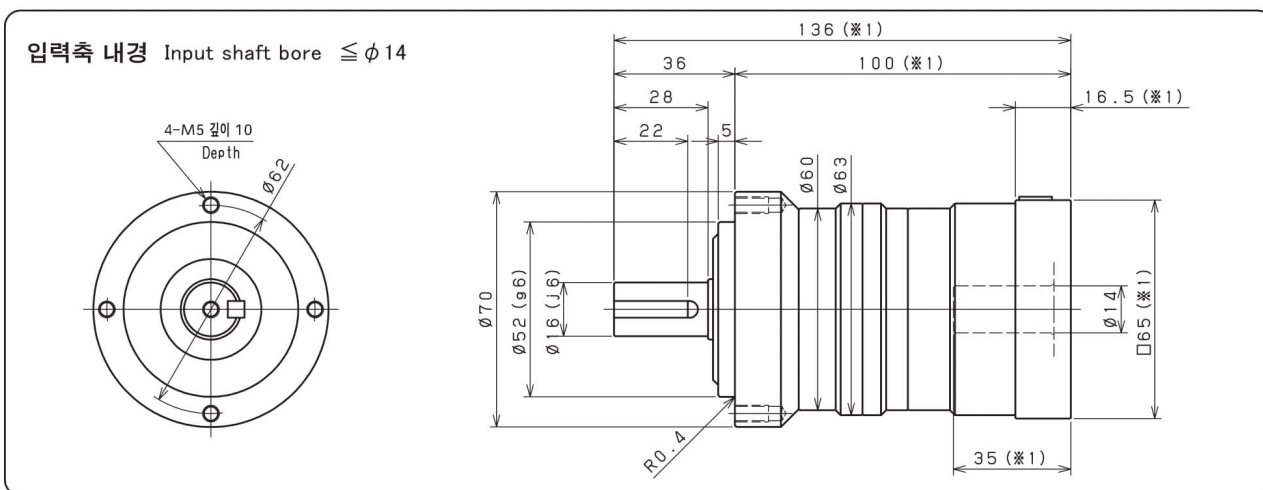
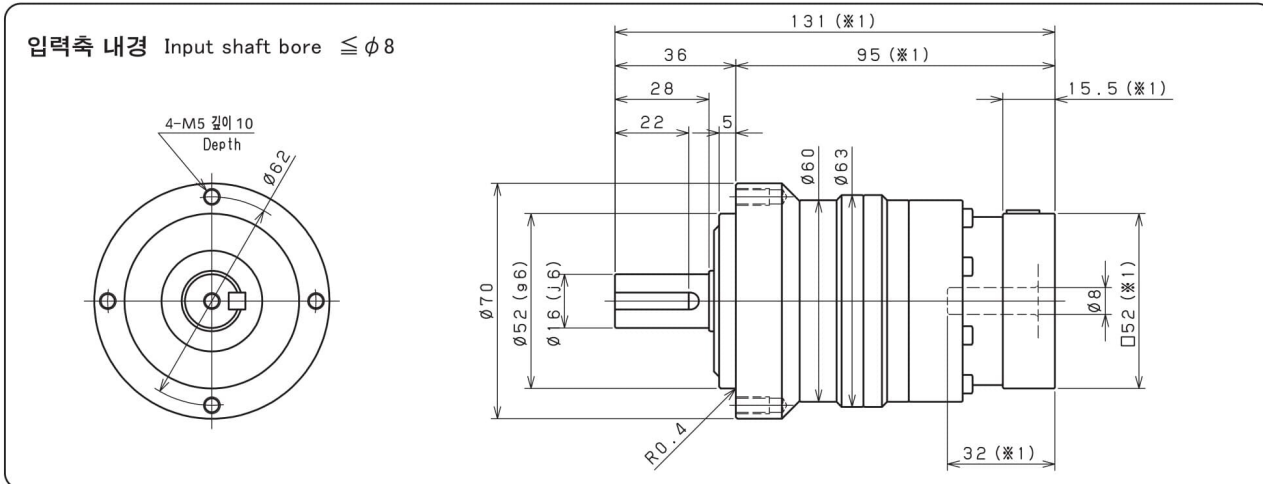
- ※ 1 적용 모터에 따라 길이는 변경될 수 있습니다.
- ※ 2 모터 축과 감속기의 입력축 내경이 다를 경우에는 부싱이 삽입됩니다.
- ※ 1 Length will vary depending on motor.
- ※ 2 Bushing will be inserted to adapt to motor shaft.

SML 070 1단 1stage



- ※1 적용 모터에 따라 길이는 변경될 수 있습니다.
- ※2 모터 축과 감속기의 입력축 내경이 다를 경우에는 부싱이 삽입됩니다.
- ※1 Length will vary depending on motor.
- ※2 Bushing will be inserted to adapt to motor shaft.

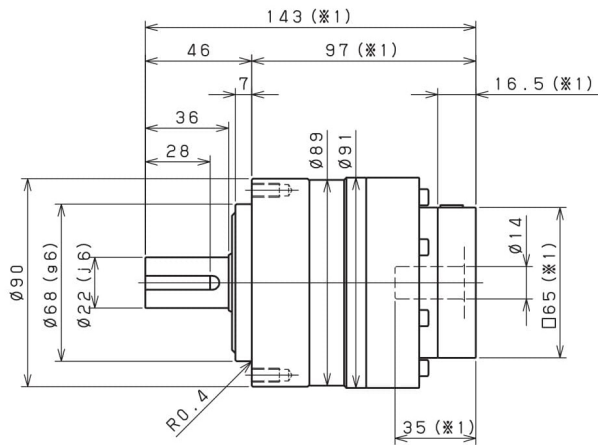
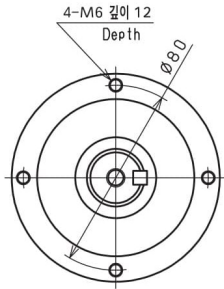
SML 070 2단 2stage



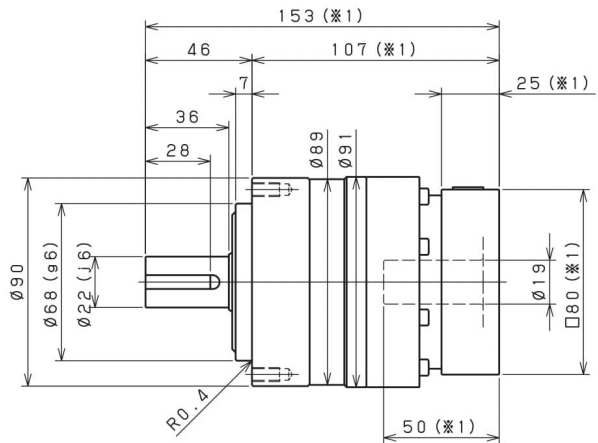
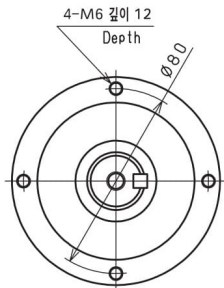
- ※1 적용 모터에 따라 길이는 변경될 수 있습니다.
- ※2 모터 축과 감속기의 입력축 내경이 다를 경우에는 부싱이 삽입됩니다.
- ※1 Length will vary depending on motor.
- ※2 Bushing will be inserted to adapt to motor shaft.

SML 090 1단 1stage

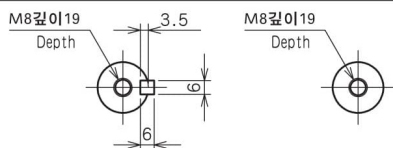
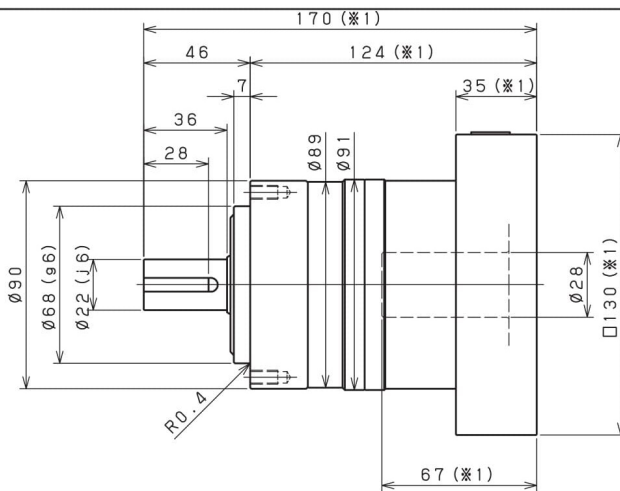
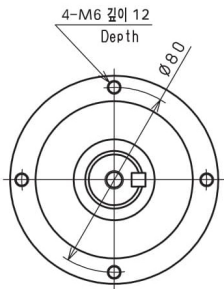
입력축 내경 Input shaft bore $\leq \phi 14$



입력축 내경 Input shaft bore $\leq \phi 19$



입력축 내경 Input shaft bore $\leq \phi 28$



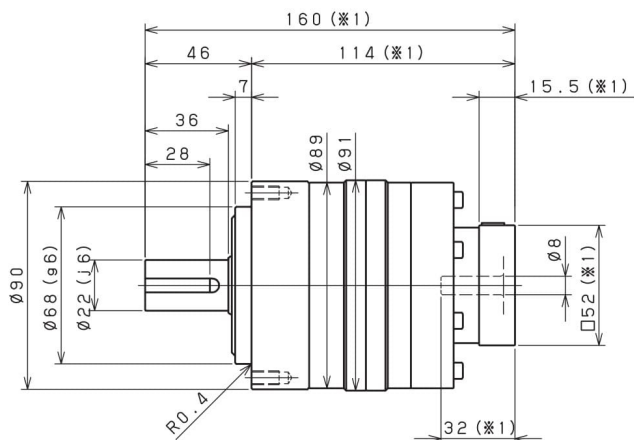
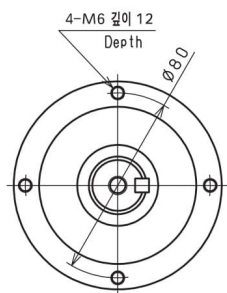
출력축 (KEY타입)
Shaft with key

출력축 (KEY없음)
Smooth shaft

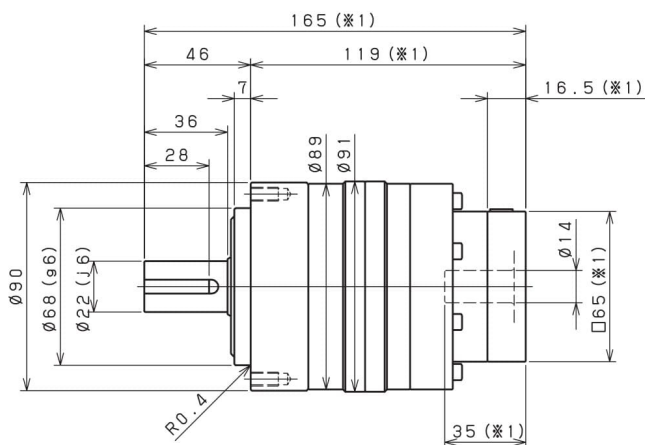
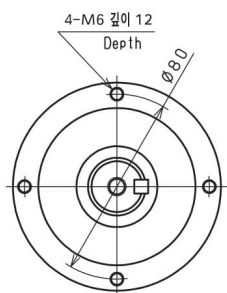
- ※1 적용 모터에 따라 길이는 변경될 수 있습니다.
- ※2 모터 축과 감속기의 입력축 내경이 다를 경우에는 부싱이 삽입됩니다.
- ※1 Length will vary depending on motor.
- ※2 Bushing will be inserted to adapt to motor shaft.

SML 090 2단 2stage

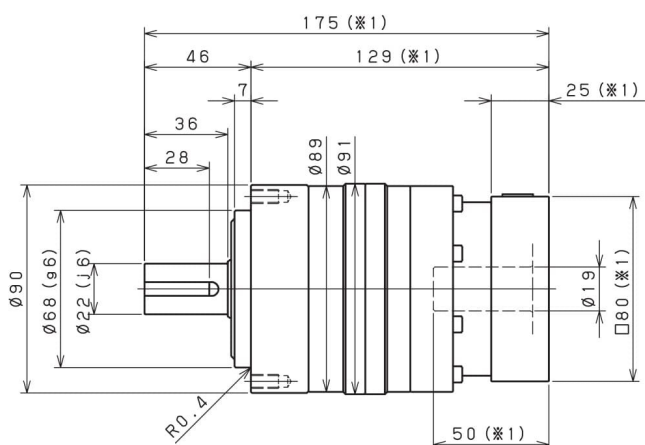
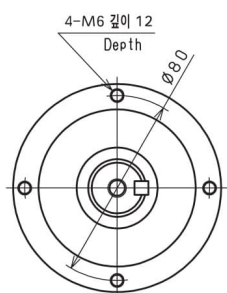
입력축 내경 Input shaft bore $\leq \phi 8$



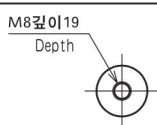
입력축 내경 Input shaft bore $\leq \phi 14$



입력축 내경 Input shaft bore $\leq \phi 19$



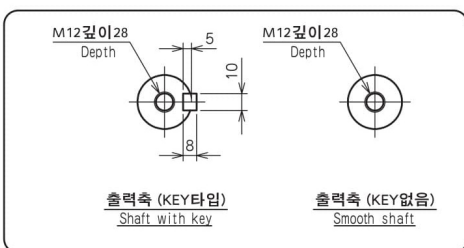
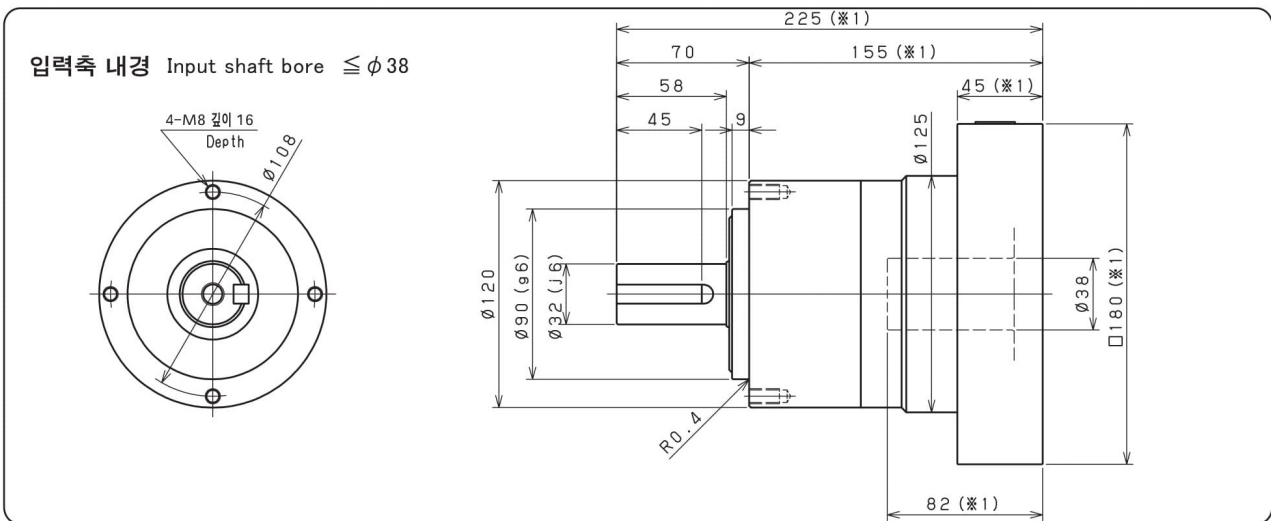
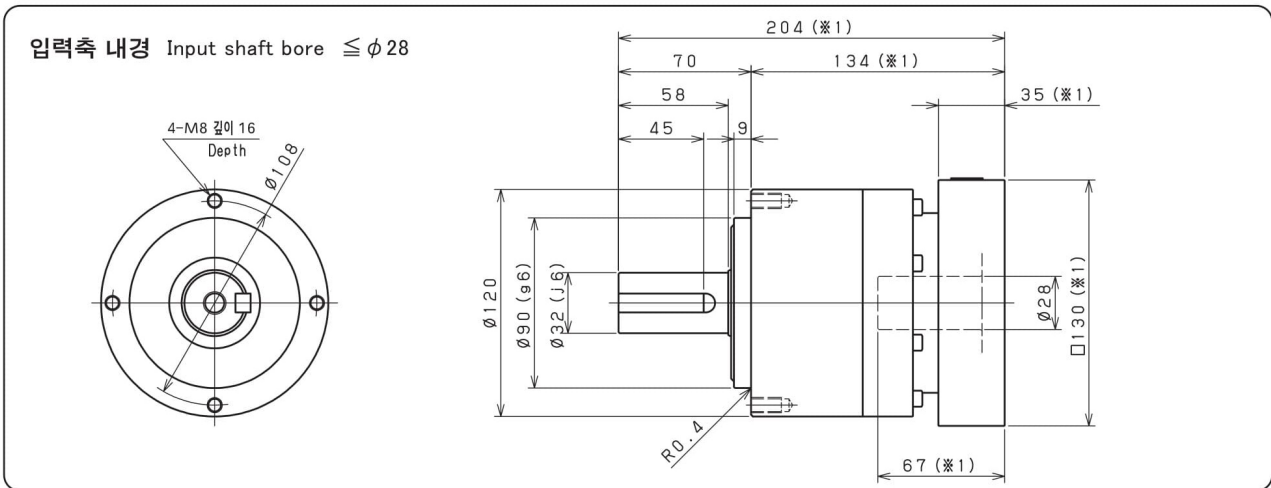
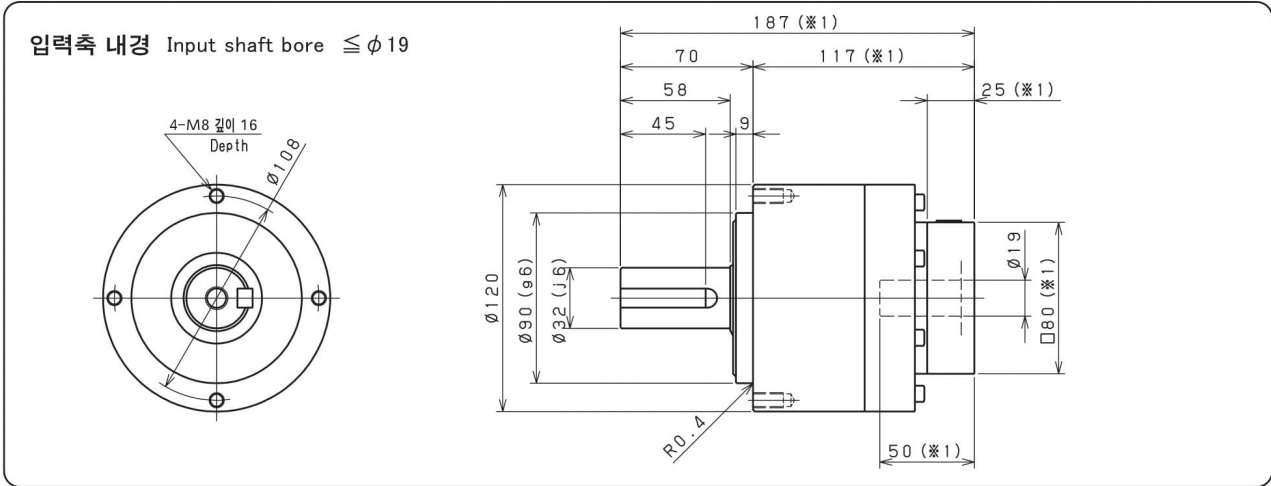
출력축 (KEY타입)
Shaft with key



출력축 (KEY없음)
Smooth shaft

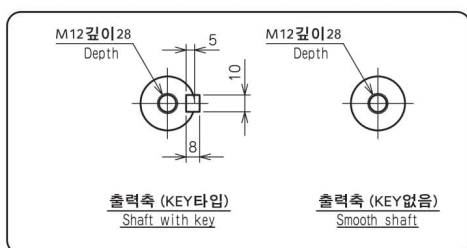
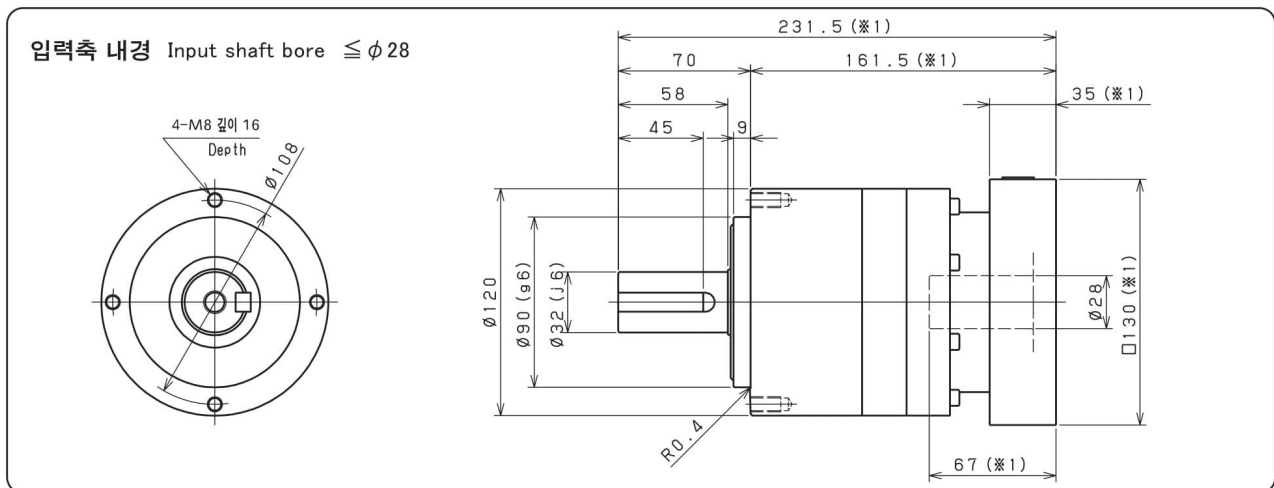
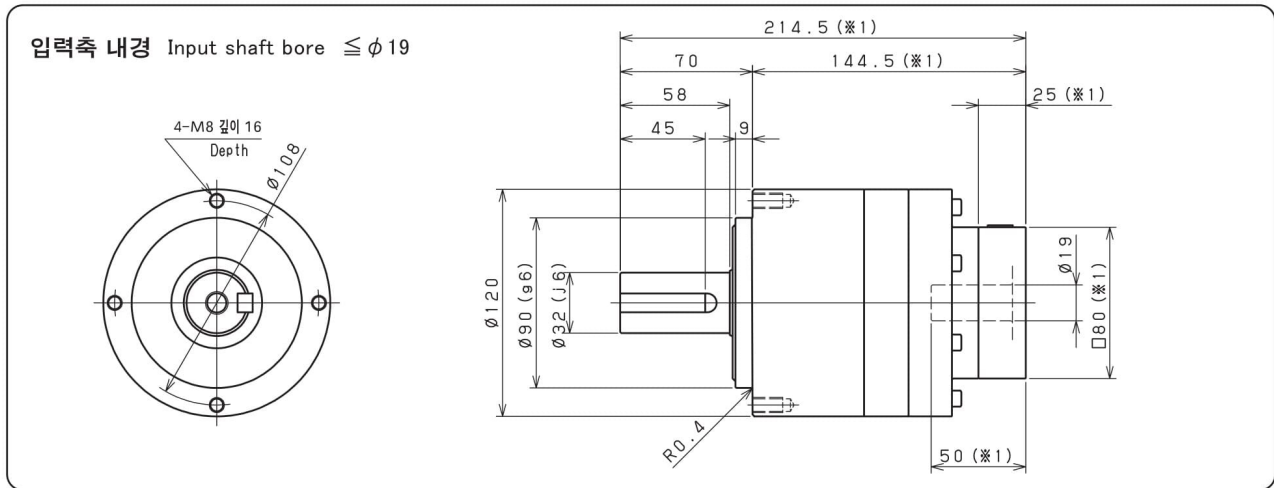
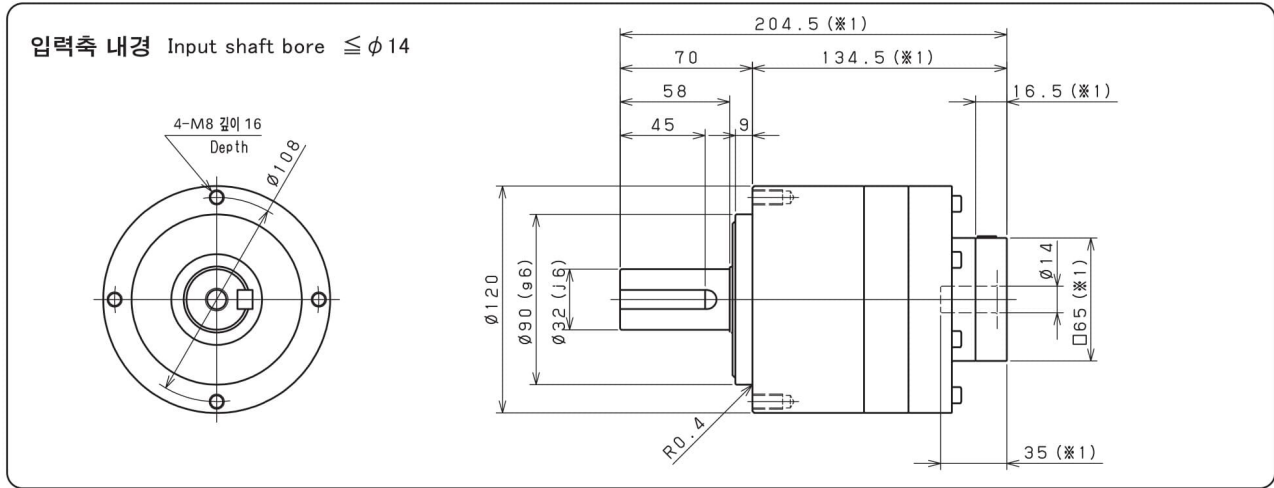
- ※1 적용 모터에 따라 길이는 변경될 수 있습니다.
- ※2 모터 축과 감속기의 입력축 내경이 다를 경우에는 부싱이 삽입됩니다.
- ※1 Length will vary depending on motor.
- ※2 Bushing will be inserted to adapt to motor shaft.

SML 120 1단 1stage



- ※1 적용 모터에 따라 길이는 변경될 수 있습니다.
- ※2 모터 축과 감속기의 입력축 내경이 다를 경우에는 부싱이 삽입됩니다.
- ※1 Length will vary depending on motor.
- ※2 Bushing will be inserted to adapt to motor shaft.

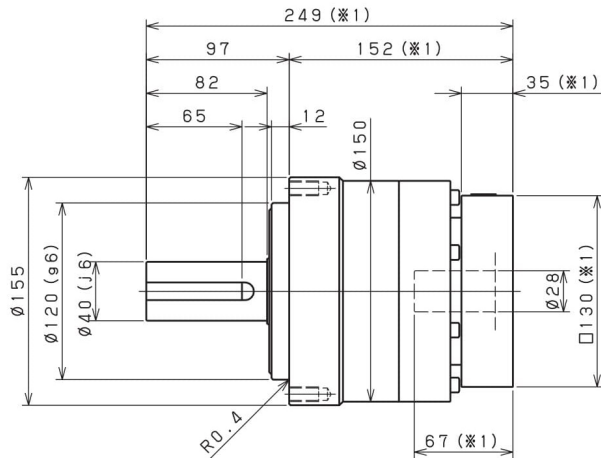
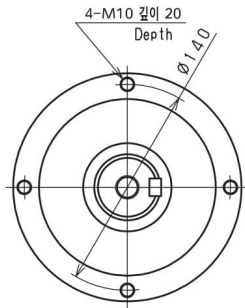
SML 120 2단 2stage



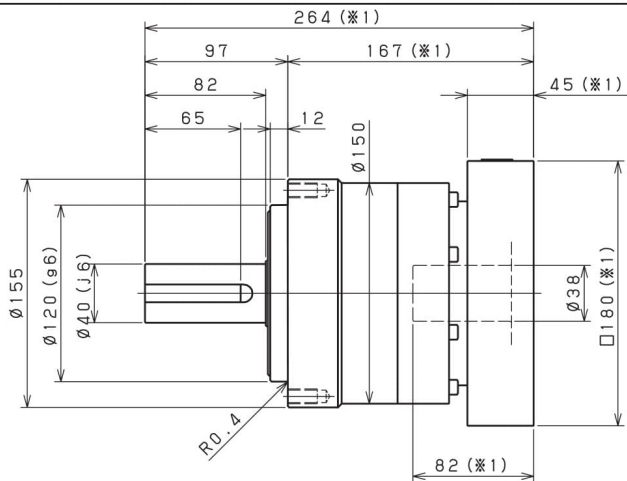
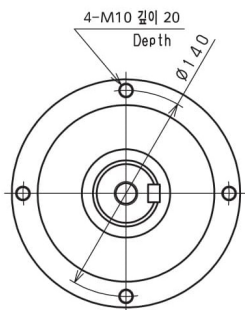
- ※ 1 적용 모터에 따라 길이는 변경될 수 있습니다.
- ※ 2 모터 축과 감속기의 입력축 내경이 다를 경우에는 부싱이 삽입됩니다.
- ※ 1 Length will vary depending on motor.
- ※ 2 Bushing will be inserted to adapt to motor shaft.

SML 155 1단 1stage

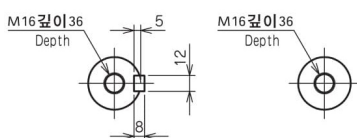
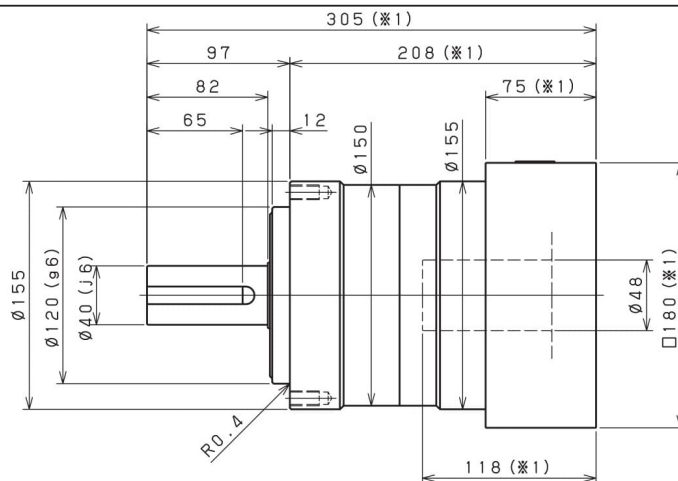
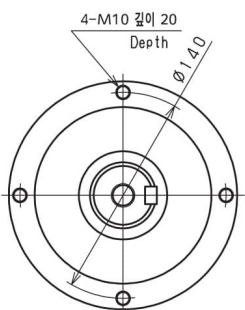
입력축 내경 Input shaft bore $\leq \phi 28$



입력축 내경 Input shaft bore $\leq \phi 38$



입력축 내경 Input shaft bore $\leq \phi 48$

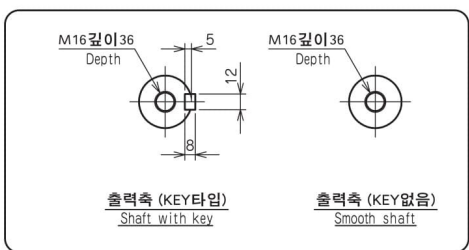
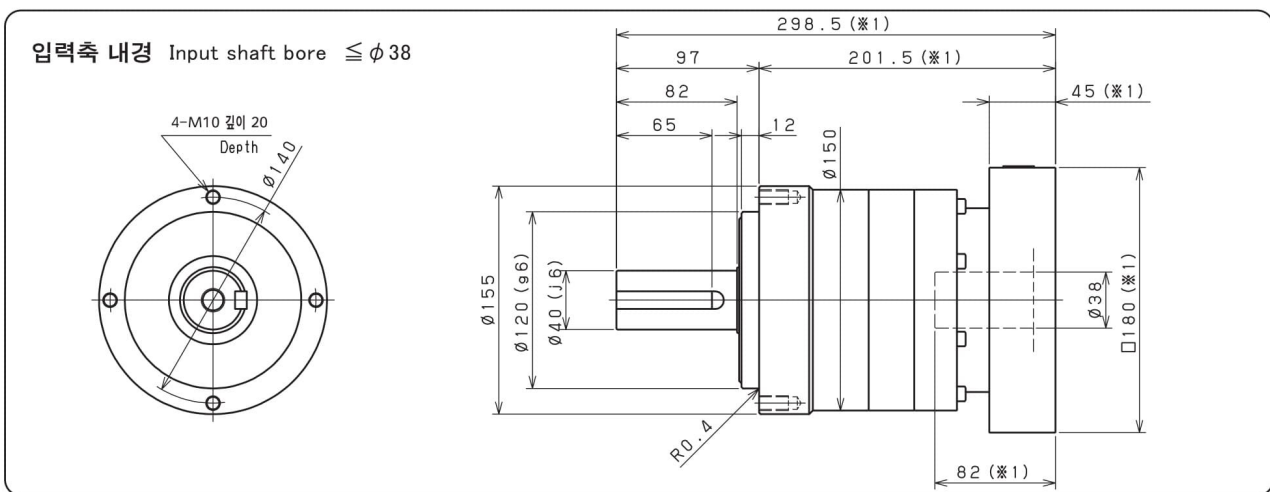
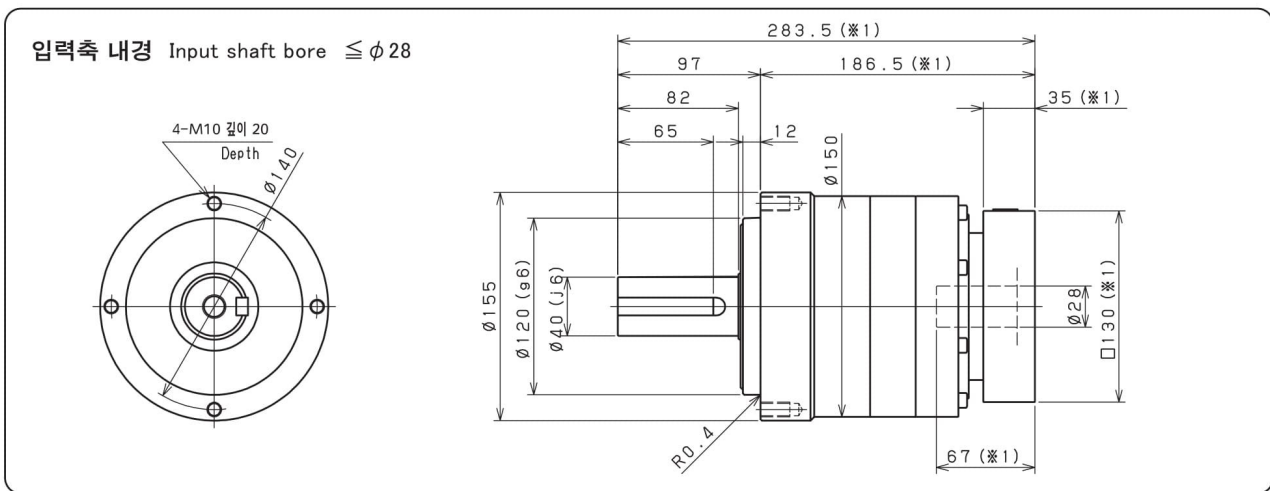
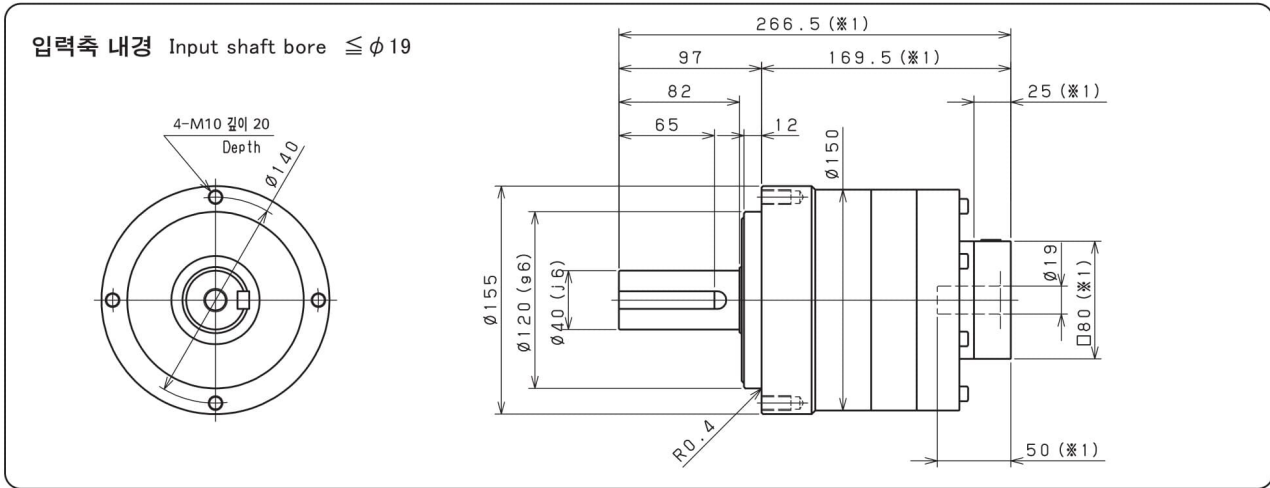


출력축 (KEY타입)
Shaft with key

출력축 (KEY없음)
Smooth shaft

- ※1 적용 모터에 따라 길이는 변경될 수 있습니다.
- ※2 모터 축과 감속기의 입력축 내경이 다를 경우에는 부싱이 삽입됩니다.
- ※1 Length will vary depending on motor.
- ※2 Bushing will be inserted to adapt to motor shaft.

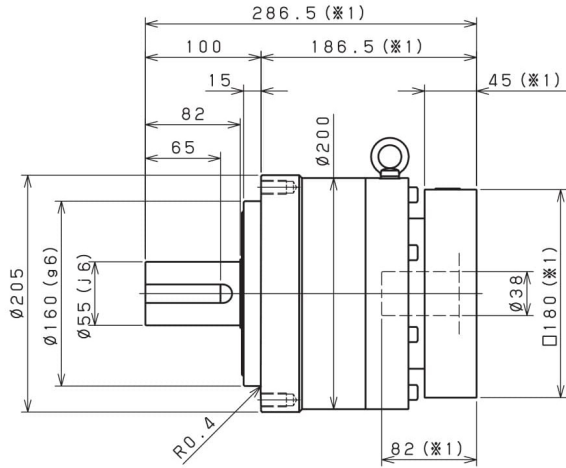
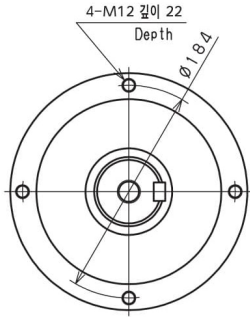
SML 155 2단 2stage



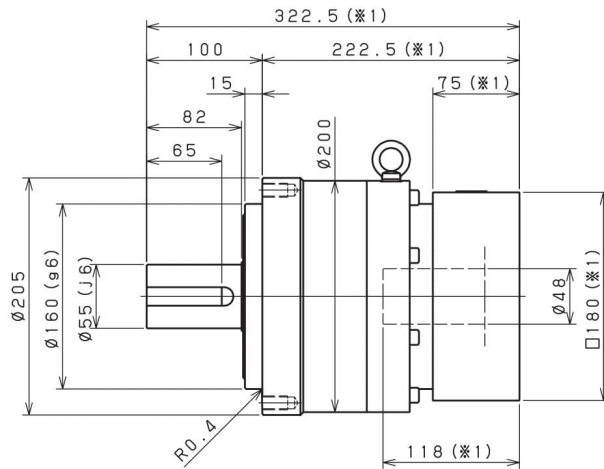
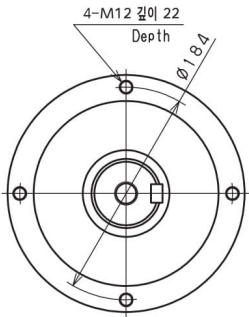
- ※ 1 적용 모터에 따라 길이는 변경될 수 있습니다.
- ※ 2 모터 축과 감속기의 입력축 내경이 다를 경우에는 부싱이 삽입됩니다.
- ※ 1 Length will vary depending on motor.
- ※ 2 Bushing will be inserted to adapt to motor shaft.

SML 205 1단 1stage

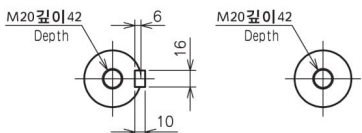
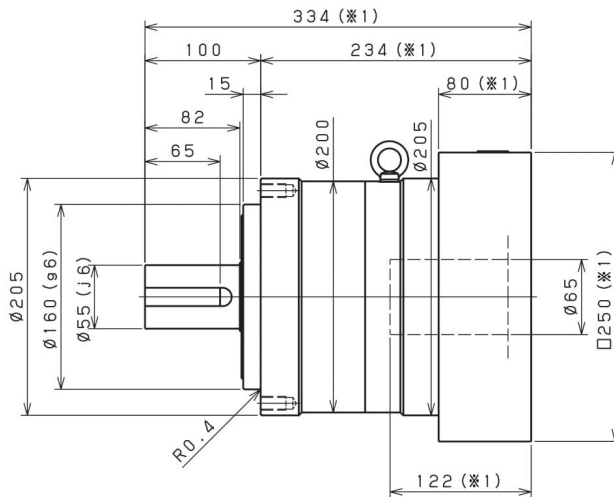
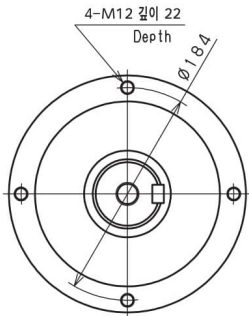
입력축 내경 Input shaft bore $\leq \phi 38$



입력축 내경 Input shaft bore $\leq \phi 48$



입력축 내경 Input shaft bore $\leq \phi 65$



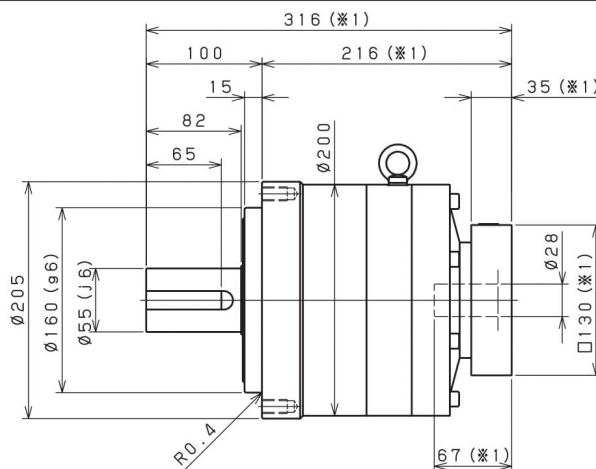
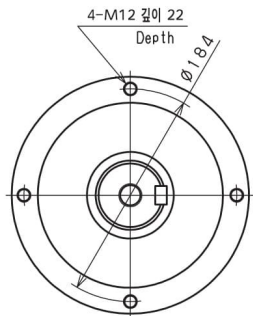
출력축 (KEY타입)
Shaft with key

출력축 (KEY없음)
Smooth shaft

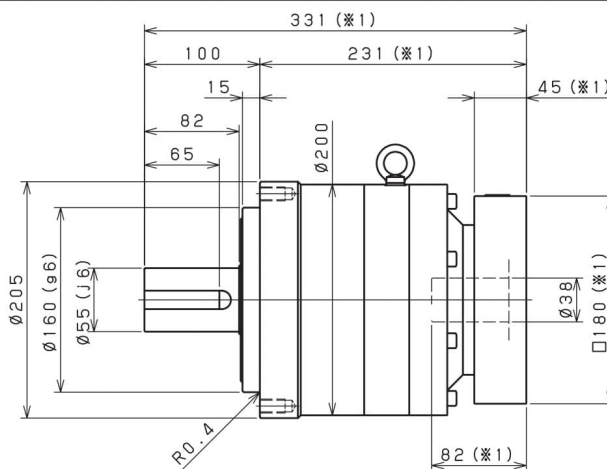
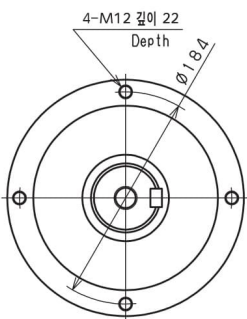
- ※1 적용 모터에 따라 길이는 변경될 수 있습니다.
- ※2 모터 축과 감속기의 입력축 내경이 다를 경우에는 부싱이 삽입됩니다.
- ※1 Length will vary depending on motor.
- ※2 Bushing will be inserted to adapt to motor shaft.

SML 205 2단 2stage

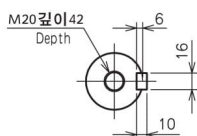
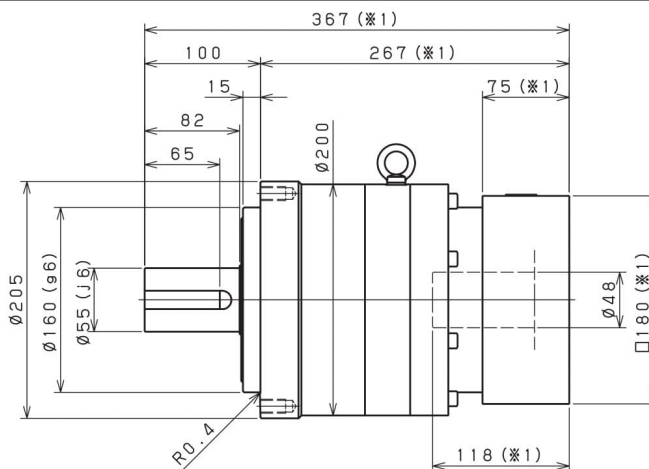
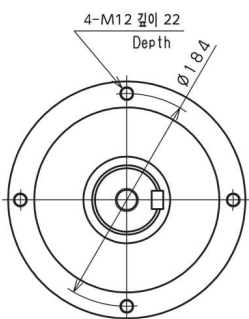
입력축 내경 Input shaft bore $\leq \phi 28$



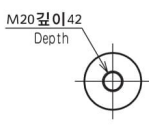
입력축 내경 Input shaft bore $\leq \phi 38$



입력축 내경 Input shaft bore $\leq \phi 48$



출력축 (KEY타입)
Shaft with key

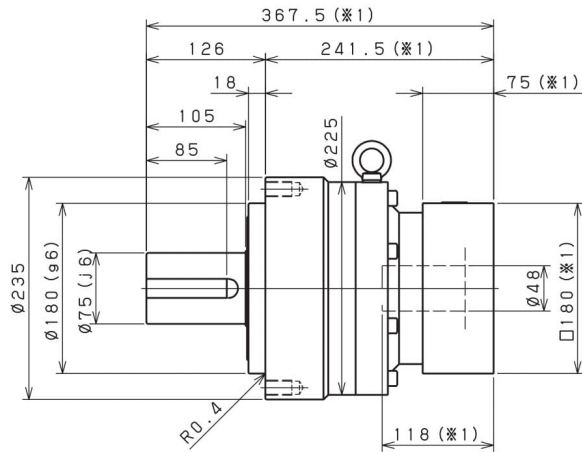
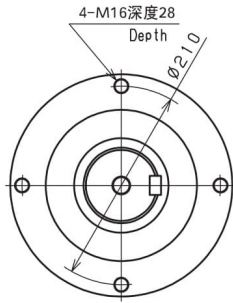


출력축 (KEY없음)
Smooth shaft

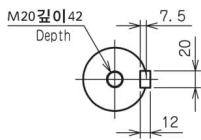
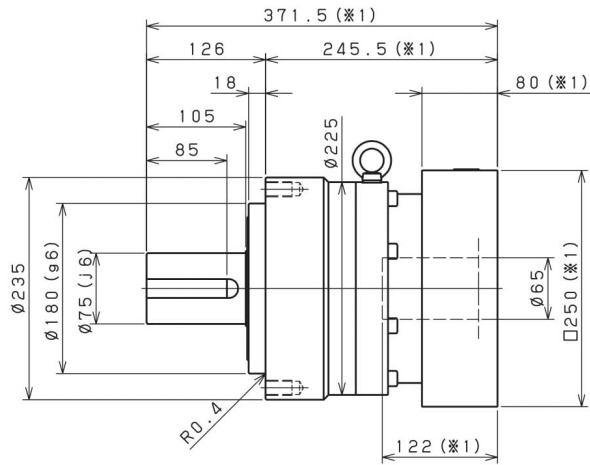
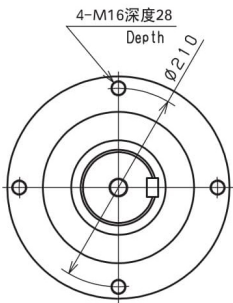
- ※1 적용 모터에 따라 길이는 변경될 수 있습니다.
- ※2 모터 축과 감속기의 입력축 내경이 다를 경우에는 부싱이 삽입됩니다.
- ※1 Length will vary depending on motor.
- ※2 Bushing will be inserted to adapt to motor shaft.

SML 235 1단 1stage

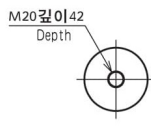
입력축 내경 Input shaft bore $\leq \phi 48$



입력축 내경 Input shaft bore $\leq \phi 65$



출력축 (KEY타입)
Shaft with key

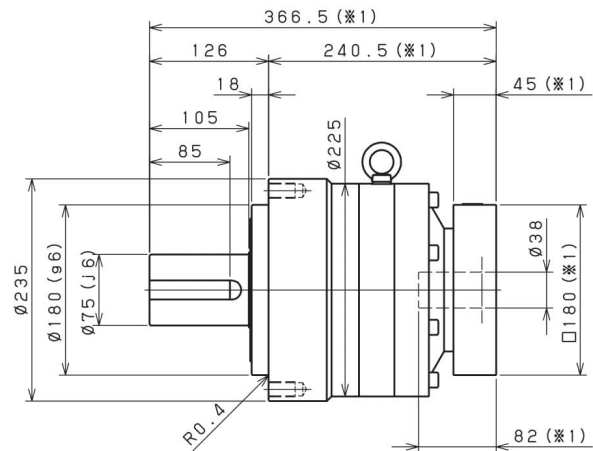
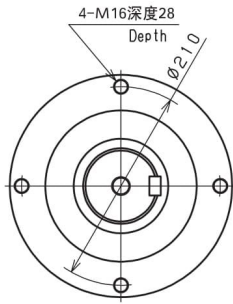


출력축 (KEY없음)
Smooth shaft

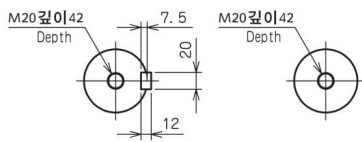
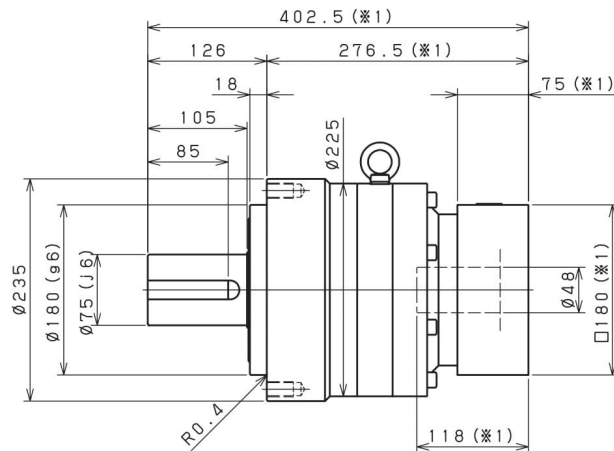
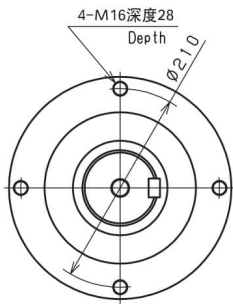
- ※1 적용 모터에 따라 길이는 변경될 수 있습니다.
- ※2 모터 축과 감속기의 입력축 내경이 다를 경우에는 부싱이 삽입됩니다.
- ※1 Length will vary depending on motor.
- ※2 Bushing will be inserted to adapt to motor shaft.

SML 235 2단 2stage

입력축 내경 Input shaft bore $\leq \phi 38$



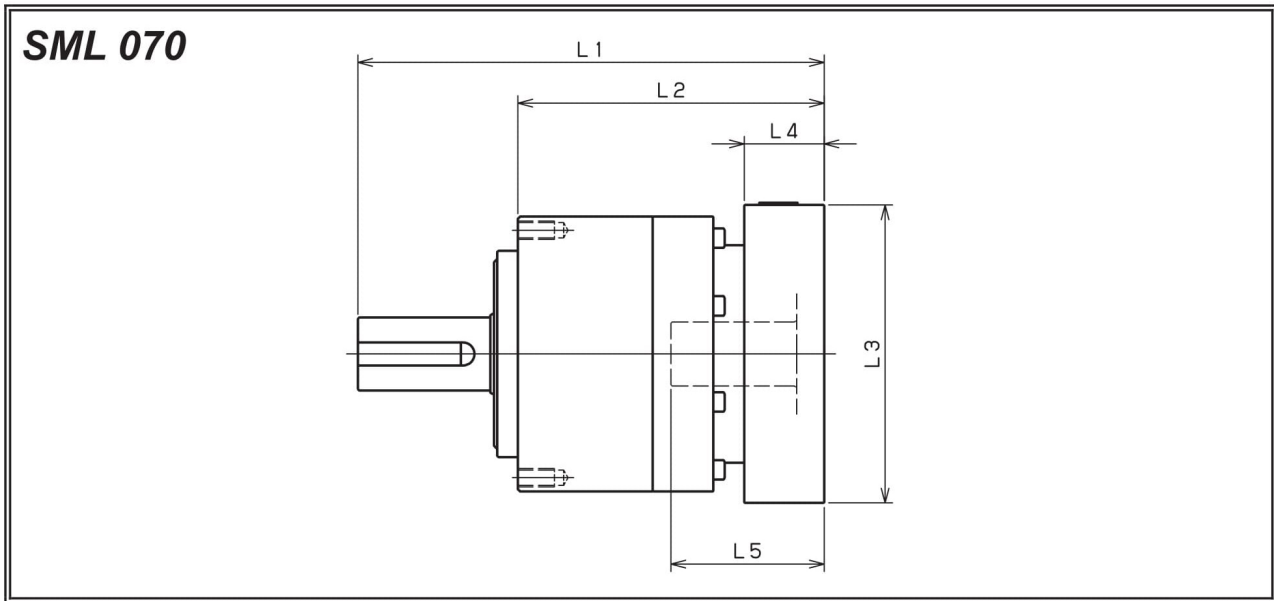
입력축 내경 Input shaft bore $\leq \phi 48$



출력축 (KEY타입)
Shaft with key

출력축 (KEY없음)
Smooth shaft

- ※1 적용 모터에 따라 길이는 변경될 수 있습니다.
- ※2 모터 축과 감속기의 입력축 내경이 다를 경우에는 부싱이 삽입됩니다.
- ※1 Length will vary depending on motor.
- ※2 Bushing will be inserted to adapt to motor shaft.



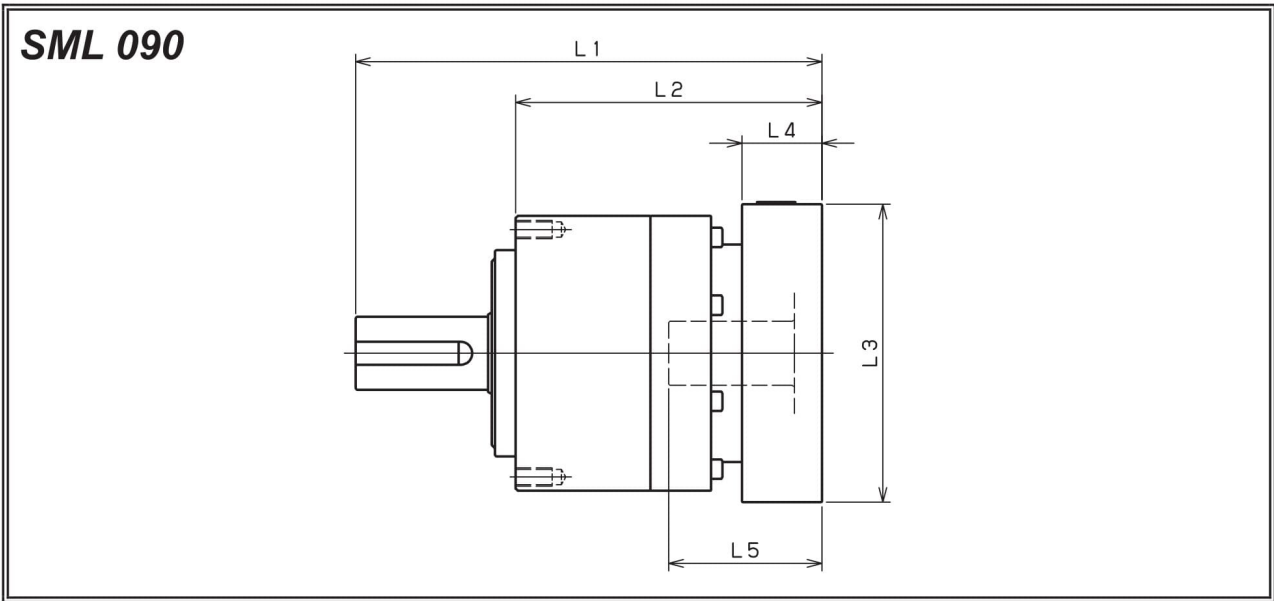
모델명 Model number	** : 어댑터 코드 ** : Adapter code (Mount code)	1단 Single					2단 Double				
		L1	L2	L3	L4	L5	L1	L2	L3	L4	L5
SML070□□□-8** (입력축 내경 ≤ φ8 Input shaft bore ≤ φ8)	AA·AC·AD·AF·AG	112	76	□52	15.5	32	131	95	□52	15.5	32
	AB·AE·AH·AJ·AK	117	81	□52	20.5	37	136	100	□52	20.5	37
	BA·BB·BD·BE	112	76	□60	15.5	32	131	95	□60	15.5	32
	BC·BF	117	81	□60	20.5	37	136	100	□60	20.5	37
	CA	117	81	□70	20.5	37	136	100	□70	20.5	37
SML070□□□-14** (입력축 내경 ≤ φ14 Input shaft bore ≤ φ14)	BA·BB·BD·BE·BF·BG·BJ·BK	115	79	□65	16.5	35	136	100	□65	16.5	35
	BC·BH·BM	120	84	□65	21.5	40	141	105	□65	21.5	40
	BL	125	89	□65	26.5	45	146	110	□65	26.5	45
	CA	115	79	□70	16.5	35	136	100	□70	16.5	35
	CB	120	84	□70	21.5	40	141	105	□70	21.5	40
	DA·DB·DC·DD·DF·DH	115	79	□80	16.5	35	136	100	□80	16.5	35
	DE	120	84	□80	21.5	40	141	105	□80	21.5	40
	DG	125	89	□80	26.5	45	146	110	□80	26.5	45
	EA·EB·EC	115	79	□90	16.5	35	136	100	□90	16.5	35
	ED	125	89	□90	26.5	45	146	110	□90	26.5	45
	FA	115	79	□100	16.5	35	136	100	□100	16.5	35
GA	115	79	□115	16.5	35	136	100	□115	16.5	35	
SML070□□□-19** (입력축 내경 ≤ φ19 Input shaft bore ≤ φ19)	DA·DB·DC	130	94	□80	25	50					
	DD	140	104	□80	35	60					
	DE	135	99	□80	30	55					
	EA	135	99	□90	30	55					
	EB	130	94	□90	25	50					
	EC	140	104	□90	35	60					
	FA	130	94	□100	25	50					
	FB	140	104	□100	35	60					
	GA·GC	135	99	□115	30	55					
	GB·GD	130	94	□115	25	50					
	HA	130	94	□130	25	50					
	HB	145	109	□130	40	65					
	HC·HD·HE	135	99	□130	30	55					

※ 1 1단 감속비: 1/3~1/10 ; 2단 감속비: 1/15~1/100

※ 1 Single reduction : 1/3 ~ 1/10, Double reduction : 1/15 ~ 1/100

※ 2 모터 축과 감속기의 입력축 내경이 다를 경우에는 부싱이 삽입됩니다.

※ 2 Bushing will be inserted to adapt to motor shaft.



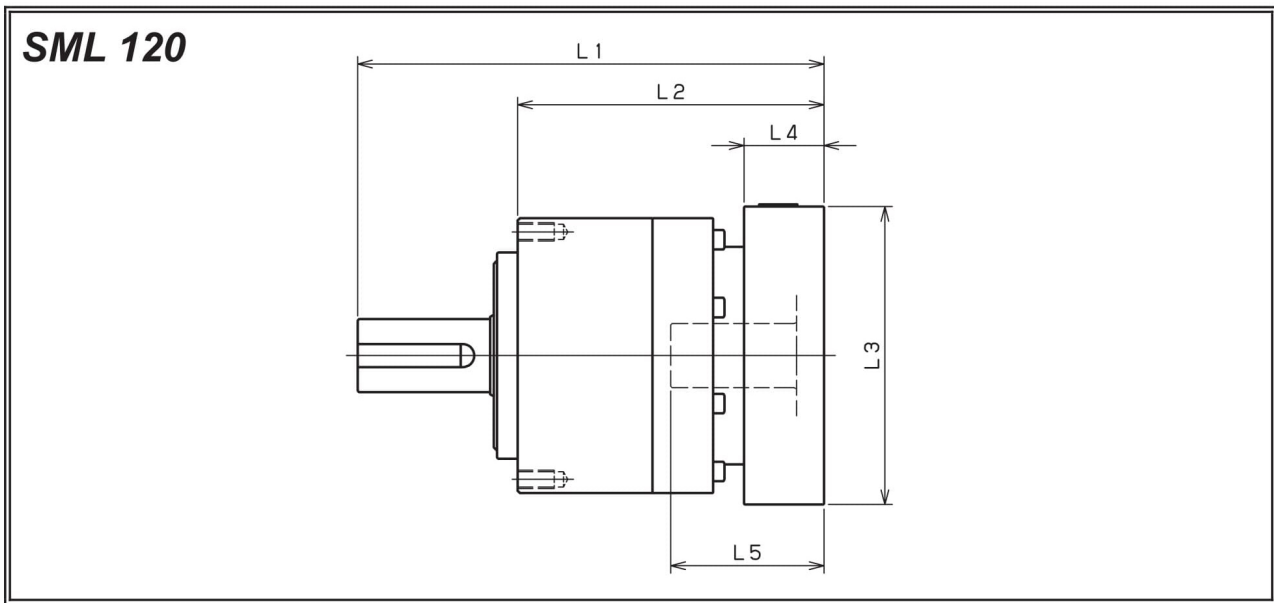
모델명 Model number	** : 어댑터 코드 ** : Adapter code (Mount code)	1단 Single					2단 Double				
		L1	L2	L3	L4	L5	L1	L2	L3	L4	L5
SML090□□□-8** (입력축 내경 ≤ φ8 Input shaft bore ≤ φ8)	AA·AC·AD·AF·AG	/	/	/	/	/	160	114	□52	15.5	32
	AB·AE·AH·AJ·AK	/	/	/	/	/	165	119	□52	20.5	37
	BA·BB·BD·BE	/	/	/	/	/	160	114	□60	15.5	32
	BC·BF	/	/	/	/	/	165	119	□60	20.5	37
	CA	/	/	/	/	/	165	119	□70	20.5	37
SML090□□□-14** (입력축 내경 ≤ φ14 Input shaft bore ≤ φ14)	BA·BB·BD·BE·BF·BG·BJ·BK	143	97	□65	16.5	35	165	119	□65	16.5	35
	BC·BH·BM	148	102	□65	21.5	40	170	124	□65	21.5	40
	BL	153	107	□65	26.5	45	175	129	□65	26.5	45
	CA	143	97	□70	16.5	35	165	119	□70	16.5	35
	CB	148	102	□70	21.5	40	170	124	□70	21.5	40
	DA·DB·DC·DD·DF·DH	143	97	□80	16.5	35	165	119	□80	16.5	35
	DE	148	102	□80	21.5	40	170	124	□80	21.5	40
	DG	153	107	□80	26.5	45	175	129	□80	26.5	45
	EA·EB·EC	143	97	□90	16.5	35	165	119	□90	16.5	35
	ED	153	107	□90	26.5	45	175	129	□90	26.5	45
	FA	143	97	□100	16.5	35	165	119	□100	16.5	35
GA	143	97	□115	16.5	35	165	119	□115	16.5	35	
SML090□□□-19** (입력축 내경 ≤ φ19 Input shaft bore ≤ φ19)	DA·DB·DC	153	107	□80	25	50	175	129	□80	25	50
	DD	163	117	□80	35	60	185	139	□80	35	60
	DE	158	112	□80	30	55	180	134	□80	30	55
	EA	158	112	□90	30	55	180	134	□90	30	55
	EB	153	107	□90	25	50	175	129	□90	25	50
	EC	163	117	□90	35	60	185	139	□90	35	60
	FA	153	107	□100	25	50	175	129	□100	25	50
	FB	163	117	□100	35	60	185	139	□100	35	60
	GA·GC	158	112	□115	30	55	180	134	□115	30	55
	GB·GD	153	107	□115	25	50	175	129	□115	25	50
	HA	153	107	□130	25	50	175	129	□130	25	50
HB	168	122	□130	40	65	190	144	□130	40	65	
HC·HD·HE	158	112	□130	30	55	180	134	□130	30	55	
SML090□□□-28** (입력축 내경 ≤ φ28 Input shaft bore ≤ φ28)	FA·FB·FC	170	124	□100	35	67	/	/	/	/	/
	GA·GB·GC·GD·GE·GF·GG	170	124	□115	35	67	/	/	/	/	/
	HA·HC·HD	170	124	□130	35	67	/	/	/	/	/
	HB	180	134	□130	45	77	/	/	/	/	/
	JA·JB·JC	170	124	□150	35	67	/	/	/	/	/
	KA·KB	170	124	□180	35	67	/	/	/	/	/
	KD	180	134	□180	45	77	/	/	/	/	/
	LA	170	124	□200	35	67	/	/	/	/	/
MA	170	124	□220	35	67	/	/	/	/	/	

※ 1 단 감속비: 1/3~1/10 ; 2단 감속비: 1/15~1/100

※ 2 모터 축과 감속기의 입력축 내경이 다를 경우에는 부싱이 삽입됩니다.

※ 1 Single reduction : 1/3 ~ 1/10, Double reduction : 1/15 ~ 1/100

※ 2 Bushing will be inserted to adapt to motor shaft.



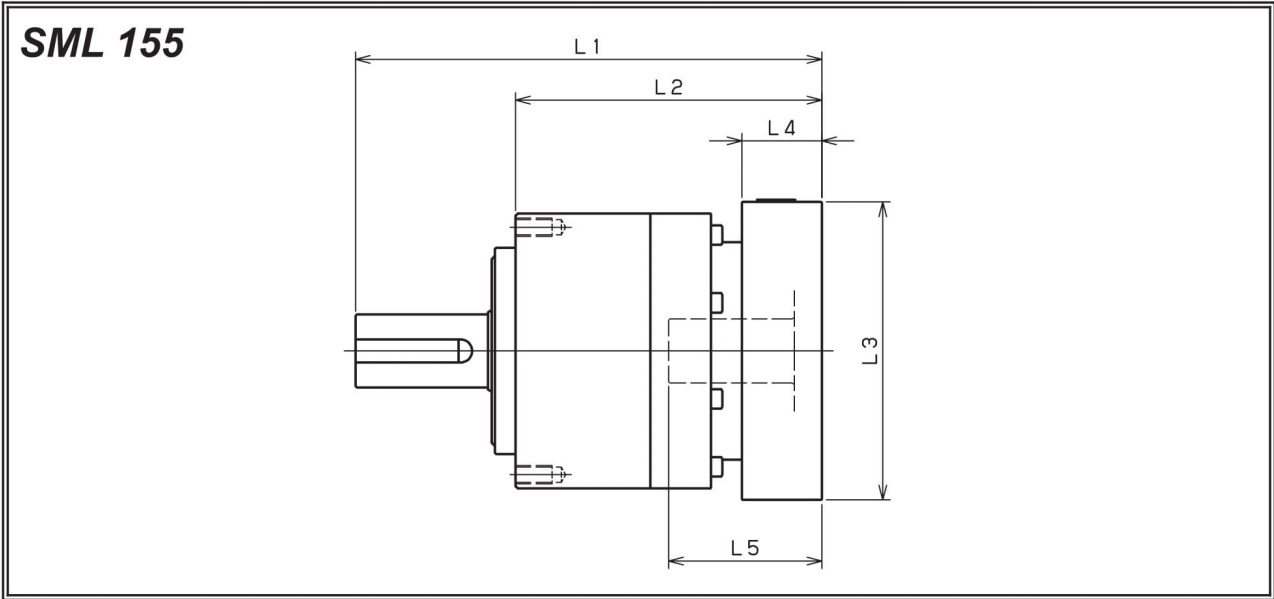
모델명 Model number	** : 어댑터 코드 ** : Adapter code (Mount code)	1단 Single					2단 Double				
		L1	L2	L3	L4	L5	L1	L2	L3	L4	L5
SML120□□□-14** (입력축 내경 ≤ φ14) Input shaft bore ≤ φ14	BA·BB·BD·BE·BF·BG·BJ·BK						204.5	134.5	□65	16.5	35
	BC·BH·BM						209.5	139.5	□65	21.5	40
	BL						214.5	144.5	□65	26.5	45
	CA						204.5	134.5	□70	16.5	35
	CB						209.5	139.5	□70	21.5	40
	DA·DB·DC·DD·DF·DH						204.5	134.5	□80	16.5	35
	DE						209.5	139.5	□80	21.5	40
	DG						214.5	144.5	□80	26.5	45
	EA·EB·EC						204.5	134.5	□90	16.5	35
	ED						214.5	144.5	□90	26.5	45
	FA						204.5	134.5	□100	16.5	35
GA						204.5	134.5	□115	16.5	35	
SML120□□□-19** (입력축 내경 ≤ φ19) Input shaft bore ≤ φ19	DA·DB·DC	187	117	□80	25	50	214.5	144.5	□80	25	50
	DD	197	127	□80	35	60	224.5	154.5	□80	35	60
	DE	192	122	□80	30	55	219.5	149.5	□80	30	55
	EA	192	122	□90	30	55	219.5	149.5	□90	30	55
	EB	187	117	□90	25	50	214.5	144.5	□90	25	50
	EC	197	127	□90	35	60	224.5	154.5	□90	35	60
	FA	187	117	□100	25	50	214.5	144.5	□100	25	50
	FB	197	127	□100	35	60	224.5	154.5	□100	35	60
	GA·GC	192	122	□115	30	55	219.5	149.5	□115	30	55
	GB·GD	187	117	□115	25	50	214.5	144.5	□115	25	50
	HA	187	117	□130	25	50	214.5	144.5	□130	25	50
HB	202	132	□130	40	65	229.5	159.5	□130	40	65	
HC·HD·HE	192	122	□130	30	55	219.5	149.5	□130	30	55	
SML120□□□-28** (입력축 내경 ≤ φ28) Input shaft bore ≤ φ28	FA·FB·FC	204	134	□100	35	67	231.5	161.5	□100	35	67
	GA·GB·GC·GD·GE·GF·GG	204	134	□115	35	67	231.5	161.5	□115	35	67
	HA·HC·HD	204	134	□130	35	67	231.5	161.5	□130	35	67
	HB	214	144	□130	45	77	241.5	171.5	□130	45	77
	JA·JB·JC	204	134	□150	35	67	231.5	161.5	□150	35	67
	KA·KB	204	134	□180	35	67	231.5	161.5	□180	35	67
	KD	214	144	□180	45	77	241.5	171.5	□180	45	77
	LA	204	134	□200	35	67	231.5	161.5	□200	35	67
SML120□□□-38** (입력축 내경 ≤ φ38) Input shaft bore ≤ φ38	MA	204	134	□220	35	67	231.5	161.5	□220	35	67
	HA	225	155	□130	45	82					
	HB	220	150	□130	40	77					
	JA	225	155	□150	45	82					
	KA·KB·KC	225	155	□180	45	82					
	LA	225	155	□200	45	82					
	LB	235	165	□200	55	92					
	MA·MB	225	155	□220	45	82					
NA	225	155	□250	45	82						

※1 1단 감속비: 1/3~1/10 ; 2단 감속비: 1/15~1/100

※2 모터 축과 감속기의 입력축 내경이 다를 경우에는 부싱이 삽입됩니다.

※1 Single reduction : 1/3 ~ 1/10, Double reduction : 1/15 ~ 1/100

※2 Bushing will be inserted to adapt to motor shaft.



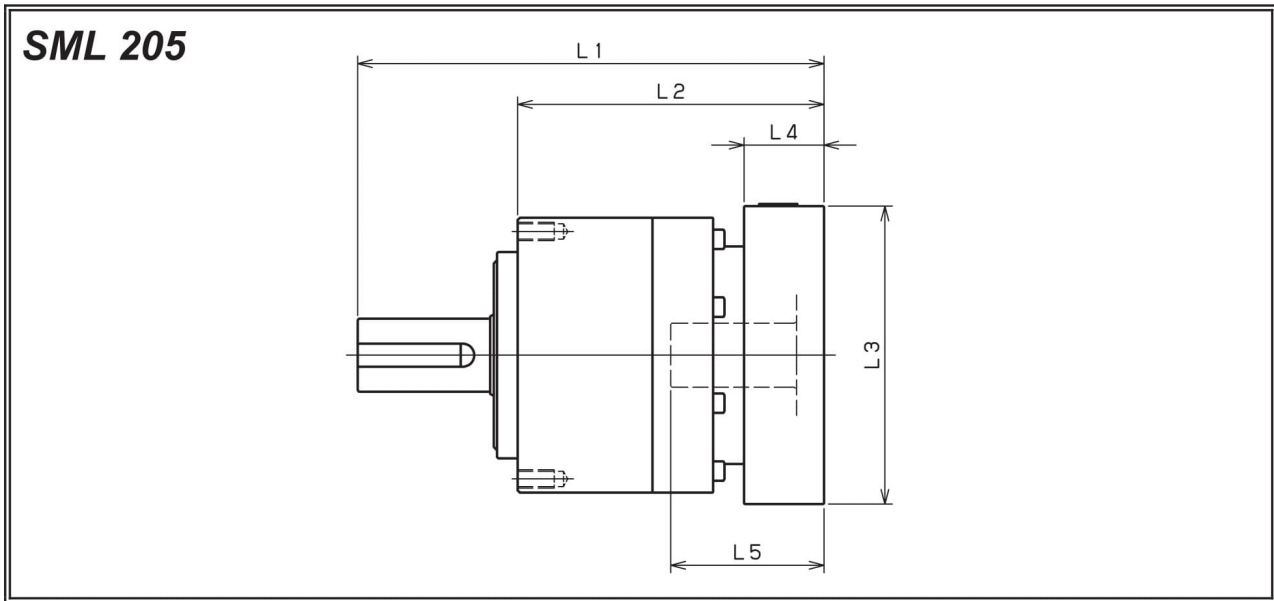
모델명 Model number	** : 어댑터 코드 ** : Adapter code (Mount code)	1단 Single					2단 Double				
		L1	L2	L3	L4	L5	L1	L2	L3	L4	L5
SML155□□□-19** (입력축 내경 ≤ φ19) Input shaft bore ≤ φ19	DA·DB·DC						266.5	169.5	□80	25	50
	DD						276.5	179.5	□80	35	60
	DE						271.5	174.5	□80	30	55
	EA						271.5	174.5	□90	30	55
	EB						266.5	169.5	□90	25	50
	EC						276.5	179.5	□90	35	60
	FA						266.5	169.5	□100	25	50
	FB						276.5	179.5	□100	35	60
	GA·GC						271.5	174.5	□115	30	55
	GB·GD						266.5	169.5	□115	25	50
	HA						266.5	169.5	□130	25	50
	HB						281.5	184.5	□130	40	65
	HC·HD·HE						271.5	174.5	□130	30	55
	SML155□□□-28** (입력축 내경 ≤ φ28) Input shaft bore ≤ φ28	FA·FB·FC	249	152	□100	35	67	283.5	186.5	□100	35
GA·GB·GC·GD·GE·GF·GG		249	152	□115	35	67	283.5	186.5	□115	35	67
HA·HC·HD		249	152	□130	35	67	283.5	186.5	□130	35	67
HB		259	162	□130	45	77	293.5	196.5	□130	45	77
JA·JB·JC		249	152	□150	35	67	283.5	186.5	□150	35	67
KA·KB		249	152	□180	35	67	283.5	186.5	□180	35	67
KD		259	162	□180	45	77	293.5	196.5	□180	45	77
LA		249	152	□200	35	67	283.5	186.5	□200	35	67
SML155□□□-38** (입력축 내경 ≤ φ38) Input shaft bore ≤ φ38	MA	249	152	□220	35	67	283.5	186.5	□220	35	67
	HA	264	167	□130	45	82	298.5	201.5	□130	45	82
	HB	259	162	□130	40	77	293.5	196.5	□130	40	77
	JA	264	167	□150	45	82	298.5	201.5	□150	45	82
	KA·KB·KC	264	167	□180	45	82	298.5	201.5	□180	45	82
	LA	264	167	□200	45	82	298.5	201.5	□200	45	82
	LB	274	177	□200	55	92	308.5	211.5	□200	55	92
	MA·MB	264	167	□220	45	82	298.5	201.5	□220	45	82
SML155□□□-48** (입력축 내경 ≤ φ48) Input shaft bore ≤ φ48	NA	264	167	□250	45	82	298.5	201.5	□250	45	82
	KB·KC	285	188	□180	55	98					
	KA	305	208	□180	75	118					
	LA	285	188	□200	55	98					
	MA	285	188	□220	55	98					
	MB	305	208	□220	75	118					
NA	305	208	□250	75	118						
PA	305	208	□280	75	118						

※1 1단 감속비: 1/3~1/10 ; 2단 감속비: 1/15~1/100

※2 모터 축과 감속기의 입력축 내경이 다를 경우에는 부싱이 삽입됩니다.

※1 Single reduction : 1/3 ~ 1/10, Double reduction : 1/15 ~ 1/100

※2 Bushing will be inserted to adapt to motor shaft.



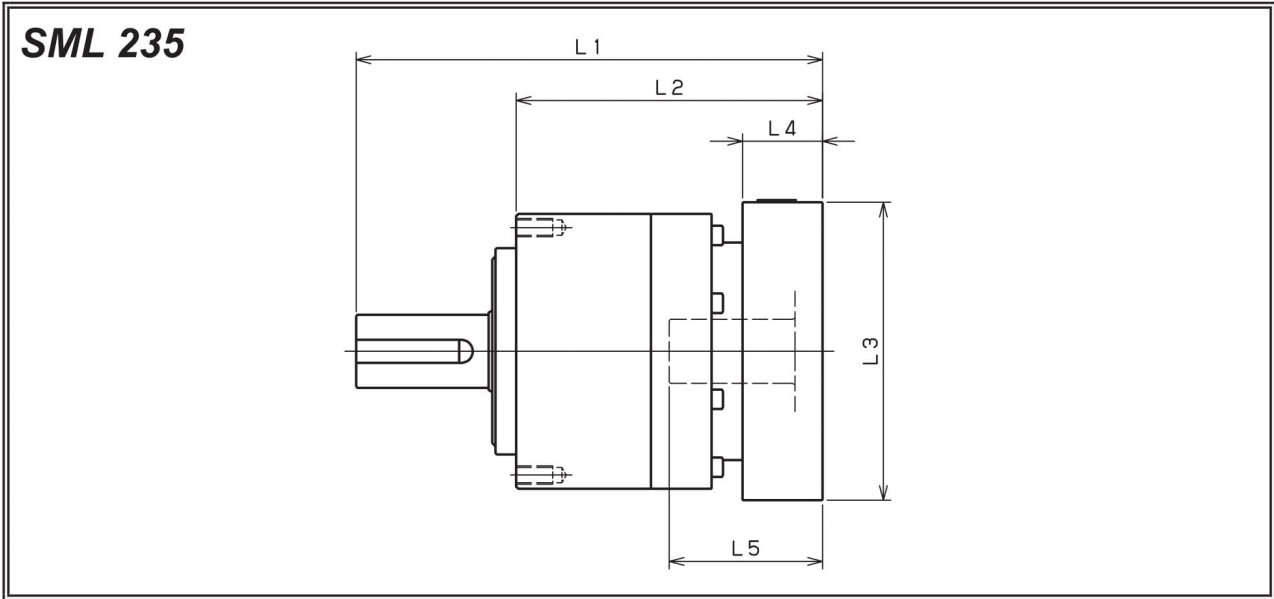
모델명 Model number	** : 어댑터 코드 ** : Adapter code (Mount code)	1단 Single					2단 Double				
		L1	L2	L3	L4	L5	L1	L2	L3	L4	L5
SML205□□□-28** (입력축 내경 ≤ φ28 Input shaft bore ≤ φ28)	FA·FB·FC	/	/	/	/	/	316	216	□100	35	67
	GA·GB·GC·GD·GE·GF·GG	/	/	/	/	/	316	216	□115	35	67
	HA·HC·HD	/	/	/	/	/	316	216	□130	35	67
	HB	/	/	/	/	/	326	226	□130	45	77
	JA·JB·JC	/	/	/	/	/	316	216	□150	35	67
	KA·KB	/	/	/	/	/	316	216	□180	35	67
	KD	/	/	/	/	/	326	226	□180	45	77
	LA	/	/	/	/	/	316	216	□200	35	67
MA	/	/	/	/	/	316	216	□220	35	67	
SML205□□□-38** (입력축 내경 ≤ φ38 Input shaft bore ≤ φ38)	HA	286.5	186.5	□130	45	82	331	231	□130	45	82
	HB	281.5	181.5	□130	40	77	326	226	□130	40	77
	JA	286.5	186.5	□150	45	82	331	231	□150	45	82
	KA·KB·KC	286.5	186.5	□180	45	82	331	231	□180	45	82
	LA	286.5	186.5	□200	45	82	331	231	□200	45	82
	LB	296.5	196.5	□200	55	92	341	241	□200	55	92
	MA·MB	286.5	186.5	□220	45	82	331	231	□220	45	82
NA	286.5	186.5	□250	45	82	331	231	□250	45	82	
SML205□□□-48** (입력축 내경 ≤ φ48 Input shaft bore ≤ φ48)	KB·KC	302.5	202.5	□180	55	98	347	247	□180	55	98
	KA	322.5	222.5	□180	75	118	367	267	□180	75	118
	LA	302.5	202.5	□200	55	98	347	247	□200	55	98
	MA	302.5	202.5	□220	55	98	347	247	□220	55	98
	MB	322.5	222.5	□220	75	118	367	267	□220	75	118
	NA	322.5	222.5	□250	75	118	367	267	□250	75	118
PA	322.5	222.5	□280	75	118	367	267	□280	75	118	
SML205□□□-65** (입력축 내경 ≤ φ65 Input shaft bore ≤ φ65)	MA·MB·MC·MD	334	234	□220	80	122	/	/	/	/	/
	NA	334	234	□250	80	122	/	/	/	/	/
	PA	354	254	□280	100	142	/	/	/	/	/
	PB	364	264	□280	110	152	/	/	/	/	/
	QA	354	254	□320	100	142	/	/	/	/	/

※1 1단 감속비: 1/3~1/10 ; 2단 감속비: 1/15~1/100

※1 Single reduction : 1/3 ~ 1/10, Double reduction : 1/15 ~ 1/100

※2 모터 축과 감속기의 입력축 내경이 다를 경우에는 부싱이 삽입됩니다.

※2 Bushing will be inserted to adapt to motor shaft.



모델명 Model number	** : 어댑터 코드 ** : Adapter code (Mount code)	1단 Single					2단 Double				
		L1	L2	L3	L4	L5	L1	L2	L3	L4	L5
SML235□□□-38** (입력축 내경 ≤ φ38 Input shaft bore)	HA	/	/	/	/	/	366.5	240.5	□130	45	82
	HB	/	/	/	/	/	361.5	235.5	□130	40	77
	JA	/	/	/	/	/	366.5	240.5	□150	45	82
	KA·KB·KC	/	/	/	/	/	366.5	240.5	□180	45	82
	LA	/	/	/	/	/	366.5	240.5	□200	45	82
	LB	/	/	/	/	/	376.5	250.5	□200	55	92
	MA·MB	/	/	/	/	/	366.5	240.5	□220	45	82
SML235□□□-48** (입력축 내경 ≤ φ48 Input shaft bore)	NA	/	/	/	/	/	366.5	240.5	□250	45	82
	KB·KC	347.5	221.5	□180	55	98	382.5	256.5	□180	55	98
	KA	367.5	241.5	□180	75	118	402.5	276.5	□180	75	118
	LA	347.5	221.5	□200	55	98	382.5	256.5	□200	55	98
	MA	347.5	221.5	□220	55	98	382.5	256.5	□220	55	98
	MB	367.5	241.5	□220	75	118	402.5	276.5	□220	75	118
	NA	367.5	241.5	□250	75	118	402.5	276.5	□250	75	118
SML235□□□-65** (입력축 내경 ≤ φ65 Input shaft bore)	PA	367.5	241.5	□280	75	118	402.5	276.5	□280	75	118
	MA·MB·MC·MD	371.5	245.5	□220	80	122	/	/	/	/	/
	NA	371.5	245.5	□250	80	122	/	/	/	/	/
	PA	391.5	265.5	□280	100	142	/	/	/	/	/
	PB	401.5	275.5	□280	110	152	/	/	/	/	/
QA	391.5	265.5	□320	100	142	/	/	/	/	/	

※1 1단 감속비: 1/3~1/10 ; 2단 감속비: 1/15~1/100

※1 Single reduction : 1/3 ~ 1/10, Double reduction : 1/15 ~ 1/100

※2 모터 축과 감속기의 입력축 내경이 다를 경우에는 부싱이 삽입됩니다.

※2 Bushing will be inserted to adapt to motor shaft.