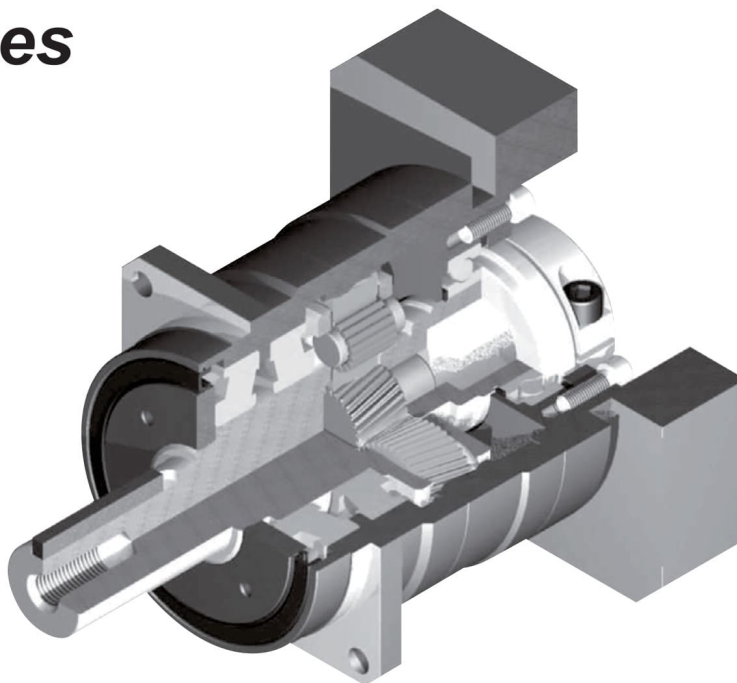


# SMS series



## 고정밀

표준 백래시 ≤ 3 arc-min.

## High precision

Standard backlash is 3 arc-min, ideal for precision control.

## 고강성 & 고토크

Uncaged 니들롤러베어링을 사용하여 강성과 토크 향상.

## High rigidity & torque

High rigidity & high torque were achieved by uncaged needle roller bearings.

## 고하중

출력단에 테이퍼롤러 베어링을 사용하여 반경방향 및 축방향 하중을 증가.

## High load capacity

Adopting taper roller bearing for the main output shaft to increase radial and axial load.

## 어댑터-부싱 연결방식

다양한 모터에 취부 가능.

## Adapter-bushing connection

Can be attached to any motor all over the world.

## 그리스 누유현상 없음

고점도 분리방지 그리스를 사용.

## No grease leakage

Perfect solution using high viscosity anti-separation grease.

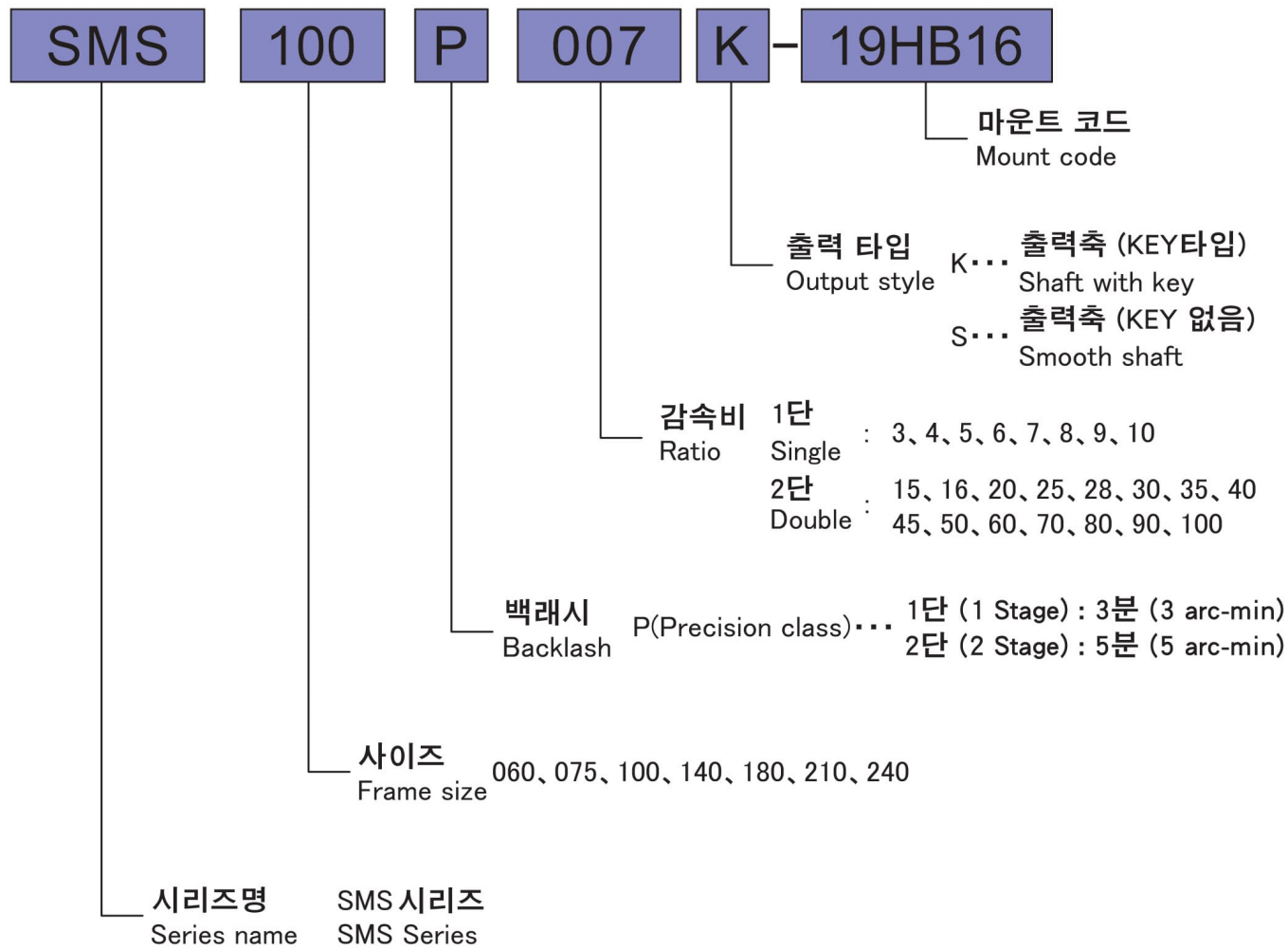
## 유지 보수 불필요

제품 수명 동안 그리스 교체 불필요 자유로운 설치 가능.

## Maintenance-free

No need to replace the grease for the life of the unit. Can be attached in any position.

# SMS series



Model No.		Unit	Stage	Ratio <sup>1</sup>	SMS060	SMS075	SMS100	SMS140	SMS180	SMS210	SMS240
Rated Output Torque (Nominal Output torque)	$T_{2N}$	Nm	1	3	39	106	195	440	750	1,500	1,700
				4	39	110	210	460	950	1,600	2,400
				5	43	110	210	580	1,200	2,000	2,600
				6	43	108	160	530	1,100	1,600	2,500
				7	43	108	200	490	1,000	1,500	2,300
				8	43	79	190	420	900	1,200	1,900
				9	35	90	170	390	800	1,100	1,700
				10	30	88	170	370	800	1,100	1,600
				15	35	84	195	440	750	1,450	2,400
				16	39	100	210	460	950	1,800	2,800
			20	39	100	210	460	950	1,900	3,200	
			25	43	110	210	580	1,200	2,000	3,100	
			28	43	108	200	580	1,200	1,500	2,300	
			30	39	90	195	440	900	1,500	3,200	
			35	43	108	200	580	1,200	1,500	2,300	
			40	43	110	210	460	1,200	2,000	3,200	
			45	39	90	170	580	1,200	1,100	1,700	
			50	43	110	210	580	1,200	2,000	3,000	
			60	43	108	160	580	1,200	1,600	2,500	
			70	43	108	200	490	1,100	1,500	2,300	
80	43	79	190	420	900	1,200	1,900				
90	39	90	170	390	800	1,100	1,700				
100	39	88	170	370	800	1,100	1,600				
Max. Acceleration Torque	$T_{2B}$	Nm	1,2	3~100	1.8 Times of Rated Output Torque						
Max. Output Torque Emergency Stop Torque	$T_{2NOT}$	Nm	1,2	3~100	3 Times of Rated Output Torque						
Nominal Input speed	$n_{1n}$	rpm	1,2	3~100	3,000	3,000	3,000	2,000	1,500	1,000	1,000
Max. Input speed	$n_{1B}$	rpm	1,2	3~100	6,000	6,000	6,000	5,000	4,000	3,000	3,000
Backlash (Precision class)		arcmin	1	3~10	≤3	≤3	≤3	≤3	≤3	≤3	≤3
			2	15~100	≤5	≤5	≤5	≤5	≤5	≤5	≤5
Torsional Rigidity		Nm/arcmin	1,2	3~100	5	12	23	38	110	210	430
Max. Radial load <sup>2</sup>	$F_{2rB}$	N	1,2	3~100	3,000	4,300	6,900	10,000	19,000	24,000	30,000
Max. Axial load <sup>2</sup>	$F_{2aB}$	N	1,2	3~100	2,700	3,900	6,300	90,000	17,000	22,000	27,000
Service life	$L_H$	hr	1,2	3~100	20,000	20,000	20,000	20,000	20,000	20,000	20,000
Noise level <sup>3</sup>		dB(A)	1,2	3~100	≤ 58	≤ 60	≤ 63	≤ 65	≤ 67	≤ 70	≤ 73
Weight		kg	1	3~10	1.6	3.4	8.1	17	39	59	85
			2	15~100	1.8	3.8	8.8	19	39	60	89
Mass Moments of Inertia <sup>4</sup>		kg cm <sup>2</sup>	1	3~10	0.16	0.85	3.6	13	43	53	130
			2	15~100	0.13	0.71	2.8	11	34	35	39
Operating Temp. <sup>5</sup>		°C	1,2	3~100	-10 ~ +90						
Lubrication			1,2	3~100	High temperature & Extreme pressure Lubricant						
Mounting position			1,2	3~100	All directions						
Efficiency	$\eta$	%	1	3~10	≥ 95						
			2	15~100	≥ 92						
Degree of protection			1,2	3~100	IP 65						

(1) Ratio (감속비) =  $N_{in} / N_{out}$

(2) 기준 : 출력회전수 100rpm, 출력축 중앙 부하, 부하계수( $K_a$ )=1, 연속운전 10,000시간

These values are based on the following conditions : 100 rpm at the output. Load applied to the middle of the output shaft.

Load coefficient( $K_a$ )=1. Continuous operation( $S_1 \approx 10,000$ hrs).

(3) 입력 회전수 3000 rpm, 무부하 운전상태에서 감속기 취부면에서 1m 떨어진 거리에서 측정 (모델에 따라 차이가 있을수 있습니다)

Noise level : A measurement 1m away from the reducer (with ratio 10 or ratio 100), 3000 input rpm and at no load condition.

(Background noise 40dB(A)) With lower ratio and/or higher rpm, the noise level could be 3 to 5 dB higher.

(4) 관성모멘트 : 감속비 중 대표값 ( $i=1/5$ )

Moment of inertia : A measurement at the input shaft and representatives from each ratio.( $i=1/5$ )

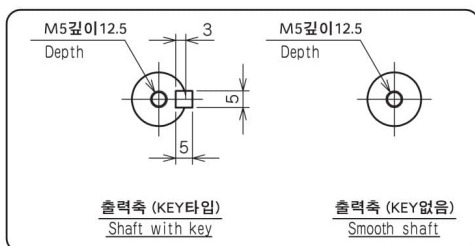
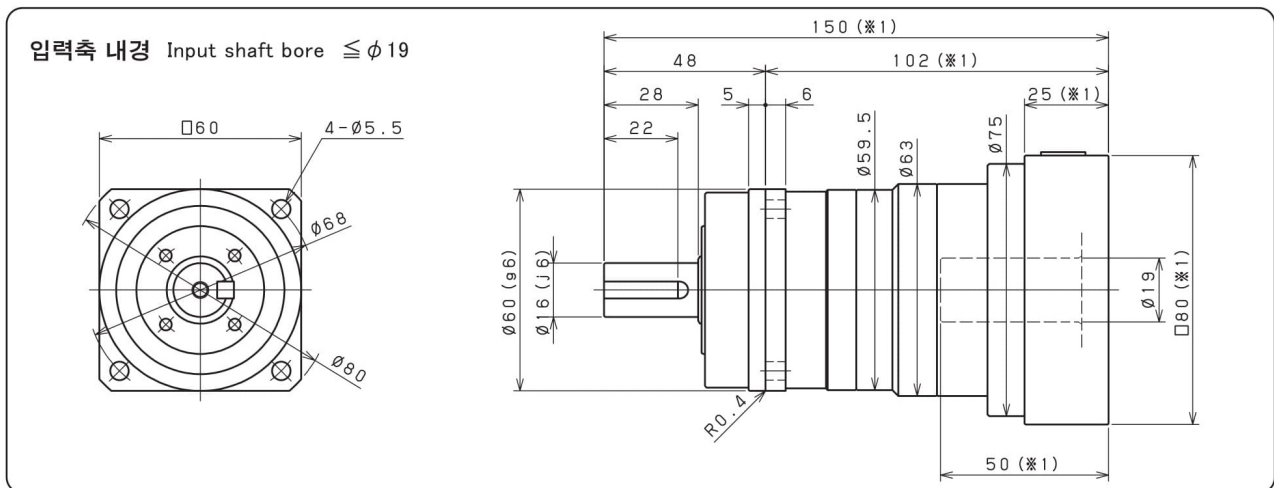
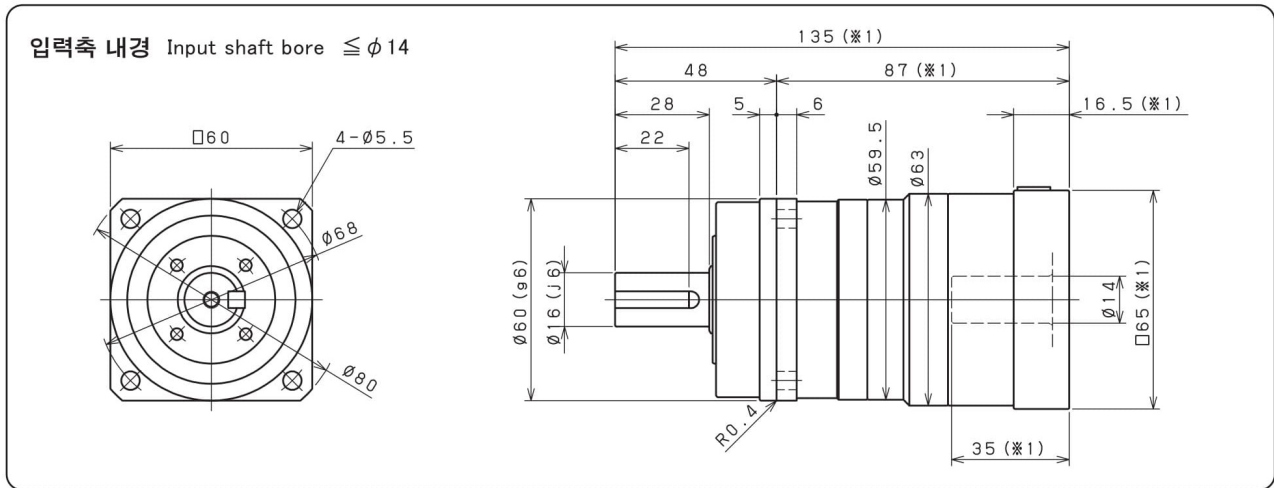
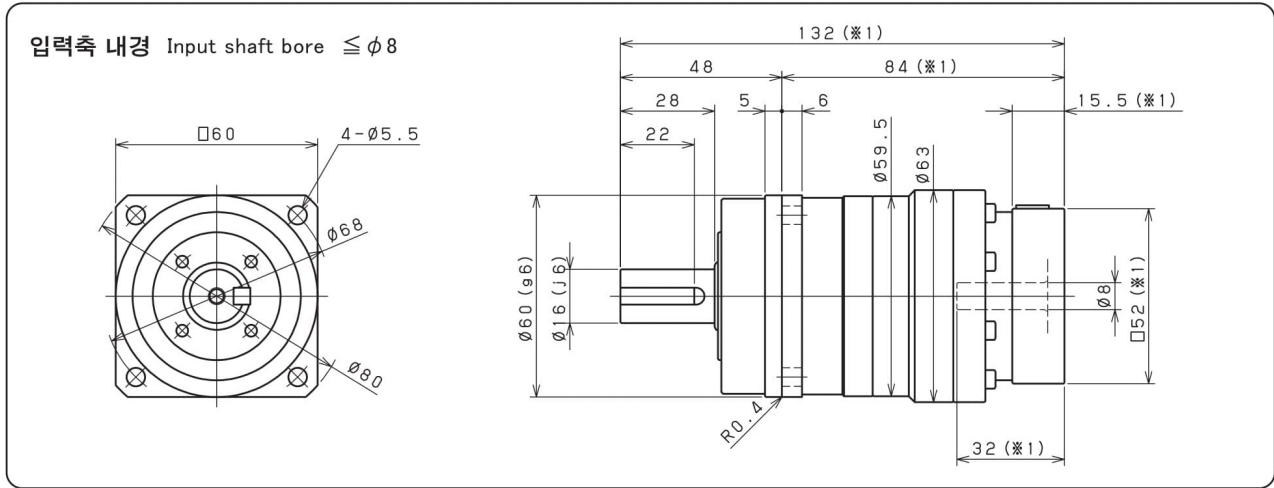
(5) 감속기 작동온도 : -10~+90 °C, 감속기 주위온도 -10~40°C

Operating temperature : Surface temperature of gear case in -10 °C~40 °C of ambient temperature.

※ 제품 성능 향상을 위해 사양은 별도의 고지 없이 변경될 수 있습니다.

Specifications are subject to change without notice to improve product performances.

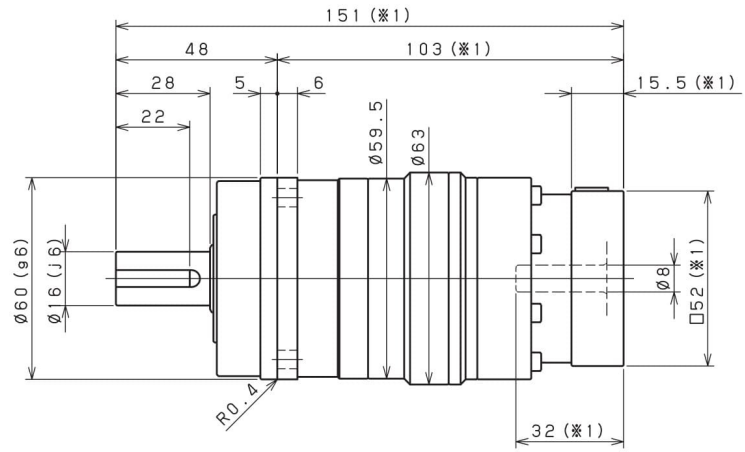
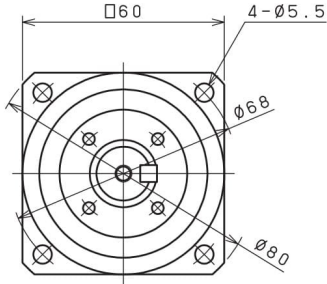
### SMS 060 1단 1stage



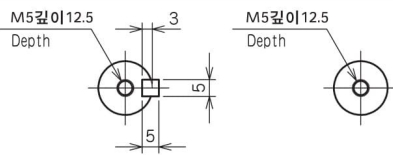
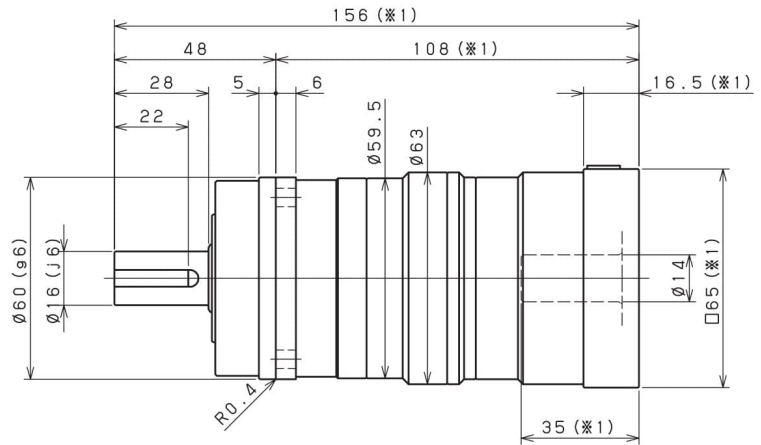
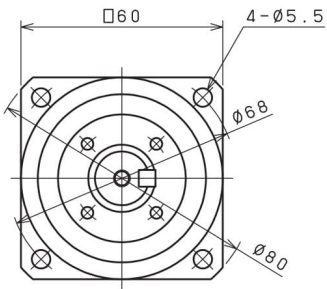
- ※1 적용 모터에 따라 길이는 변경될 수 있습니다.
- ※2 모터 축과 감속기의 입력축 내경이 다를 경우에는 부싱이 삽입됩니다.
- ※1 Length will vary depending on motor.
- ※2 Bushing will be inserted to adapt to motor shaft.

### SMS 060 2단 2stage

입력축 내경 Input shaft bore  $\leq \phi 8$



입력축 내경 Input shaft bore  $\leq \phi 14$



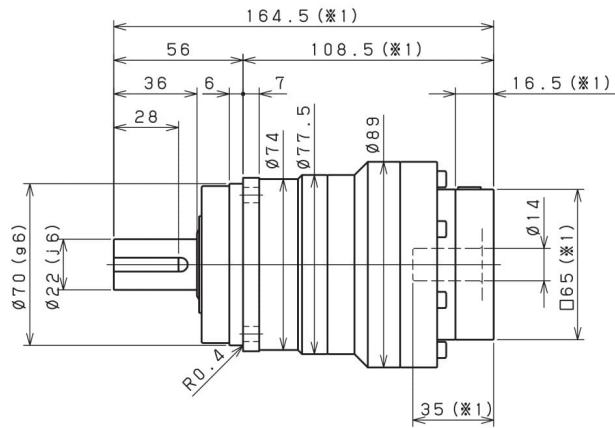
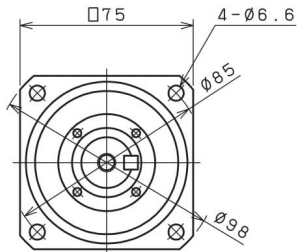
출력축 (KEY타입)  
Shaft with key

출력축 (KEY없음)  
Smooth shaft

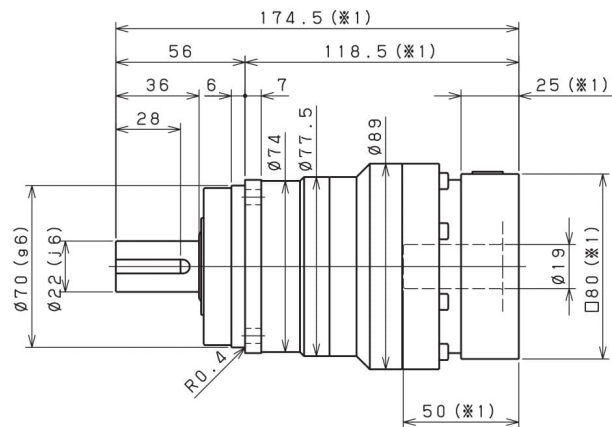
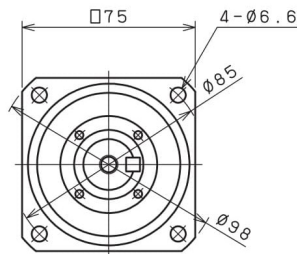
- ※1 적용 모터에 따라 길이는 변경될 수 있습니다.
- ※2 모터 축과 감속기의 입력축 내경이 다를 경우에는 부싱이 삽입됩니다.
- ※1 Length will vary depending on motor.
- ※2 Bushing will be inserted to adapt to motor shaft.

### SMS 075 1단 1stage

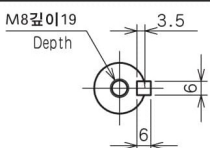
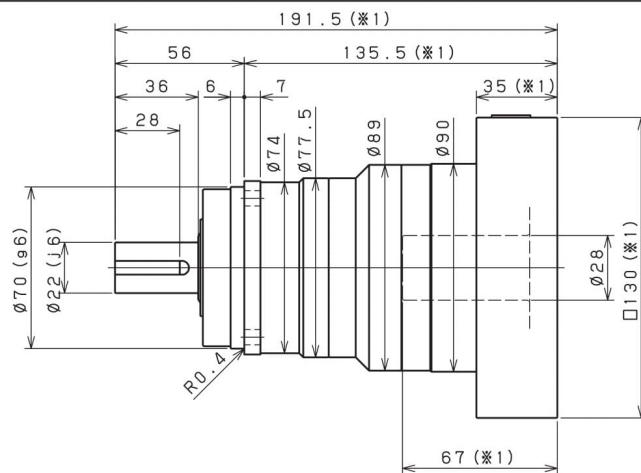
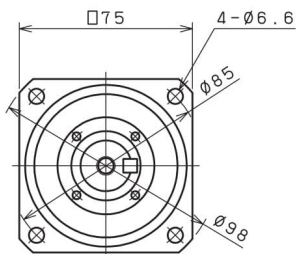
입력축 내경 Input shaft bore  $\leq \phi 14$



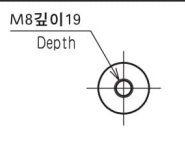
입력축 내경 Input shaft bore  $\leq \phi 19$



입력축 내경 Input shaft bore  $\leq \phi 28$



출력축 (KEY타입)  
Shaft with key

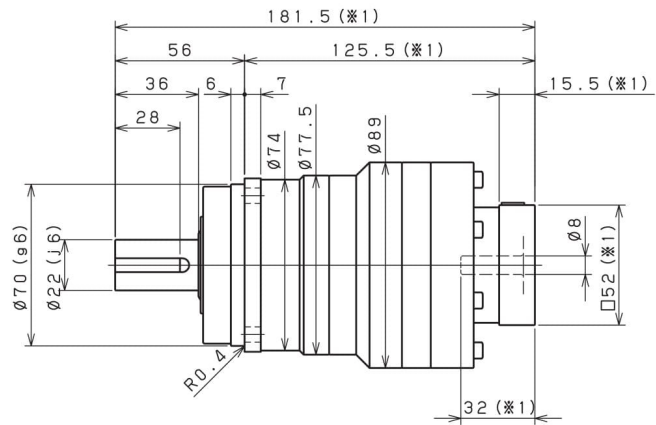
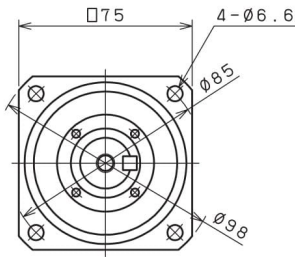


출력축 (KEY없음)  
Smooth shaft

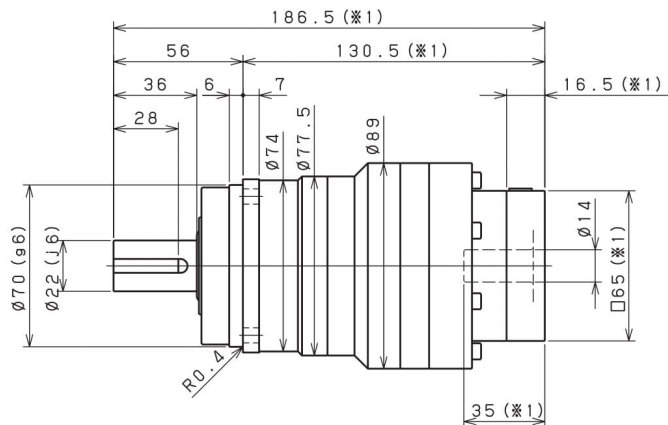
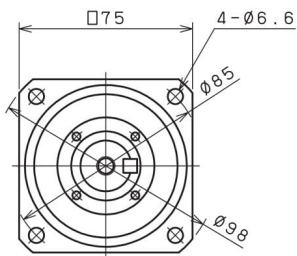
- ※ 1 적용 모터에 따라 길이는 변경될 수 있습니다.
- ※ 2 모터 축과 감속기의 입력축 내경이 다를 경우에는 부싱이 삽입됩니다.
- ※ 1 Length will vary depending on motor.
- ※ 2 Bushing will be inserted to adapt to motor shaft.

### SMS 075 2단 2stage

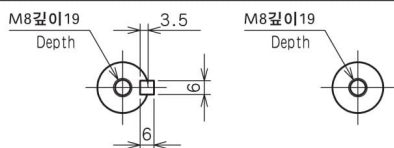
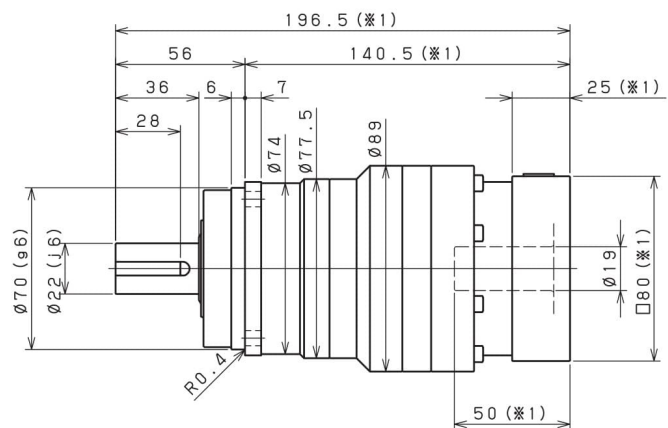
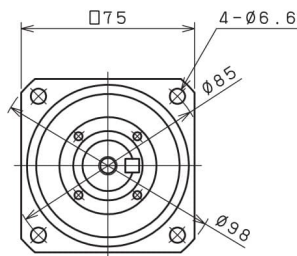
입력축 내경 Input shaft bore  $\leq \phi 8$



입력축 내경 Input shaft bore  $\leq \phi 14$



입력축 내경 Input shaft bore  $\leq \phi 19$



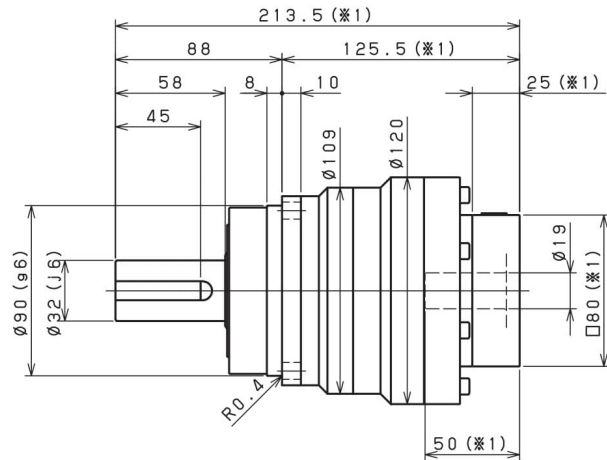
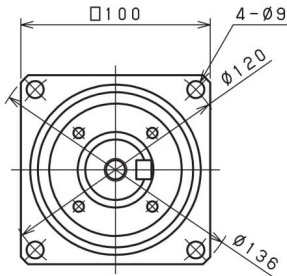
출력축 (KEY타입)  
Shaft with key

출력축 (KEY없음)  
Smooth shaft

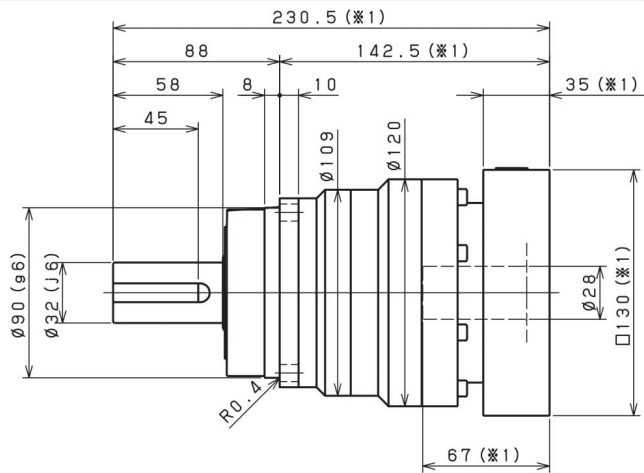
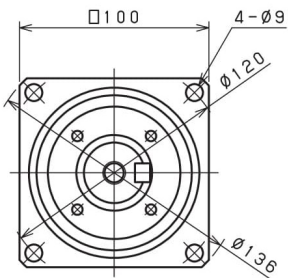
- ※1 적용 모터에 따라 길이는 변경될 수 있습니다.
- ※2 모터 축과 감속기의 입력축 내경이 다를 경우에는 부싱이 삽입됩니다.
- ※1 Length will vary depending on motor.
- ※2 Bushing will be inserted to adapt to motor shaft.

### SMS 100 1단 1stage

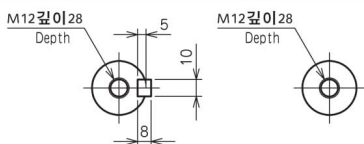
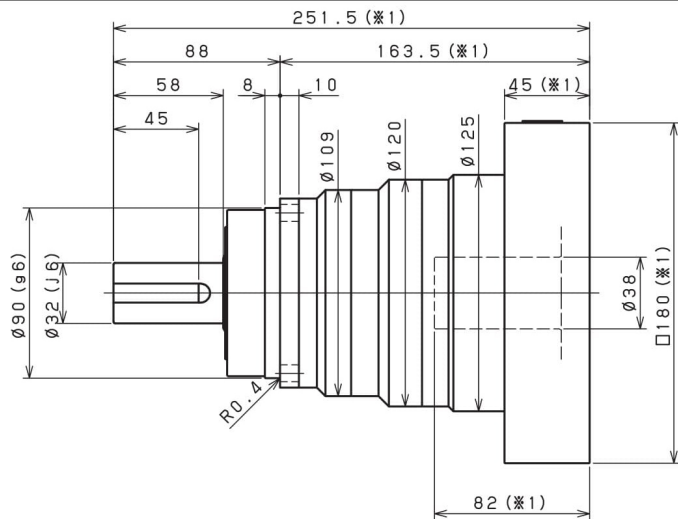
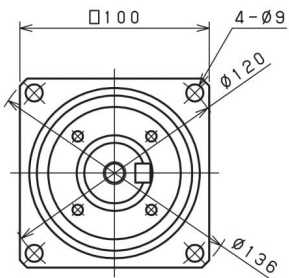
입력축 내경 Input shaft bore  $\leq \phi 19$



입력축 내경 Input shaft bore  $\leq \phi 28$



입력축 내경 Input shaft bore  $\leq \phi 38$



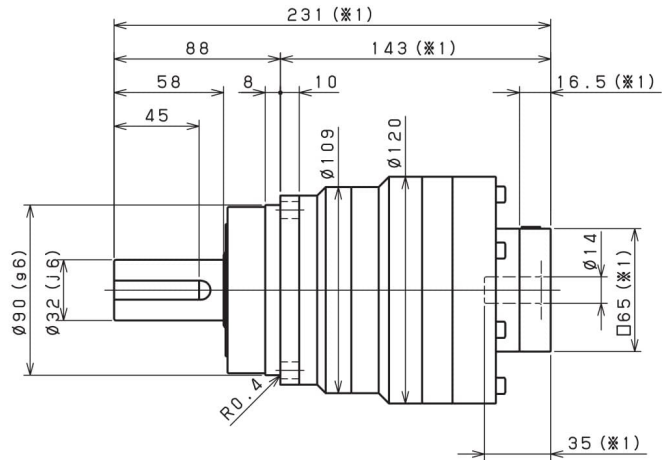
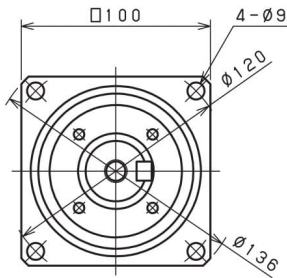
출력축 (KEY타입)  
Shaft with key

출력축 (KEY없음)  
Smooth shaft

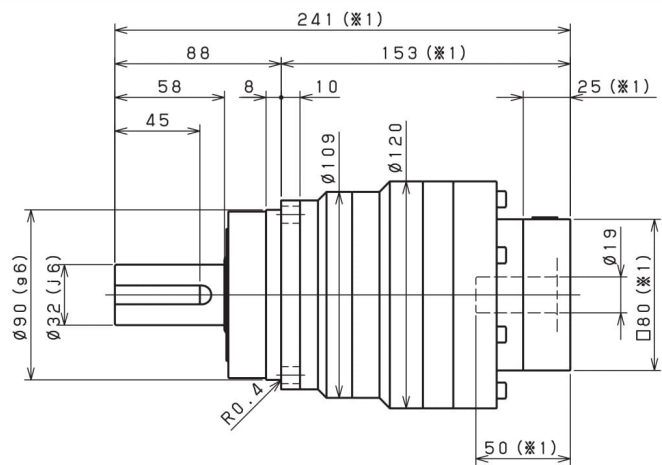
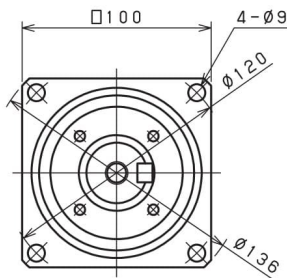
- ※ 1 적용 모터에 따라 길이는 변경될 수 있습니다.
- ※ 2 모터 축과 감속기의 입력축 내경이 다를 경우에는 부싱이 삽입됩니다.
- ※ 1 Length will vary depending on motor.
- ※ 2 Bushing will be inserted to adapt to motor shaft.

### SMS 100 2단 2stage

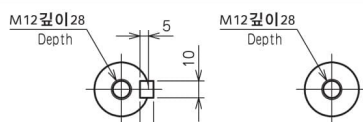
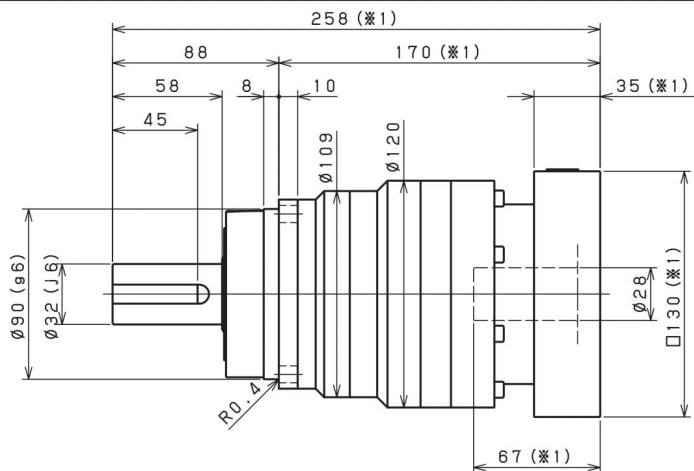
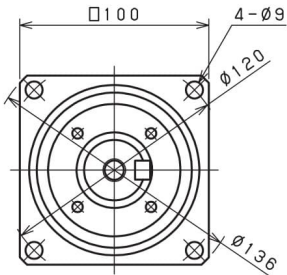
입력축 내경 Input shaft bore  $\leq \phi 14$



입력축 내경 Input shaft bore  $\leq \phi 19$



입력축 내경 Input shaft bore  $\leq \phi 28$



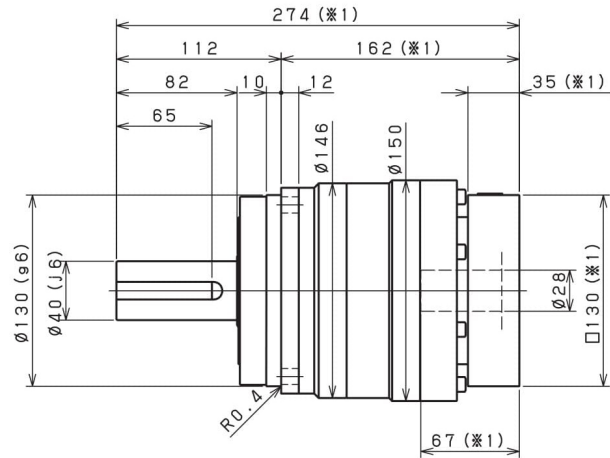
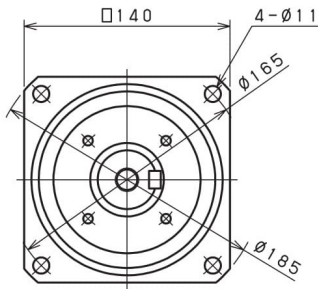
출력축 (KEY타입)  
Shaft with key

출력축 (KEY없음)  
Smooth shaft

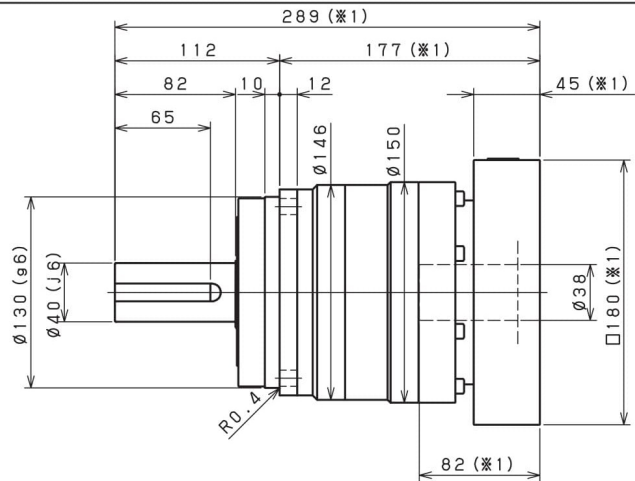
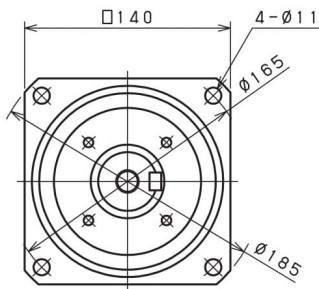
- ※1 적용 모터에 따라 길이는 변경될 수 있습니다.
- ※2 모터 축과 감속기의 입력축 내경이 다를 경우에는 부싱이 삽입됩니다.
- ※1 Length will vary depending on motor.
- ※2 Bushing will be inserted to adapt to motor shaft.

## SMS 140 1단 1stage

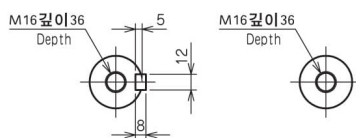
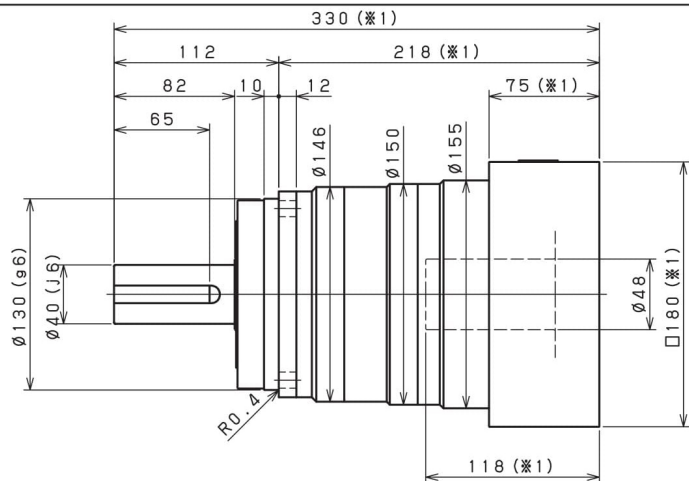
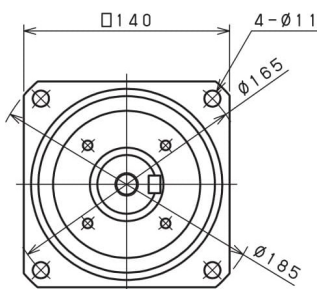
입력축 내경 Input shaft bore  $\leq \phi 28$



입력축 내경 Input shaft bore  $\leq \phi 38$



입력축 내경 Input shaft bore  $\leq \phi 48$



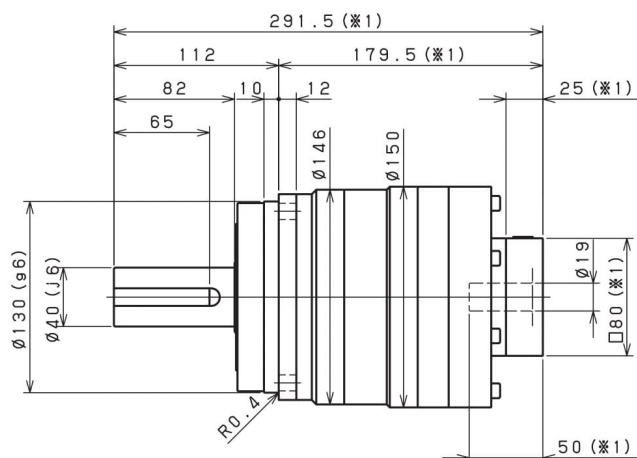
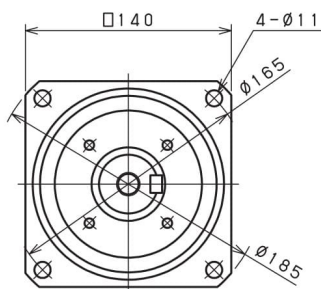
출력축 (KEY타입)  
Shaft with key

출력축 (KEY없음)  
Smooth shaft

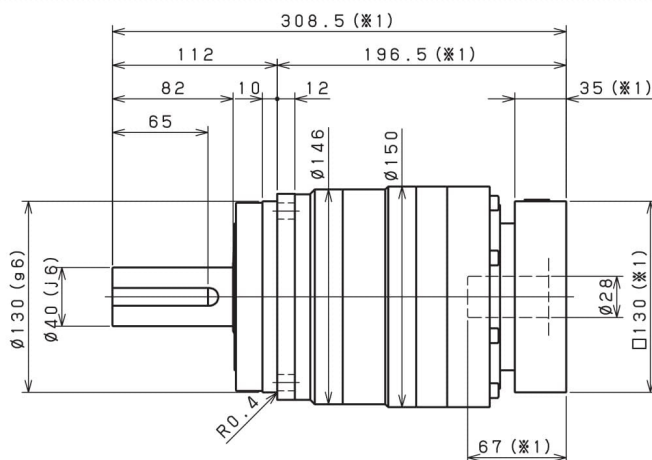
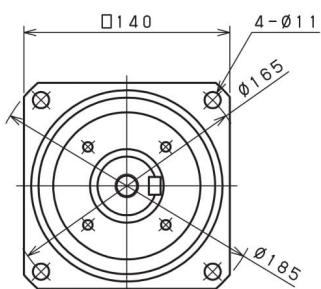
- ※ 1 적용 모터에 따라 길이는 변경될 수 있습니다.
- ※ 2 모터 축과 감속기의 입력축 내경이 다를 경우에는 부싱이 삽입됩니다.
- ※ 1 Length will vary depending on motor.
- ※ 2 Bushing will be inserted to adapt to motor shaft.

## SMS 140 2단 2stage

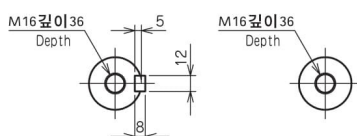
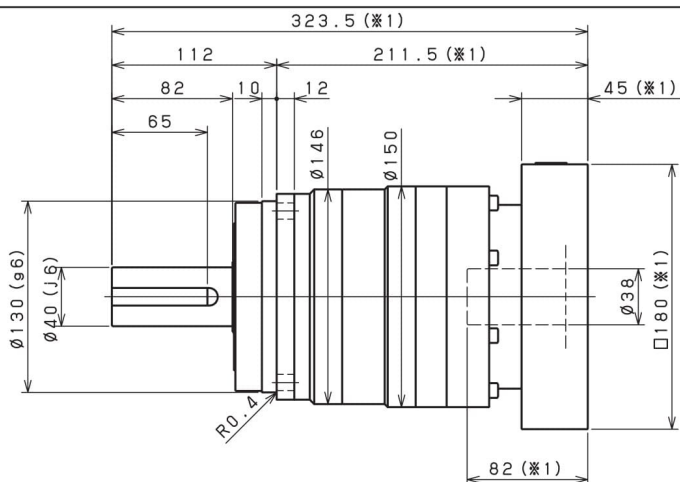
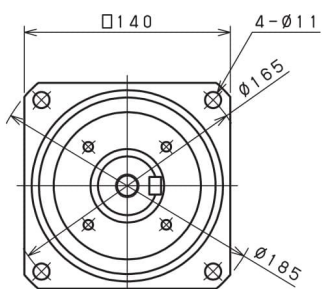
입력축 내경 Input shaft bore  $\leq \phi 19$



입력축 내경 Input shaft bore  $\leq \phi 28$



입력축 내경 Input shaft bore  $\leq \phi 38$



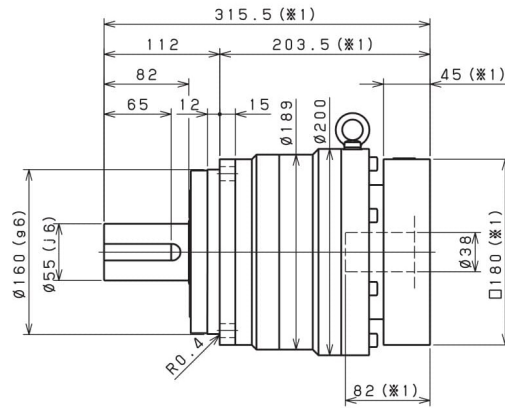
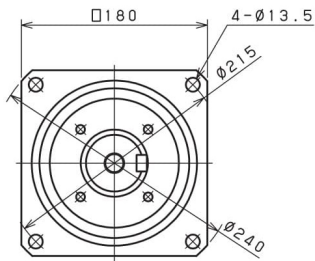
출력축 (KEY타입)  
Shaft with key

출력축 (KEY없음)  
Smooth shaft

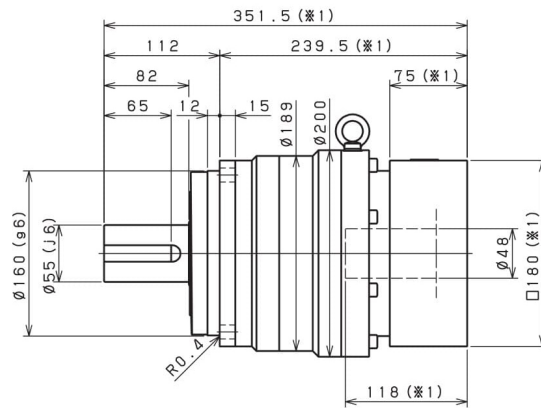
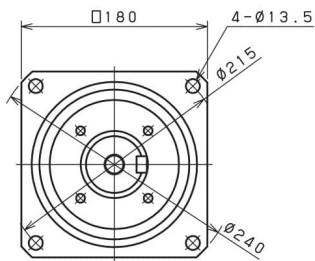
- ※1 적용 모터에 따라 길이는 변경될 수 있습니다.
- ※2 모터 축과 감속기의 입력축 내경이 다를 경우에는 부싱이 삽입됩니다.
- ※1 Length will vary depending on motor.
- ※2 Bushing will be inserted to adapt to motor shaft.

### SMS 180 1단 1stage

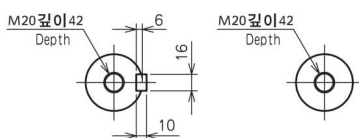
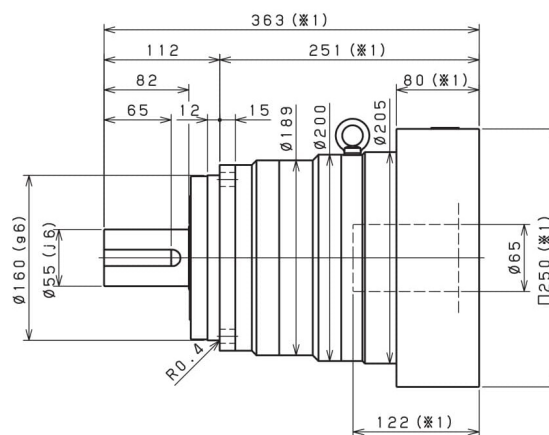
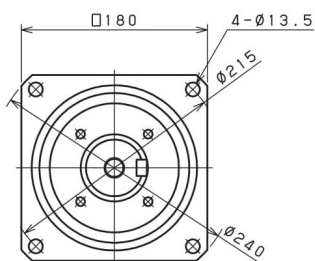
입력축 내경 Input shaft bore  $\leq \phi 38$



입력축 내경 Input shaft bore  $\leq \phi 48$



입력축 내경 Input shaft bore  $\leq \phi 65$



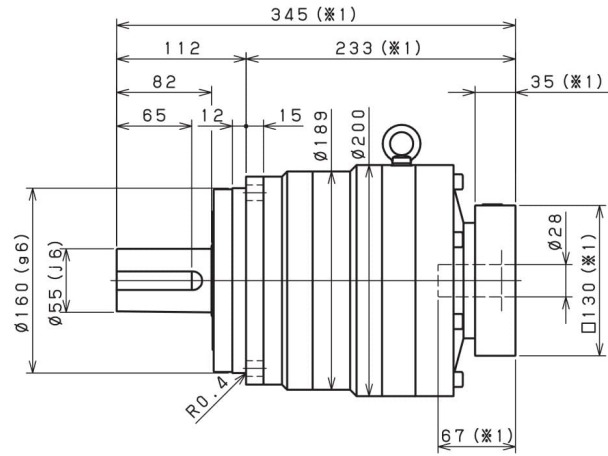
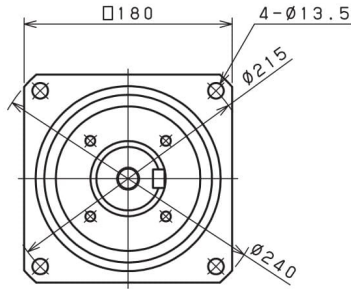
출력축 (KEY타입)  
Shaft with key

출력축 (KEY없음)  
Smooth shaft

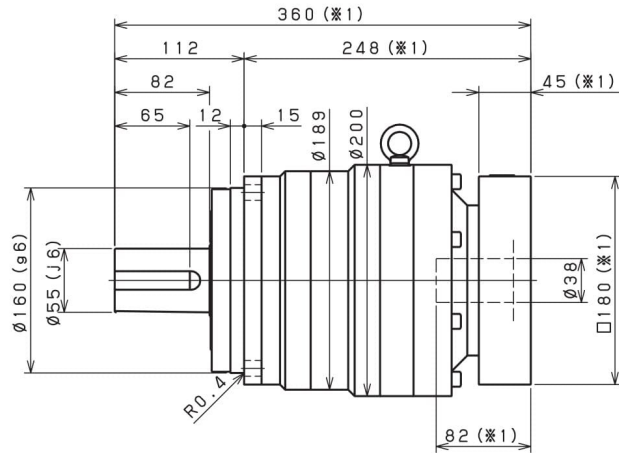
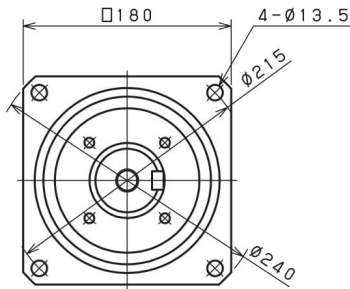
- ※ 1 적용 모터에 따라 길이는 변경될 수 있습니다.
- ※ 2 모터 축과 감속기의 입력축 내경이 다를 경우에는 부싱이 삽입됩니다.
- ※ 1 Length will vary depending on motor.
- ※ 2 Bushing will be inserted to adapt to motor shaft.

## SMS 180 2단 2stage

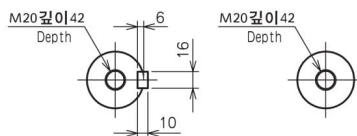
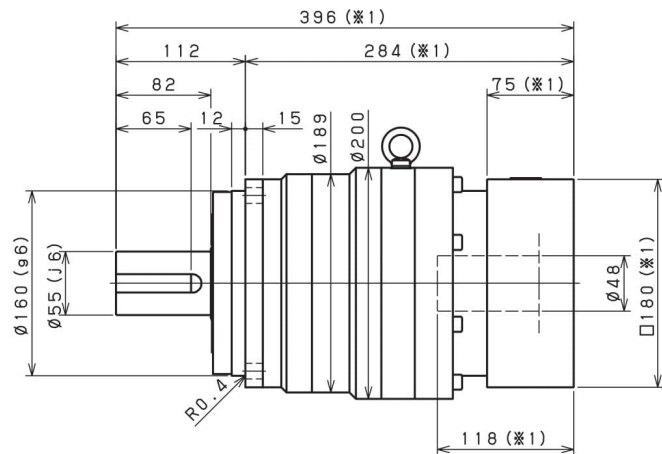
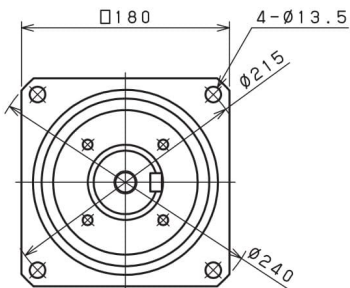
입력축 내경 Input shaft bore  $\leq \phi 28$



입력축 내경 Input shaft bore  $\leq \phi 38$



입력축 내경 Input shaft bore  $\leq \phi 48$



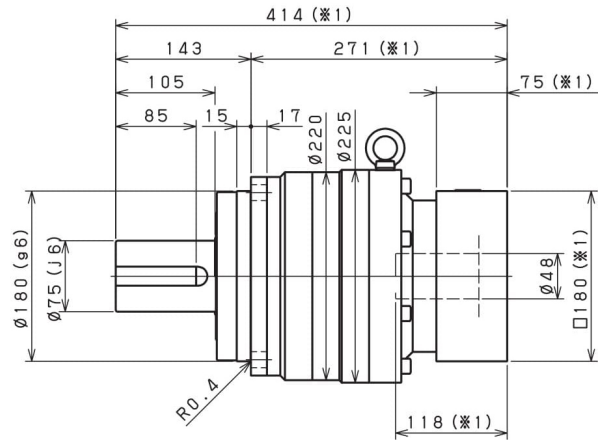
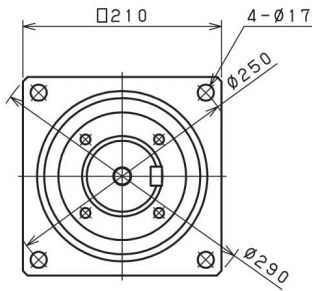
출력축 (KEY타입)  
Shaft with key

출력축 (KEY없음)  
Smooth shaft

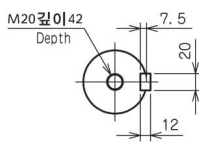
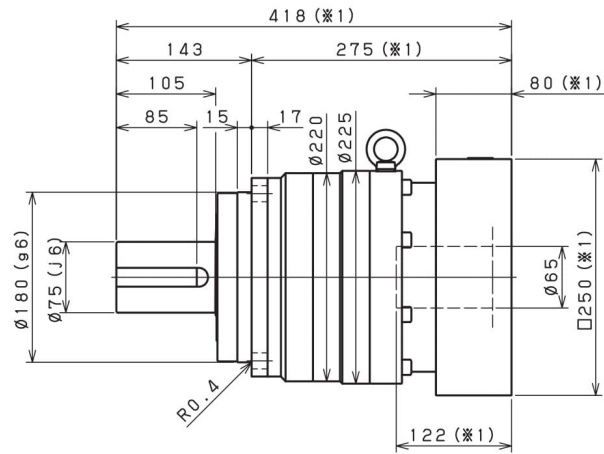
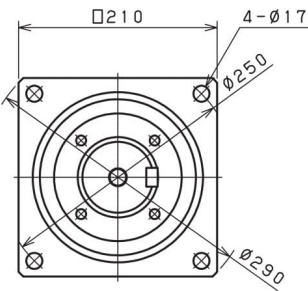
- ※1 적용 모터에 따라 길이는 변경될 수 있습니다.
- ※2 모터 축과 감속기의 입력축 내경이 다를 경우에는 부싱이 삽입됩니다.
- ※1 Length will vary depending on motor.
- ※2 Bushing will be inserted to adapt to motor shaft.

### SMS 210 1단 1stage

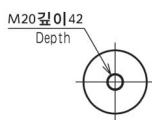
입력축 내경 Input shaft bore  $\leq \phi 48$



입력축 내경 Input shaft bore  $\leq \phi 65$



출력축 (KEY타입)  
Shaft with key

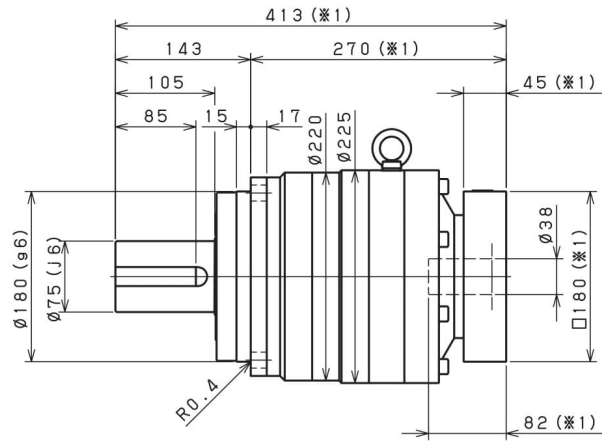
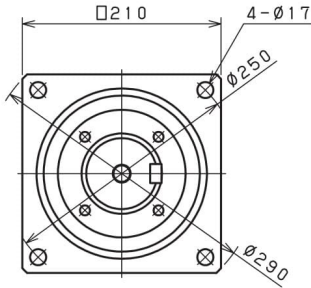


출력축 (KEY없음)  
Smooth shaft

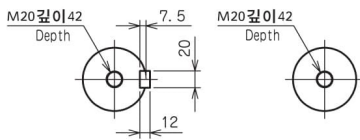
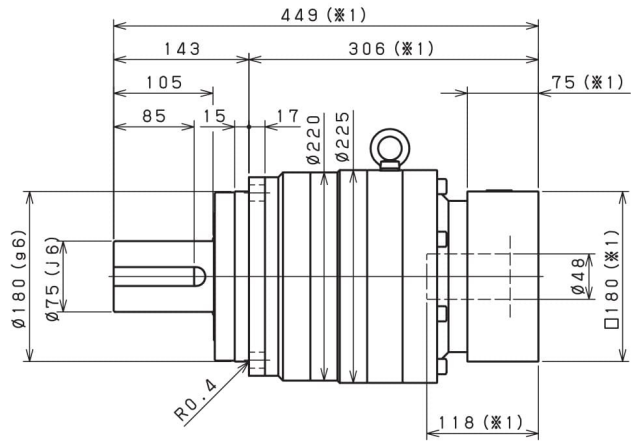
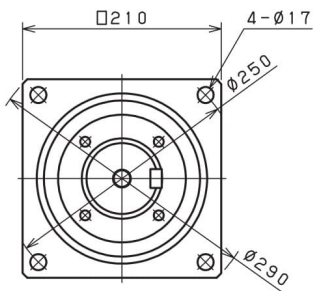
- ※ 1 적용 모터에 따라 길이는 변경될 수 있습니다.
- ※ 2 모터 축과 감속기의 입력축 내경이 다를 경우에는 부싱이 삽입됩니다.
- ※ 1 Length will vary depending on motor.
- ※ 2 Bushing will be inserted to adapt to motor shaft.

### SMS 210 2단 2stage

입력축 내경 Input shaft bore  $\leq \phi 38$



입력축 내경 Input shaft bore  $\leq \phi 48$

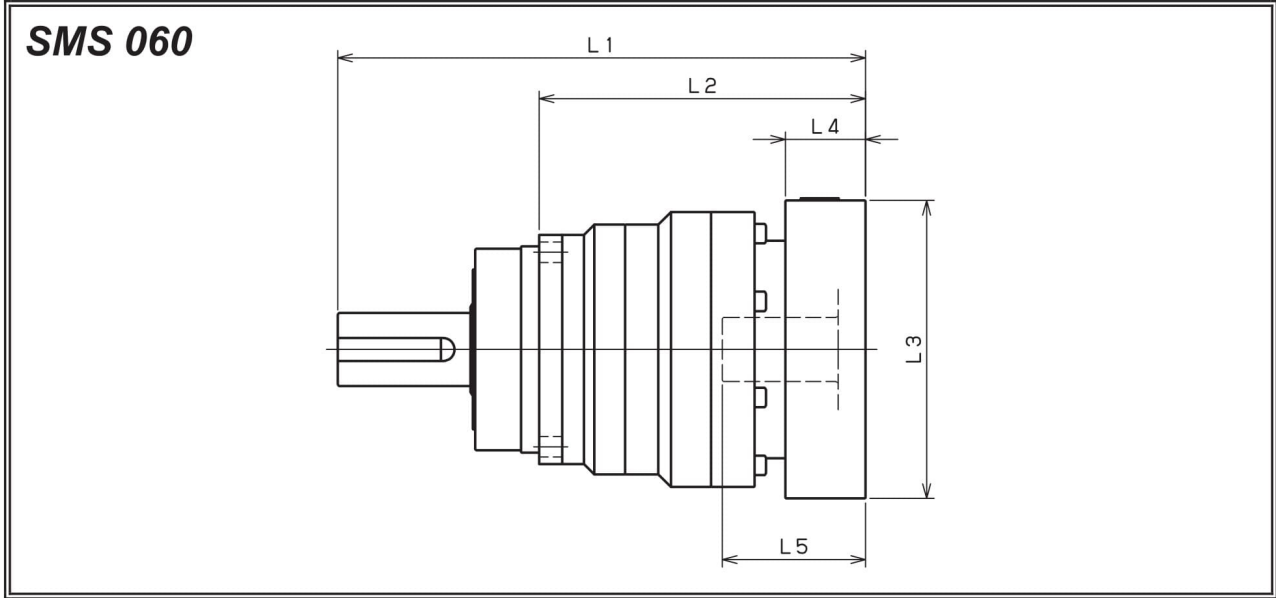


출력축 (KEY타입)  
Shaft with key

출력축 (KEY없음)  
Smooth shaft

- ※1 적용 모터에 따라 길이는 변경될 수 있습니다.
- ※2 모터 축과 감속기의 입력축 내경이 다를 경우에는 부싱이 삽입됩니다.
- ※1 Length will vary depending on motor.
- ※2 Bushing will be inserted to adapt to motor shaft.





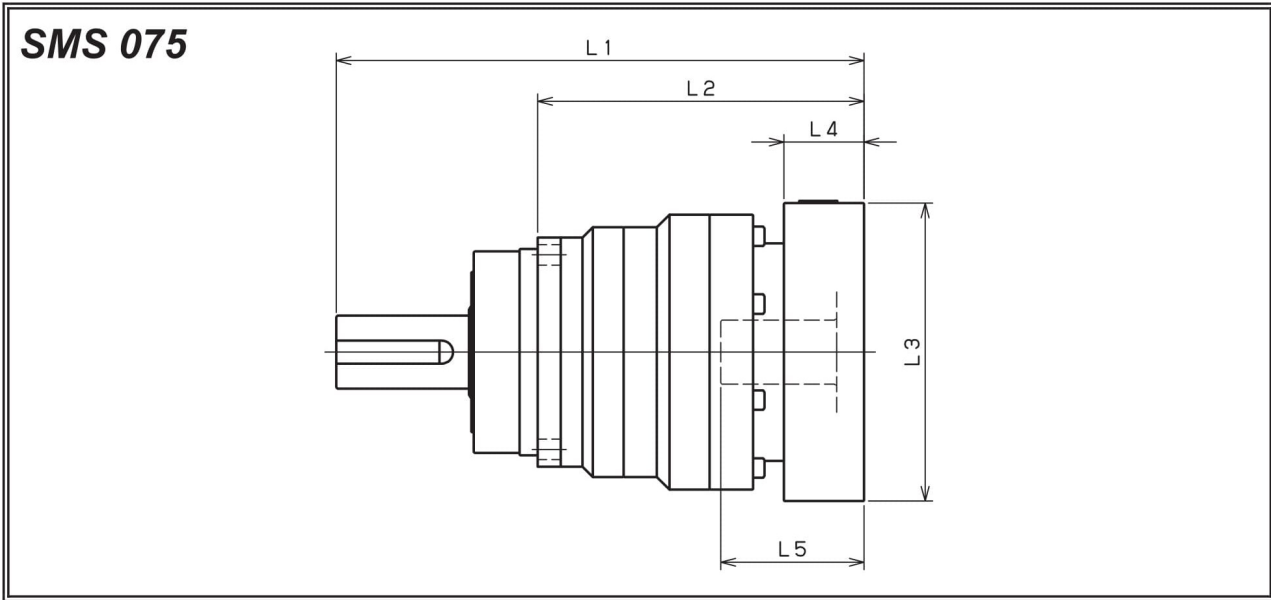
모델명 Model number	** : 어댑터 코드 ** : Adapter code (Mount code)	1단 Single					2단 Double				
		L1	L2	L3	L4	L5	L1	L2	L3	L4	L5
SMS060□□□-8** (입력축 내경 $\leq \phi 8$ ) Input shaft bore $\leq \phi 8$	AA·AC·AD·AF·AG	132	84	□52	15.5	32	151	103	□52	15.5	32
	AB·AE·AH·AJ·AK	137	89	□52	20.5	37	156	108	□52	20.5	37
	BA·BB·BD·BE	132	84	□60	15.5	32	151	103	□60	15.5	32
	BC·BF	137	89	□60	20.5	37	156	108	□60	20.5	37
	CA	137	89	□70	20.5	37	156	108	□70	20.5	37
SMS060□□□-14** (입력축 내경 $\leq \phi 14$ ) Input shaft bore $\leq \phi 14$	BA·BB·BD·BE·BF·BG·BJ·BK	135	87	□65	16.5	35	156	108	□65	16.5	35
	BC·BH·BM	140	92	□65	21.5	40	161	113	□65	21.5	40
	BL	145	97	□65	26.5	45	166	118	□65	26.5	45
	CA	135	87	□70	16.5	35	156	108	□70	16.5	35
	CB	140	92	□70	21.5	40	161	113	□70	21.5	40
	DA·DB·DC·DD·DF·DH	135	87	□80	16.5	35	156	108	□80	16.5	35
	DE	140	92	□80	21.5	40	161	113	□80	21.5	40
	DG	145	97	□80	26.5	45	166	118	□80	26.5	45
	EA·EB·EC	135	87	□90	16.5	35	156	108	□90	16.5	35
	ED	145	97	□90	26.5	45	166	118	□90	26.5	45
	FA	135	87	□100	16.5	35	156	108	□100	16.5	35
	GA	135	87	□115	16.5	35	156	108	□115	16.5	35
SMS060□□□-19** (입력축 내경 $\leq \phi 19$ ) Input shaft bore $\leq \phi 19$	DA·DB·DC	150	102	□80	25	50					
	DD	160	112	□80	35	60					
	DE	155	107	□80	30	55					
	EA	155	107	□90	30	55					
	EB	150	102	□90	25	50					
	EC	160	112	□90	35	60					
	FA	150	102	□100	25	50					
	FB	160	112	□100	35	60					
	GA·GC	155	107	□115	30	55					
	GB·GD	150	102	□115	25	50					
	HA	150	102	□130	25	50					
	HB	165	117	□130	40	65					
HC·HD·HE	155	107	□130	30	55						

※1 1단 감속비: 1/3~1/10 ; 2단 감속비: 1/15~1/100

※2 모터 축과 감속기의 입력축 내경이 다를 경우에는 부싱이 삽입됩니다.

※1 Single reduction : 1/3 ~ 1/10, Double reduction : 1/15 ~ 1/100

※2 Bushing will be inserted to adapt to motor shaft.



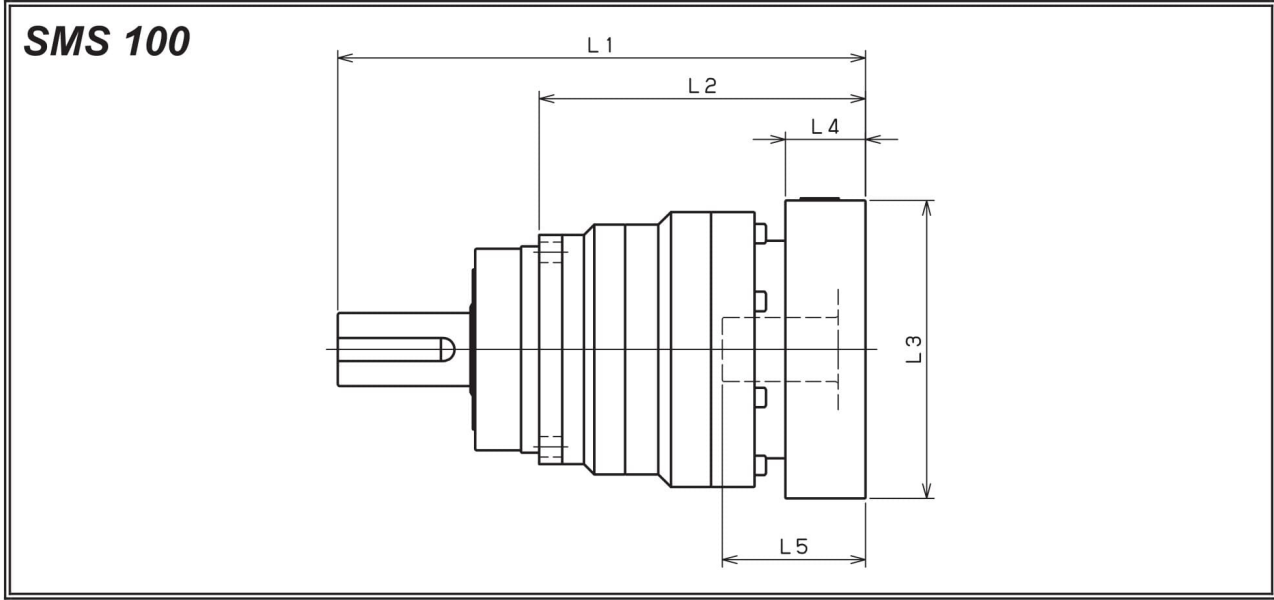
모델명 Model number	** : 어댑터 코드 ** : Adapter code (Mount code)	1단 Single					2단 Double				
		L1	L2	L3	L4	L5	L1	L2	L3	L4	L5
SMS075□□□-8** ( 입력축 내경 ≤ φ8 Input shaft bore ≤ φ8 )	AA·AC·AD·AF·AG	/	/	/	/	/	181.5	125.5	□52	15.5	32
	AB·AE·AH·AJ·AK	/	/	/	/	/	186.5	130.5	□52	20.5	37
	BA·BB·BD·BE	/	/	/	/	/	181.5	125.5	□60	15.5	32
	BC·BF	/	/	/	/	/	186.5	130.5	□60	20.5	37
	CA	/	/	/	/	/	186.5	130.5	□70	20.5	37
SMS075□□□-14** ( 입력축 내경 ≤ φ14 Input shaft bore ≤ φ14 )	BA·BB·BD·BE·BF·BG·BJ·BK	164.5	108.5	□65	16.5	35	186.5	130.5	□65	16.5	35
	BC·BH·BM	169.5	113.5	□65	21.5	40	191.5	135.5	□65	21.5	40
	BL	174.5	118.5	□65	26.5	45	196.5	140.5	□65	26.5	45
	CA	164.5	108.5	□70	16.5	35	186.5	130.5	□70	16.5	35
	CB	169.5	113.5	□70	21.5	40	191.5	135.5	□70	21.5	40
	DA·DB·DC·DD·DF·DH	164.5	108.5	□80	16.5	35	186.5	130.5	□80	16.5	35
	DE	169.5	113.5	□80	21.5	40	191.5	135.5	□80	21.5	40
	DG	174.5	118.5	□80	26.5	45	196.5	140.5	□80	26.5	45
	EA·EB·EC	164.5	108.5	□90	16.5	35	186.5	130.5	□90	16.5	35
	ED	174.5	118.5	□90	26.5	45	196.5	140.5	□90	26.5	45
	FA	164.5	108.5	□100	16.5	35	186.5	130.5	□100	16.5	35
GA	164.5	108.5	□115	16.5	35	186.5	130.5	□115	16.5	35	
SMS075□□□-19** ( 입력축 내경 ≤ φ19 Input shaft bore ≤ φ19 )	DA·DB·DC	174.5	118.5	□80	25	50	196.5	140.5	□80	25	50
	DD	184.5	128.5	□80	35	60	206.5	150.5	□80	35	60
	DE	179.5	123.5	□80	30	55	201.5	145.5	□80	30	55
	EA	179.5	123.5	□90	30	55	201.5	145.5	□90	30	55
	EB	174.5	118.5	□90	25	50	196.5	140.5	□90	25	50
	EC	184.5	128.5	□90	35	60	206.5	150.5	□90	35	60
	FA	174.5	118.5	□100	25	50	196.5	140.5	□100	25	50
	FB	184.5	128.5	□100	35	60	206.5	150.5	□100	35	60
	GA·GC	179.5	123.5	□115	30	55	201.5	145.5	□115	30	55
	GB·GD	174.5	118.5	□115	25	50	196.5	140.5	□115	25	50
	HA	174.5	118.5	□130	25	50	196.5	140.5	□130	25	50
HB	189.5	133.5	□130	40	65	211.5	155.5	□130	40	65	
HC·HD·HE	179.5	123.5	□130	30	55	201.5	145.5	□130	30	55	
SMS075□□□-28** ( 입력축 내경 ≤ φ28 Input shaft bore ≤ φ28 )	FA·FB·FC	191.5	135.5	□100	35	67	/	/	/	/	/
	GA·GB·GC·GD·GE·GF·GG	191.5	135.5	□115	35	67	/	/	/	/	/
	HA·HC·HD	191.5	135.5	□130	35	67	/	/	/	/	/
	HB	201.5	145.5	□130	45	77	/	/	/	/	/
	JA·JB·JC	191.5	135.5	□150	35	67	/	/	/	/	/
	KA·KB	191.5	135.5	□180	35	67	/	/	/	/	/
	KD	201.5	145.5	□180	45	77	/	/	/	/	/
	LA	191.5	135.5	□200	35	67	/	/	/	/	/
MA	191.5	135.5	□220	35	67	/	/	/	/	/	

※ 1 1단 감속비: 1/3~1/10 ; 2단 감속비: 1/15~1/100

※ 1 Single reduction : 1/3 ~ 1/10, Double reduction : 1/15 ~ 1/100

※ 2 모터 축과 감속기의 입력축 내경이 다를 경우에는 부싱이 삽입됩니다.

※ 2 Bushing will be inserted to adapt to motor shaft.



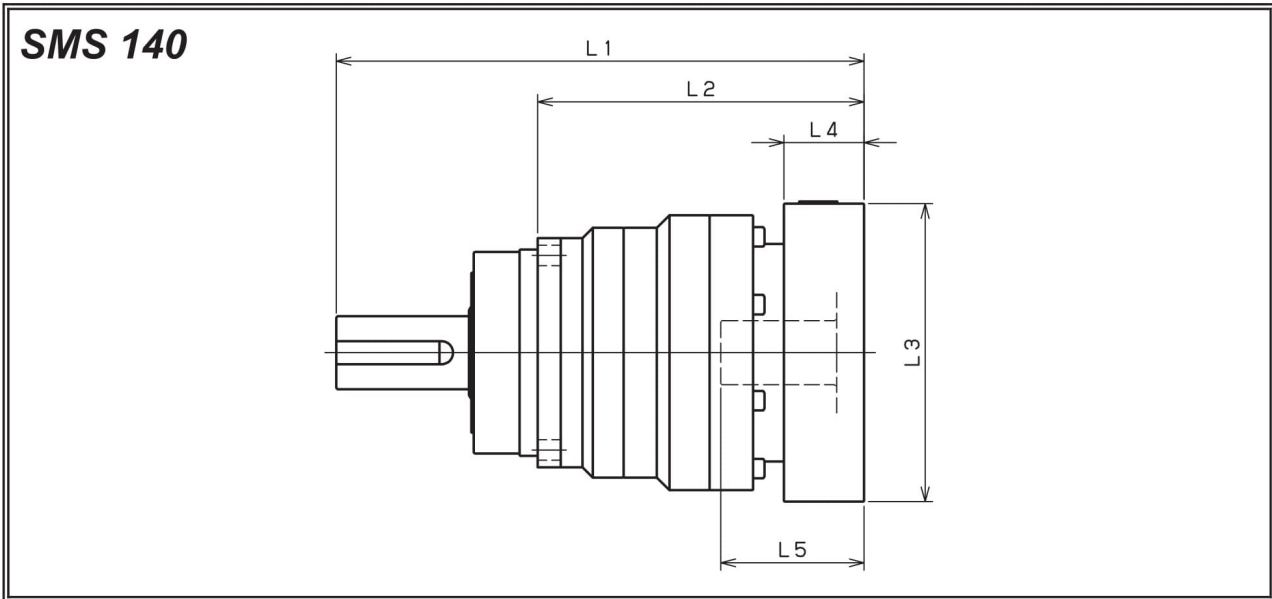
모델명 Model number	** : 어댑터 코드 ** : Adapter code (Mount code)	1단 Single					2단 Double				
		L1	L2	L3	L4	L5	L1	L2	L3	L4	L5
SMS100□□□-14** ( 입력축 내경 $\leq \phi 14$ )	BA·BB·BD·BE·BF·BG·BJ·BK	/	/	/	/	/	231	143	□65	16.5	35
	BC·BH·BM	/	/	/	/	/	236	148	□65	21.5	40
	BL	/	/	/	/	/	241	153	□65	26.5	45
	CA	/	/	/	/	/	231	143	□70	16.5	35
	CB	/	/	/	/	/	236	148	□70	21.5	40
	DA·DB·DC·DD·DF·DH	/	/	/	/	/	231	143	□80	16.5	35
	DE	/	/	/	/	/	236	148	□80	21.5	40
	DG	/	/	/	/	/	241	153	□80	26.5	45
	EA·EB·EC	/	/	/	/	/	231	143	□90	16.5	35
	ED	/	/	/	/	/	241	153	□90	26.5	45
	FA	/	/	/	/	/	231	143	□100	16.5	35
	GA	/	/	/	/	/	231	143	□115	16.5	35
	SMS100□□□-19** ( 입력축 내경 $\leq \phi 19$ )	DA·DB·DC	213.5	125.5	□80	25	50	241	153	□80	25
DD		223.5	135.5	□80	35	60	251	163	□80	35	60
DE		218.5	130.5	□80	30	55	246	158	□80	30	55
EA		218.5	130.5	□90	30	55	246	158	□90	30	55
EB		213.5	125.5	□90	25	50	241	153	□90	25	50
EC		223.5	135.5	□90	35	60	251	163	□90	35	60
FA		213.5	125.5	□100	25	50	241	153	□100	25	50
FB		223.5	135.5	□100	35	60	251	163	□100	35	60
GA·GC		218.5	130.5	□115	30	55	246	158	□115	30	55
GB·GD		213.5	125.5	□115	25	50	241	153	□115	25	50
HA		213.5	125.5	□130	25	50	241	153	□130	25	50
HB		228.5	140.5	□130	40	65	256	168	□130	40	65
HC·HD·HE		218.5	130.5	□130	30	55	246	158	□130	30	55
SMS100□□□-28** ( 입력축 내경 $\leq \phi 28$ )	FA·FB·FC	230.5	142.5	□100	35	67	258	170	□100	35	67
	GA·GB·GC·GD·GE·GF·GG	230.5	142.5	□115	35	67	258	170	□115	35	67
	HA·HC·HD	230.5	142.5	□130	35	67	258	170	□130	35	67
	HB	240.5	152.5	□130	45	77	268	180	□130	45	77
	JA·JB·JC	230.5	142.5	□150	35	67	258	170	□150	35	67
	KA·KB	230.5	142.5	□180	35	67	258	170	□180	35	67
	KD	240.5	152.5	□180	45	77	268	180	□180	45	77
	LA	230.5	142.5	□200	35	67	258	170	□200	35	67
	MA	230.5	142.5	□220	35	67	258	170	□220	35	67
SMS100□□□-38** ( 입력축 내경 $\leq \phi 38$ )	HA	251.5	163.5	□130	45	82	/	/	/	/	/
	HB	246.5	158.5	□130	40	77	/	/	/	/	/
	JA	251.5	163.5	□150	45	82	/	/	/	/	/
	KA·KB·KC	251.5	163.5	□180	45	82	/	/	/	/	/
	LA	251.5	163.5	□200	45	82	/	/	/	/	/
	LB	261.5	173.5	□200	55	92	/	/	/	/	/
	MA·MB	251.5	163.5	□220	45	82	/	/	/	/	/
	NA	251.5	163.5	□250	45	82	/	/	/	/	/

※1 1단 감속비: 1/3~1/10 ; 2단 감속비: 1/15~1/100

※2 모터 축과 감속기의 입력축 내경이 다를 경우에는 부싱이 삽입됩니다.

※1 Single reduction : 1/3 ~ 1/10, Double reduction : 1/15 ~ 1/100

※2 Bushing will be inserted to adapt to motor shaft.



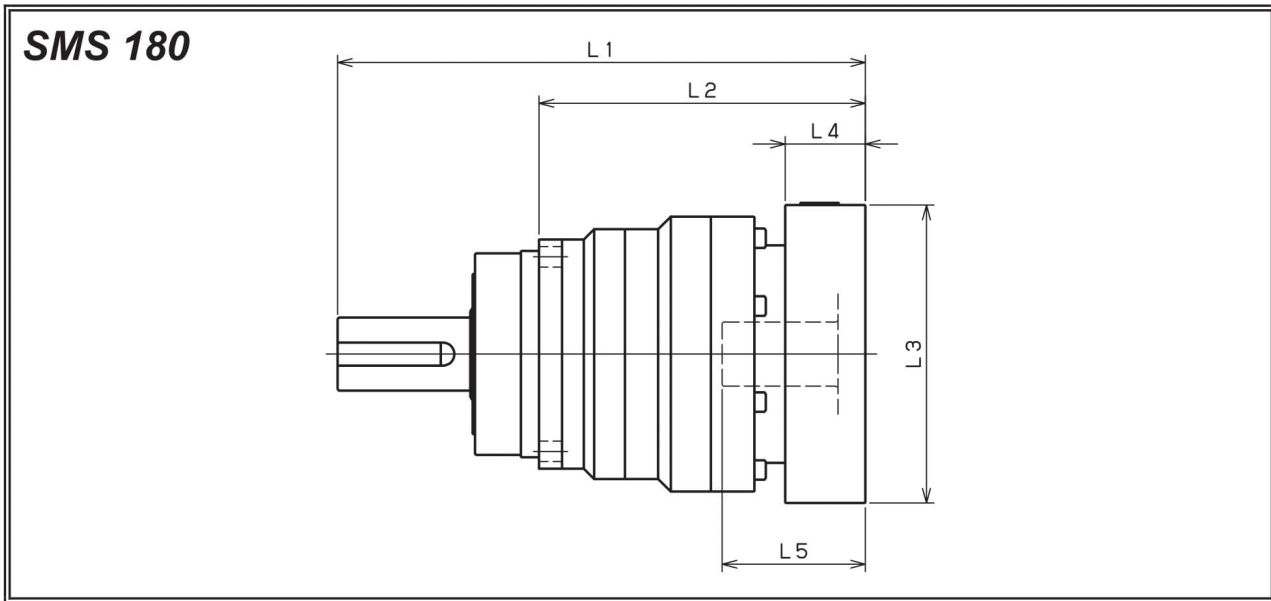
모델명 Model number	** : 어댑터 코드 ** : Adapter code (Mount code)	1단 Single					2단 Double				
		L1	L2	L3	L4	L5	L1	L2	L3	L4	L5
SMS140□□□-19** ( 입력축 내경 ≤ φ 19 Input shaft bore ≤ φ 19 )	DA·DB·DC	/	/	/	/	/	291.5	179.5	□80	25	50
	DD	/	/	/	/	/	301.5	189.5	□80	35	60
	DE	/	/	/	/	/	296.5	184.5	□80	30	55
	EA	/	/	/	/	/	296.5	184.5	□90	30	55
	EB	/	/	/	/	/	291.5	179.5	□90	25	50
	EC	/	/	/	/	/	301.5	189.5	□90	35	60
	FA	/	/	/	/	/	291.5	179.5	□100	25	50
	FB	/	/	/	/	/	301.5	189.5	□100	35	60
	GA·GC	/	/	/	/	/	296.5	184.5	□115	30	55
	GB·GD	/	/	/	/	/	291.5	179.5	□115	25	50
	HA	/	/	/	/	/	291.5	179.5	□130	25	50
	HB	/	/	/	/	/	306.5	194.5	□130	40	65
HC·HD·HE	/	/	/	/	/	296.5	184.5	□130	30	55	
SMS140□□□-28** ( 입력축 내경 ≤ φ 28 Input shaft bore ≤ φ 28 )	FA·FB·FC	274	162	□100	35	67	308.5	196.5	□100	35	67
	GA·GB·GC·GD·GE·GF·GG	274	162	□115	35	67	308.5	196.5	□115	35	67
	HA·HC·HD	274	162	□130	35	67	308.5	196.5	□130	35	67
	HB	284	172	□130	45	77	318.5	206.5	□130	45	77
	JA·JB·JC	274	162	□150	35	67	308.5	196.5	□150	35	67
	KA·KB	274	162	□180	35	67	308.5	196.5	□180	35	67
	KD	284	172	□180	45	77	318.5	206.5	□180	45	77
	LA	274	162	□200	35	67	308.5	196.5	□200	35	67
MA	274	162	□220	35	67	308.5	196.5	□220	35	67	
SMS140□□□-38** ( 입력축 내경 ≤ φ 38 Input shaft bore ≤ φ 38 )	HA	289	177	□130	45	82	323.5	211.5	□130	45	82
	HB	284	172	□130	40	77	318.5	206.5	□130	40	77
	JA	289	177	□150	45	82	323.5	211.5	□150	45	82
	KA·KB·KC	289	177	□180	45	82	323.5	211.5	□180	45	82
	LA	289	177	□200	45	82	323.5	211.5	□200	45	82
	LB	299	187	□200	55	92	333.5	221.5	□200	55	92
	MA·MB	289	177	□220	45	82	323.5	211.5	□220	45	82
NA	289	177	□250	45	82	323.5	211.5	□250	45	82	
SMS140□□□-48** ( 입력축 내경 ≤ φ 48 Input shaft bore ≤ φ 48 )	KB·KC	310	198	□180	55	98	/	/	/	/	/
	KA	330	218	□180	75	118	/	/	/	/	/
	LA	310	198	□200	55	98	/	/	/	/	/
	MA	310	198	□220	55	98	/	/	/	/	/
	MB	330	218	□220	75	118	/	/	/	/	/
	NA	330	218	□250	75	118	/	/	/	/	/
	PA	330	218	□280	75	118	/	/	/	/	/

※ 1 1단 감속비: 1/3~1/10 ; 2단 감속비: 1/15~1/100

※ 1 Single reduction : 1/3 ~ 1/10, Double reduction : 1/15 ~ 1/100

※ 2 모터 축과 감속기의 입력축 내경이 다를 경우에는 부싱이 삽입됩니다.

※ 2 Bushing will be inserted to adapt to motor shaft.



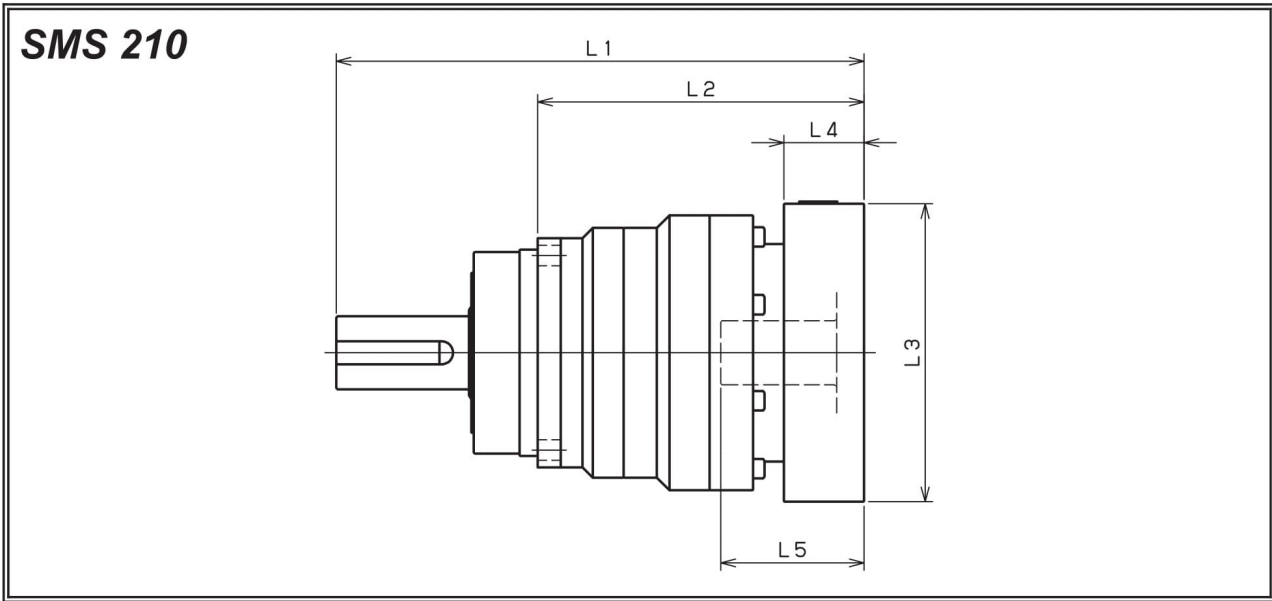
모델명 Model number	** : 어댑터 코드 ** : Adapter code (Mount code)	1단 Single					2단 Double				
		L1	L2	L3	L4	L5	L1	L2	L3	L4	L5
SMS180□□□-28** 입력축 내경 $\leq \phi 28$ Input shaft bore $\leq \phi 28$	FA·FB·FC						345	233	□100	35	67
	GA·GB·GC·GD·GE·GF·GG						345	233	□115	35	67
	HA·HC·HD						345	233	□130	35	67
	HB						355	243	□130	45	77
	JA·JB·JC						345	233	□150	35	67
	KA·KB						345	233	□180	35	67
	KD						355	243	□180	45	77
	LA						345	233	□200	35	67
	MA						345	233	□220	35	67
SMS180□□□-38** 입력축 내경 $\leq \phi 38$ Input shaft bore $\leq \phi 38$	HA	315.5	203.5	□130	45	82	360	248	□130	45	82
	HB	310.5	198.5	□130	40	77	355	243	□130	40	77
	JA	315.5	203.5	□150	45	82	360	248	□150	45	82
	KA·KB·KC	315.5	203.5	□180	45	82	360	248	□180	45	82
	LA	315.5	203.5	□200	45	82	360	248	□200	45	82
	LB	325.5	213.5	□200	55	92	370	258	□200	55	92
	MA·MB	315.5	203.5	□220	45	82	360	248	□220	45	82
	NA	315.5	203.5	□250	45	82	360	248	□250	45	82
SMS180□□□-48** 입력축 내경 $\leq \phi 48$ Input shaft bore $\leq \phi 48$	KB·KC	331.5	219.5	□180	55	98	376	264	□180	55	98
	KA	351.5	239.5	□180	75	118	396	284	□180	75	118
	LA	331.5	219.5	□200	55	98	376	264	□200	55	98
	MA	331.5	219.5	□220	55	98	376	264	□220	55	98
	MB	351.5	239.5	□220	75	118	396	284	□220	75	118
	NA	351.5	239.5	□250	75	118	396	284	□250	75	118
	PA	351.5	239.5	□280	75	118	396	284	□280	75	118
SMS180□□□-65** 입력축 내경 $\leq \phi 65$ Input shaft bore $\leq \phi 65$	MA·MB·MC·MD	363	251	□220	80	122					
	NA	363	251	□250	80	122					
	PA	383	271	□280	100	142					
	PB	393	281	□280	110	152					
	QA	383	271	□320	100	142					

※ 1 단 감속비: 1/3~1/10 ; 2단 감속비: 1/15~1/100

※ 2 모터 축과 감속기의 입력축 내경이 다를 경우에는 부싱이 삽입됩니다.

※ 1 Single reduction : 1/3 ~ 1/10, Double reduction : 1/15 ~ 1/100

※ 2 Bushing will be inserted to adapt to motor shaft.



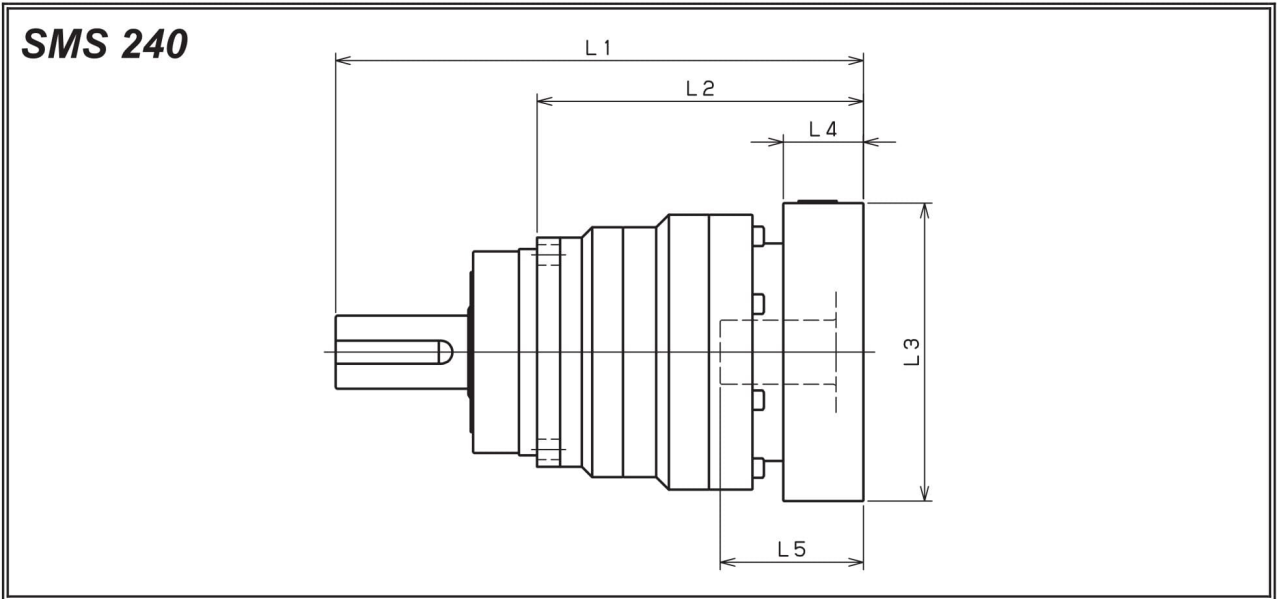
모델명 Model number	** : 어댑터 코드 ** : Adapter code (Mount code)	1단 Single					2단 Double				
		L1	L2	L3	L4	L5	L1	L2	L3	L4	L5
SMS210□□□-38** ( 입력축 내경 ≤ φ 38 Input shaft bore )	HA						413	270	□130	45	82
	HB						408	265	□130	40	77
	JA						413	270	□150	45	82
	KA·KB·KC						413	270	□180	45	82
	LA						413	270	□200	45	82
	LB						423	280	□200	55	92
	MA·MB						413	270	□220	45	82
	NA						413	270	□250	45	82
SMS210□□□-48** ( 입력축 내경 ≤ φ 48 Input shaft bore )	KB·KC	394	251	□180	55	98	429	286	□180	55	98
	KA	414	271	□180	75	118	449	306	□180	75	118
	LA	394	251	□200	55	98	429	286	□200	55	98
	MA	394	251	□220	55	98	429	286	□220	55	98
	MB	414	271	□220	75	118	449	306	□220	75	118
	NA	414	271	□250	75	118	449	306	□250	75	118
	PA	414	271	□280	75	118	449	306	□280	75	118
SMS210□□□-65** ( 입력축 내경 ≤ φ 65 Input shaft bore )	MA·MB·MC·MD	418	275	□220	80	122					
	NA	418	275	□250	80	122					
	PA	438	295	□280	100	142					
	PB	448	305	□280	110	152					
	QA	438	295	□320	100	142					

※ 1 단 감속비: 1/3~1/10 ; 2단 감속비: 1/15~1/100

※ 2 모터 축과 감속기의 입력축 내경이 다를 경우에는 부싱이 삽입됩니다.

※ 1 Single reduction : 1/3 ~ 1/10, Double reduction : 1/15 ~ 1/100

※ 2 Bushing will be inserted to adapt to motor shaft.



모델명 Model number	** : 어댑터 코드 ** : Adapter code (Mount code)	1단 Single					2단 Double				
		L1	L2	L3	L4	L5	L1	L2	L3	L4	L5
SMS240□□□-48** ( 입력축 내경 ≤ φ 48 Input shaft bore ≤ φ 48 )	KB·KC						496	326	□180	55	98
	KA						516	346	□180	75	118
	LA						496	326	□200	55	98
	MA						496	326	□220	55	98
	MB						516	346	□220	75	118
	NA						516	346	□250	75	118
	PA						516	346	□280	75	118
SMS240□□□-65** ( 입력축 내경 ≤ φ 65 Input shaft bore ≤ φ 65 )	MA·MB·MC·MD	465.5	295.5	□220	80	122					
	NA	465.5	295.5	□250	80	122					
	PA	485.5	315.5	□280	100	142					
	PB	495.5	325.5	□280	110	152					
	QA	485.5	315.5	□320	100	142					

※ 1 1단 감속비: 1/3~1/10 ; 2단 감속비: 1/15~1/100

※ 2 모터 축과 감속기의 입력축 내경이 다를 경우에는 부싱이 삽입됩니다.

※ 1 Single reduction : 1/3 ~ 1/10, Double reduction : 1/15 ~ 1/100

※ 2 Bushing will be inserted to adapt to motor shaft.