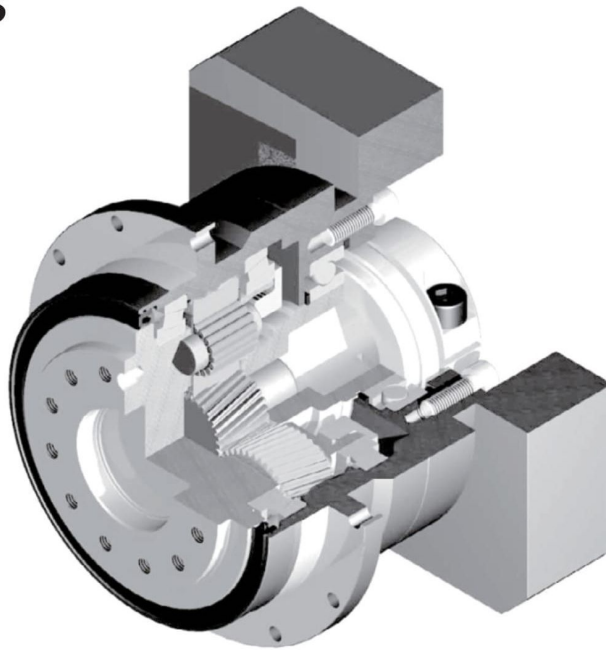


SMT series



고정밀

표준 백래시 ≤ 3 arc-min.

High precision

Standard backlash is 3 arc-min, ideal for precision control.

고강성 & 고토크

Uncaged 니들롤러베어링을 사용하여 강성과 토크 향상.

High rigidity & torque

High rigidity & high torque were achieved by uncaged needle roller bearings.

고하중

출력단에 테이퍼롤러 베어링을 사용하여 반경방향 및 축방향 하중을 증가.

※ (프레임사이즈 064-090 제품은 볼베어링).

High load capacity

Adopting taper roller bearing for the main output shaft to increase radial and axial load.

※ Frame size 064 · 090 adopt ball bearing.

어댑터-부싱 연결방식

다양한 모터에 취부 가능.

Adapter-bushing connection

Can be attached to any motor all over the world.

그리스 누유현상 없음

고점도 분리방지 그리스를 사용.

No grease leakage

Perfect solution using high viscosity anti-separation grease.

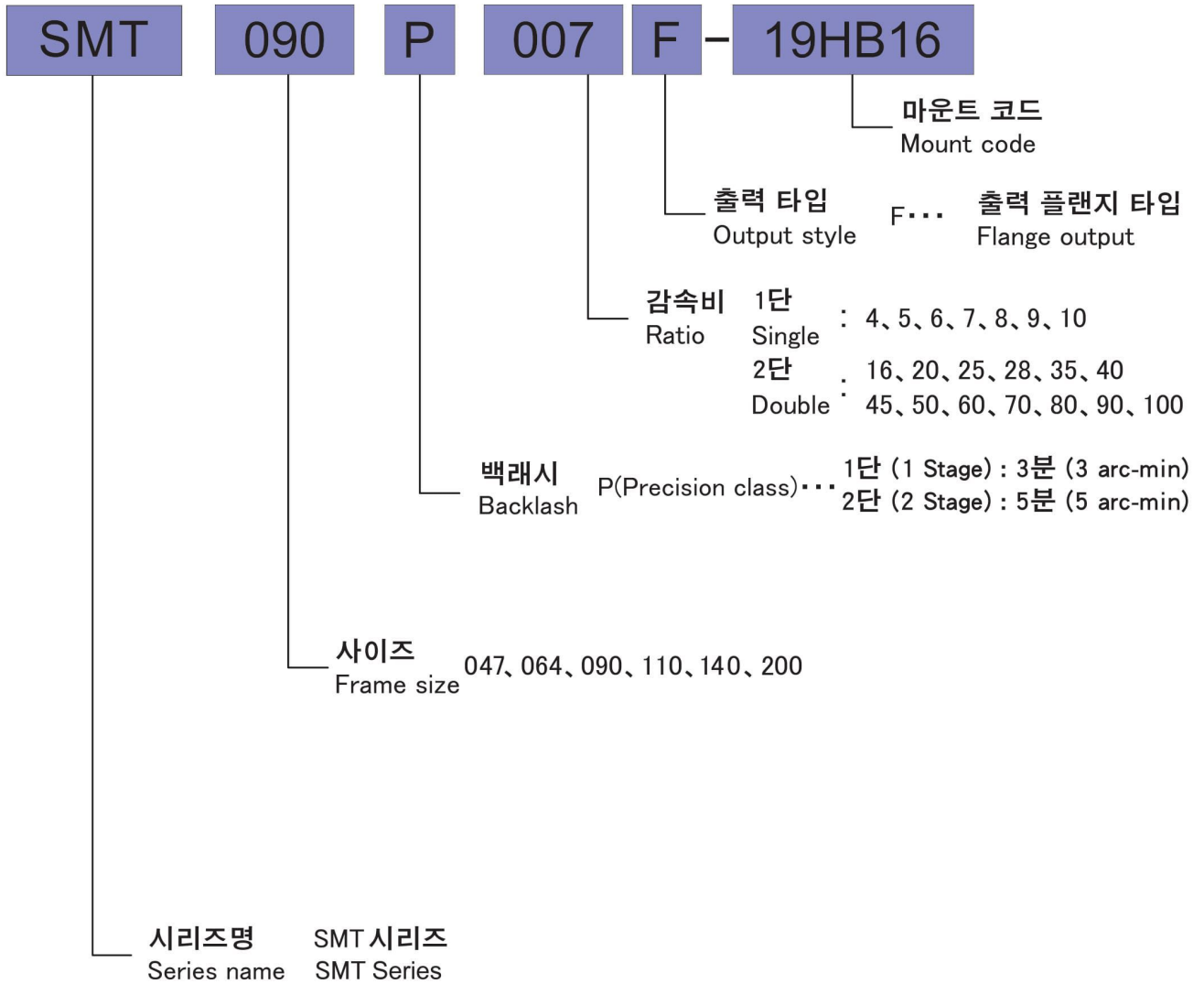
유지 보수 불필요

제품 수명 동안 그리스 교체 불필요 자유로운 설치 가능.

Maintenance-free

No need to replace the grease for the life of the unit.
Can be attached in any position.

SMT series



Model No.		Unit	Stage	Ratio ¹	SMT047	SMT064	SMT090	SMT110	SMT140	SMT200
Rated Output Torque (Nominal Output torque)	T _{2N}	Nm	1	4	16	39	110	210	460	950
				5	19	43	110	210	580	1,200
				6	15	43	108	160	530	1,100
				7	15	43	108	200	490	1,000
				8	15	43	79	190	420	900
				9	15	35	90	170	390	800
			2	10	15	30	88	170	370	800
				16	16	39	100	210	460	950
				20	16	39	100	210	460	950
				25	19	43	110	210	580	1,200
				28	18	43	108	200	580	1,200
				35	18	43	108	200	580	1,200
				40	19	43	110	210	460	1,200
				45	17	39	90	170	580	1,200
				50	19	43	110	210	580	1,200
				60	18	43	108	160	580	1,200
				70	18	43	108	200	490	1,100
				80	17	43	79	190	420	900
				90	17	39	90	170	390	800
100	17	39	88	170	370	800				
Max. Acceleration Torque	T _{2B}	Nm	1,2	4~100	1.8 Times of Rated Output Torque					
Max. Output Torque Emergency Stop Torque	T _{2NOT}	Nm	1,2	4~100	3 Times of Rated Output Torque					
Nominal Input speed	n _{1n}	rpm	1,2	4~100	3,000	3,000	3,000	3,000	2,000	1,500
Max. Input speed	n _{1B}	rpm	1,2	4~100	6,000	6,000	6,000	6,000	5,000	4,000
Backlash (Precision class)		arcmin	1	4~10	≤3	≤3	≤3	≤3	≤3	≤3
			2	16~100	≤5	≤5	≤5	≤5	≤5	≤5
Torsional Rigidity		Nm/arcmin	1,2	4~100	2	5	12	23	38	110
Max. Radial load ²	F _{2rB}	N	1,2	4~100	745	900	1,750	7,300	14,000	22,000
Max. Axial load ²	F _{2aB}	N	1,2	4~100	745	900	1,750	4,300	10,000	15,000
Service life	L _H	hr	1,2	4~100	20,000	20,000	20,000	20,000	20,000	20,000
Noise level ³		dB(A)	1,2	4~100	≤ 56	≤ 58	≤ 60	≤ 63	≤ 65	≤ 67
Weight		kg	1	4~10	0.7	1.4	3.6	7	15	42
			2	16~100	0.8	1.6	4	7.7	17	43
Mass Moments of Inertia ⁴		kg cm ²	1	4~10	0.04	0.18	1.0	3.9	16	61
			2	16~100	0.03	0.13	0.72	2.8	12	38
Operating Temp. ⁵		°C	1,2	4~100	-10 ~ +90					
Lubrication			1,2	4~100	High temperature & Extreme pressure Lubricant					
Mounting position			1,2	4~100	All directions					
Efficiency	η	%	1	4~10	≥ 95					
			2	16~100	≥ 92					
Degree of protection			1,2	4~100	IP 65					

(1) Ratio (감속비) = N_{in} / N_{out}

(2) 기준 : 출력회전수 100rpm, 출력축 중앙 부하, 부하계수(Ka)=1, 연속운전 10,000시간

These values are based on the following conditions : 100 rpm at the output. Load applied to the middle of the output shaft. Load coefficient(Ka)=1. Continuous operation(S1≒10,000hrs).

(3) 입력 회전수 3000 rpm, 무부하 운전상태에서 감속기 취부면에서 1m 떨어진 거리에서 측정 (모델에 따라 차이가 있을수 있습니다)

Noise level : A measurement 1m away from the reducer (with ratio10 or ratio 100), 3000 input rpm and at no load condition. (Background noise 40dB(A)) With lower ratio and/or higher rpm, the noise level could be 3 to 5 dB higher.

(4) 관성모멘트 : 감속비 중 대표값 (i=1/5)

Moment of inertia : A measurement at the input shaft and representatives from each ratio.(i=1/5)

(5) 감속기 작동온도 : -10~+90 °C, 감속기 주위온도 -10~40°C

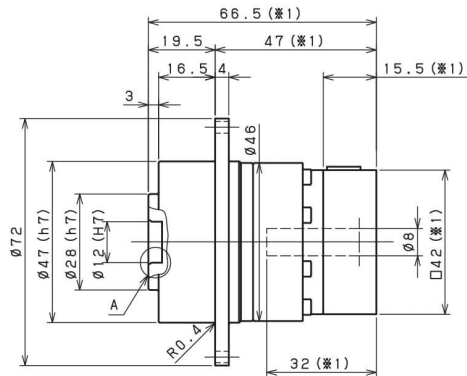
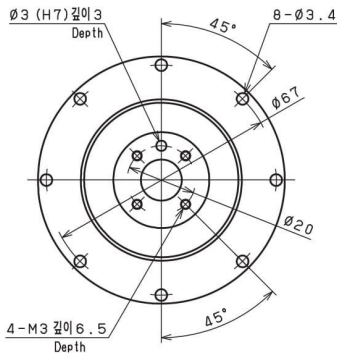
Operating temperature : Surface temperature of gear case in -10 °C~40 °C of ambient temperature.

※ 제품 성능 향상을 위해 사양은 별도의 고지 없이 변경될 수 있습니다.

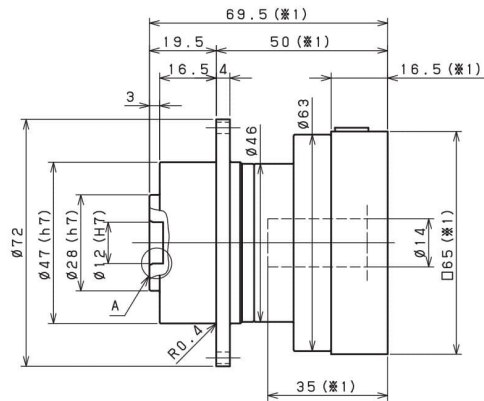
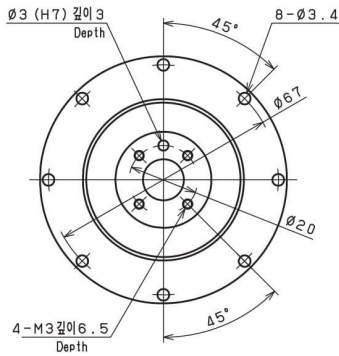
Specifications are subject to change without notice to improve product performances.

SMT 047 1단 1stage

입력축 내경 Input shaft bore $\leq \phi 8$

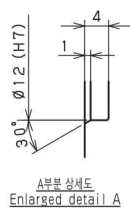
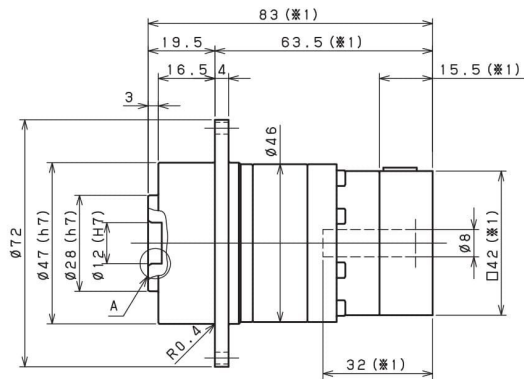
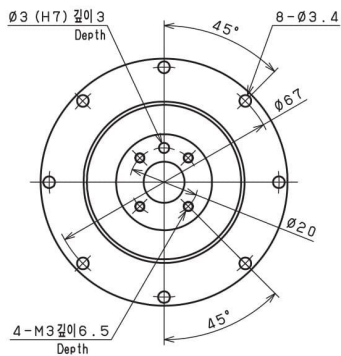


입력축 내경 Input shaft bore $\leq \phi 14$



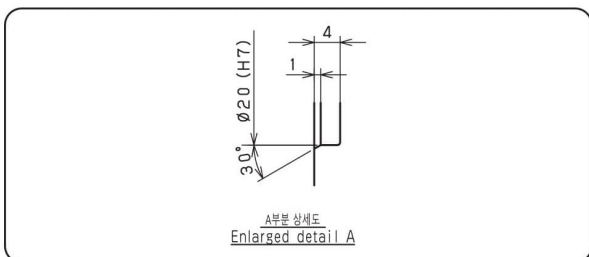
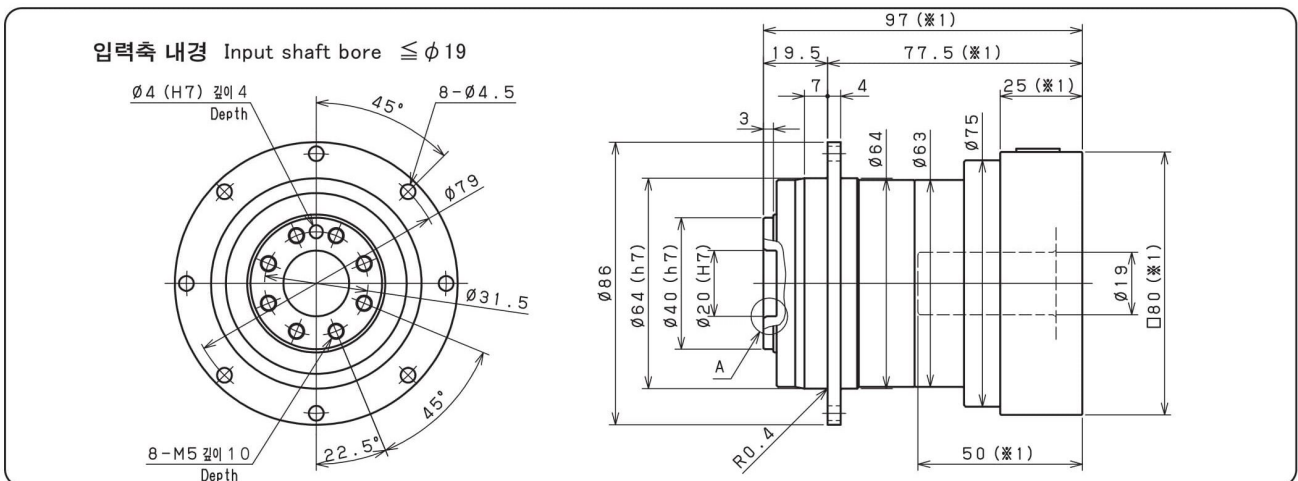
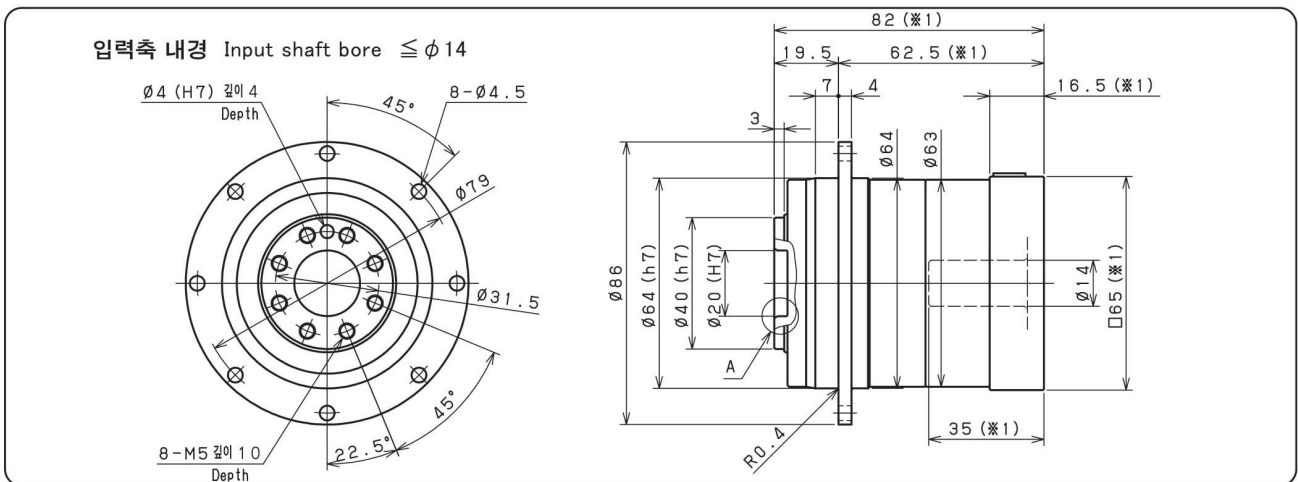
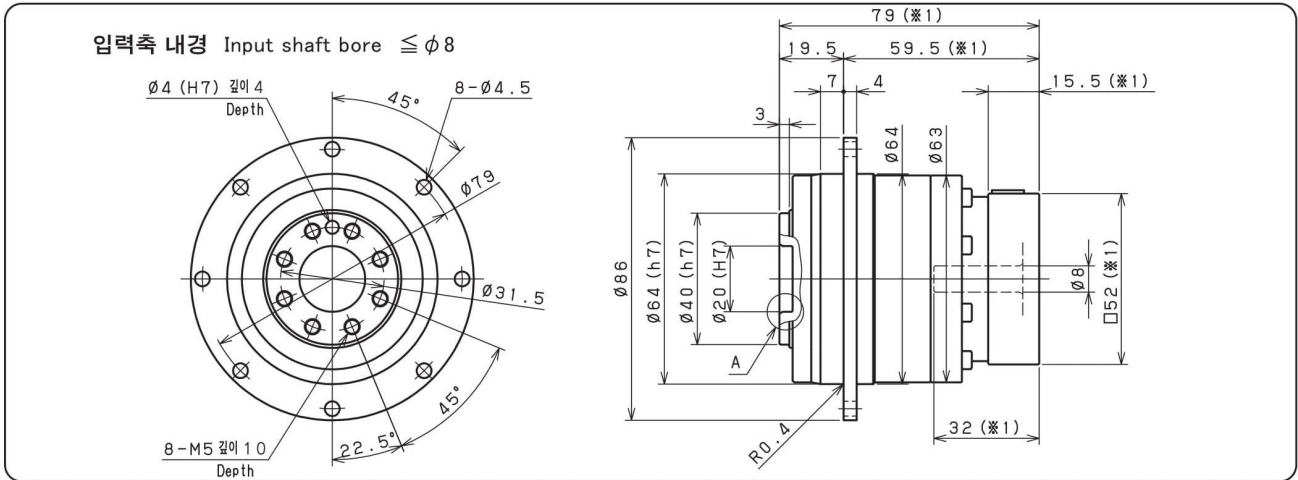
SMT 047 2단 2stage

입력축 내경 Input shaft bore $\leq \phi 8$



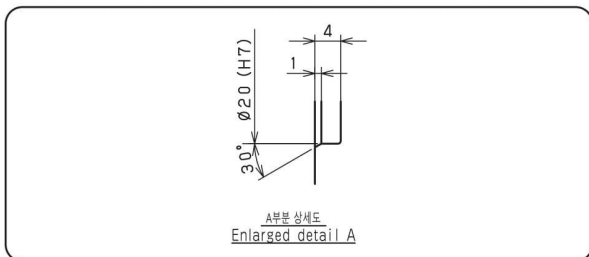
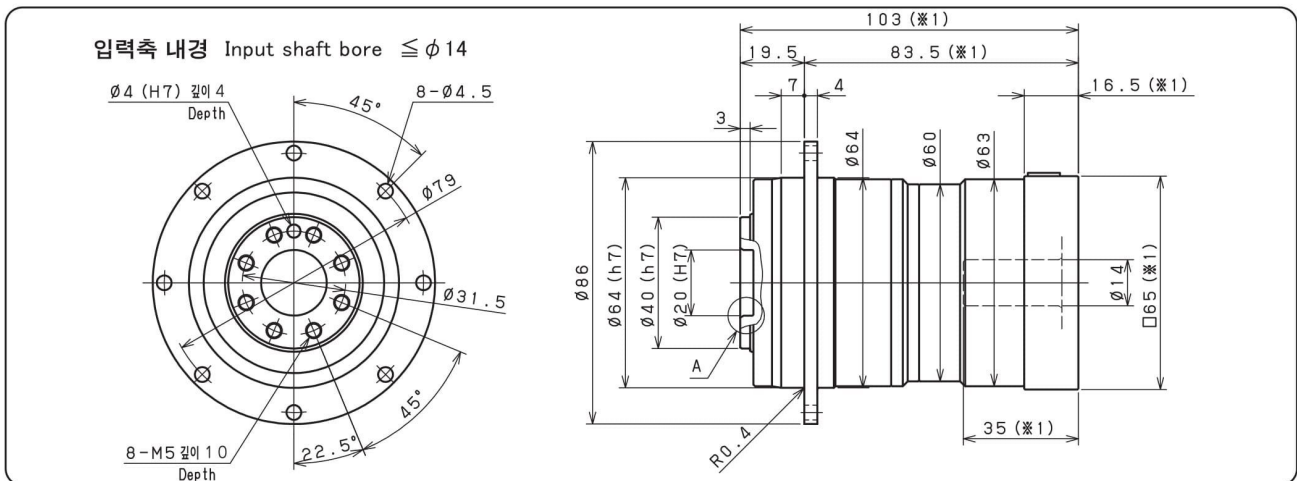
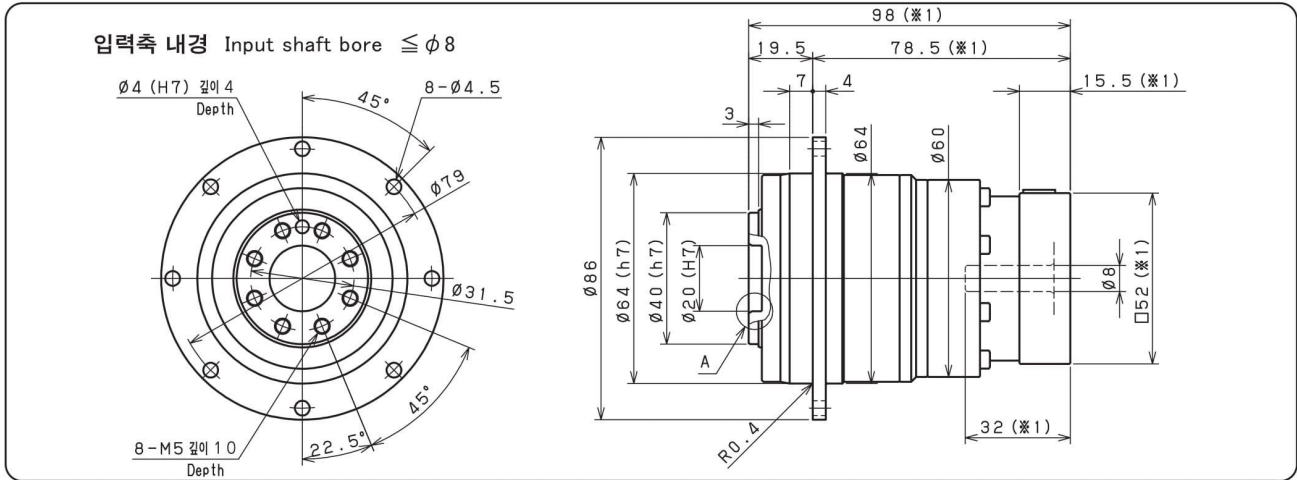
- ※1 적용 모터에 따라 길이는 변경될 수 있습니다.
- ※2 모터 축과 감속기의 입력축 내경이 다를 경우에는 부싱이 삽입됩니다.
- ※1 Length will vary depending on motor.
- ※2 Bushing will be inserted to adapt to motor shaft.

SMT 064 1단 1stage



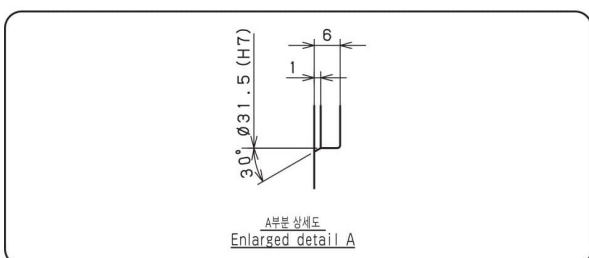
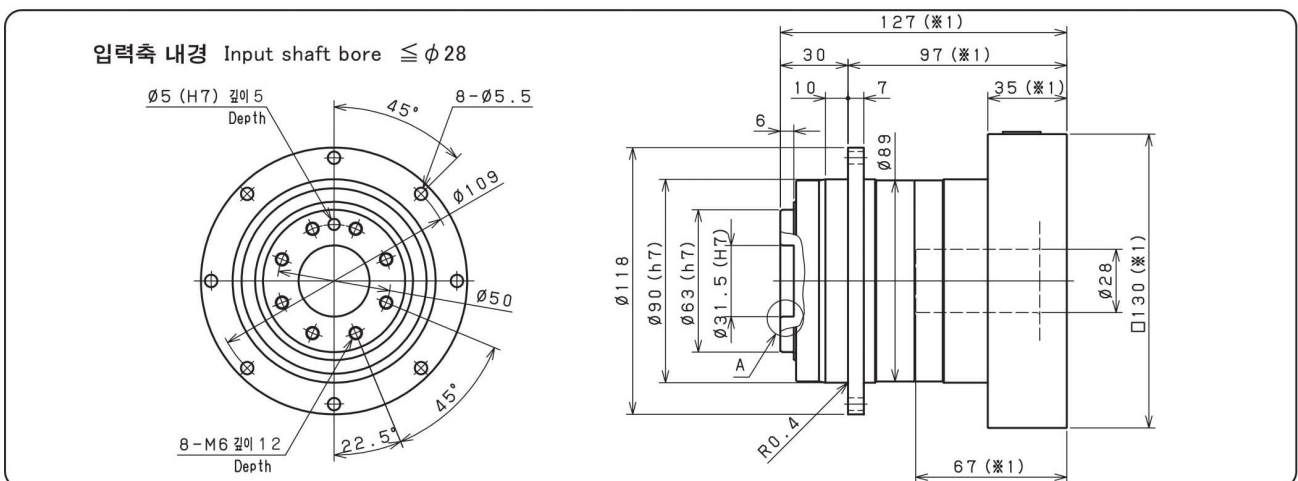
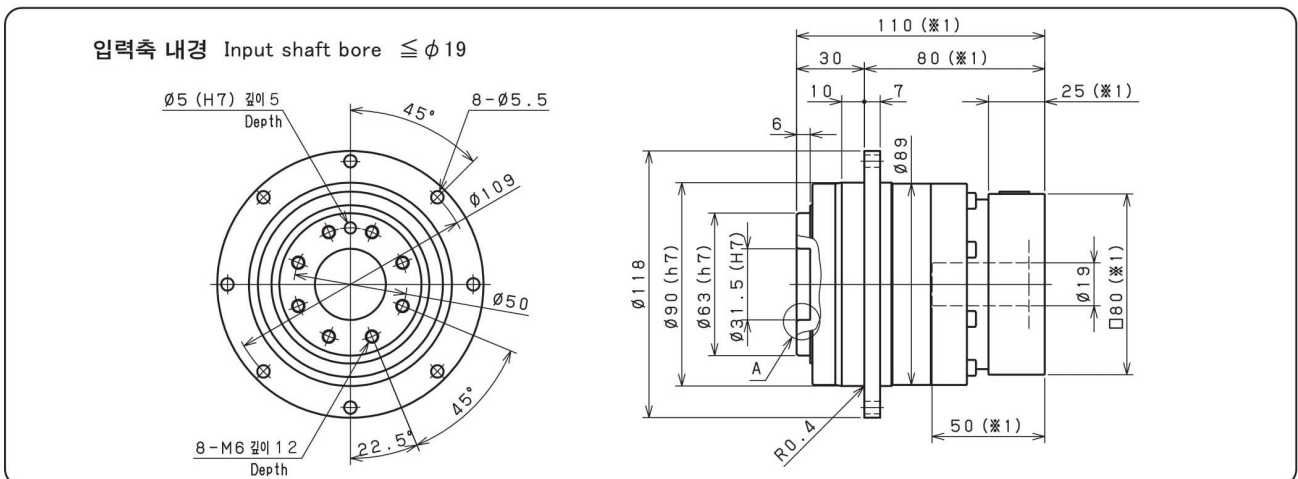
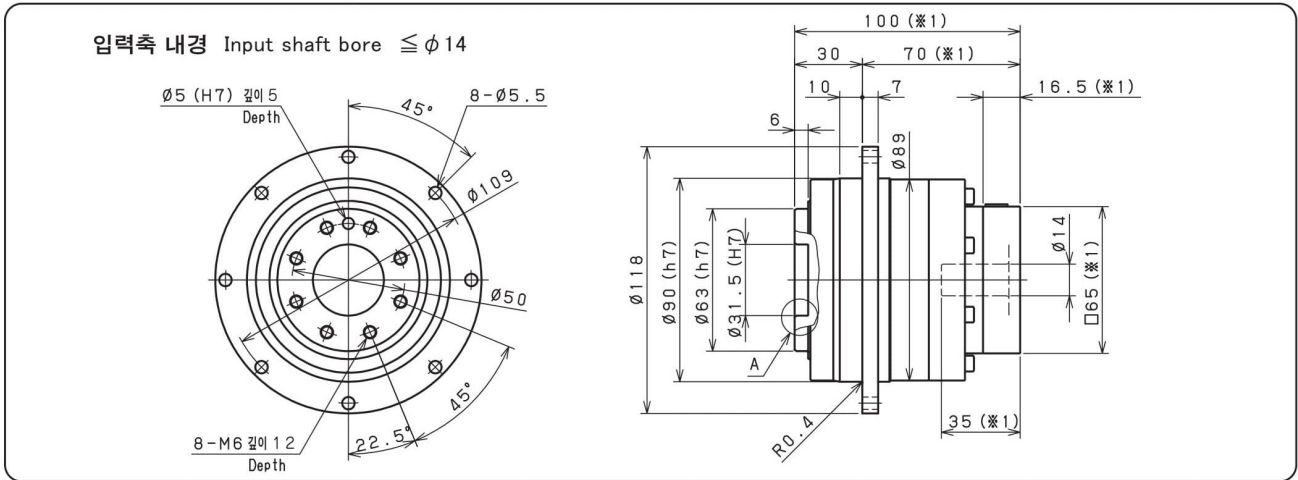
- ※1 적용 모터에 따라 길이는 변경될 수 있습니다.
- ※2 모터 축과 감속기의 입력축 내경이 다를 경우에는 부싱이 삽입됩니다.
- ※1 Length will vary depending on motor.
- ※2 Bushing will be inserted to adapt to motor shaft.

SMT 064 2단 2stage



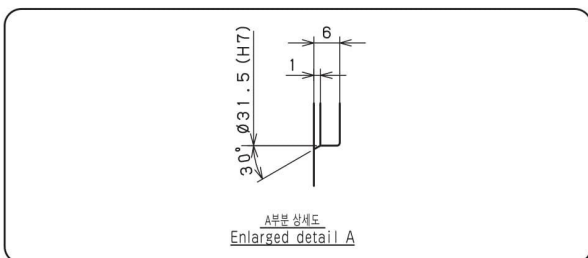
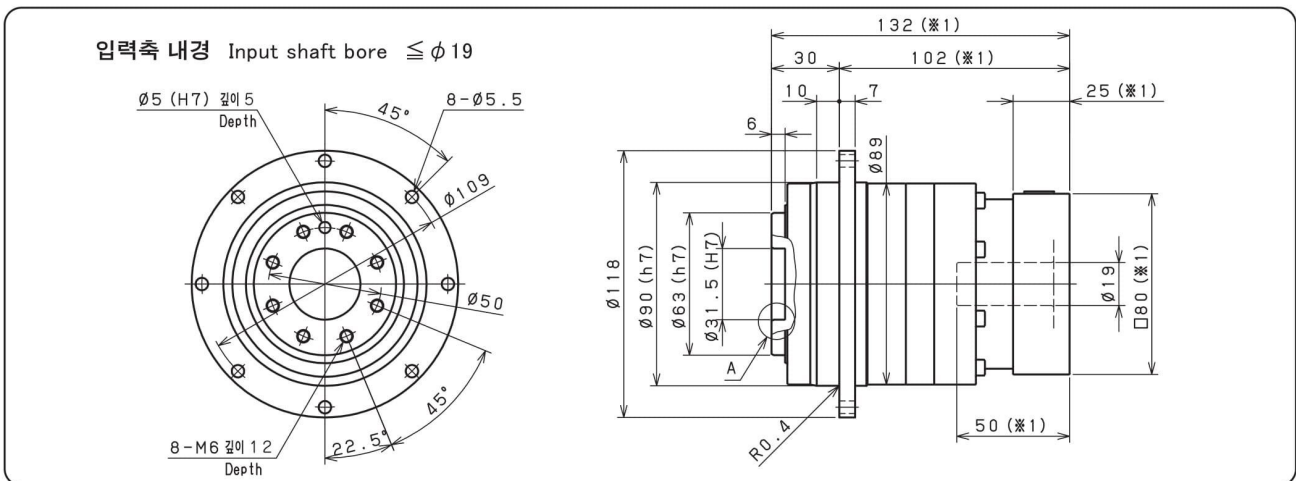
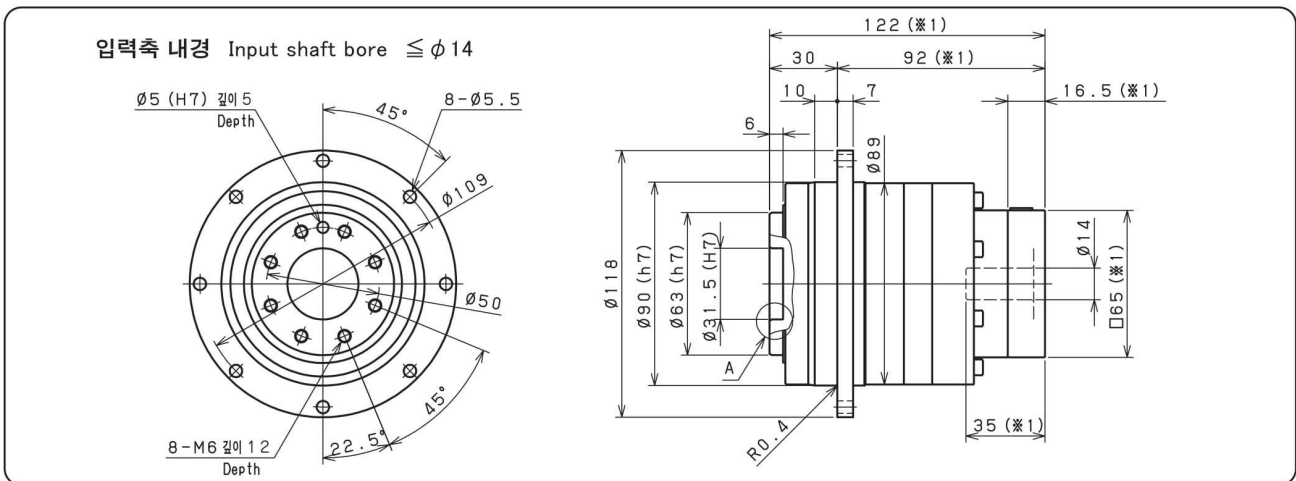
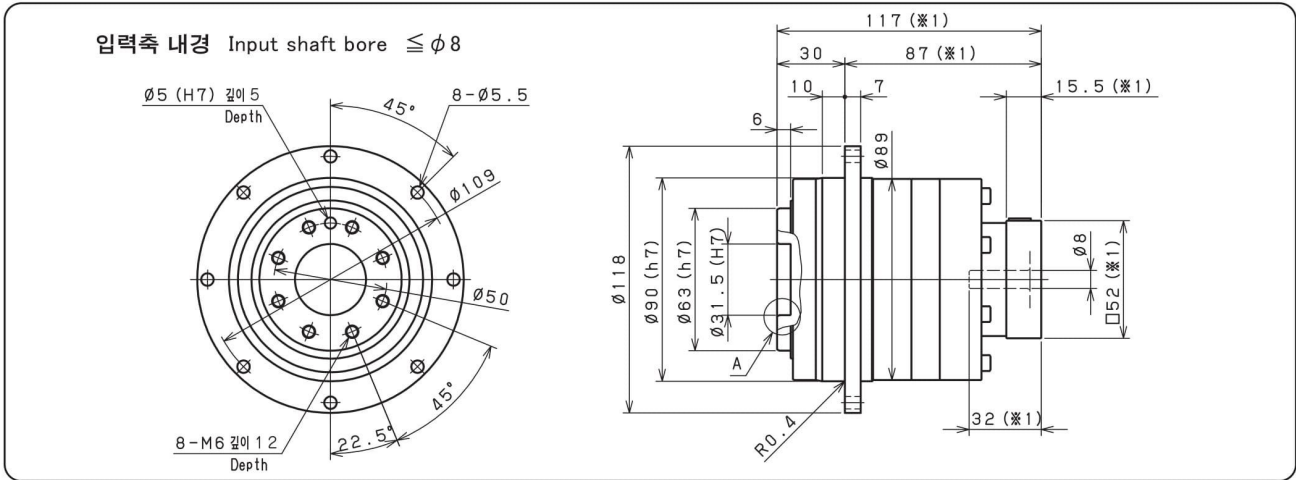
- ※1 적용 모터에 따라 길이는 변경될 수 있습니다.
- ※2 모터 축과 감속기의 입력축 내경이 다를 경우에는 부싱이 삽입됩니다.
- ※1 Length will vary depending on motor.
- ※2 Bushing will be inserted to adapt to motor shaft.

SMT 090 1단 1stage



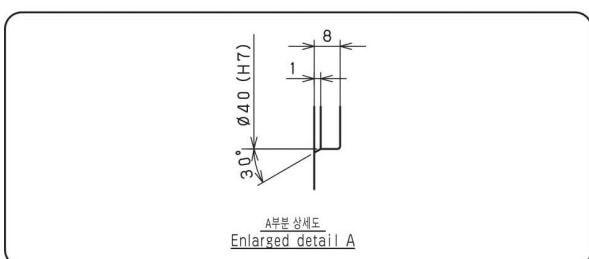
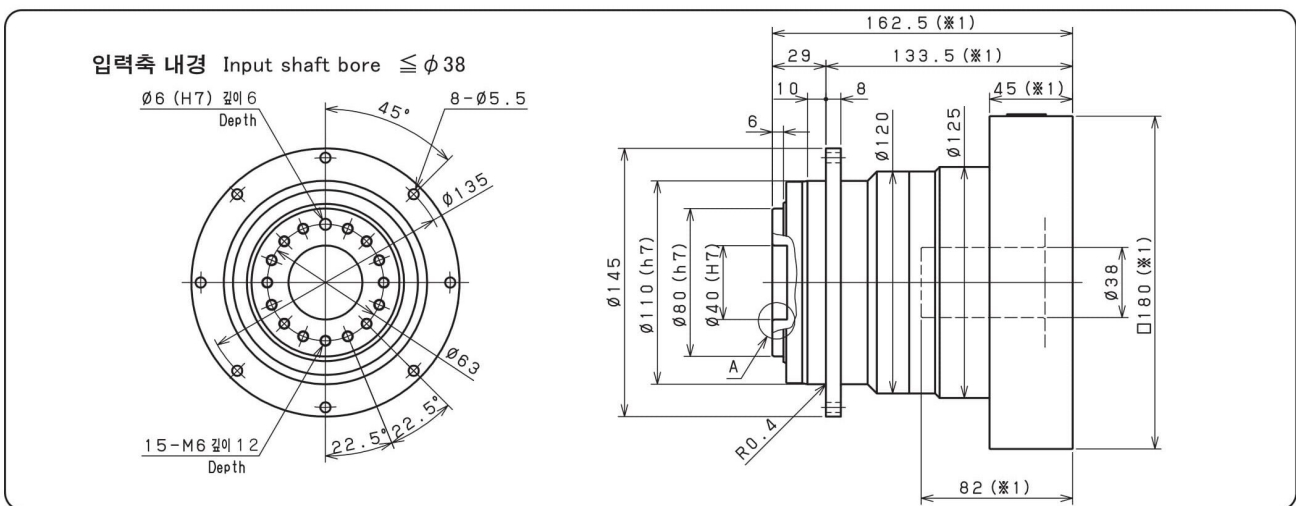
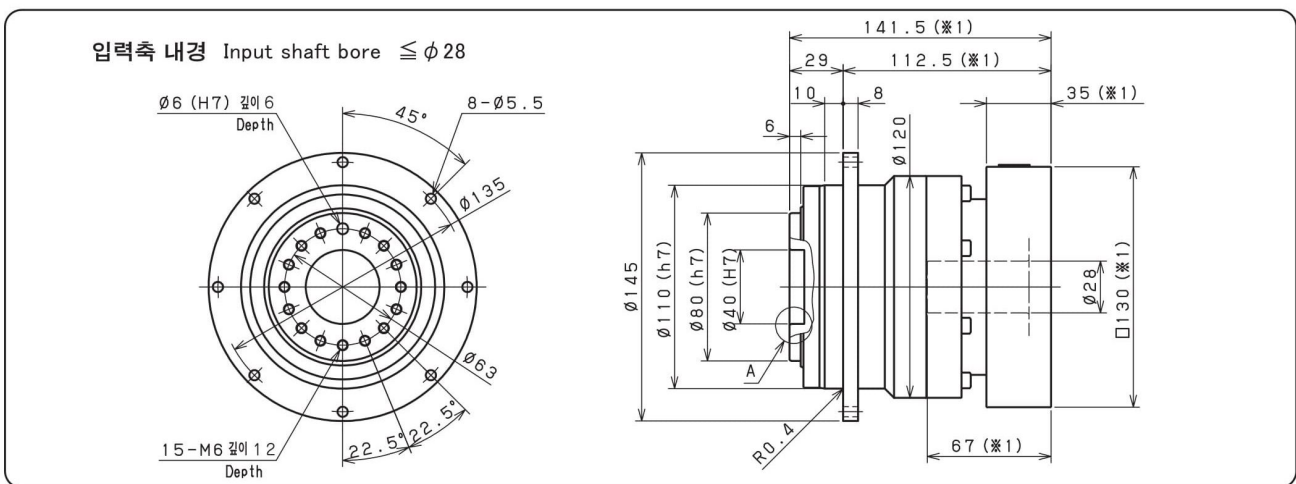
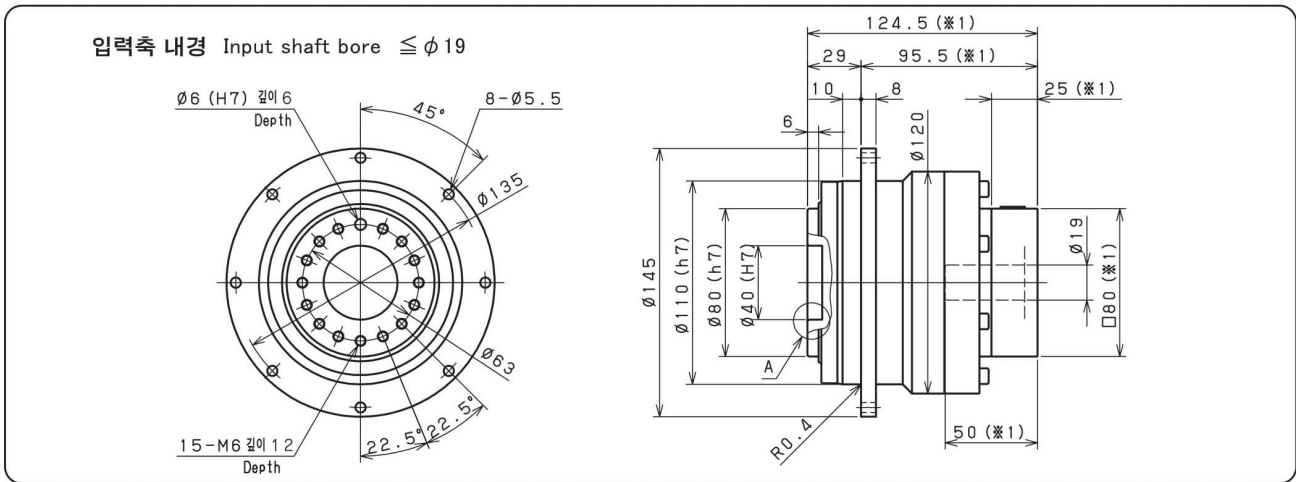
- ※1 적용 모터에 따라 길이는 변경될 수 있습니다.
- ※2 모터 축과 감속기의 입력축 내경이 다를 경우에는 부싱이 삽입됩니다.
- ※1 Length will vary depending on motor.
- ※2 Bushing will be inserted to adapt to motor shaft.

SMT 090 2단 2stage



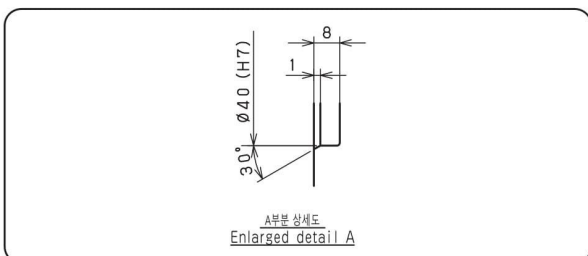
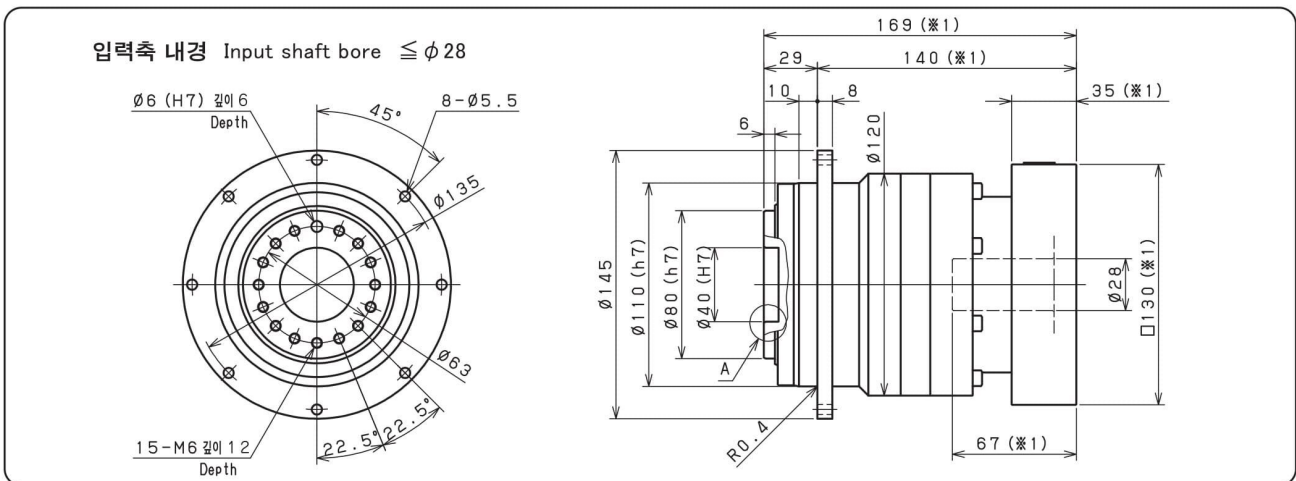
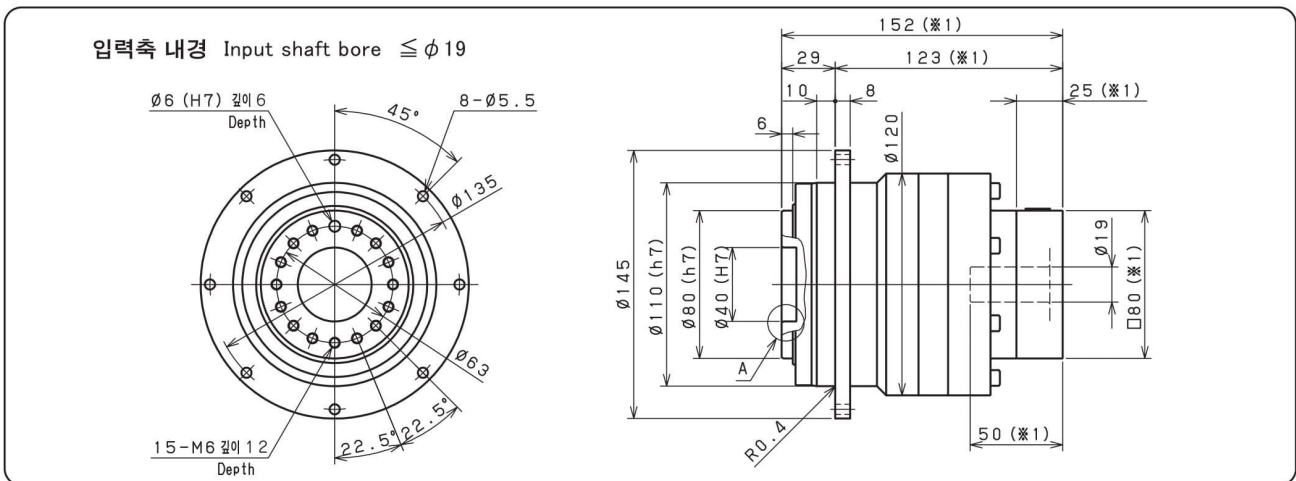
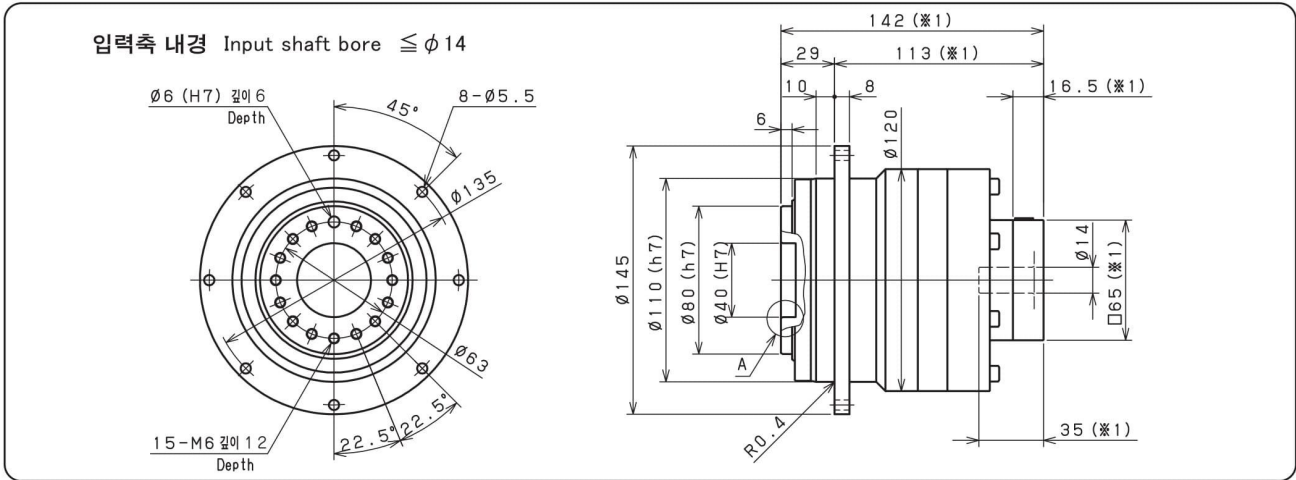
- ※1 적용 모터에 따라 길이는 변경될 수 있습니다.
- ※2 모터 축과 감속기의 입력축 내경이 다를 경우에는 부싱이 삽입됩니다.
- ※1 Length will vary depending on motor.
- ※2 Bushing will be inserted to adapt to motor shaft.

SMT 110 1단 1stage



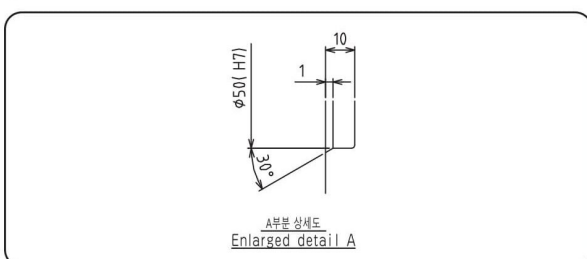
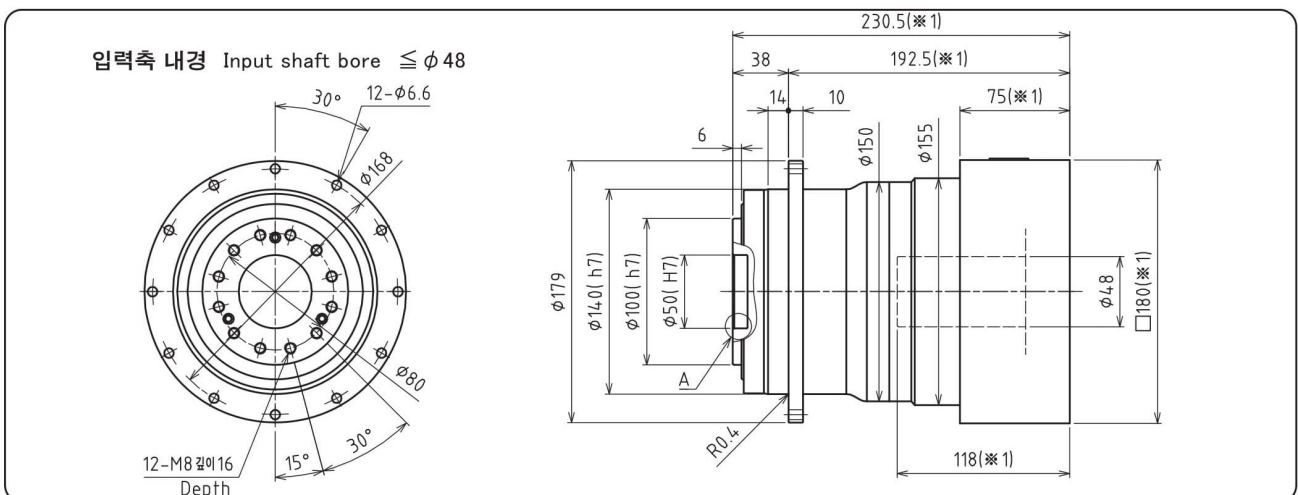
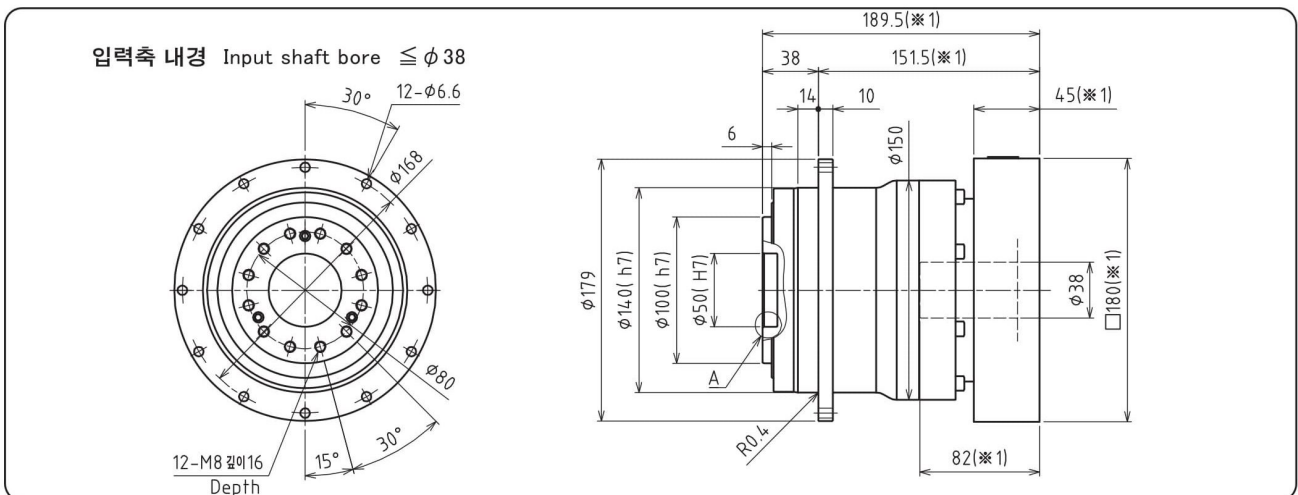
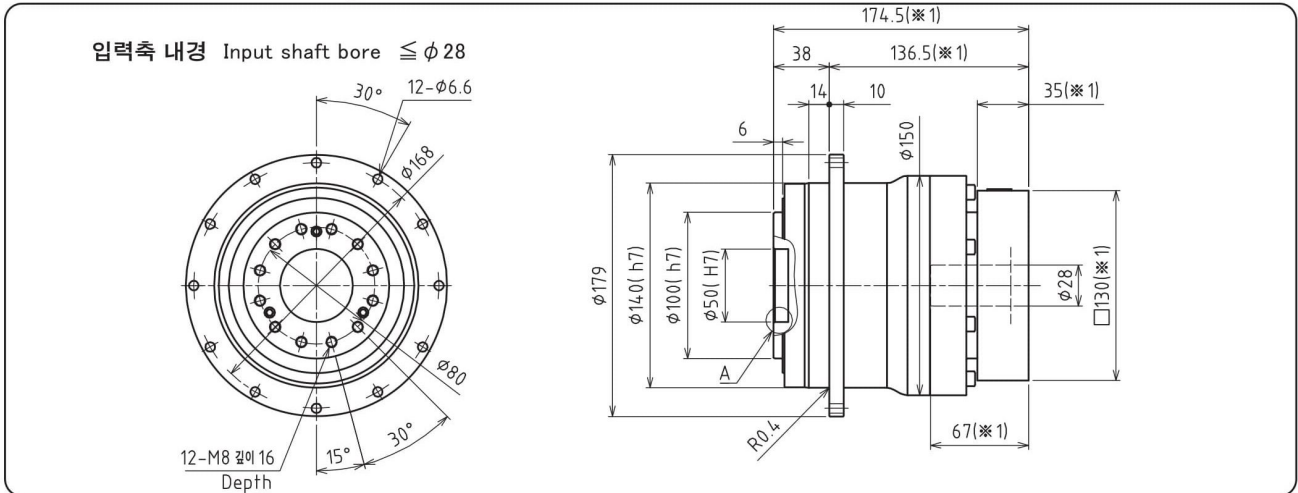
- ※1 적용 모터에 따라 길이는 변경될 수 있습니다.
- ※2 모터 축과 감속기의 입력축 내경이 다를 경우에는 부싱이 삽입됩니다.
- ※1 Length will vary depending on motor.
- ※2 Bushing will be inserted to adapt to motor shaft.

SMT 110 2단 2stage



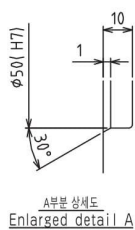
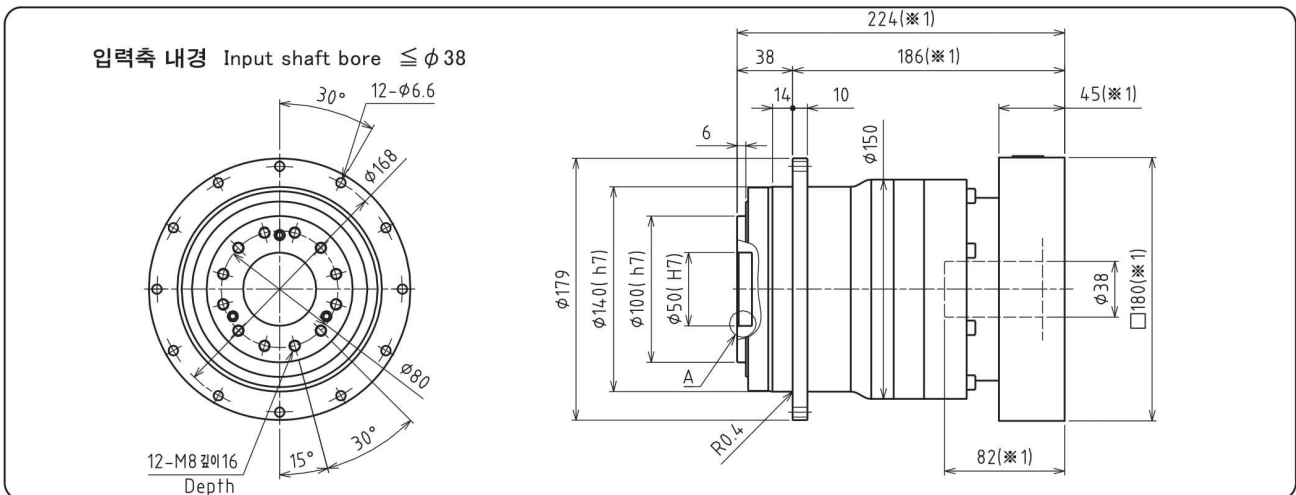
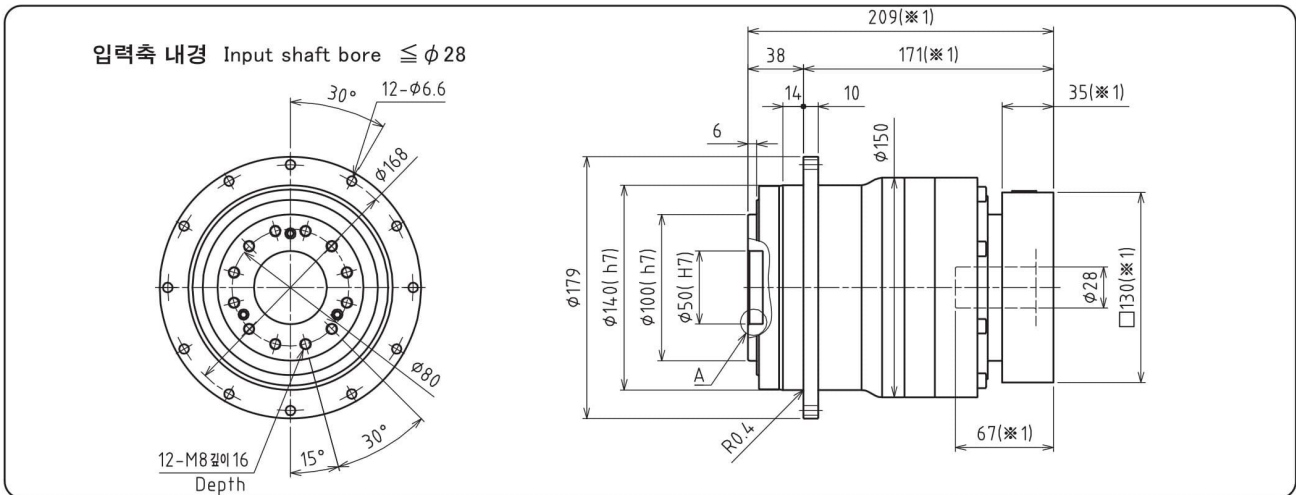
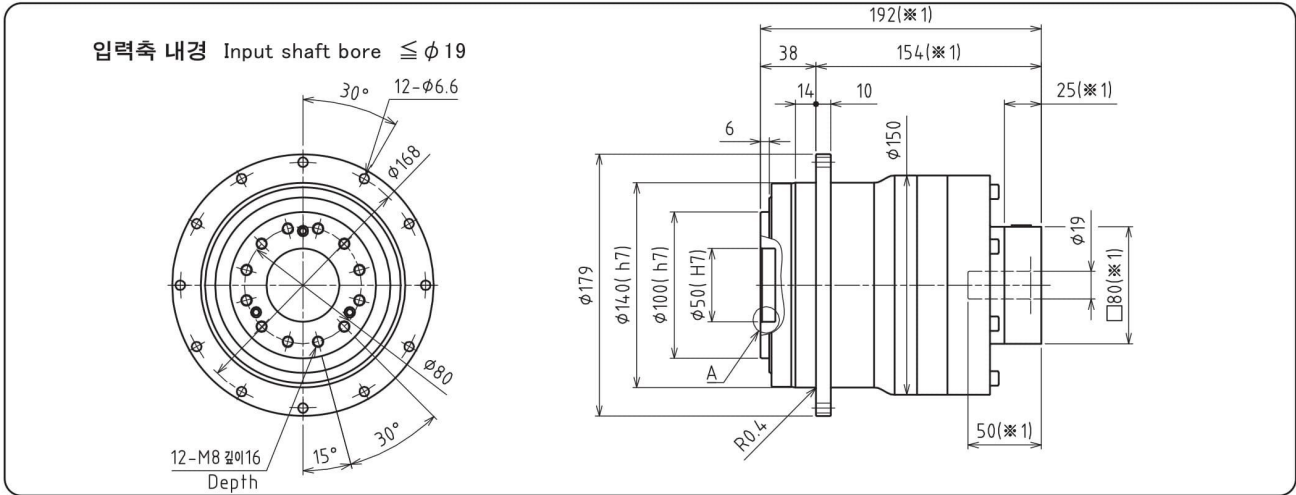
- ※1 적용 모터에 따라 길이는 변경될 수 있습니다.
- ※2 모터 축과 감속기의 입력축 내경이 다를 경우에는 부싱이 삽입됩니다.
- ※1 Length will vary depending on motor.
- ※2 Bushing will be inserted to adapt to motor shaft.

SMT 140 1단 1stage



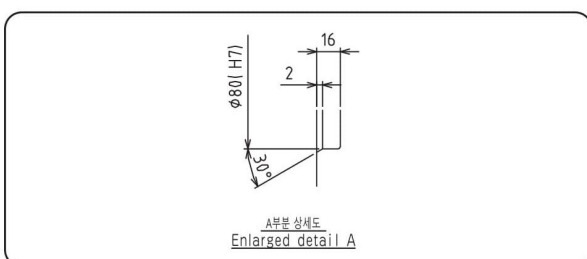
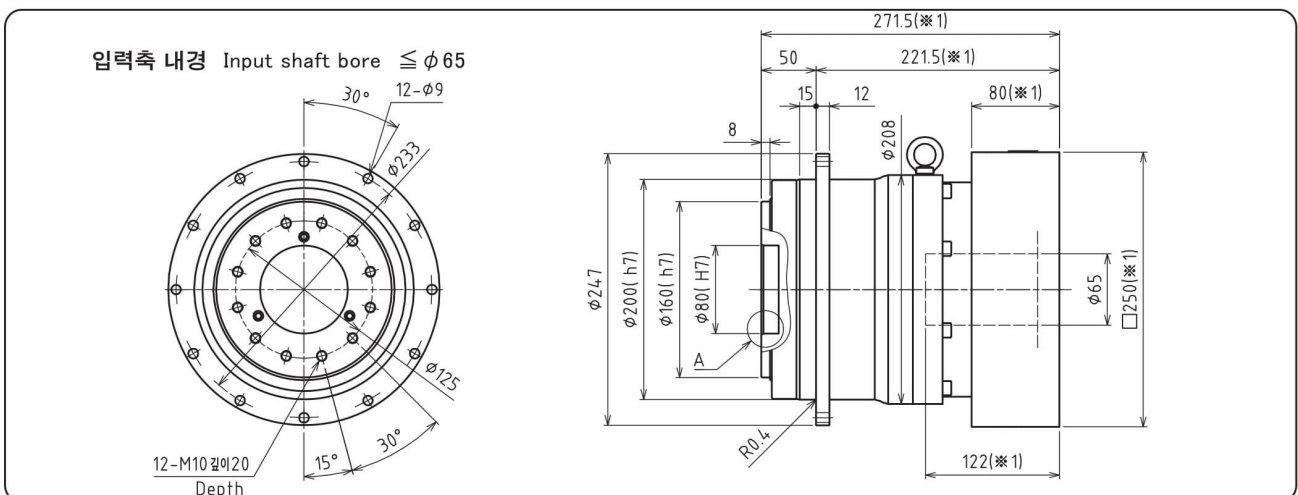
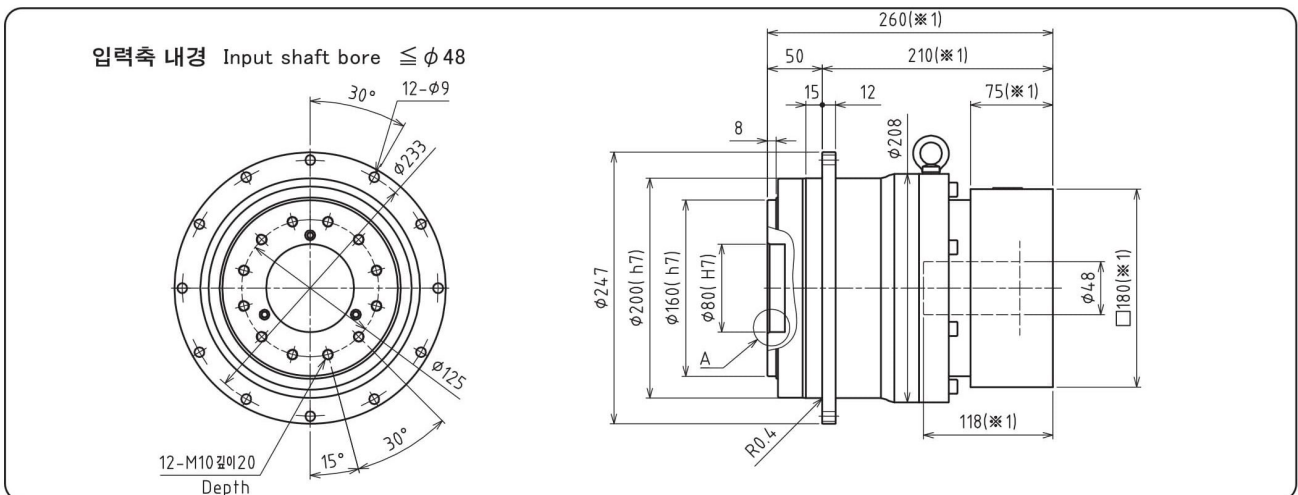
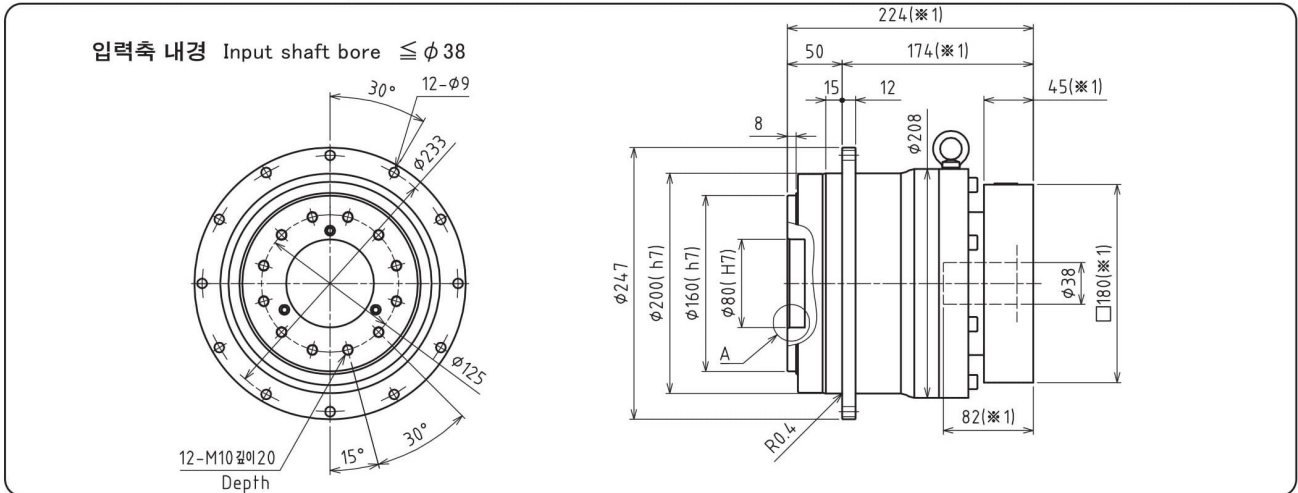
- ※1 적용 모터에 따라 길이는 변경될 수 있습니다.
- ※2 모터 축과 감속기의 입력축 내경이 다를 경우에는 부싱이 삽입됩니다.
- ※1 Length will vary depending on motor.
- ※2 Bushing will be inserted to adapt to motor shaft.

SMT 140 2단 2stage



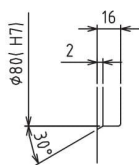
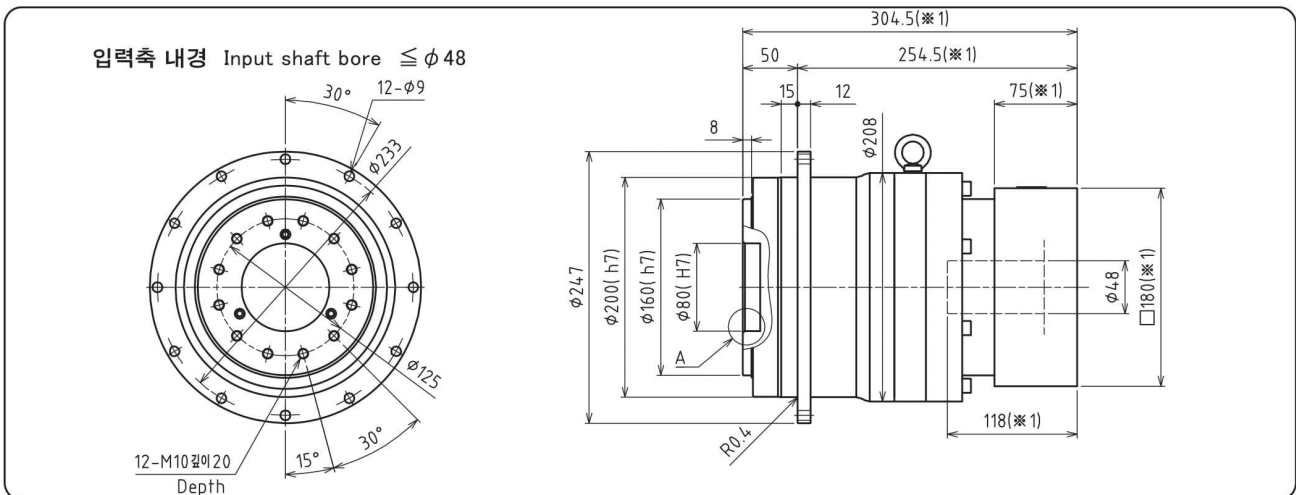
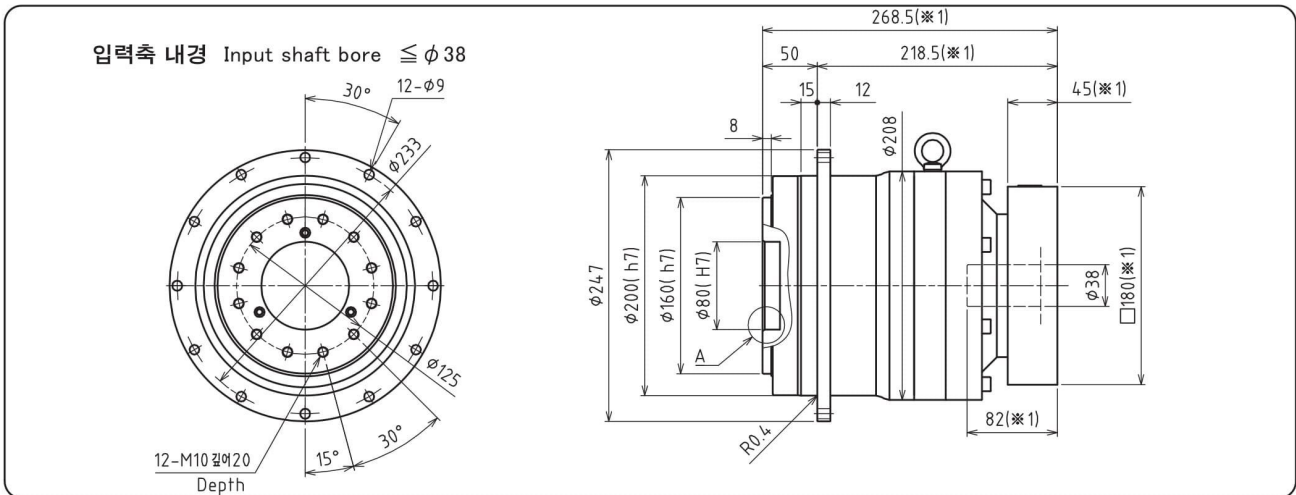
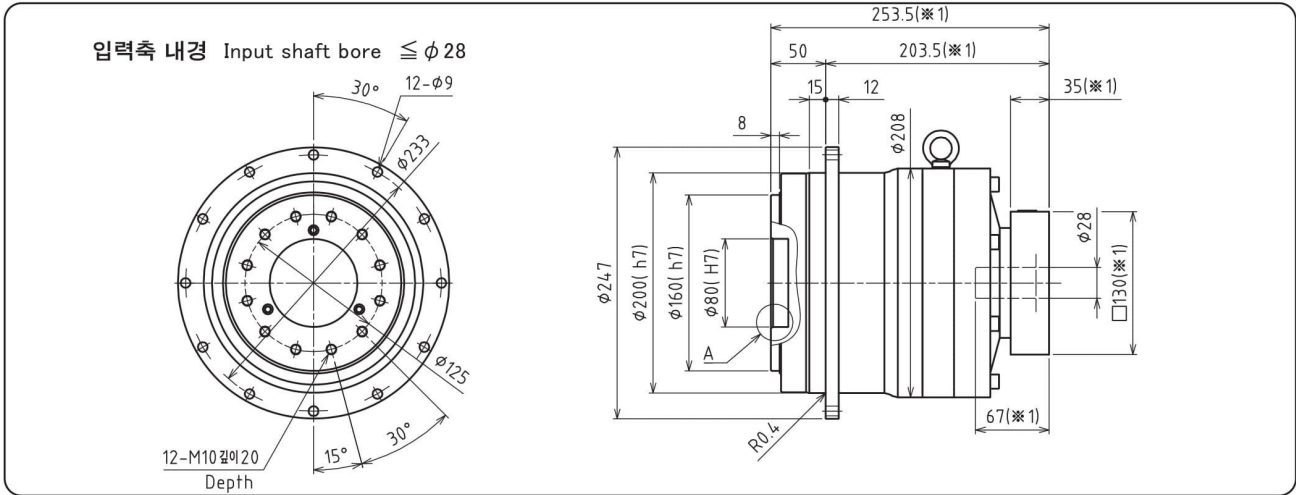
- ※1 적용 모터에 따라 길이는 변경될 수 있습니다.
- ※2 모터 축과 감속기의 입력축 내경이 다를 경우에는 부싱이 삽입됩니다.
- ※1 Length will vary depending on motor.
- ※2 Bushing will be inserted to adapt to motor shaft.

SMT 200 1단 1stage



- ※1 적용 모터에 따라 길이는 변경될 수 있습니다.
- ※2 모터 축과 감속기의 입력축 내경이 다를 경우에는 부싱이 삽입됩니다.
- ※1 Length will vary depending on motor.
- ※2 Bushing will be inserted to adapt to motor shaft.

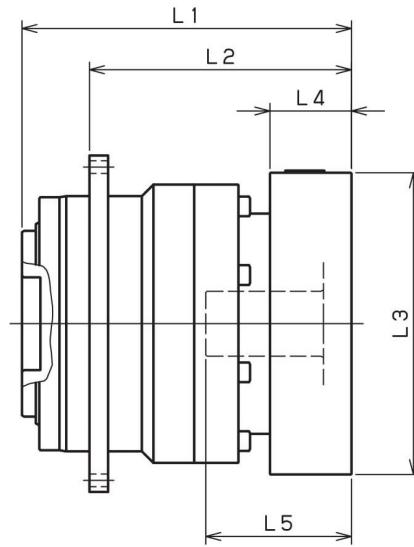
SMT 200 2단 2stage



A부분 상세도
Enlarged detail A

- ※1 적용 모터에 따라 길이는 변경될 수 있습니다.
- ※2 모터 축과 감속기의 입력축 내경이 다를 경우에는 부싱이 삽입됩니다.
- ※1 Length will vary depending on motor.
- ※2 Bushing will be inserted to adapt to motor shaft.

SMT 064

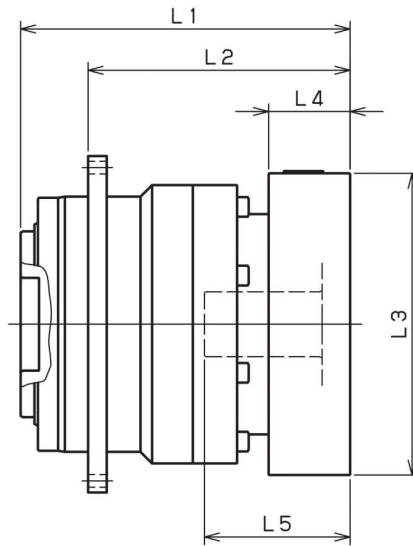


모델명 Model number	** : 어댑터 코드 ** : Adapter code (Mount code)	1단 Single					2단 Double				
		L1	L2	L3	L4	L5	L1	L2	L3	L4	L5
SMT064□□□-8** (입력축 내경 ≤ φ8 Input shaft bore)	AA·AC·AD·AF·AG	79	59.5	□52	15.5	32	98	78.5	□52	15.5	32
	AB·AE·AH·AJ·AK	84	64.5	□52	20.5	37	103	83.5	□52	20.5	37
	BA·BB·BD·BE	79	59.5	□60	15.5	32	98	78.5	□60	15.5	32
	BC·BF	84	64.5	□60	20.5	37	103	83.5	□60	20.5	37
	CA	84	64.5	□70	20.5	37	103	83.5	□70	20.5	37
SMT064□□□-14** (입력축 내경 ≤ φ14 Input shaft bore)	BA·BB·BD·BE·BF·BG·BJ·BK	82	62.5	□65	16.5	35	103	83.5	□65	16.5	35
	BC·BH·BM	87	67.5	□65	21.5	40	108	88.5	□65	21.5	40
	BL	92	72.5	□65	26.5	45	113	93.5	□65	26.5	45
	CA	82	62.5	□70	16.5	35	103	83.5	□70	16.5	35
	CB	87	67.5	□70	21.5	40	108	88.5	□70	21.5	40
	DA·DB·DC·DD·DF·DH	82	62.5	□80	16.5	35	103	83.5	□80	16.5	35
	DE	87	67.5	□80	21.5	40	108	88.5	□80	21.5	40
	DG	92	72.5	□80	26.5	45	113	93.5	□80	26.5	45
	EA·EB·EC	82	62.5	□90	16.5	35	103	83.5	□90	16.5	35
	ED	92	72.5	□90	26.5	45	113	93.5	□90	26.5	45
	FA	82	62.5	□100	16.5	35	103	83.5	□100	16.5	35
	GA	82	62.5	□115	16.5	35	103	83.5	□115	16.5	35
SMT064□□□-19** (입력축 내경 ≤ φ19 Input shaft bore)	DA·DB·DC	97	77.5	□80	25	50					
	DD	107	87.5	□80	35	60					
	DE	102	82.5	□80	30	55					
	EA	102	82.5	□90	30	55					
	EB	97	77.5	□90	25	50					
	EC	107	87.5	□90	35	60					
	FA	97	77.5	□100	25	50					
	FB	107	87.5	□100	35	60					
	GA·GC	102	82.5	□115	30	55					
	GB·GD	97	77.5	□115	25	50					
	HA	97	77.5	□130	25	50					
	HB	112	92.5	□130	40	65					
HC·HD·HE	102	82.5	□130	30	55						

※1 1단 감속비: 1/4~1/10 ; 2단 감속비: 1/16~1/100
 ※2 모터 축과 감속기의 입력축 내경이 다를 경우에는 부싱이 삽입됩니다.

※1 Single reduction : 1/4 ~ 1/10, Double reduction : 1/16 ~ 1/100
 ※2 Bushing will be inserted to adapt to motor shaft.

SMT 090



모델명 Model number	** : 어댑터 코드 ** : Adapter code (Mount code)	1단 Single					2단 Double				
		L1	L2	L3	L4	L5	L1	L2	L3	L4	L5
SMT090□□□-8** (입력축 내경 ≤ φ8 Input shaft bore)	AA·AC·AD·AF·AG	/	/	/	/	/	117	87	□52	15.5	32
	AB·AE·AH·AJ·AK	/	/	/	/	/	122	92	□52	20.5	37
	BA·BB·BD·BE	/	/	/	/	/	117	87	□60	15.5	32
	BC·BF	/	/	/	/	/	122	92	□60	20.5	37
	CA	/	/	/	/	/	122	92	□70	20.5	37
SMT090□□□-14** (입력축 내경 ≤ φ14 Input shaft bore)	BA·BB·BD·BE·BF·BG·BJ·BK	100	70	□65	16.5	35	122	92	□65	16.5	35
	BC·BH·BM	105	75	□65	21.5	40	127	97	□65	21.5	40
	BL	110	80	□65	26.5	45	132	102	□65	26.5	45
	CA	100	70	□70	16.5	35	122	92	□70	16.5	35
	CB	105	75	□70	21.5	40	127	97	□70	21.5	40
	DA·DB·DC·DD·DF·DH	100	70	□80	16.5	35	122	92	□80	16.5	35
	DE	105	75	□80	21.5	40	127	97	□80	21.5	40
	DG	110	80	□80	26.5	45	132	102	□80	26.5	45
	EA·EB·EC	100	70	□90	16.5	35	122	92	□90	16.5	35
	ED	110	80	□90	26.5	45	132	102	□90	26.5	45
SMT090□□□-19** (입력축 내경 ≤ φ19 Input shaft bore)	FA	100	70	□100	16.5	35	122	92	□100	16.5	35
	GA	100	70	□115	16.5	35	122	92	□115	16.5	35
	DA·DB·DC	110	80	□80	25	50	132	102	□80	25	50
	DD	120	90	□80	35	60	142	112	□80	35	60
	DE	115	85	□80	30	55	137	107	□80	30	55
	EA	115	85	□90	30	55	137	107	□90	30	55
	EB	110	80	□90	25	50	132	102	□90	25	50
	EC	120	90	□90	35	60	142	112	□90	35	60
	FA	110	80	□100	25	50	132	102	□100	25	50
	FB	120	90	□100	35	60	142	112	□100	35	60
SMT090□□□-28** (입력축 내경 ≤ φ28 Input shaft bore)	GA·GC	115	85	□115	30	55	137	107	□115	30	55
	GB·GD	110	80	□115	25	50	132	102	□115	25	50
	HA	110	80	□130	25	50	132	102	□130	25	50
	HB	125	95	□130	40	65	147	117	□130	40	65
	HC·HD·HE	115	85	□130	30	55	137	107	□130	30	55
	FA·FB·FC	127	97	□100	35	67	/	/	/	/	/
	GA·GB·GC·GD·GE·GF·GG	127	97	□115	35	67	/	/	/	/	/
	HA·HC·HD	127	97	□130	35	67	/	/	/	/	/
	HB	137	107	□130	45	77	/	/	/	/	/
	JA·JB·JC	127	97	□150	35	67	/	/	/	/	/
SMT090□□□-28** (입력축 내경 ≤ φ28 Input shaft bore)	KA·KB	127	97	□180	35	67	/	/	/	/	/
	KD	137	107	□180	45	77	/	/	/	/	/
	LA	127	97	□200	35	67	/	/	/	/	/
	MA	127	97	□220	35	67	/	/	/	/	/

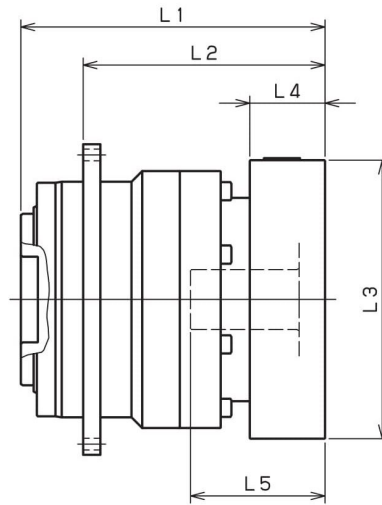
※ 1 단 감속비: 1/4~1/10 ; 2 단 감속비: 1/16~1/100

※ 2 모터 축과 감속기의 입력축 내경이 다를 경우에는 부싱이 삽입됩니다.

※ 1 Single reduction : 1/4 ~ 1/10, Double reduction : 1/16 ~ 1/100

※ 2 Bushing will be inserted to adapt to motor shaft.

SMT 110

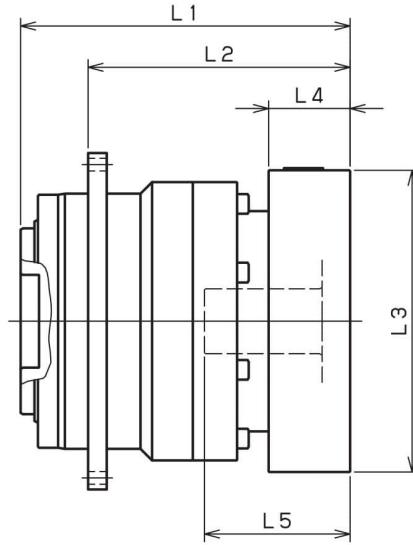


모델명 Model number	** : 어댑터 코드 ** : Adapter code (Mount code)	1단 Single					2단 Double				
		L1	L2	L3	L4	L5	L1	L2	L3	L4	L5
SMT110□□□-14** (입력축 내경 ≤ φ14 Input shaft bore)	BA·BB·BD·BE·BF·BG·BJ·BK						142	113	□65	16.5	35
	BC·BH·BM						147	118	□65	21.5	40
	BL						152	123	□65	26.5	45
	CA						142	113	□70	16.5	35
	CB						147	118	□70	21.5	40
	DA·DB·DC·DD·DF·DH						142	113	□80	16.5	35
	DE						147	118	□80	21.5	40
	DG						152	123	□80	26.5	45
	EA·EB·EC						142	113	□90	16.5	35
	ED						152	123	□90	26.5	45
	FA						142	113	□100	16.5	35
GA						142	113	□115	16.5	35	
SMT110□□□-19** (입력축 내경 ≤ φ19 Input shaft bore)	DA·DB·DC	124.5	95.5	□80	25	50	152	123	□80	25	50
	DD	134.5	105.5	□80	35	60	162	133	□80	35	60
	DE	129.5	100.5	□80	30	55	157	128	□80	30	55
	EA	129.5	100.5	□90	30	55	157	128	□90	30	55
	EB	124.5	95.5	□90	25	50	152	123	□90	25	50
	EC	134.5	105.5	□90	35	60	162	133	□90	35	60
	FA	124.5	95.5	□100	25	50	152	123	□100	25	50
	FB	134.5	105.5	□100	35	60	162	133	□100	35	60
	GA·GC	129.5	100.5	□115	30	55	157	128	□115	30	55
	GB·GD	124.5	95.5	□115	25	50	152	123	□115	25	50
	HA	124.5	95.5	□130	25	50	152	123	□130	25	50
	HB	139.5	110.5	□130	40	65	167	138	□130	40	65
	HC·HD·HE	129.5	100.5	□130	30	55	157	128	□130	30	55
SMT110□□□-28** (입력축 내경 ≤ φ28 Input shaft bore)	FA·FB·FC	141.5	112.5	□100	35	67	169	140	□100	35	67
	GA·GB·GC·GD·GE·GF·GG	141.5	112.5	□115	35	67	169	140	□115	35	67
	HA·HC·HD	141.5	112.5	□130	35	67	169	140	□130	35	67
	HB	151.5	122.5	□130	45	77	179	150	□130	45	77
	JA·JB·JC	141.5	112.5	□150	35	67	169	140	□150	35	67
	KA·KB	141.5	112.5	□180	35	67	169	140	□180	35	67
	KD	151.5	122.5	□180	45	77	179	150	□180	45	77
	LA	141.5	112.5	□200	35	67	169	140	□200	35	67
	MA	141.5	112.5	□220	35	67	169	140	□220	35	67
SMT110□□□-38** (입력축 내경 ≤ φ38 Input shaft bore)	HA	162.5	133.5	□130	45	82					
	HB	157.5	128.5	□130	40	77					
	JA	162.5	133.5	□150	45	82					
	KA·KB·KC	162.5	133.5	□180	45	82					
	LA	162.5	133.5	□200	45	82					
	LB	172.5	143.5	□200	55	92					
	MA·MB	162.5	133.5	□220	45	82					
NA	162.5	133.5	□250	45	82						

※1 1단 감속비: 1/4~1/10 ; 2단 감속비: 1/16~1/100
 ※2 모터 축과 감속기의 입력축 내경이 다를 경우에는 부싱이 삽입됩니다.

※1 Single reduction : 1/4 ~ 1/10, Double reduction : 1/16 ~ 1/100
 ※2 Bushing will be inserted to adapt to motor shaft.

SMT 140



모델명 Model number	** : 어댑터 코드 ** : Adapter code (Mount code)	1단 Single					2단 Double				
		L1	L2	L3	L4	L5	L1	L2	L3	L4	L5
MKT-140-□-□-19** (입력축 내경 ≤ φ19 Input shaft bore)	DA·DB·DC	/	/	/	/	/	192	154	□80	25	50
	DD	/	/	/	/	/	202	164	□80	35	60
	DE	/	/	/	/	/	197	159	□80	30	55
	EA	/	/	/	/	/	197	159	□90	30	55
	EB	/	/	/	/	/	192	154	□90	25	50
	EC	/	/	/	/	/	202	164	□90	35	60
	FA	/	/	/	/	/	192	154	□100	25	50
	FB	/	/	/	/	/	202	164	□100	35	60
	GA·GC	/	/	/	/	/	197	159	□115	30	55
	GB·GD	/	/	/	/	/	192	154	□115	25	50
	HA	/	/	/	/	/	192	154	□130	25	50
	HB	/	/	/	/	/	207	169	□130	40	65
	HC·HD·HE	/	/	/	/	/	197	159	□130	30	55
MKT-140-□-□-28** (입력축 내경 ≤ φ28 Input shaft bore)	FA·FB·FC	174.5	136.5	□100	35	67	209	171	□100	35	67
	GA·GB·GC·GD·GE·GF·GG	174.5	136.5	□115	35	67	209	171	□115	35	67
	HA·HC·HD	174.5	136.5	□130	35	67	209	171	□130	35	67
	HB	184.5	146.5	□130	45	77	219	181	□130	45	77
	JA·JB·JC	174.5	136.5	□150	35	67	209	171	□150	35	67
	KA·KB	174.5	136.5	□180	35	67	209	171	□180	35	67
	KD	184.5	146.5	□180	45	77	219	181	□180	45	77
	LA	174.5	136.5	□200	35	67	209	171	□200	35	67
MA	174.5	136.5	□220	35	67	209	171	□220	35	67	
MKT-140-□-□-38** (입력축 내경 ≤ φ38 Input shaft bore)	HA	189.5	151.5	□130	45	82	224	186	□130	45	82
	HB	184.5	146.5	□130	40	77	219	181	□130	40	77
	JA	189.5	151.5	□150	45	82	224	186	□150	45	82
	KA·KB·KC	189.5	151.5	□180	45	82	224	186	□180	45	82
	LA	189.5	151.5	□200	45	82	224	186	□200	45	82
	LB	199.5	161.5	□200	55	92	234	196	□200	55	92
	MA·MB	189.5	151.5	□220	45	82	224	186	□220	45	82
NA	189.5	151.5	□250	45	82	224	186	□250	45	82	
MKT-140-□-□-48** (입력축 내경 ≤ φ48 Input shaft bore)	KB·KC	210.5	172.5	□180	55	98	/	/	/	/	/
	KA	230.5	192.5	□180	75	118	/	/	/	/	/
	LA	210.5	172.5	□200	55	98	/	/	/	/	/
	MA	210.5	172.5	□220	55	98	/	/	/	/	/
	MB	230.5	192.5	□220	75	118	/	/	/	/	/
	NA	230.5	192.5	□250	75	118	/	/	/	/	/
PA	230.5	192.5	□280	75	118	/	/	/	/	/	

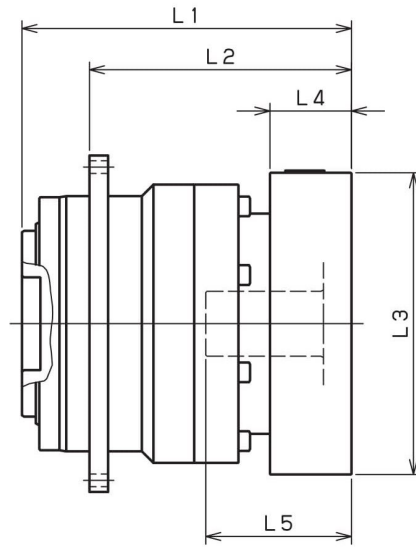
※ 1 단 감속비: 1/4~1/10 ; 2단 감속비: 1/16~1/100

※ 2 모터 축과 감속기의 입력축 내경이 다를 경우에는 부싱이 삽입됩니다.

※ 1 Single reduction : 1/4 ~ 1/10, Double reduction : 1/16 ~ 1/100

※ 2 Bushing will be inserted to adapt to motor shaft.

SMT 200



모델명 Model number	** : 어댑터 코드 ** : Adapter code (Mount code)	1단 Single					2단 Double				
		L1	L2	L3	L4	L5	L1	L2	L3	L4	L5
SMT200□□□-28** (입력축 내경 ≤ φ28 Input shaft bore)	FA·FB·FC	/	/	/	/	/	253.5	203.5	□100	35	67
	GA·GB·GC·GD·GE·GF·GG	/	/	/	/	/	253.5	203.5	□115	35	67
	HA·HC·HD	/	/	/	/	/	253.5	203.5	□130	35	67
	HB	/	/	/	/	/	263.5	213.5	□130	45	77
	JA·JB·JC	/	/	/	/	/	253.5	203.5	□150	35	67
	KA·KB	/	/	/	/	/	253.5	203.5	□180	35	67
	KD	/	/	/	/	/	263.5	213.5	□180	45	77
	LA	/	/	/	/	/	253.5	203.5	□200	35	67
SMT200□□□-38** (입력축 내경 ≤ φ38 Input shaft bore)	MA	/	/	/	/	/	253.5	203.5	□220	35	67
	HA	224	174	□130	45	82	268.5	218.5	□130	45	82
	HB	219	169	□130	40	77	263.5	213.5	□130	40	77
	JA	224	174	□150	45	82	268.5	218.5	□150	45	82
	KA·KB·KC	224	174	□180	45	82	268.5	218.5	□180	45	82
	LA	224	174	□200	45	82	268.5	218.5	□200	45	82
	LB	234	184	□200	55	92	278.5	228.5	□200	55	92
	MA·MB	224	174	□220	45	82	268.5	218.5	□220	45	82
SMT200□□□-48** (입력축 내경 ≤ φ48 Input shaft bore)	NA	224	174	□250	45	82	268.5	218.5	□250	45	82
	KB·KC	240	190	□180	55	98	284.5	234.5	□180	55	98
	KA	260	210	□180	75	118	304.5	254.5	□180	75	118
	LA	240	190	□200	55	98	284.5	234.5	□200	55	98
	MA	240	190	□220	55	98	284.5	234.5	□220	55	98
	MB	260	210	□220	75	118	304.5	254.5	□220	75	118
	NA	260	210	□250	75	118	304.5	254.5	□250	75	118
SMT200□□□-65** (입력축 내경 ≤ φ65 Input shaft bore)	PA	260	210	□280	75	118	304.5	254.5	□280	75	118
	MA·MB·MC·MD	271.5	221.5	□220	80	122	/	/	/	/	/
	NA	271.5	221.5	□250	80	122	/	/	/	/	/
	PA	291.5	241.5	□280	100	142	/	/	/	/	/
	PB	301.5	251.5	□280	110	152	/	/	/	/	/
QA	291.5	241.5	□320	100	142	/	/	/	/	/	

※1 1단 감속비: 1/4~1/10 ; 2단 감속비: 1/16~1/100
 ※2 모터 축과 감속기의 입력축 내경이 다를 경우에는 부싱이 삽입됩니다.

※1 Single reduction : 1/4 ~ 1/10, Double reduction : 1/16 ~ 1/100
 ※2 Bushing will be inserted to adapt to motor shaft.