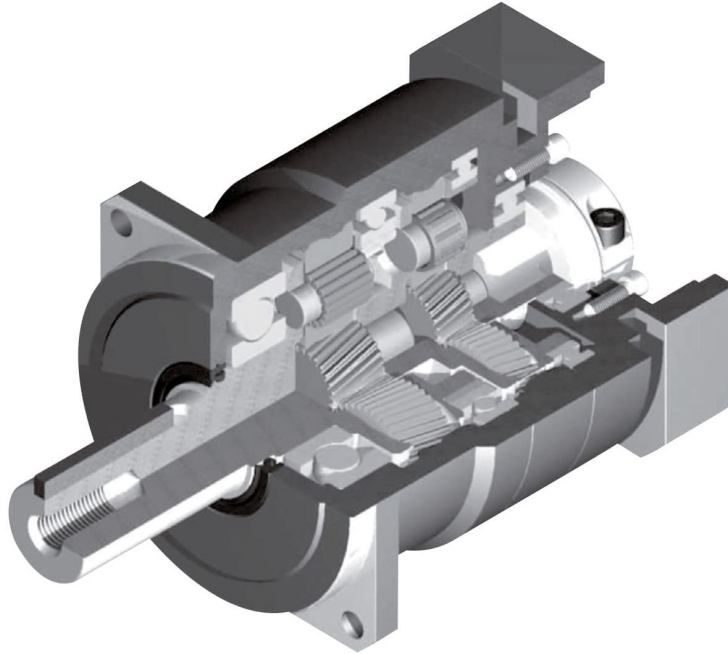


SMB series



정속한 운전

헬리컬 기어 적용으로 저진동, 저소음 실현.

Quiet operation

Helical gears contribute to reduce vibration and noise.

고정밀

표준 백래시 ≤ 3 arc-min.

High precision

Standard backlash is 3 arc-min, ideal for precision control.

고강성 & 고평크

Uncaged 니들롤러베어링을 사용하여 강성과 토크 향상.

High rigidity & torque

High rigidity & high torque were achieved by uncaged needle roller bearings.

어댑터-부싱 연결방식

다양한 모터에 취부 가능.

Adapter-bushing connection

Can be attached to any motor all over the world.

그리스 누유현상 없음

고점도 분리방지 그리스를 사용.

No grease leakage

Perfect solution using high viscosity anti-separation grease.

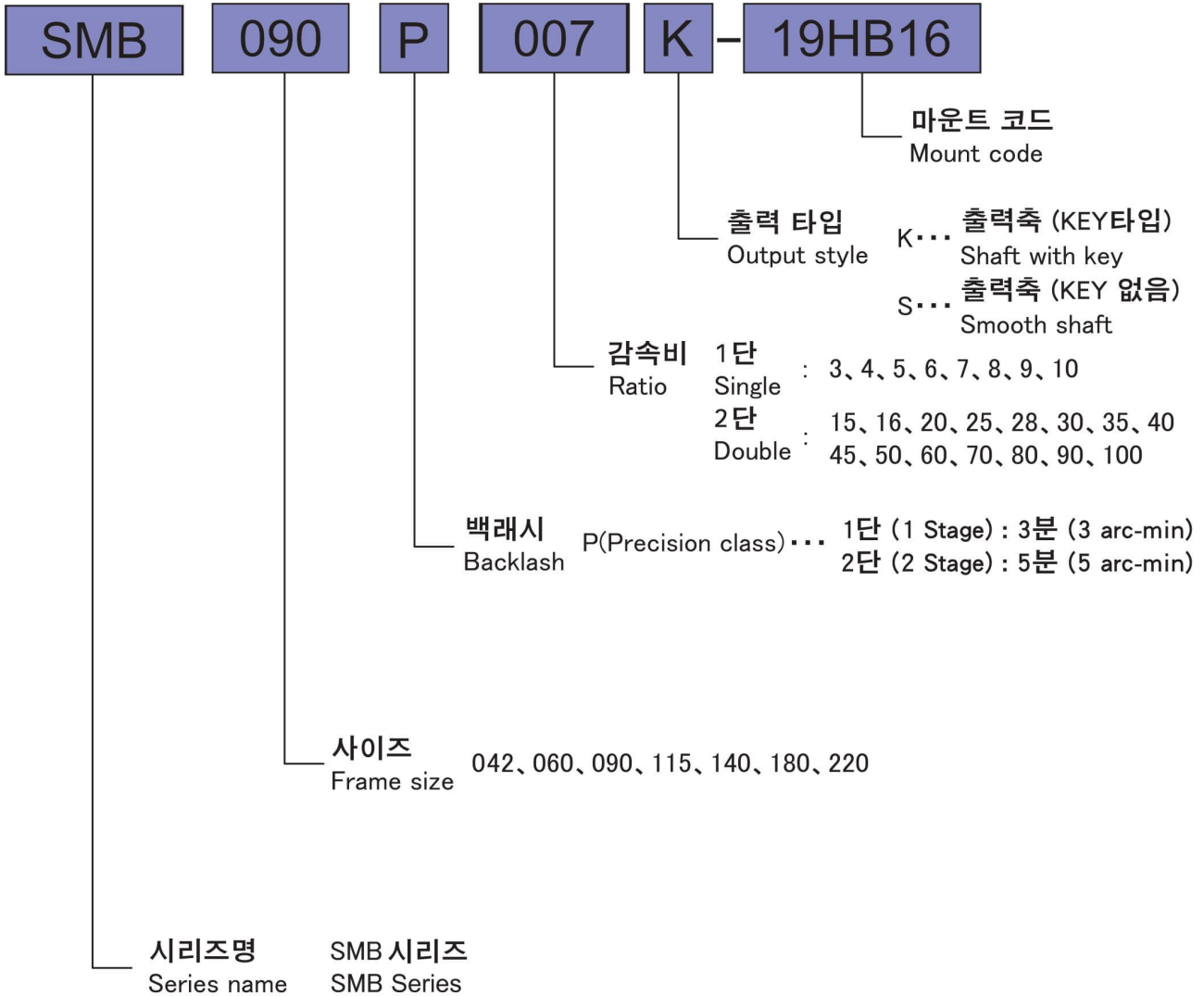
유지 보수 불필요

제품 수명 동안 그리스 교체 불필요 자유로운 설치 가능.

Maintenance-free

No need to replace the grease for the life of the unit.
Can be attached in any position.

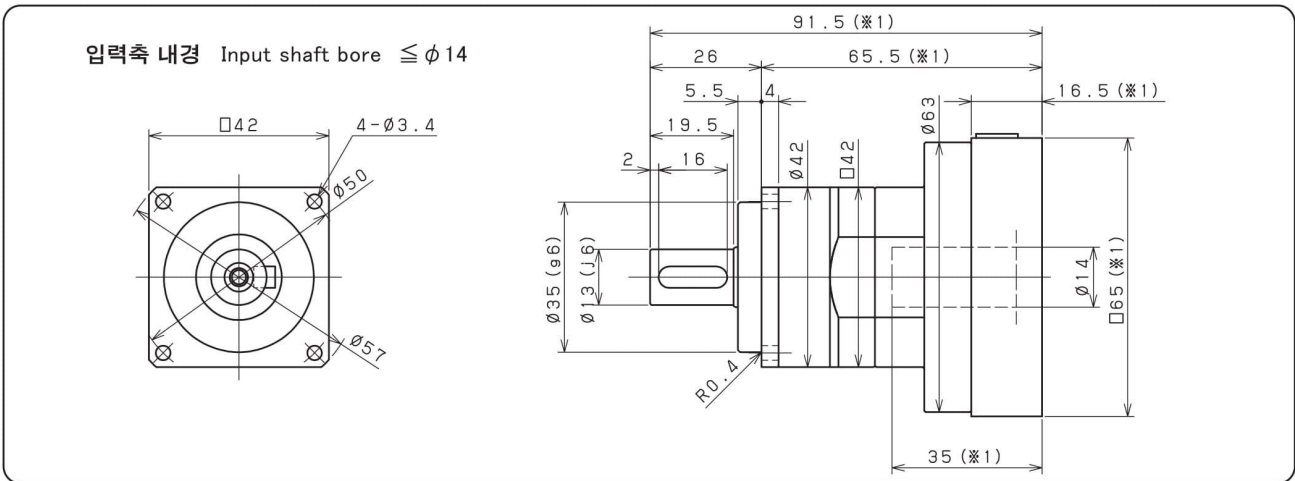
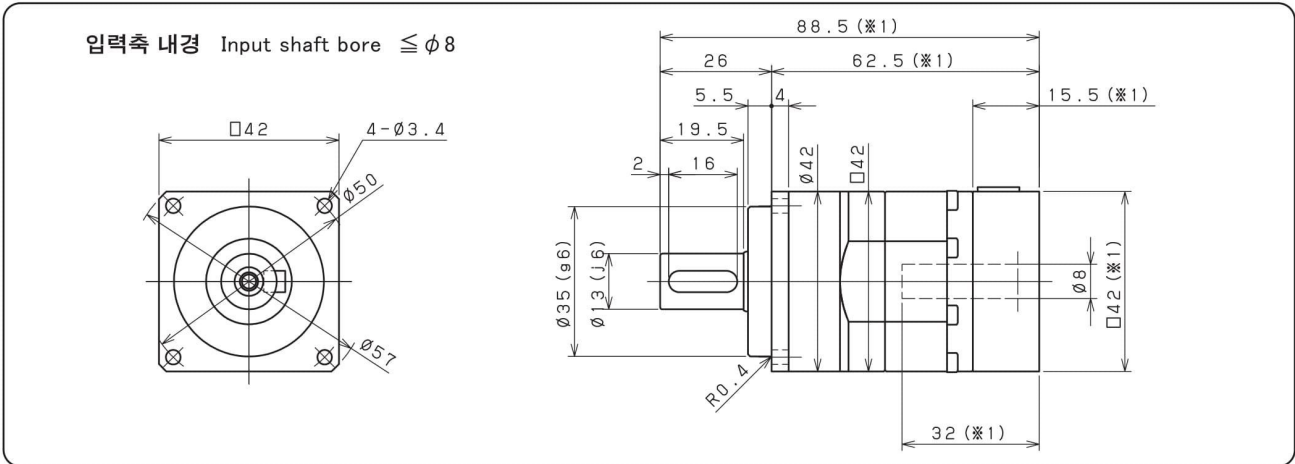
SMB series



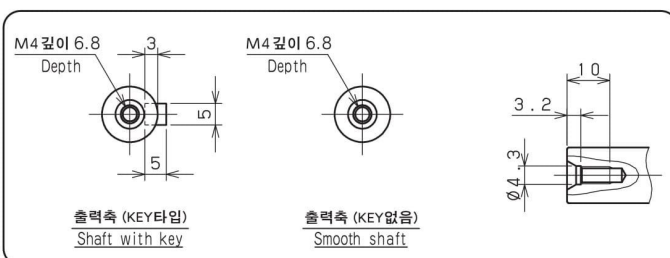
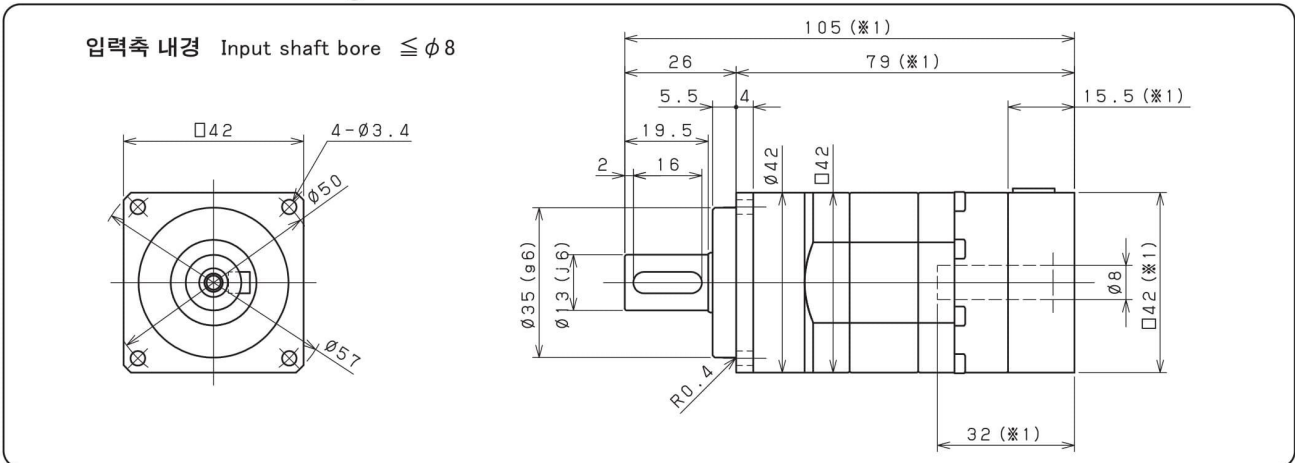
Model No.		Unit	Stage	Ratio ¹	SMB042	SMB060	SMB090	SMB115	SMB140	SMB180	SMB220
Rated Output Torque (Nominal Output torque)	T_{2N}	Nm	1	3	13	39	106	195	440	750	1,500
				4	16	39	110	210	460	950	1,600
				5	19	43	110	210	580	1,200	2,000
				6	15	43	108	160	530	1,100	1,600
				7	15	43	108	200	490	1,000	1,500
				8	15	43	79	190	420	900	1,200
				9	15	35	90	170	390	800	1,100
				10	15	30	88	170	370	800	1,100
				15	13	35	84	195	440	750	1,450
				16	16	39	100	210	460	950	1,800
			20	16	39	100	210	460	950	1,900	
			25	19	43	110	210	580	1,200	2,000	
			28	18	43	108	200	580	1,200	1,500	
			30	13	39	90	195	440	900	1,500	
			35	18	43	108	200	580	1,200	1,500	
			40	19	43	110	210	460	1,200	2,000	
			45	17	39	90	170	580	1,200	1,100	
			50	19	43	110	210	580	1,200	2,000	
			60	18	43	108	160	580	1,200	1,600	
			70	18	43	108	200	490	1,100	1,500	
80	17	43	79	190	420	900	1,200				
90	17	39	90	170	390	800	1,100				
100	17	39	88	170	370	800	1,100				
Max. Acceleration Torque	T_{2B}	Nm	1,2	3~100	1.8 Times of Rated Output Torque						
Max. Output Torque Emergency Stop Torque	T_{2NOT}	Nm	1,2	3~100	3 Times of Rated Output Torque						
Nominal Input speed	n_{1n}	rpm	1,2	3~100	3,000	3,000	3,000	3,000	2,000	1,500	1,000
Max. Input speed	n_{1B}	rpm	1,2	3~100	6,000	6,000	6,000	6,000	5,000	4,000	3,000
Backlash (Precision class)		arcmin	1	3~10	≤3	≤3	≤3	≤3	≤3	≤3	≤3
			2	15~100	≤5	≤5	≤5	≤5	≤5	≤5	≤5
Torsional Rigidity		Nm/arcmin	1,2	3~100	2	5	12	23	38	110	210
Max. Radial load ²	F_{2rB}	N	1,2	3~100	570	1,100	2,150	3,600	7,500	10,500	10,500
Max. Axial load ²	F_{2aB}	N	1,2	3~100	300	600	1,800	2,500	3,000	6,000	11,300
Service life	L_H	hr	1,2	3~100	20,000	20,000	20,000	20,000	20,000	20,000	20,000
Noise level ³		dB(A)	1,2	3~100	≤56	≤58	≤60	≤63	≤65	≤67	≤70
Weight		kg	1	3~10	0.6	1.4	3.7	8	16	36	53
			2	15~100	0.7	1.6	4.2	8.9	17	37	54
Mass Moments of Inertia ⁴		kg cm ²	1	3~10	0.04	0.16	0.86	3.6	14	44	52
			2	15~100	0.03	0.13	0.71	2.8	11	34	35
Operating Temp. ⁵		°C	1,2	3~100	-10 ~ +90						
Lubrication			1,2	3~100	High temperature & Extreme pressure Lubricant						
Mounting position			1,2	3~100	All directions						
Efficiency	η	%	1	3~10	≥ 97						
			2	15~100	≥ 94						
Degree of protection			1,2	3~100	IP 65						

- (1) Ratio (감속비) = N_{in} / N_{out}
- (2) 기준 : 출력회전수 100rpm, 출력축 중앙 부하, 부하계수(Ka)=1, 연속운전 10,000시간
These values are based on the following conditions : 100 rpm at the output. Load applied to the middle of the output shaft.
Load coefficient(Ka)=1. Continuous operation(S1≒10,000hrs).
- (3) 입력 회전수 3000 rpm, 무부하 운전상태에서 감속기 취부면에서 1m 떨어진 거리에서 측정 (모델에 따라 차이가 있을수 있습니다)
Noise level : A measurement 1m away from the reducer (with ratio10 or ratio 100), 3000 input rpm and at no load condition.
(Background noise 40dB(A)) With lower ratio and/or higher rpm, the noise level could be 3 to 5 dB higher.
- (4) 관성모멘트 : 감속비 중 대표값 (i=1/5)
Moment of inertia : A measurement at the input shaft and representatives from each ratio.(i=1/5)
- (5) 감속기 작동온도 : -10~+90 °C, 감속기 주위온도 -10~40°C
Operating temperature : Surface temperature of gear case in -10 °C~40 °C of ambient temperature.
- ※ 제품 성능 향상을 위해 사양은 별도의 고지 없이 변경될 수 있습니다.
Specifications are subject to change without notice to improve product performances.

SMB 042 1단 1stage



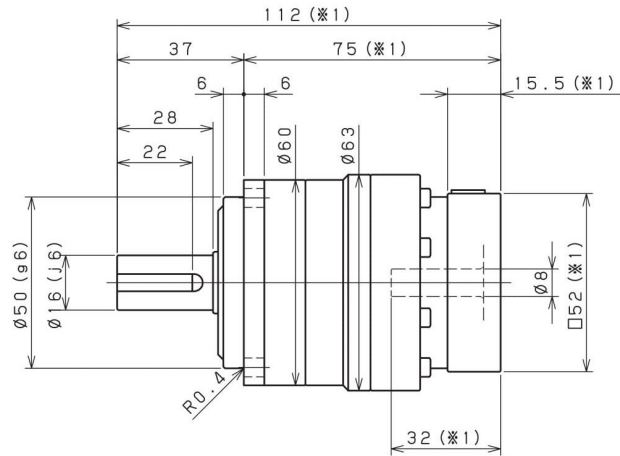
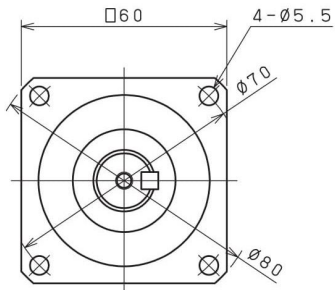
SMB 042 2단 2stage



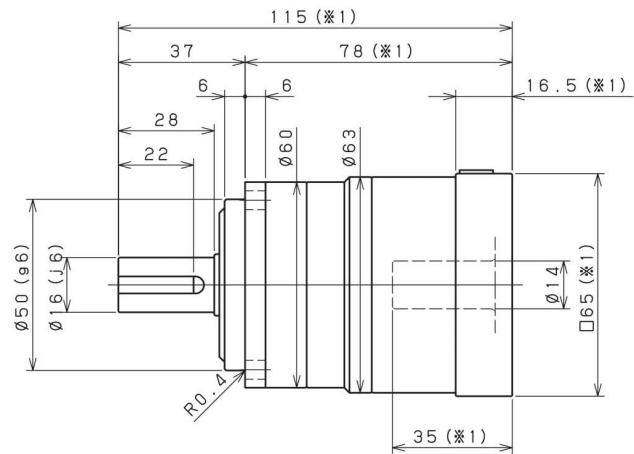
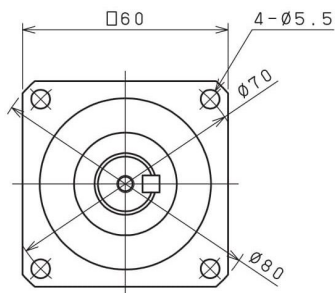
- ※1 적용 모터에 따라 길이는 변경될 수 있습니다.
- ※2 모터 축과 감속기의 입력축 내경이 다를 경우에는 부싱이 삽입됩니다.
- ※1 Length will vary depending on motor.
- ※2 Bushing will be inserted to adapt to motor shaft.

SMB 060 1단 1stage

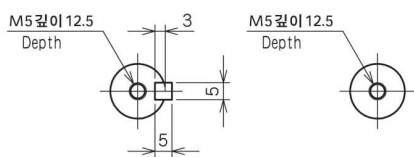
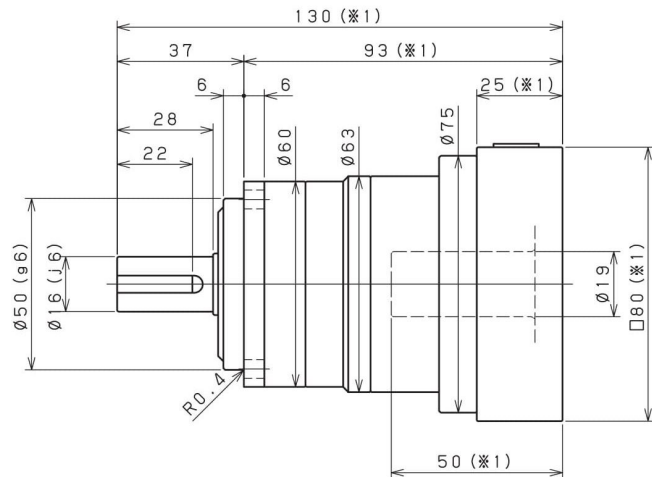
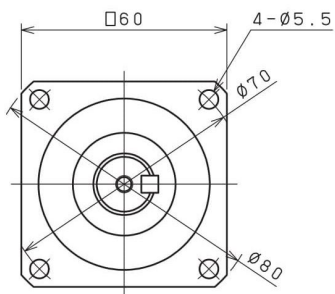
입력축 내경 Input shaft bore $\leq \phi 8$



입력축 내경 Input shaft bore $\leq \phi 14$



입력축 내경 Input shaft bore $\leq \phi 19$

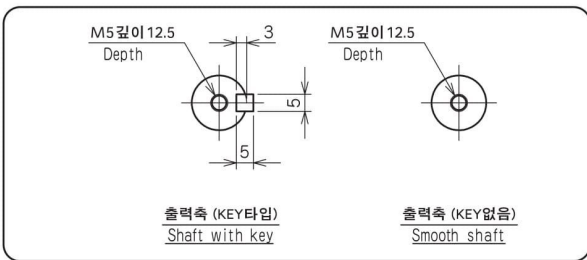
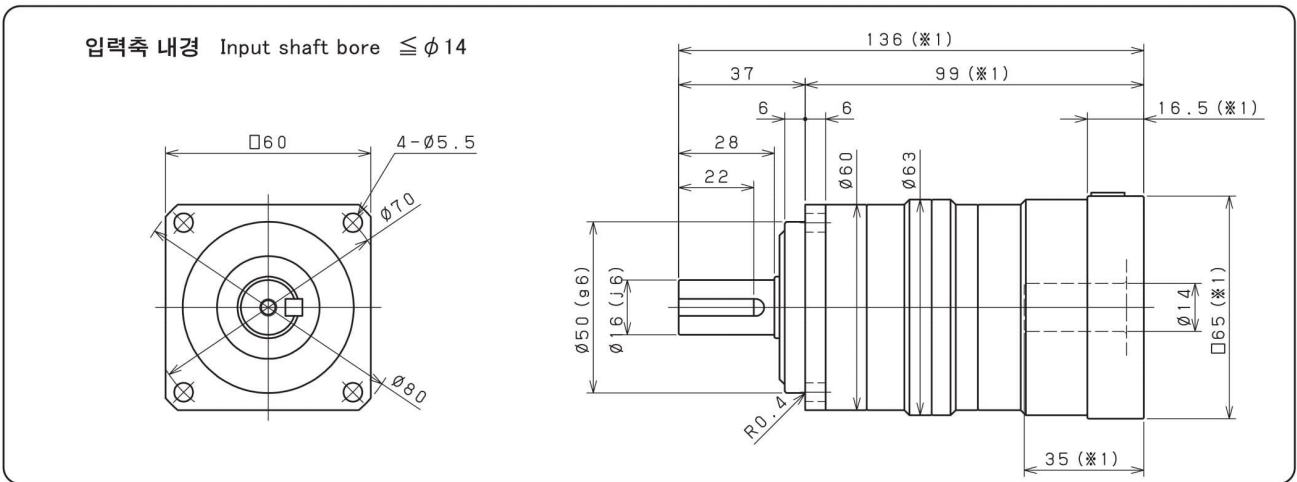
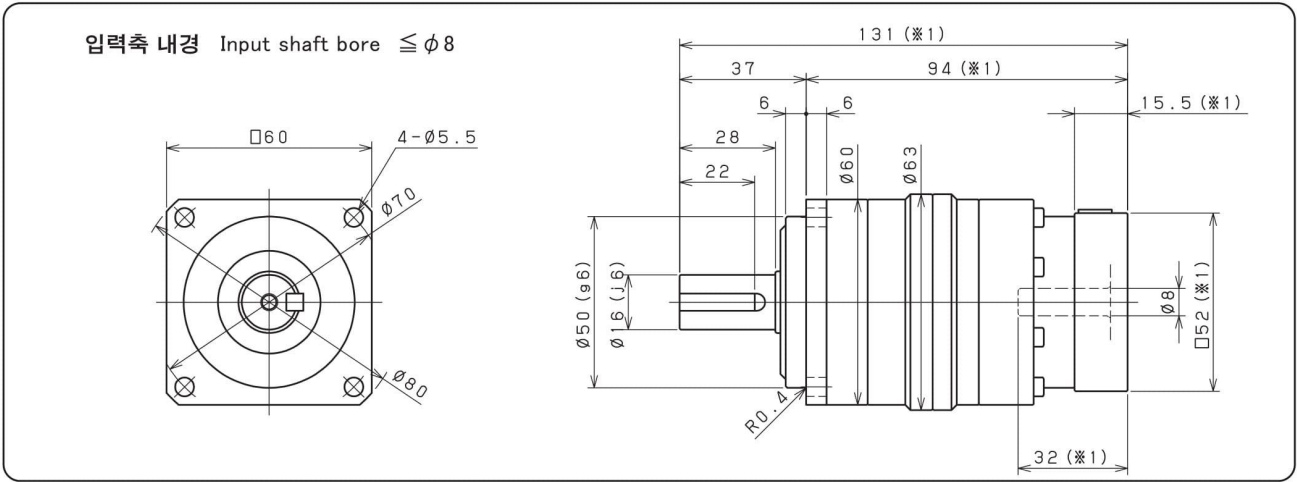


출력축 (KEY타입)
Shaft with key

출력축 (KEY없음)
Smooth shaft

- ※ 1 적용 모터에 따라 길이는 변경될 수 있습니다.
- ※ 2 모터 축과 감속기의 입력축 내경이 다를 경우에는 부싱이 삽입됩니다.
- ※ 1 Length will vary depending on motor.
- ※ 2 Bushing will be inserted to adapt to motor shaft.

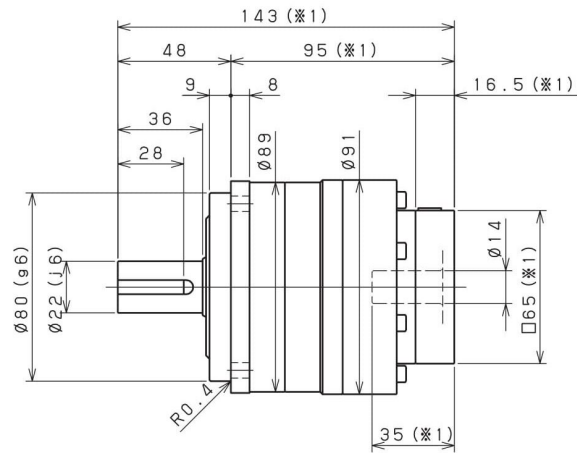
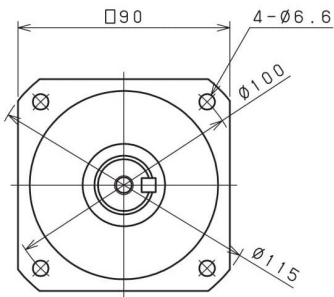
SMB 060 2단 2stage



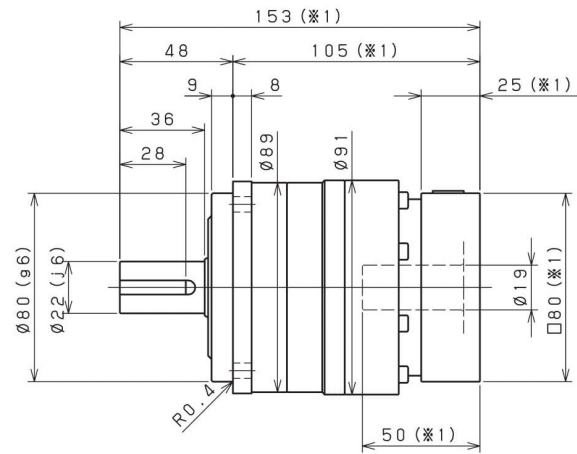
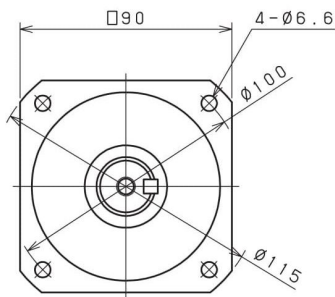
- ※1 적용 모터에 따라 길이는 변경될 수 있습니다.
- ※2 모터 축과 감속기의 입력축 내경이 다를 경우에는 부싱이 삽입됩니다.
- ※1 Length will vary depending on motor.
- ※2 Bushing will be inserted to adapt to motor shaft.

SMB 090 1단 1stage

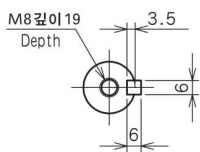
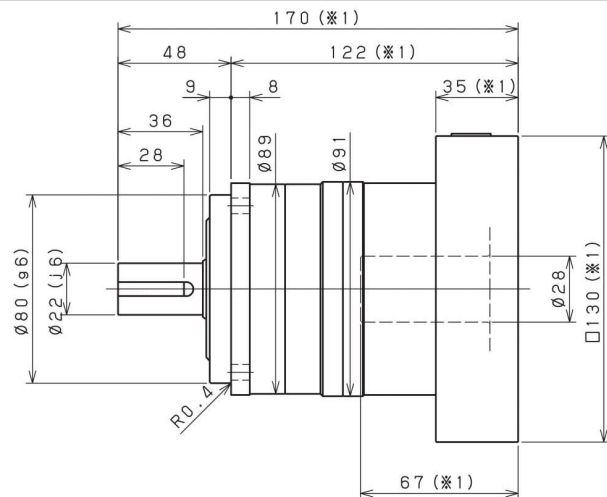
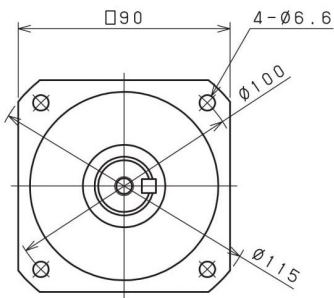
입력축 내경 Input shaft bore $\leq \phi 14$



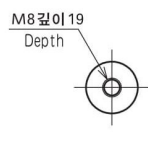
입력축 내경 Input shaft bore $\leq \phi 19$



입력축 내경 Input shaft bore $\leq \phi 28$



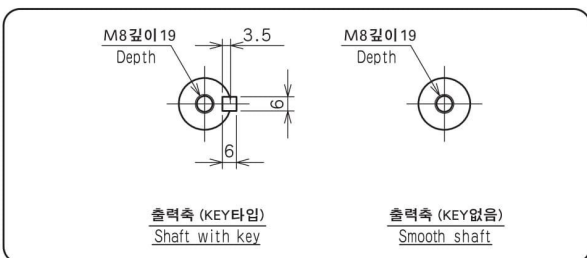
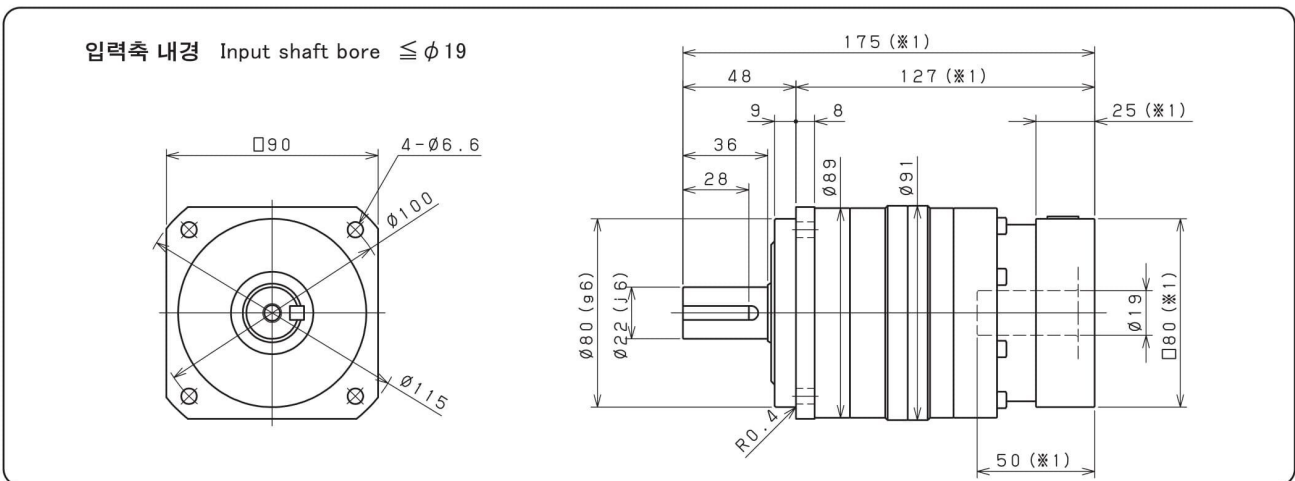
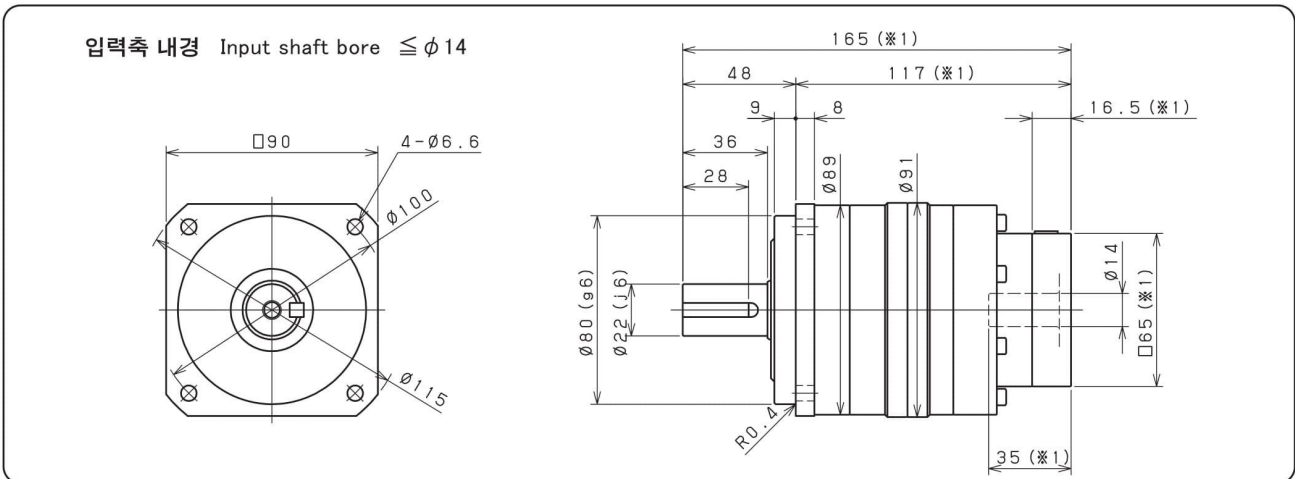
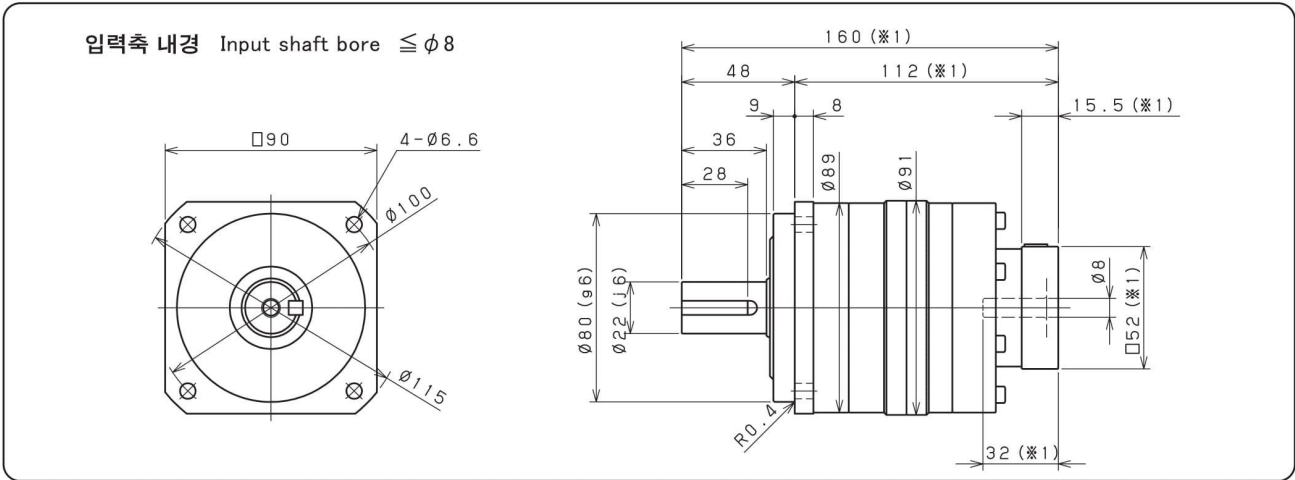
출력축 (KEY타입)
Shaft with key



출력축 (KEY없음)
Smooth shaft

- ※ 1 적용 모터에 따라 길이는 변경될 수 있습니다.
- ※ 2 모터 축과 감속기의 입력축 내경이 다를 경우에는 부싱이 삽입됩니다.
- ※ 1 Length will vary depending on motor.
- ※ 2 Bushing will be inserted to adapt to motor shaft.

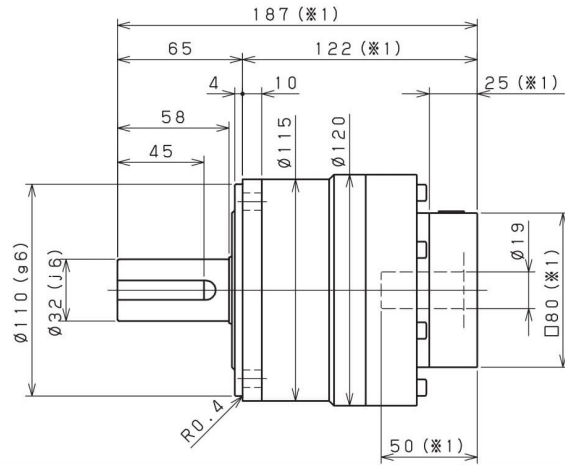
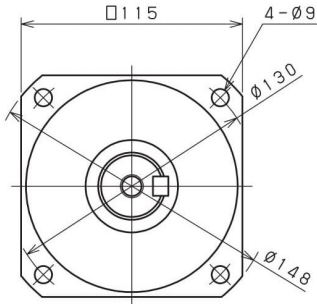
SMB 090 2단 2stage



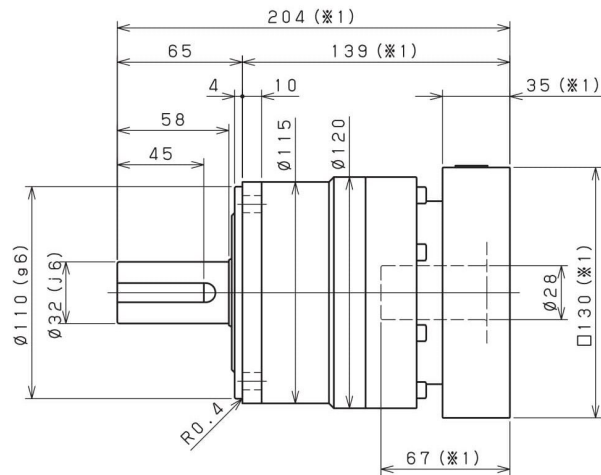
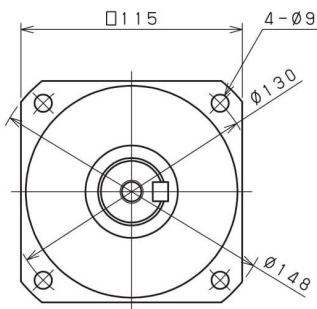
- ※1 적용 모터에 따라 길이는 변경될 수 있습니다.
- ※2 모터 축과 감속기의 입력축 내경이 다를 경우에는 부싱이 삽입됩니다.
- ※1 Length will vary depending on motor.
- ※2 Bushing will be inserted to adapt to motor shaft.

SMB 115 1단 1stage

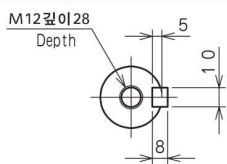
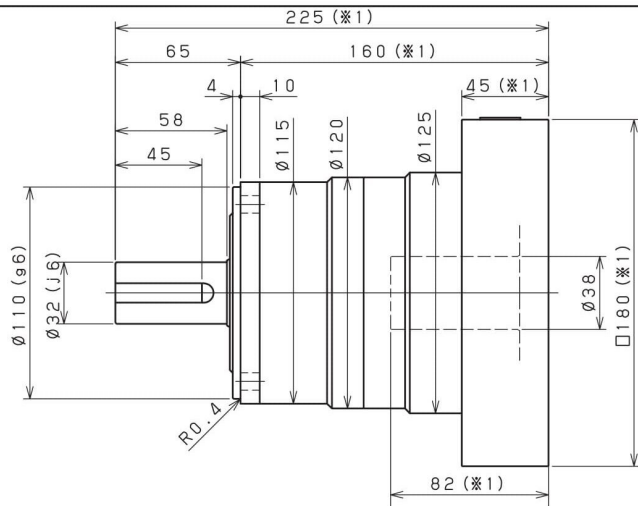
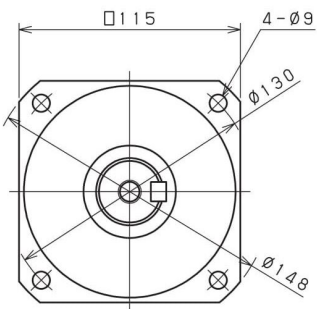
입력축 내경 Input shaft bore $\leq \phi 19$



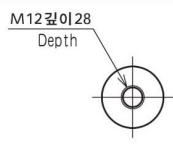
입력축 내경 Input shaft bore $\leq \phi 28$



입력축 내경 Input shaft bore $\leq \phi 38$



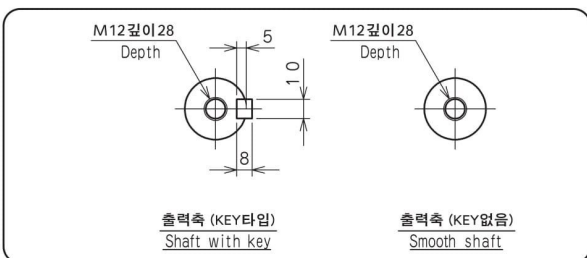
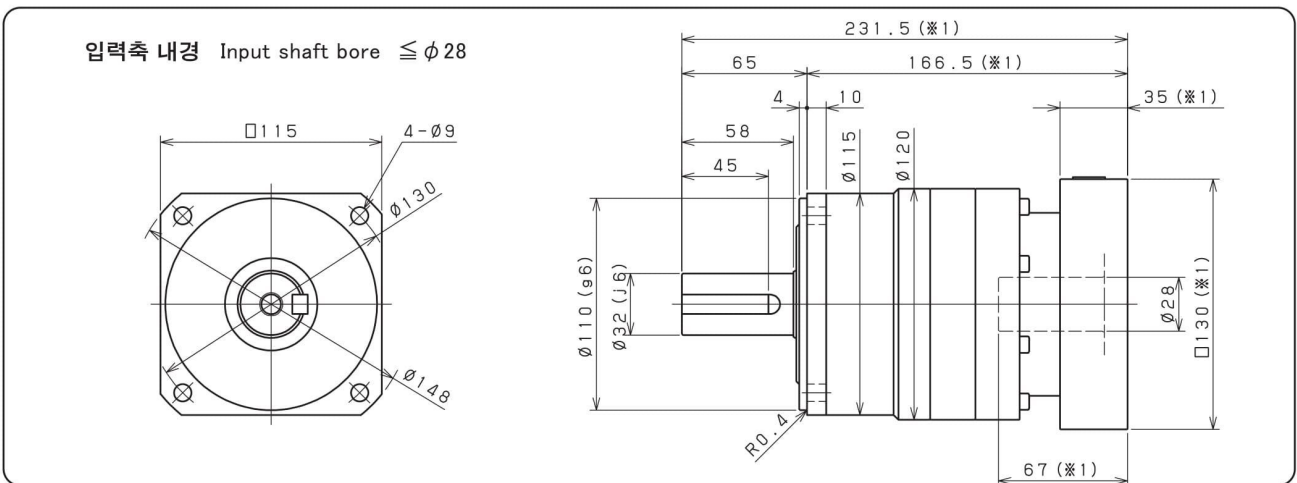
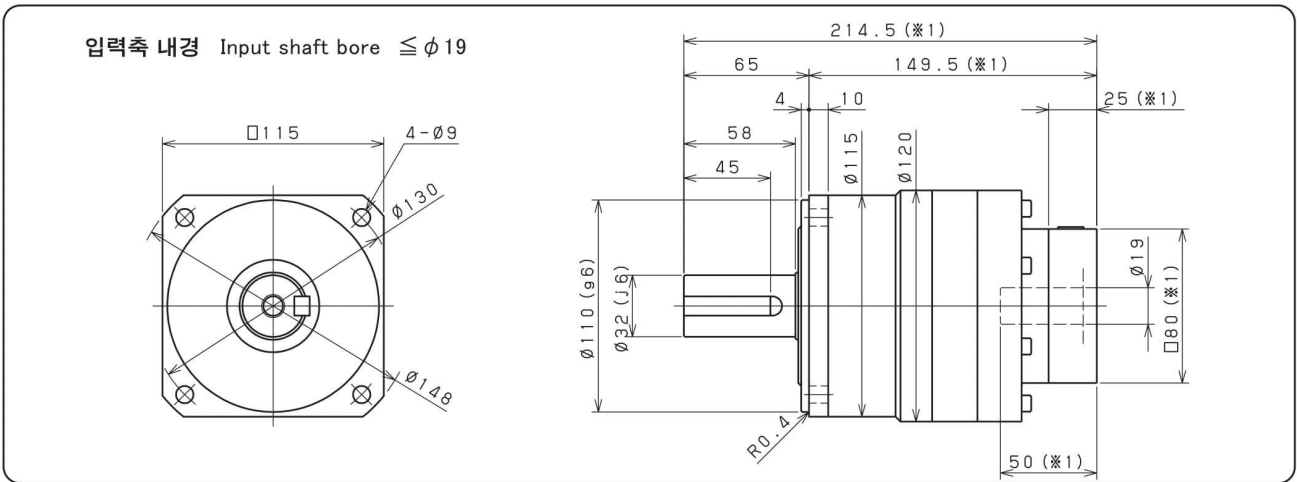
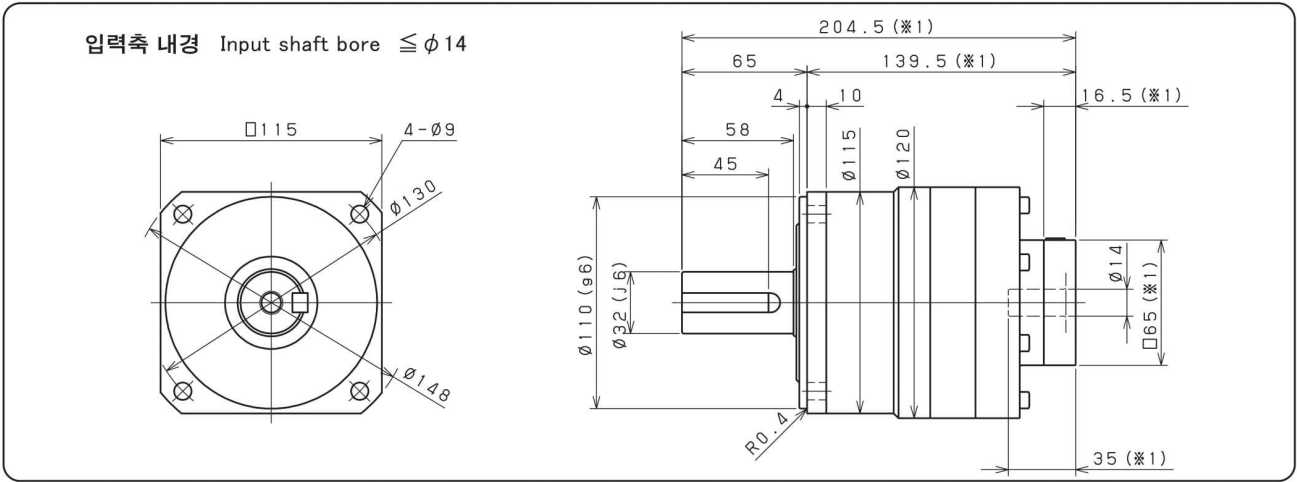
출력축 (KEY타입)
Shaft with key



출력축 (KEY없음)
Smooth shaft

- ※ 1 적용 모터에 따라 길이는 변경될 수 있습니다.
- ※ 2 모터 축과 감속기의 입력축 내경이 다를 경우에는 부싱이 삽입됩니다.
- ※ 1 Length will vary depending on motor.
- ※ 2 Bushing will be inserted to adapt to motor shaft.

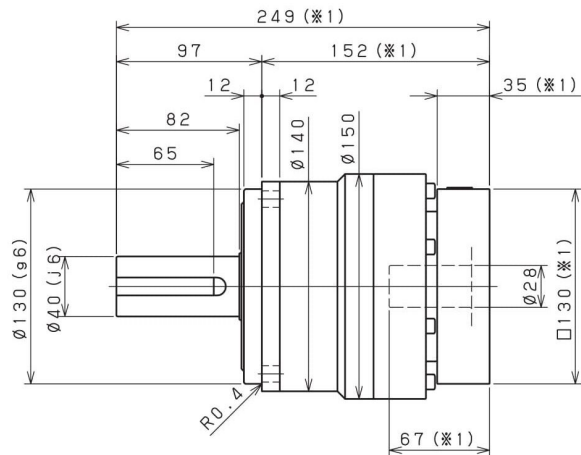
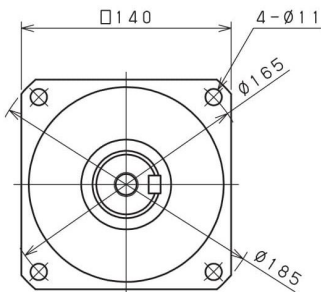
SMB 115 2단 2stage



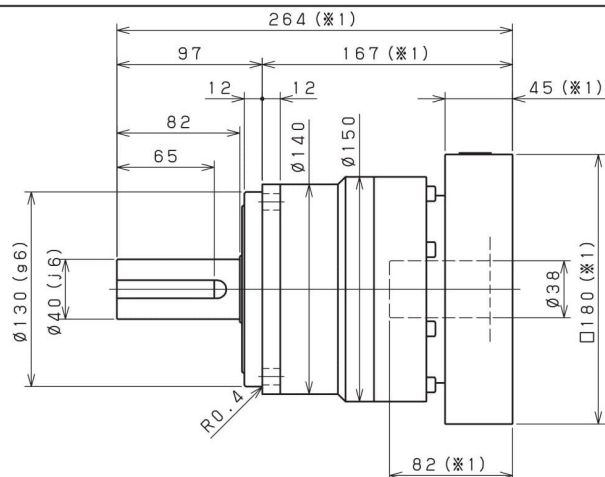
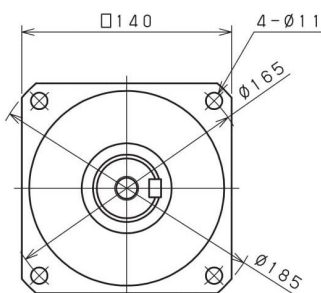
- ※1 적용 모터에 따라 길이는 변경될 수 있습니다.
- ※2 모터 축과 감속기의 입력축 내경이 다를 경우에는 부싱이 삽입됩니다.
- ※1 Length will vary depending on motor.
- ※2 Bushing will be inserted to adapt to motor shaft.

SMB 140 1단 1stage

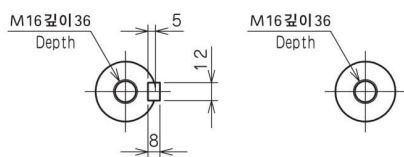
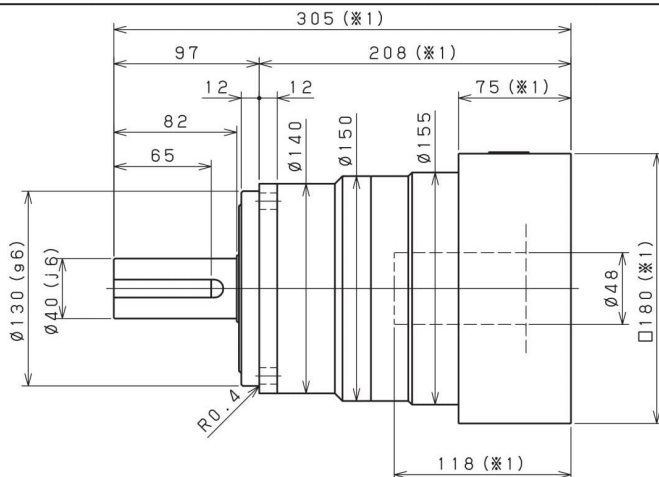
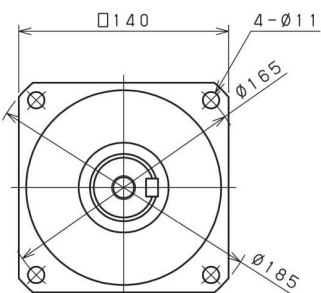
입력축 내경 Input shaft bore $\leq \phi 28$



입력축 내경 Input shaft bore $\leq \phi 38$



입력축 내경 Input shaft bore $\leq \phi 48$

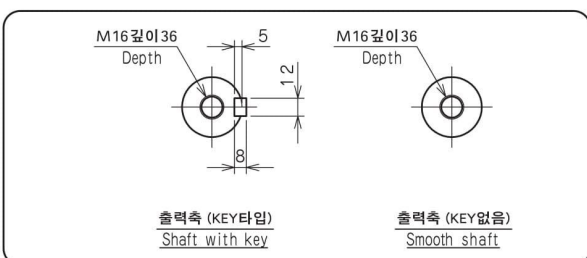
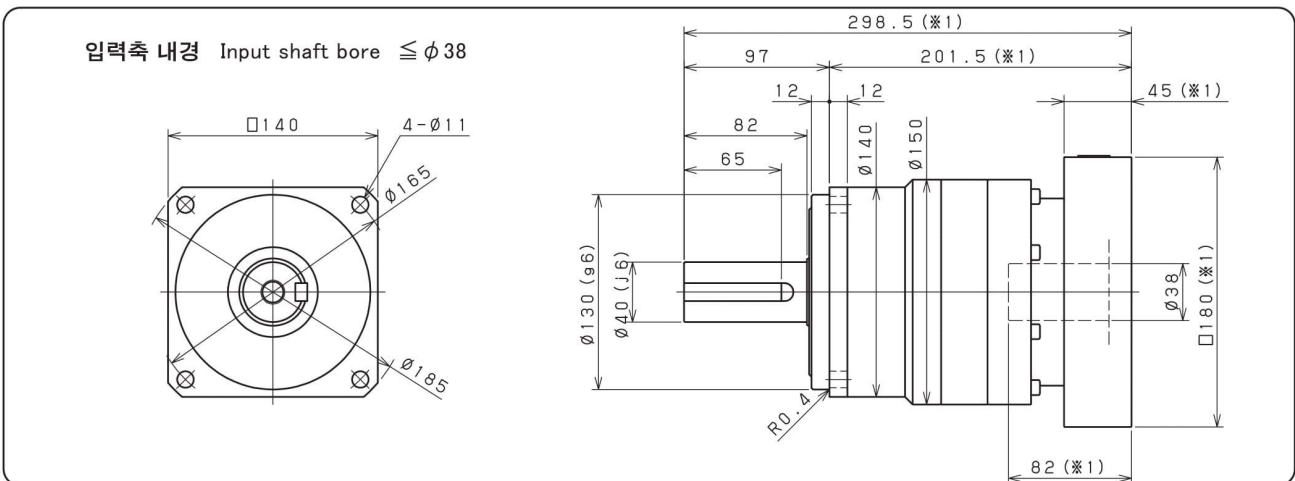
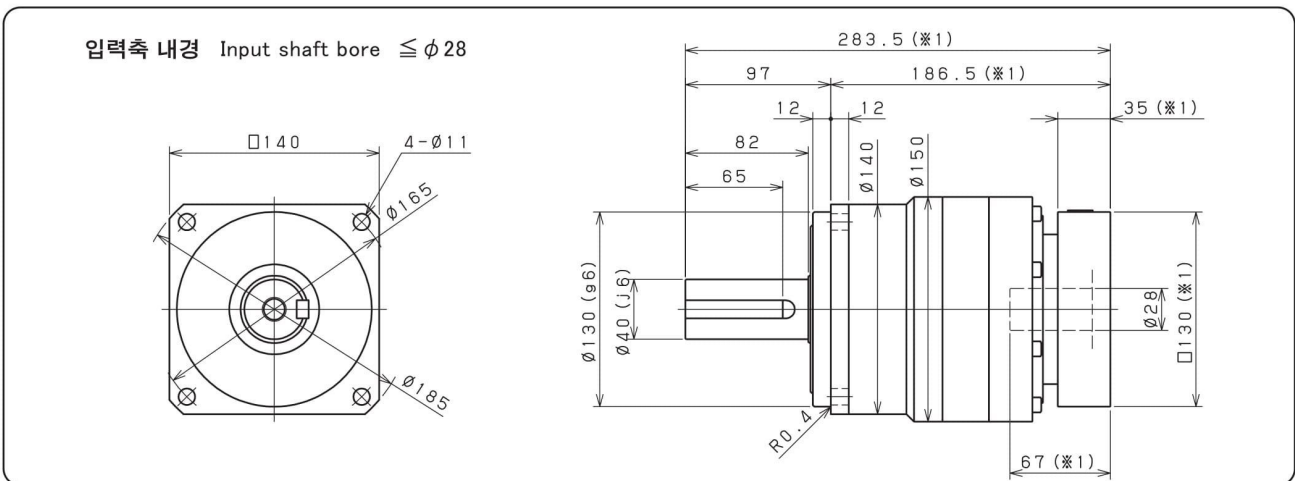
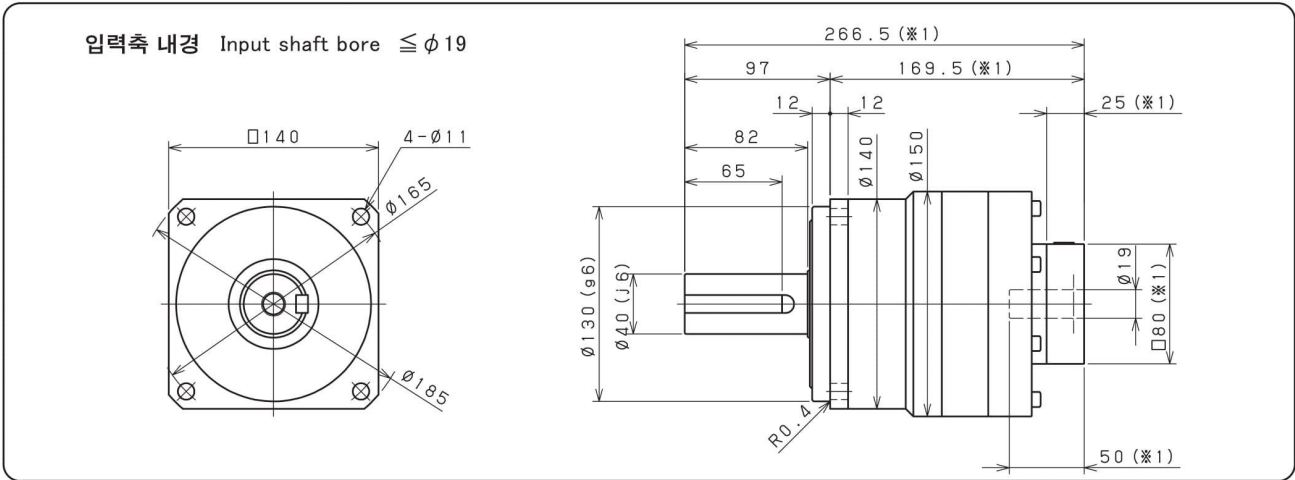


출력축 (KEY타입)
Shaft with key

출력축 (KEY없음)
Smooth shaft

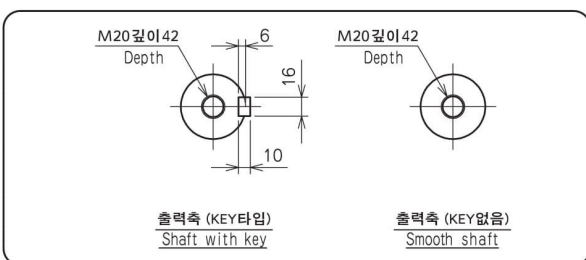
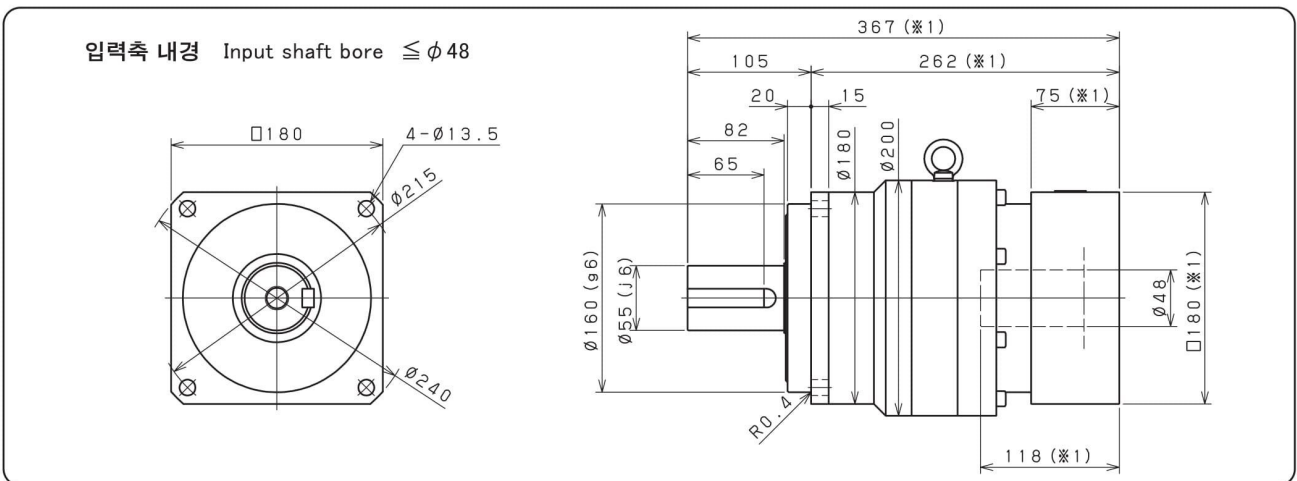
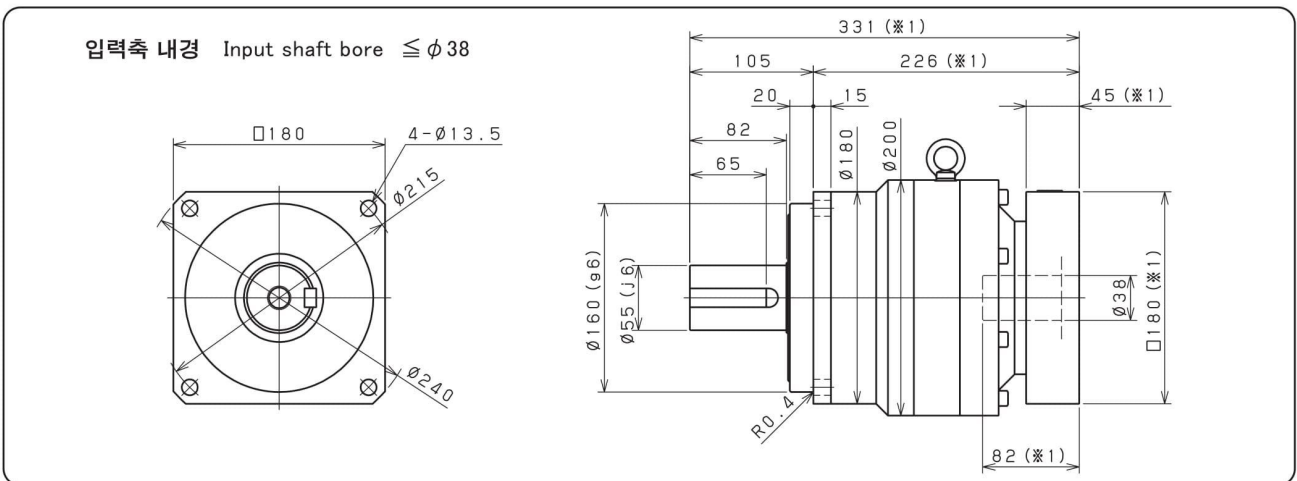
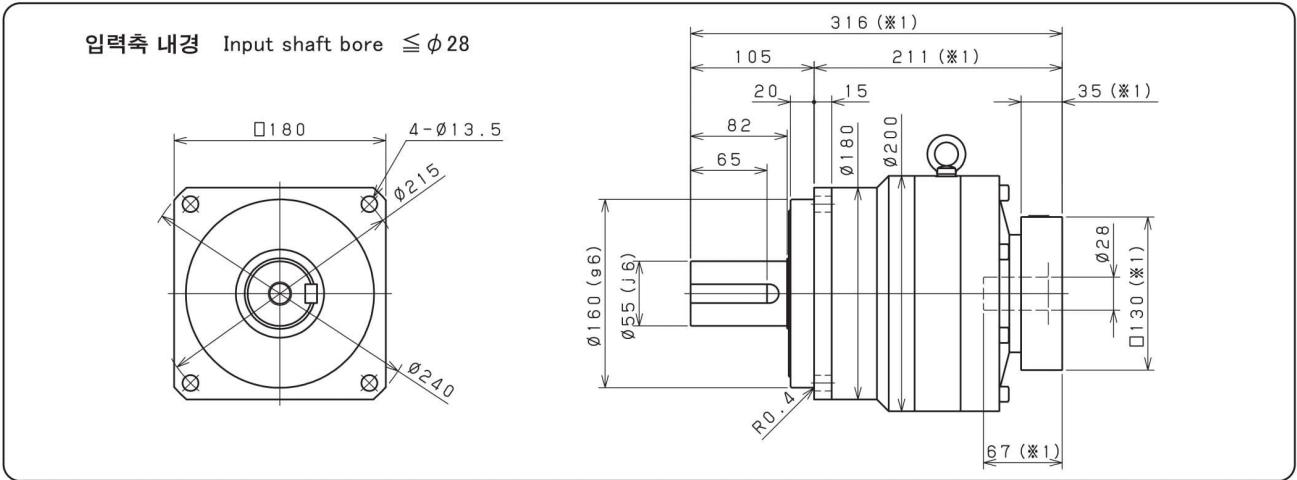
- ※ 1 적용 모터에 따라 길이는 변경될 수 있습니다.
- ※ 2 모터 축과 감속기의 입력축 내경이 다를 경우에는 부싱이 삽입됩니다.
- ※ 1 Length will vary depending on motor.
- ※ 2 Bushing will be inserted to adapt to motor shaft.

SMB 140 2단 2stage



- ※1 적용 모터에 따라 길이는 변경될 수 있습니다.
- ※2 모터 축과 감속기의 입력축 내경이 다를 경우에는 부싱이 삽입됩니다.
- ※1 Length will vary depending on motor.
- ※2 Bushing will be inserted to adapt to motor shaft.

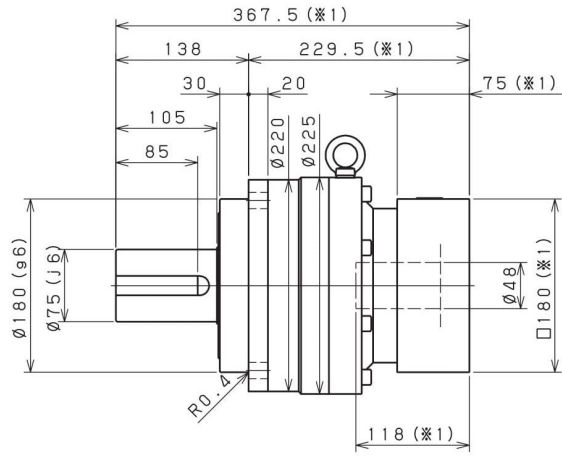
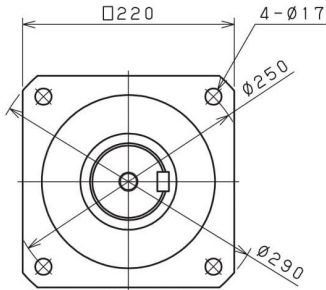
SMB 180 2단 2stage



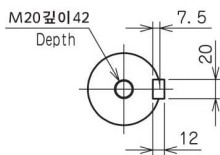
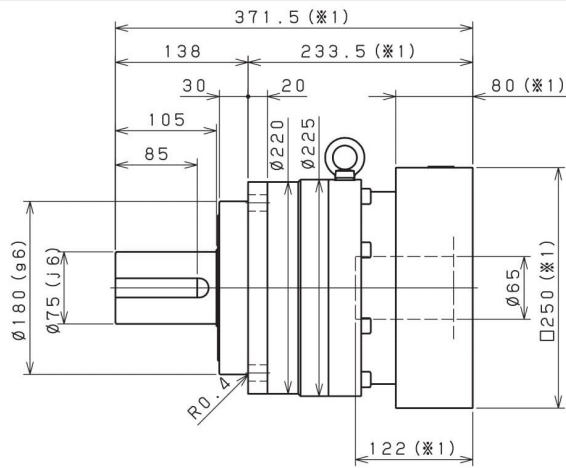
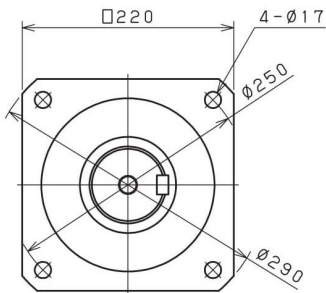
- ※1 적용 모터에 따라 길이는 변경될 수 있습니다.
- ※2 모터 축과 감속기의 입력축 내경이 다를 경우에는 부싱이 삽입됩니다.
- ※1 Length will vary depending on motor.
- ※2 Bushing will be inserted to adapt to motor shaft.

SMB 220 1단 1stage

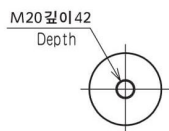
입력축 내경 Input shaft bore $\leq \phi 48$



입력축 내경 Input shaft bore $\leq \phi 65$



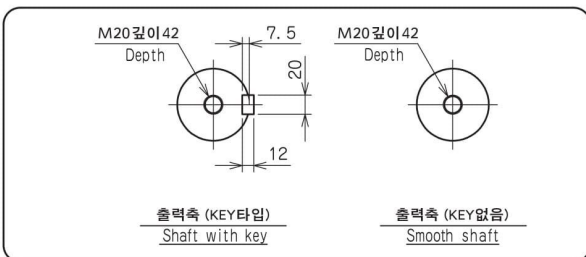
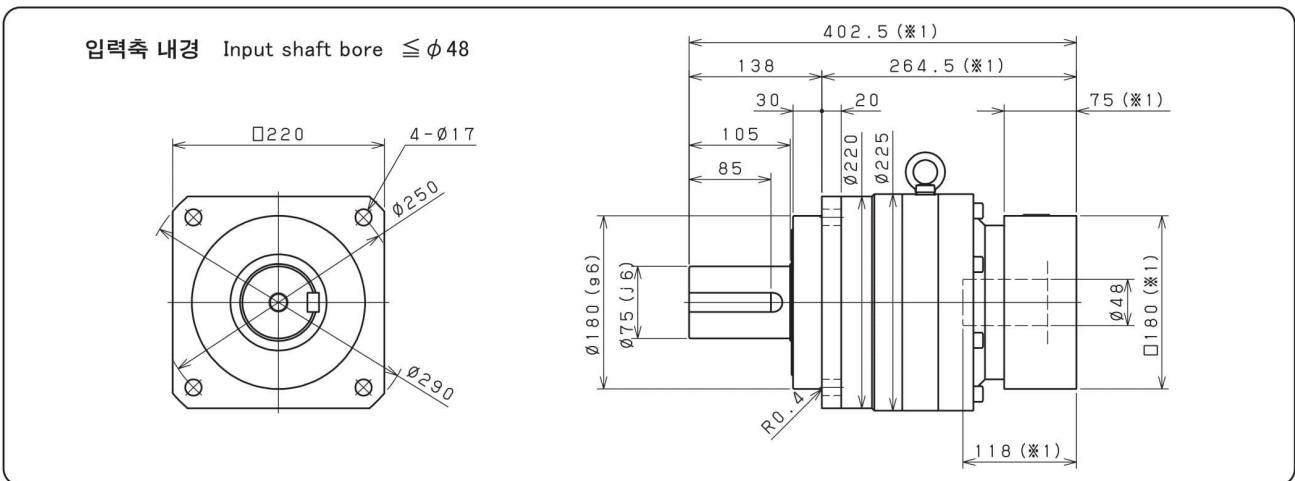
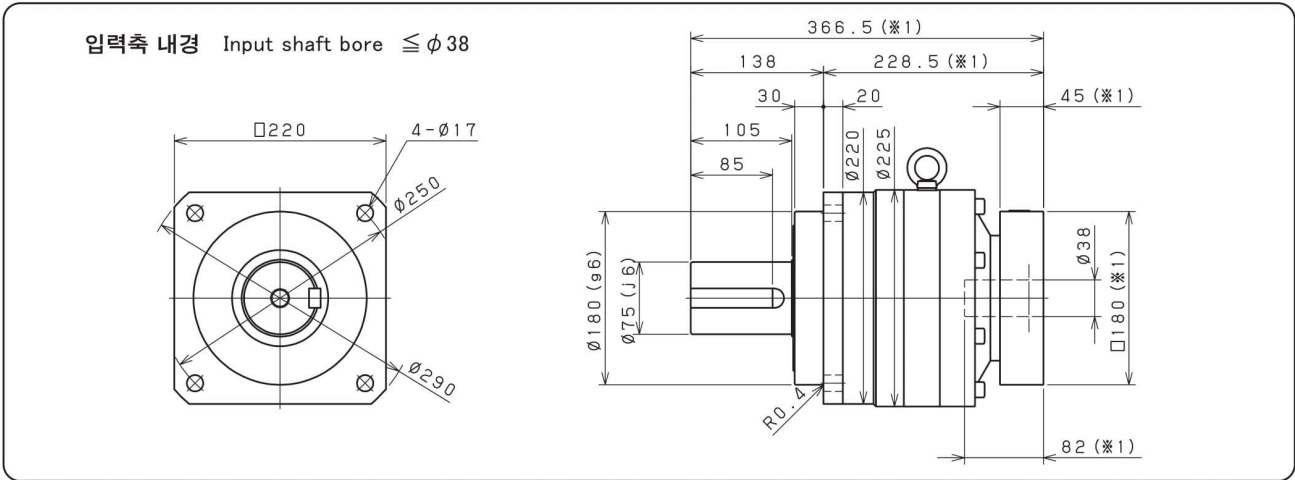
출력축 (KEY타입)
Shaft with key



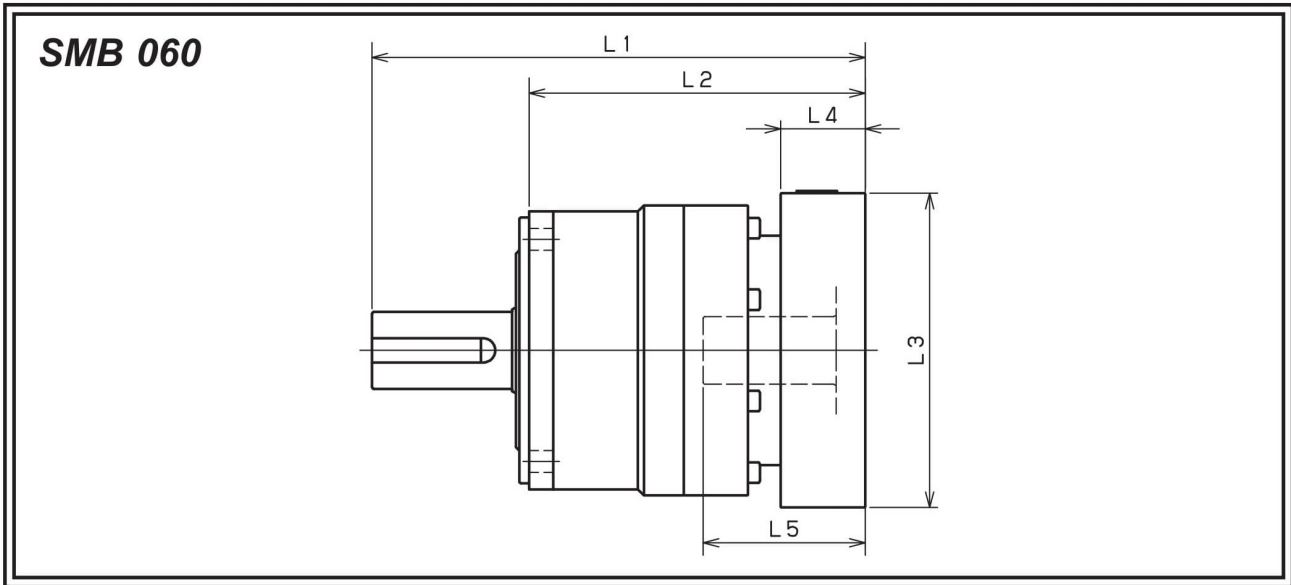
출력축 (KEY없음)
Smooth shaft

- ※1 적용 모터에 따라 길이는 변경될 수 있습니다.
- ※2 모터 축과 감속기의 입력축 내경이 다를 경우에는 부싱이 삽입됩니다.
- ※1 Length will vary depending on motor.
- ※2 Bushing will be inserted to adapt to motor shaft.

SMB 220 2단 2stage



- ※1 적용 모터에 따라 길이는 변경될 수 있습니다.
- ※2 모터 축과 감속기의 입력축 내경이 다를 경우에는 부싱이 삽입됩니다.
- ※1 Length will vary depending on motor.
- ※2 Bushing will be inserted to adapt to motor shaft.



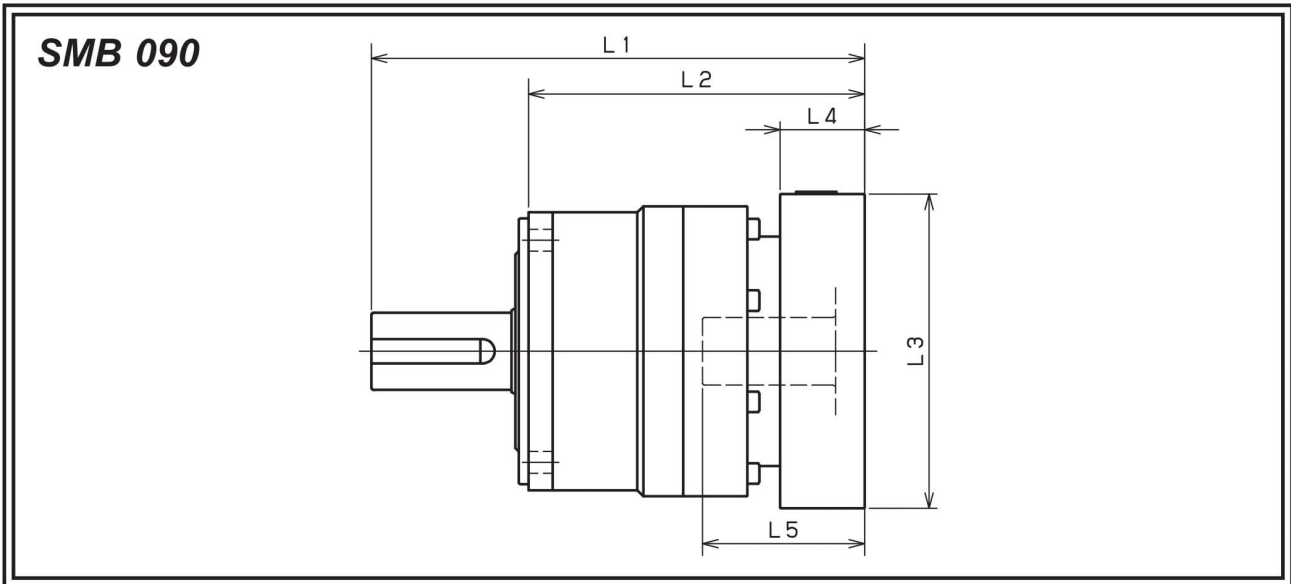
모델명 Model number	** : 어댑터 코드 ** : Adapter code (Mount code)	1단 Single					2단 Double				
		L1	L2	L3	L4	L5	L1	L2	L3	L4	L5
SMB060□□□-8** (입력축 내경 ≤ φ8) Input shaft bore ≤ φ8	AA·AC·AD·AF·AG	112	75	□52	15.5	32	131	94	□52	15.5	32
	AB·AE·AH·AJ·AK	117	80	□52	20.5	37	136	99	□52	20.5	37
	BA·BB·BD·BE	112	75	□60	15.5	32	131	94	□60	15.5	32
	BC·BF	117	80	□60	20.5	37	136	99	□60	20.5	37
	CA	117	80	□70	20.5	37	136	99	□70	20.5	37
SMB060□□□-14** (입력축 내경 ≤ φ14) Input shaft bore ≤ φ14	BA·BB·BD·BE·BF·BG·BJ·BK	115	78	□65	16.5	35	136	99	□65	16.5	35
	BC·BH·BM	120	83	□65	21.5	40	141	104	□65	21.5	40
	BL	125	88	□65	26.5	45	146	109	□65	26.5	45
	CA	115	78	□70	16.5	35	136	99	□70	16.5	35
	CB	120	83	□70	21.5	40	141	104	□70	21.5	40
	DA·DB·DC·DD·DF·DH	115	78	□80	16.5	35	136	99	□80	16.5	35
	DE	120	83	□80	21.5	40	141	104	□80	21.5	40
	DG	125	88	□80	26.5	45	146	109	□80	26.5	45
	EA·EB·EC	115	78	□90	16.5	35	136	99	□90	16.5	35
	ED	125	88	□90	26.5	45	146	109	□90	26.5	45
	FA	115	78	□100	16.5	35	136	99	□100	16.5	35
GA	115	78	□115	16.5	35	136	99	□115	16.5	35	
SMB060□□□-19** (입력축 내경 ≤ φ19) Input shaft bore ≤ φ19	DA·DB·DC	130	93	□80	25	50					
	DD	140	103	□80	35	60					
	DE	135	98	□80	30	55					
	EA	135	98	□90	30	55					
	EB	130	93	□90	25	50					
	EC	140	103	□90	35	60					
	FA	130	93	□100	25	50					
	FB	140	103	□100	35	60					
	GA·GC	135	98	□115	30	55					
	GB·GD	130	93	□115	25	50					
	HA	130	93	□130	25	50					
	HB	145	108	□130	40	65					
	HC·HD·HE	135	98	□130	30	55					

※ 1 1단 감속비: 1/3~1/10 ; 2단 감속비: 1/15~1/100

※ 2 모터 축과 감속기의 입력축 내경이 다를 경우에는 부싱이 삽입됩니다.

※ 1 Single reduction : 1/3 ~ 1/10, Double reduction : 1/15 ~ 1/100

※ 2 Bushing will be inserted to adapt to motor shaft.



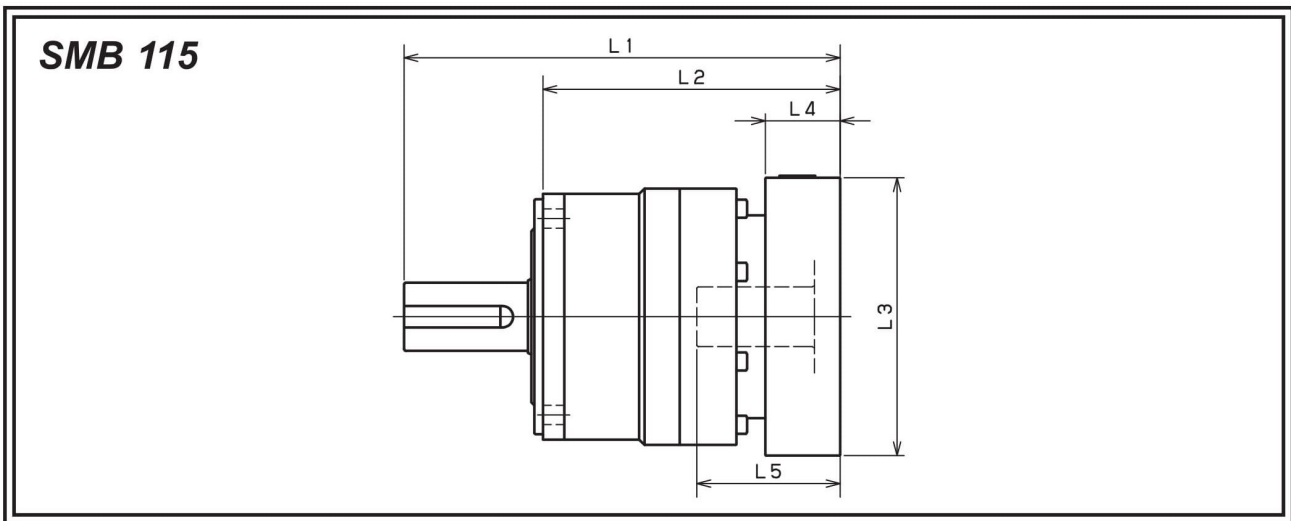
모델명 Model number	** : 어댑터 코드 ** : Adapter code (Mount code)	1단 Single					2단 Double				
		L1	L2	L3	L4	L5	L1	L2	L3	L4	L5
SMB090□□□-8** (입력축 내경 ≤ φ8) Input shaft bore ≤ φ8	AA·AC·AD·AF·AG	/	/	/	/	/	160	112	□52	15.5	32
	AB·AE·AH·AJ·AK	/	/	/	/	/	165	117	□52	20.5	37
	BA·BB·BD·BE	/	/	/	/	/	160	112	□60	15.5	32
	BC·BF	/	/	/	/	/	165	117	□60	20.5	37
	CA	/	/	/	/	/	165	117	□70	20.5	37
SMB090□□□-14** (입력축 내경 ≤ φ14) Input shaft bore ≤ φ14	BA·BB·BD·BE·BF·BG·BJ·BK	143	95	□65	16.5	35	165	117	□65	16.5	35
	BC·BH·BM	148	100	□65	21.5	40	170	122	□65	21.5	40
	BL	153	105	□65	26.5	45	175	127	□65	26.5	45
	CA	143	95	□70	16.5	35	165	117	□70	16.5	35
	CB	148	100	□70	21.5	40	170	122	□70	21.5	40
	DA·DB·DC·DD·DF·DH	143	95	□80	16.5	35	165	117	□80	16.5	35
	DE	148	100	□80	21.5	40	170	122	□80	21.5	40
	DG	153	105	□80	26.5	45	175	127	□80	26.5	45
	EA·EB·EC	143	95	□90	16.5	35	165	117	□90	16.5	35
	ED	153	105	□90	26.5	45	175	127	□90	26.5	45
	FA	143	95	□100	16.5	35	165	117	□100	16.5	35
	GA	143	95	□115	16.5	35	165	117	□115	16.5	35
SMB090□□□-19** (입력축 내경 ≤ φ19) Input shaft bore ≤ φ19	DA·DB·DC	153	105	□80	25	50	175	127	□80	25	50
	DD	163	115	□80	35	60	185	137	□80	35	60
	DE	158	110	□80	30	55	180	132	□80	30	55
	EA	158	110	□90	30	55	180	132	□90	30	55
	EB	153	105	□90	25	50	175	127	□90	25	50
	EC	163	115	□90	35	60	185	137	□90	35	60
	FA	153	105	□100	25	50	175	127	□100	25	50
	FB	163	115	□100	35	60	185	137	□100	35	60
	GA·GC	158	110	□115	30	55	180	132	□115	30	55
	GB·GD	153	105	□115	25	50	175	127	□115	25	50
	HA	153	105	□130	25	50	175	127	□130	25	50
	HB	168	120	□130	40	65	190	142	□130	40	65
	HC·HD·HE	158	110	□130	30	55	180	132	□130	30	55
SMB090□□□-28** (입력축 내경 ≤ φ28) Input shaft bore ≤ φ28	FA·FB·FC	170	122	□100	35	67	/	/	/	/	/
	GA·GB·GC·GD·GE·GF·GG	170	122	□115	35	67	/	/	/	/	/
	HA·HC·HD	170	122	□130	35	67	/	/	/	/	/
	HB	180	132	□130	45	77	/	/	/	/	/
	JA·JB·JC	170	122	□150	35	67	/	/	/	/	/
	KA·KB	170	122	□180	35	67	/	/	/	/	/
	KD	180	132	□180	45	77	/	/	/	/	/
	LA	170	122	□200	35	67	/	/	/	/	/
MA	170	122	□220	35	67	/	/	/	/	/	

※1 1단 감속비: 1/3~1/10 ; 2단 감속비: 1/15~1/100

※2 모터 축과 감속기의 입력축 내경이 다를 경우에는 부싱이 삽입됩니다.

※1 Single reduction : 1/3 ~ 1/10, Double reduction : 1/15 ~ 1/100

※2 Bushing will be inserted to adapt to motor shaft.



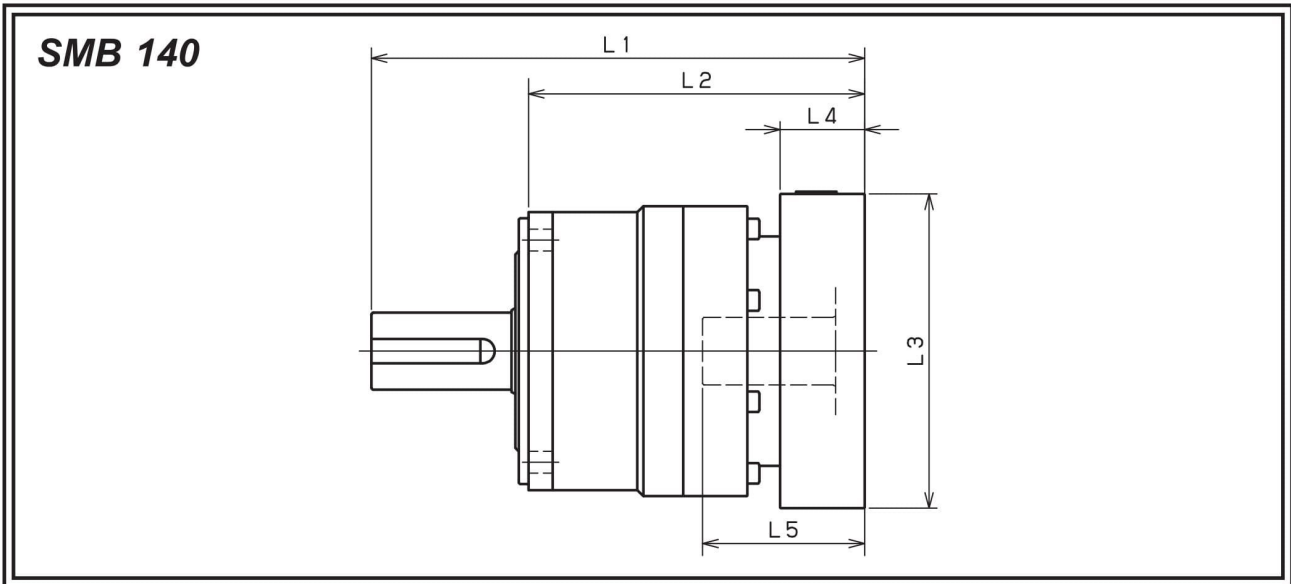
모델명 Model number	** : 어댑터 코드 ** : Adapter code (Mount code)	1단 Single					2단 Double				
		L1	L2	L3	L4	L5	L1	L2	L3	L4	L5
SMB115□□□-14** (입력축 내경 ≤ φ 14) Input shaft bore ≤ φ 14	BA·BB·BD·BE·BF·BG·BJ·BK	/	/	/	/	/	204.5	139.5	□65	16.5	35
	BC·BH·BM	/	/	/	/	/	209.5	144.5	□65	21.5	40
	BL	/	/	/	/	/	214.5	149.5	□65	26.5	45
	CA	/	/	/	/	/	204.5	139.5	□70	16.5	35
	CB	/	/	/	/	/	209.5	144.5	□70	21.5	40
	DA·DB·DC·DD·DF·DH	/	/	/	/	/	204.5	139.5	□80	16.5	35
	DE	/	/	/	/	/	209.5	144.5	□80	21.5	40
	DG	/	/	/	/	/	214.5	149.5	□80	26.5	45
	EA·EB·EC	/	/	/	/	/	204.5	139.5	□90	16.5	35
	ED	/	/	/	/	/	214.5	149.5	□90	26.5	45
	FA	/	/	/	/	/	204.5	139.5	□100	16.5	35
	GA	/	/	/	/	/	204.5	139.5	□115	16.5	35
SMB115□□□-19** (입력축 내경 ≤ φ 19) Input shaft bore ≤ φ 19	DA·DB·DC	187	122	□80	25	50	214.5	149.5	□80	25	50
	DD	197	132	□80	35	60	224.5	159.5	□80	35	60
	DE	192	127	□80	30	55	219.5	154.5	□80	30	55
	EA	192	127	□90	30	55	219.5	154.5	□90	30	55
	EB	187	122	□90	25	50	214.5	149.5	□90	25	50
	EC	197	132	□90	35	60	224.5	159.5	□90	35	60
	FA	187	122	□100	25	50	214.5	149.5	□100	25	50
	FB	197	132	□100	35	60	224.5	159.5	□100	35	60
	GA·GC	192	127	□115	30	55	219.5	154.5	□115	30	55
	GB·GD	187	122	□115	25	50	214.5	149.5	□115	25	50
	HA	187	122	□130	25	50	214.5	149.5	□130	25	50
	HB	202	137	□130	40	65	229.5	164.5	□130	40	65
HC·HD·HE	192	127	□130	30	55	219.5	154.5	□130	30	55	
SMB115□□□-28** (입력축 내경 ≤ φ 28) Input shaft bore ≤ φ 28	FA·FB·FC	204	139	□100	35	67	231.5	166.5	□100	35	67
	GA·GB·GC·GD·GE·GF·GG	204	139	□115	35	67	231.5	166.5	□115	35	67
	HA·HC·HD	204	139	□130	35	67	231.5	166.5	□130	35	67
	HB	214	149	□130	45	77	241.5	176.5	□130	45	77
	JA·JB·JC	204	139	□150	35	67	231.5	166.5	□150	35	67
	KA·KB	204	139	□180	35	67	231.5	166.5	□180	35	67
	KD	214	149	□180	45	77	241.5	176.5	□180	45	77
	LA	204	139	□200	35	67	231.5	166.5	□200	35	67
SMB115□□□-38** (입력축 내경 ≤ φ 38) Input shaft bore ≤ φ 38	MA	204	139	□220	35	67	231.5	166.5	□220	35	67
	HA	225	160	□130	45	82	/	/	/	/	/
	HB	220	155	□130	40	77	/	/	/	/	/
	JA	225	160	□150	45	82	/	/	/	/	/
	KA·KB·KC	225	160	□180	45	82	/	/	/	/	/
	LA	225	160	□200	45	82	/	/	/	/	/
	LB	235	170	□200	55	92	/	/	/	/	/
MA·MB	225	160	□220	45	82	/	/	/	/	/	
NA	225	160	□250	45	82	/	/	/	/	/	

※ 1 1단 감속비: 1/3~1/10 ; 2단 감속비: 1/15~1/100

※ 2 모터 축과 감속기의 입력축 내경이 다를 경우에는 부싱이 삽입됩니다.

※ 1 Single reduction : 1/3 ~ 1/10, Double reduction : 1/15 ~ 1/100

※ 2 Bushing will be inserted to adapt to motor shaft.



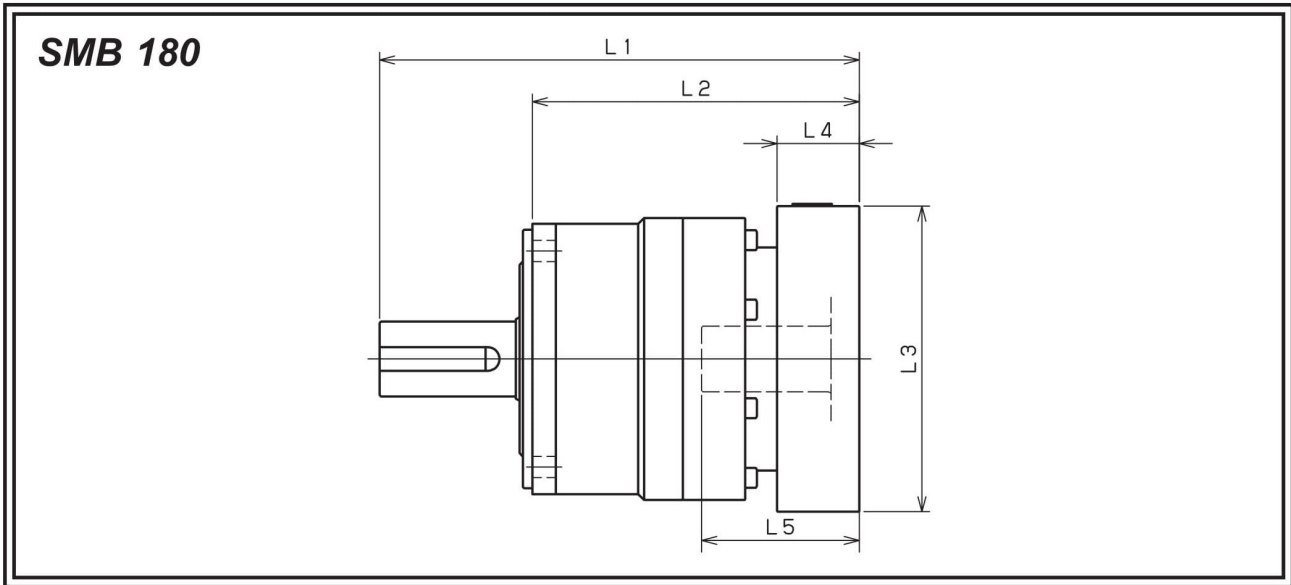
모델명 Model number	** : 어댑터 코드 ** : Adapter code (Mount code)	1단 Single					2단 Double				
		L1	L2	L3	L4	L5	L1	L2	L3	L4	L5
SMB140□□□-19** (입력축 내경 $\leq \phi 19$) Input shaft bore $\leq \phi 19$	DA·DB·DC	/	/	/	/	/	266.5	169.5	□80	25	50
	DD	/	/	/	/	/	276.5	179.5	□80	35	60
	DE	/	/	/	/	/	271.5	174.5	□80	30	55
	EA	/	/	/	/	/	271.5	174.5	□90	30	55
	EB	/	/	/	/	/	266.5	169.5	□90	25	50
	EC	/	/	/	/	/	276.5	179.5	□90	35	60
	FA	/	/	/	/	/	266.5	169.5	□100	25	50
	FB	/	/	/	/	/	276.5	179.5	□100	35	60
	GA·GC	/	/	/	/	/	271.5	174.5	□115	30	55
	GB·GD	/	/	/	/	/	266.5	169.5	□115	25	50
	HA	/	/	/	/	/	266.5	169.5	□130	25	50
	HB	/	/	/	/	/	281.5	184.5	□130	40	65
	HC·HD·HE	/	/	/	/	/	271.5	174.5	□130	30	55
	SMB140□□□-28** (입력축 내경 $\leq \phi 28$) Input shaft bore $\leq \phi 28$	FA·FB·FC	249	152	□100	35	67	283.5	186.5	□100	35
GA·GB·GC·GD·GE·GF·GG		249	152	□115	35	67	283.5	186.5	□115	35	67
HA·HC·HD		249	152	□130	35	67	283.5	186.5	□130	35	67
HB		259	162	□130	45	77	293.5	196.5	□130	45	77
JA·JB·JC		249	152	□150	35	67	283.5	186.5	□150	35	67
KA·KB		249	152	□180	35	67	283.5	186.5	□180	35	67
KD		259	162	□180	45	77	293.5	196.5	□180	45	77
LA		249	152	□200	35	67	283.5	186.5	□200	35	67
SMB140□□□-38** (입력축 내경 $\leq \phi 38$) Input shaft bore $\leq \phi 38$	MA	249	152	□220	35	67	283.5	186.5	□220	35	67
	HA	264	167	□130	45	82	298.5	201.5	□130	45	82
	HB	259	162	□130	40	77	293.5	196.5	□130	40	77
	JA	264	167	□150	45	82	298.5	201.5	□150	45	82
	KA·KB·KC	264	167	□180	45	82	298.5	201.5	□180	45	82
	LA	264	167	□200	45	82	298.5	201.5	□200	45	82
	LB	274	177	□200	55	92	308.5	211.5	□200	55	92
SMB140□□□-48** (입력축 내경 $\leq \phi 48$) Input shaft bore $\leq \phi 48$	MA·MB	264	167	□220	45	82	298.5	201.5	□220	45	82
	NA	264	167	□250	45	82	298.5	201.5	□250	45	82
	KB·KC	285	188	□180	55	98	/	/	/	/	/
	KA	305	208	□180	75	118	/	/	/	/	/
	LA	285	188	□200	55	98	/	/	/	/	/
	MA	285	188	□220	55	98	/	/	/	/	/
	MB	305	208	□220	75	118	/	/	/	/	/
NA	305	208	□250	75	118	/	/	/	/	/	
PA	305	208	□280	75	118	/	/	/	/	/	

※ 1 1단 감속비: 1/3~1/10 ; 2단 감속비: 1/15~1/100

※ 2 모터 축과 감속기의 입력축 내경이 다를 경우에는 부싱이 삽입됩니다.

※ 1 Single reduction : 1/3 ~ 1/10, Double reduction : 1/15 ~ 1/100

※ 2 Bushing will be inserted to adapt to motor shaft.



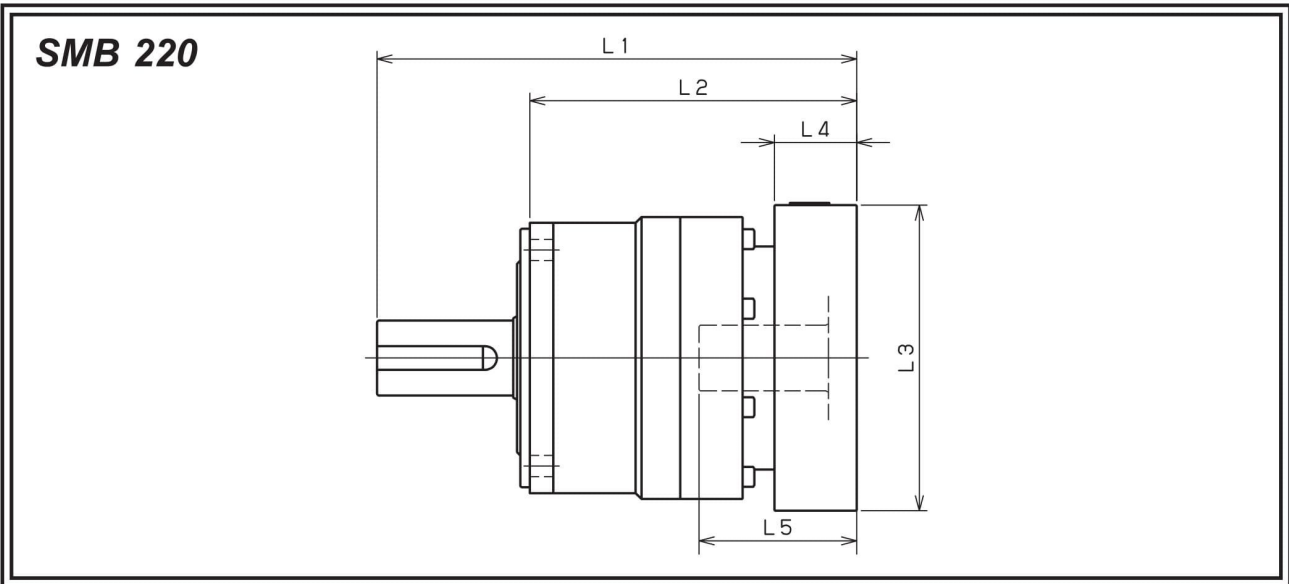
모델명 Model number	** : 어댑터 코드 ** : Adapter code (Mount code)	1단 Single					2단 Double				
		L1	L2	L3	L4	L5	L1	L2	L3	L4	L5
SMB180□□□-28** 〔 입력축 내경 ≤ φ28 〕 Input shaft bore ≤ φ28	FA·FB·FC	/	/	/	/	/	316	211	□100	35	67
	GA·GB·GC·GD·GE·GF·GG	/	/	/	/	/	316	211	□115	35	67
	HA·HC·HD	/	/	/	/	/	316	211	□130	35	67
	HB	/	/	/	/	/	326	221	□130	45	77
	JA·JB·JC	/	/	/	/	/	316	211	□150	35	67
	KA·KB	/	/	/	/	/	316	211	□180	35	67
	KD	/	/	/	/	/	326	221	□180	45	77
	LA	/	/	/	/	/	316	211	□200	35	67
MA	/	/	/	/	/	316	211	□220	35	67	
SMB180□□□-38** 〔 입력축 내경 ≤ φ38 〕 Input shaft bore ≤ φ38	HA	286.5	181.5	□130	45	82	331	226	□130	45	82
	HB	281.5	176.5	□130	40	77	326	221	□130	40	77
	JA	286.5	181.5	□150	45	82	331	226	□150	45	82
	KA·KB·KC	286.5	181.5	□180	45	82	331	226	□180	45	82
	LA	286.5	181.5	□200	45	82	331	226	□200	45	82
	LB	296.5	191.5	□200	55	92	341	236	□200	55	92
	MA·MB	286.5	181.5	□220	45	82	331	226	□220	45	82
NA	286.5	181.5	□250	45	82	331	226	□250	45	82	
SMB180□□□-48** 〔 입력축 내경 ≤ φ48 〕 Input shaft bore ≤ φ48	KB·KC	302.5	197.5	□180	55	98	347	242	□180	55	98
	KA	322.5	217.5	□180	75	118	367	262	□180	75	118
	LA	302.5	197.5	□200	55	98	347	242	□200	55	98
	MA	302.5	197.5	□220	55	98	347	242	□220	55	98
	MB	322.5	217.5	□220	75	118	367	262	□220	75	118
	NA	322.5	217.5	□250	75	118	367	262	□250	75	118
SMB180□□□-65** 〔 입력축 내경 ≤ φ65 〕 Input shaft bore ≤ φ65	PA	322.5	217.5	□280	75	118	367	262	□280	75	118
	MA·MB·MC·MD	334	229	□220	80	122	/	/	/	/	/
	NA	334	229	□250	80	122	/	/	/	/	/
	PA	354	249	□280	100	142	/	/	/	/	/
	PB	364	259	□280	110	152	/	/	/	/	/
QA	354	249	□320	100	142	/	/	/	/	/	

※ 1 1단 감속비: 1/3~1/10 ; 2단 감속비: 1/15~1/100

※ 2 모터 축과 감속기의 입력축 내경이 다를 경우에는 부싱이 삽입됩니다.

※ 1 Single reduction : 1/3 ~ 1/10, Double reduction : 1/15 ~ 1/100

※ 2 Bushing will be inserted to adapt to motor shaft.



모델명 Model number	** : 어댑터 코드 ** : Adapter code (Mount code)	1단 Single					2단 Double				
		L1	L2	L3	L4	L5	L1	L2	L3	L4	L5
SMB220□□□-38** (입력축 내경 ≤ φ38) Input shaft bore	HA	/	/	/	/	/	366.5	228.5	□130	45	82
	HB	/	/	/	/	/	361.5	223.5	□130	40	77
	JA	/	/	/	/	/	366.5	228.5	□150	45	82
	KA·KB·KC	/	/	/	/	/	366.5	228.5	□180	45	82
	LA	/	/	/	/	/	366.5	228.5	□200	45	82
	LB	/	/	/	/	/	376.5	238.5	□200	55	92
	MA·MB NA	/	/	/	/	/	366.5	228.5	□220	45	82
SMB220□□□-48** (입력축 내경 ≤ φ48) Input shaft bore	KB·KC	347.5	209.5	□180	55	98	382.5	244.5	□180	55	98
	KA	367.5	229.5	□180	75	118	402.5	264.5	□180	75	118
	LA	347.5	209.5	□200	55	98	382.5	244.5	□200	55	98
	MA	347.5	209.5	□220	55	98	382.5	244.5	□220	55	98
	MB	367.5	229.5	□220	75	118	402.5	264.5	□220	75	118
	NA	367.5	229.5	□250	75	118	402.5	264.5	□250	75	118
	PA	367.5	229.5	□280	75	118	402.5	264.5	□280	75	118
SMB220□□□-65** (입력축 내경 ≤ φ65) Input shaft bore	MA·MB·MC·MD	371.5	233.5	□220	80	122	/	/	/	/	/
	NA	371.5	233.5	□250	80	122	/	/	/	/	/
	PA	391.5	253.5	□280	100	142	/	/	/	/	/
	PB	401.5	263.5	□280	110	152	/	/	/	/	/
	QA	391.5	253.5	□320	100	142	/	/	/	/	/

※ 1 1단 감속비: 1/3~1/10 ; 2단 감속비: 1/15~1/100

※ 2 모터 축과 감속기의 입력축 내경이 다를 경우에는 부싱이 삽입됩니다.

※ 1 Single reduction : 1/3 ~ 1/10, Double reduction : 1/15 ~ 1/100

※ 2 Bushing will be inserted to adapt to motor shaft.