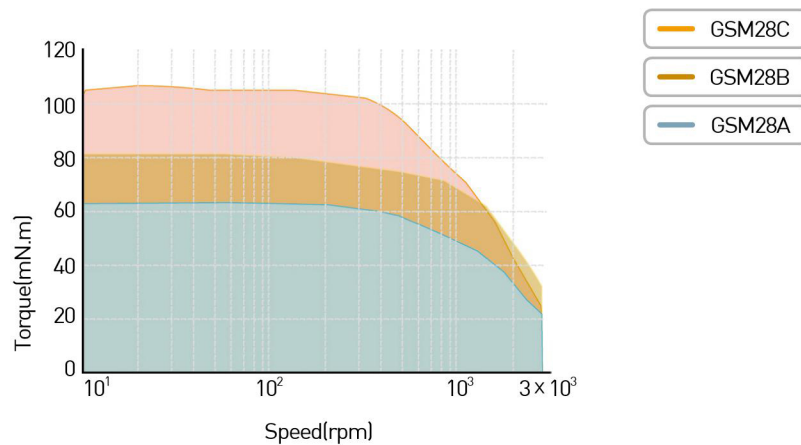
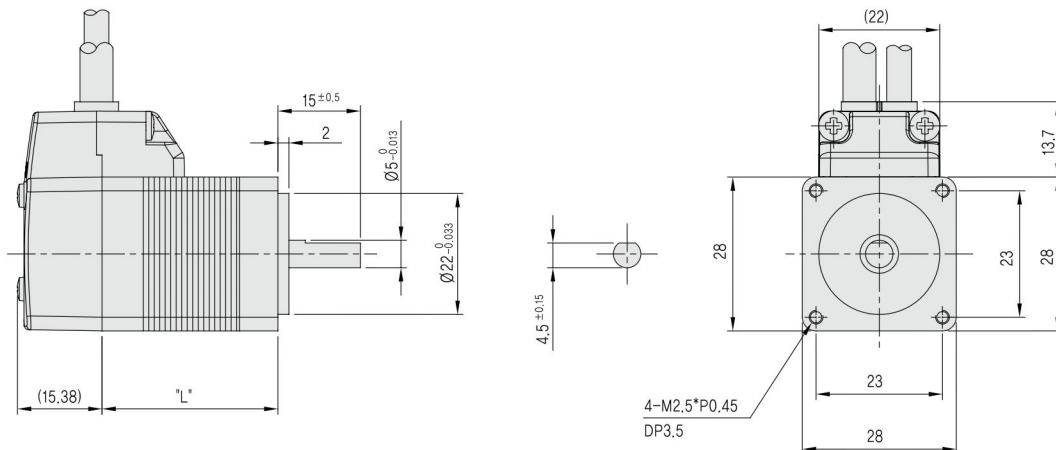


▶ 모터 사양과 토크 특성 (Motor specification and Torque characteristic)

MODEL	UNIT	GSM28AD	GSM28BD	GSM28CD
DRIVE METHOD	-	BI-POLAR		
NUMBER OF PHASES	-	2		
VOLTAGE	VDC	3.8	4.56	6.2
CURRENT per PHASE	A	0.67	0.67	0.67
RESISTANCE per PHASE	Ohm	5.6	6.8	9.2
INDUCTANCE per PHASE	mH	3.4	4.9	7.2
HOLDING TORQUE	N.m	0.059	0.093	0.117
ROTOR INERTIA	g-cm ²	9	12	18
WEIGHTS	Kg	0.11	0.14	0.2
AMBIENT TEMPERATURE	°C	-20°C ~ +50°C		
LENGTH (L)	mm	32±1	45±1	51±1



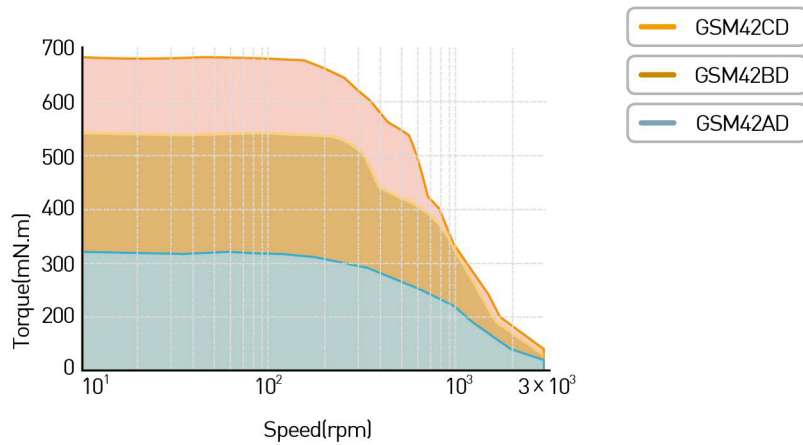
▶ 모터 크기 (Motor Size) (mm)



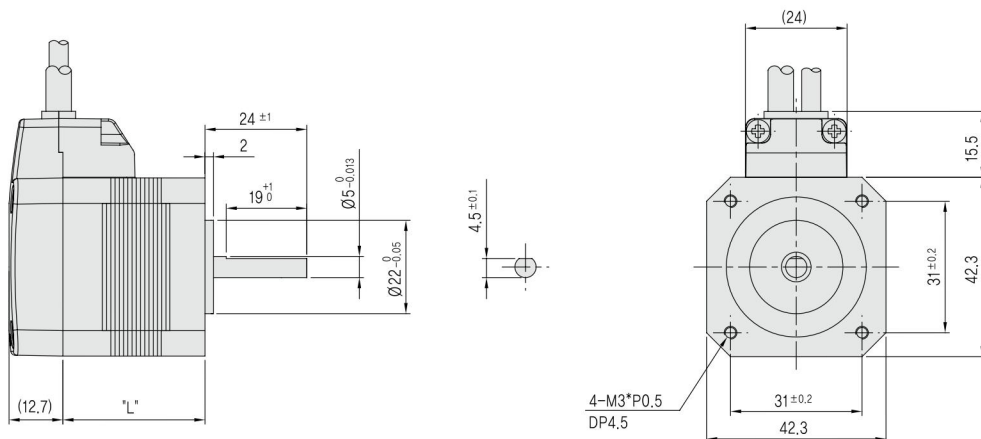
▶ 모터 사양과 토크 특성 (Motor specification and Torque characteristic)

□ 42

MODEL	UNIT	GSM42AD	GSM42BD	GSM42CD
DRIVE METHOD	-	BI-POLAR		
NUMBER OF PHASES	-	2		
VOLTAGE	VDC	2.76	3.84	8.76
CURRENT per PHASE	A	1.2	1.2	1.2
RESISTANCE per PHASE	Ohm	2.3	3.2	7.3
INDUTANCE per PHASE	mH	3.4	6	16.6
HOLDING TORQUE	N.m	0.22	0.44	0.78
ROTOR INERTIA	g-cm ²	35	68	102
WEIGHTS	Kg	0.22	0.35	0.5
AMBIENT TEMPERATURE	°C	-20°C ~ +50°C		
LENGTH (L)	mm	33.5±1	47.5±1	60±1

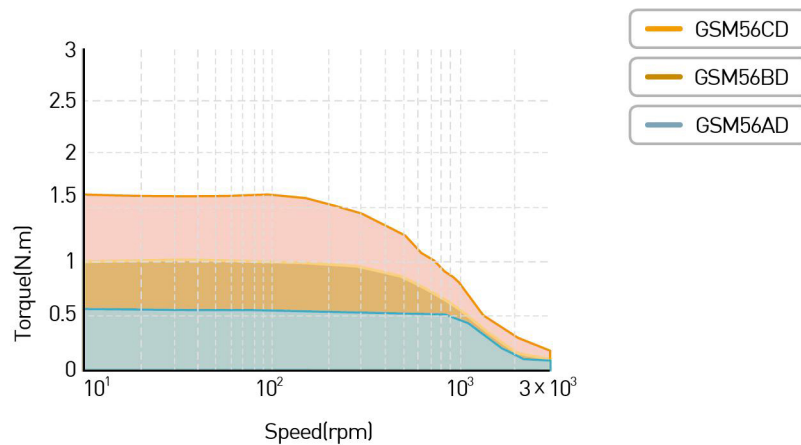


▶ 모터 크기 (Motor Size) (mm)

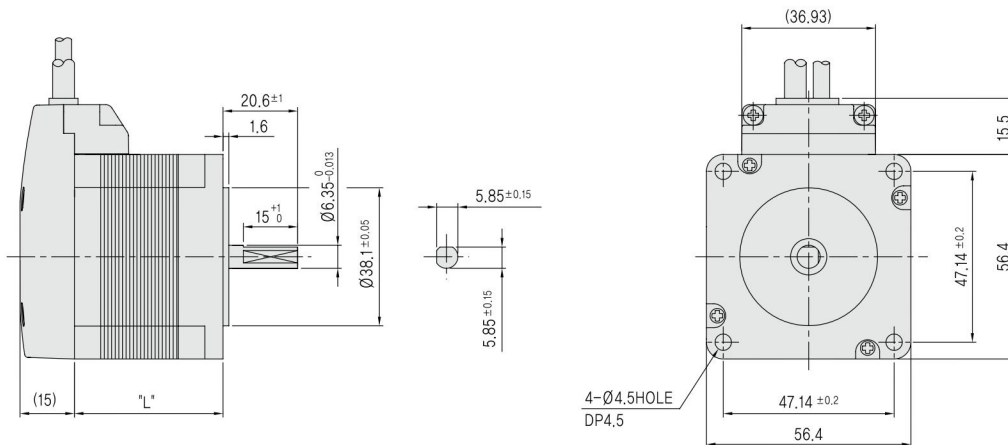


▶ 모터 사양과 토크 특성 (Motor specification and Torque characteristic)

MODEL	UNIT	GSM56AD	GSM56BD	GSM56CD
DRIVE METHOD	-	BI-POLAR		
NUMBER OF PHASES	-	2		
VOLTAGE	VDC	2	2.5	3.2
CURRENT per PHASE	A	2.8	2.8	2.8
RESISTANCE per PHASE	Ohm	0.7	0.9	1.13
INDUTANCE per PHASE	mH	1.4	2.5	3.6
HOLDING TORQUE	N.m	0.55	1.26	1.89
ROTOR INERTIA	g-cm ²	131	300	480
WEIGHTS	Kg	0.37	0.7	1
AMBIENT TEMPERATURE	°C	-20°C ~ +50°C		
LENGTH (L)	mm	41±1	56±1	76±1



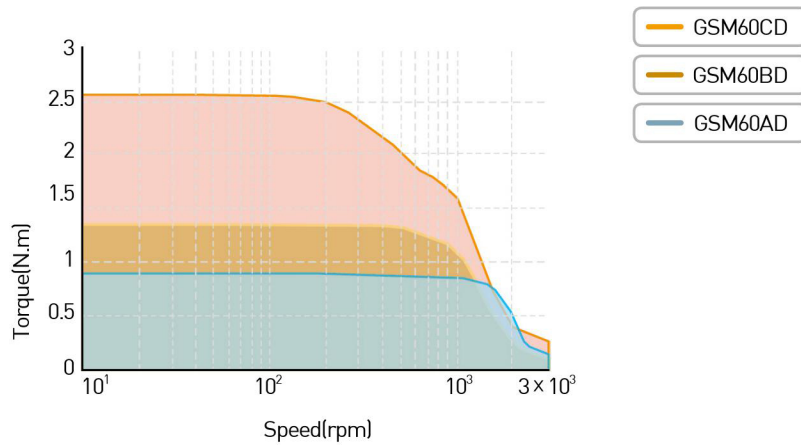
▶ 모터 크기 (Motor Size)(mm)



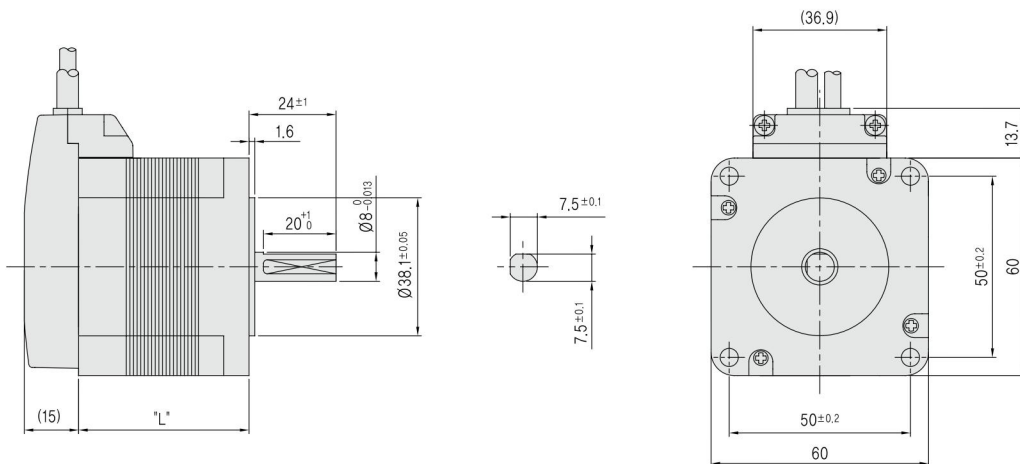
▶ 모터 사양과 토크 특성 (Motor specification and Torque characteristic)

□ 60

MODEL	UNIT	GSM60AD	GSM60BD	GSM60CD
DRIVE METHOD	-	BI-POLAR		
NUMBER OF PHASES	-	2		
VOLTAGE	VDC	1.36	1.6	2.8
CURRENT per PHASE	A	4	4	4
RESISTANCE per PHASE	Ohm	0.34	0.4	0.7
INDUTANCE per PHASE	mH	0.8	1.38	3.5
HOLDING TORQUE	N.m	1	1.4	2.4
ROTOR INERTIA	g-cm ²	275	450	840
WEIGHTS	Kg	0.6	0.77	1.4
AMBIENT TEMPERATURE	°C	-20°C ~ +50°C		
LENGTH (L)	mm	47±1	56±1	88±1

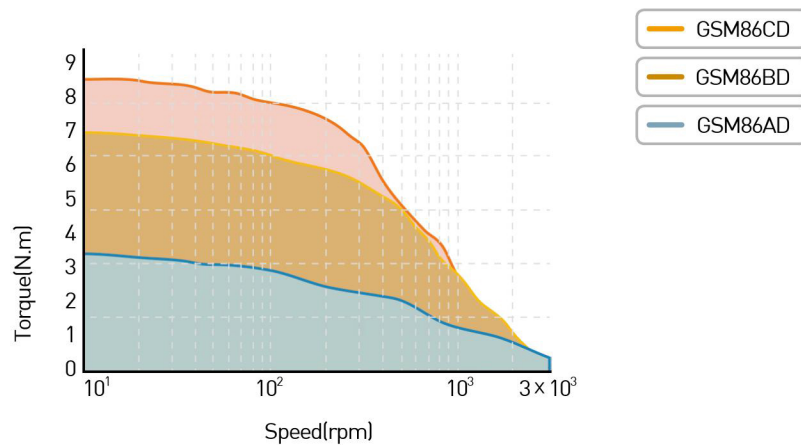


▶ 모터 크기 (Motor Size) (mm)



▶ 모터 사양과 토크 특성 (Motor specification and Torque characteristic)

MODEL	UNIT	GSM86AD	GSM86BD	GSM86CD
DRIVE METHOD	-	BI-POLAR		
NUMBER OF PHASES	-	2		
VOLTAGE	VDC	1.8	1.8	2.4
CURRENT per PHASE	A	6	6	6
RESISTANCE per PHASE	Ohm	0.3	0.3	0.4
INDUTANCE per PHASE	mH	2.8	3.1	4.6
HOLDING TORQUE	N.m	4.6	7.8	10.5
ROTOR INERTIA	g-cm ²	1400	2700	4000
WEIGHTS	Kg	2.3	3.8	5.3
AMBIENT TEMPERATURE	°C	-20°C ~ +50°C		
LENGTH (L)	mm	78±1	115±1	155±1



▶ 모터 크기 (Motor Size) (mm)

