

# BLDC Motor | [ ADL-5846 ] AC Input Brushless DC Motor

## 특징 FEATURES



2-Phase : Unipolar

1-Phase : Bipolar

- ◆ **Application** : Refrigerator Evaporator or Condenser fan motor
- ◆ **Input Voltage** : AC 115V, AC 220-240V
- ◆ **Motor type** : Single Phase or 2Phase
- ◆ **Drive type** : Sensor
- ◆ **Output Rotation** : C.W or C.C.W
- ◆ **Protection** : Impedance Protected
- ◆ **Insulation Class** : A (105°C)
- ◆ **Frame Material** : Noryl
- ◆ **Lead wire exit** : Variable

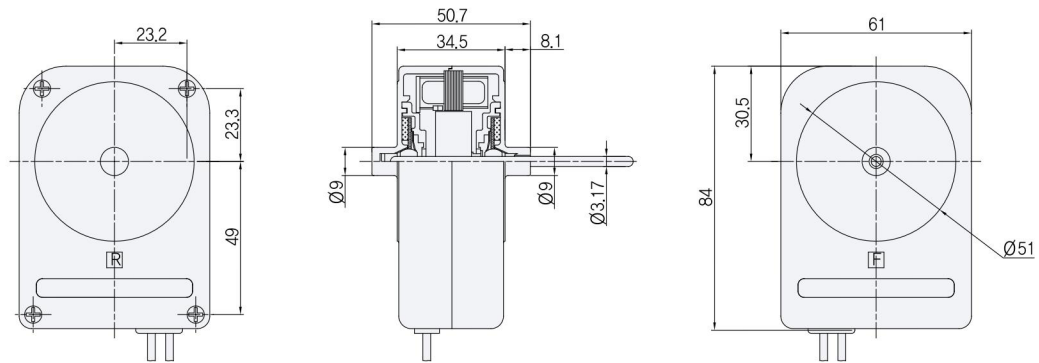
◆ **Certification** : c us

## ● SPECIFICATION

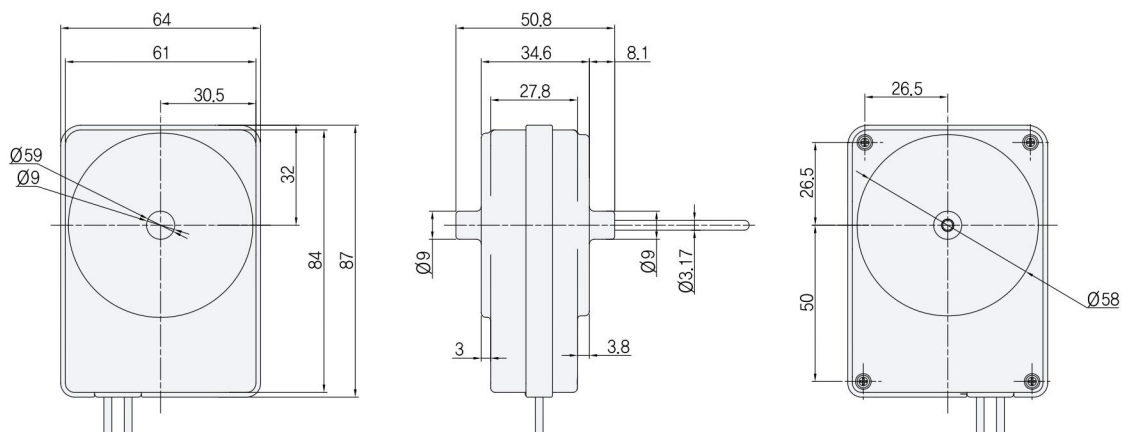
Model	Voltage (V)	Frequency (Hz)	Output Watts [W]	Speed [r/min]	Efficiency (%)	Shaft Diameter (mm)	Frame Material	Status
ADL-5846 TYPE ( 2-Phase : Unipolar )	AC 115	60	~ 2.0 Max.	~ 2700	~ 45 Max.	Φ3.17	Noryl	Present
	AC 220-240	50/60	~ 2.0 Max.	~ 2700	~ 45 Max.	Φ3.17	Noryl	Present
ADL-5846 TYPE ( 1-Phase : Bipolar )	AC 115	60	~ 2.0 Max.	~ 2700	~ 50 Max.	Φ3.17	Noryl	Present
	AC 220-240	50/60	~ 2.0 Max.	~ 2700	~ 50 Max.	Φ3.17	Noryl	Present

## ● DIMENSIONS ▷ ADL-5846 TYPE ( 2-Phase : Unipolar )

Unit : mm



## ▷ ADL-5846 TYPE ( 1-Phase : Bipolar )



# BLDC Motor | [ ADL-5848 ] AC Input Brushless DC Motor

## 특징 FEATURES



2-Phase : Unipolar

1-Phase : Bipolar

- ◆ **Application** : Refrigerator condenser fan motor
- ◆ **Input Voltage** : AC 115V, AC 220-240V
- ◆ **Motor type** : Single Phase or 2Phase
- ◆ **Drive type** : Sensor
- ◆ **Output Rotation** : C.W or C.C.W
- ◆ **Protection** : Impedance Protected
- ◆ **Insulation Class** : A (105°C)
- ◆ **Frame Material** : PBT
- ◆ **Lead wire exit** : Variable

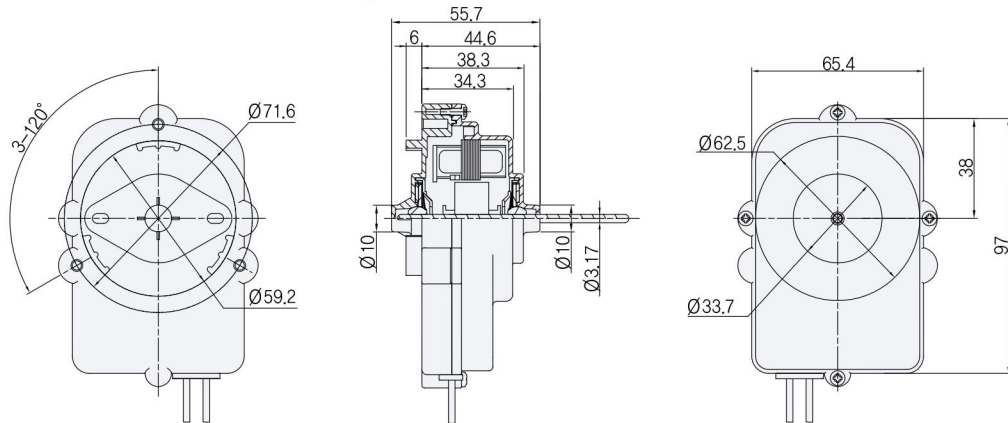
◆ **Certification** : 

## ● SPECIFICATION

Model	Voltage (V)	Frequency (Hz)	Output Watts [W]	Speed [r/min]	Efficiency (%)	Shaft Diameter (mm)	Frame Material	Status
ADL-5848 TYPE ( 2-Phase : Unipolar )	AC 115	60	~ 2.0 Max.	~ 1500	~ 45 Max.	Φ3.17	PBT	Present
	AC 220-240	50/60	~ 2.0 Max.	~ 1500	~ 45 Max.	Φ3.17	PBT	Present
ADL-5848 TYPE ( 1-Phase : Bipolar )	AC 115	60	~ 2.0 Max.	~ 1500	~ 50 Max.	Φ3.17	PBT	Present
	AC 220-240	50/60	~ 2.0 Max.	~ 1500	~ 50 Max.	Φ3.17	PBT	Present

## ● DIMENSIONS ▷ ADL-5848 TYPE ( 2-Phase : Unipolar )

Unit : mm



## ▷ ADL-5848 TYPE ( 1-Phase : Bipolar )

