



프리미엄효율 (Premium Efficiency)

## PCH Series 3-Phase

2.2kW

## ■ SPECIFICATION

## ■ MOTOR

출력 Output (kW)	기종명 Model Name	극수 Poles	전압 Voltage (V)	주파수 Freq. (Hz)	정격 부하 [Rated Load]			사용 조건 Duty	보호 등급 Degrees of protection	절연 등급 Insulation Classification	냉각 방식 Protective Cooling System
					전류 Current (A)	모터속도 Speed (r/min)	효율 Efficiency (%)				
2.2	PCH□-□-□220R4□	4	220/380	60	8.10/4.70	1755	89.5	CONT.	IP55 (IP40)	F	Totally Enclosed Fan-Cooled
				50	9.00	1460	86.7				
	PCH□-□-□220W6□	4	220	8.10	1755	89.5					
			50	4.80/4.75	1465/1465	86.7/86.7					
	PCH□-□-□220X6□	4	380/400	4.40/4.30	1755/1760	89.5/89.5					
			400/440	60	4.40/4.30	1755/1760	89.5/89.5				

- Brake 부착 Geared Motor는 방수방진 등급이 IP40 비방수형 제품과 IP55 방수형 제품의 2가지 Model 이 있습니다.(The Brake Geared Motor is divided into 2 models: one is a non-water proof product with IP40 while the other is a waterproof product with IP55.)
- IP40 모델과 IP55 모델의 전기적 특성 사양은 동일합니다.(The Models with IP40 and IP55 have the same electric characteristics.)

## ■ GEARED MOTOR – 50Hz

Frame No.	55											
감속비 (Reduction gear ratio)	5	7.5	10	12.5	15	20	25	30	40	50	60	
회전 속도 (Rotation speed (r/min))	300	200	150	120	100	75	60	50	37.5	30	25	
허용 토크 (Allowable torque)	kgf · m	6.20	9.32	12.4	15.5	18.6	24.9	31.1	37.3	49.7	62.1	74.5
	N · m	60.8	91.4	122	152	182	244	305	366	487	609	731
허용 (Allowable) O.H.L	kgf	550	585	620	635	650	670	700	730	730	769	769
	N	5390	5733	6076	6223	6370	6566	6860	7154	7154	7546	7546

## ■ GEARED MOTOR – 60Hz

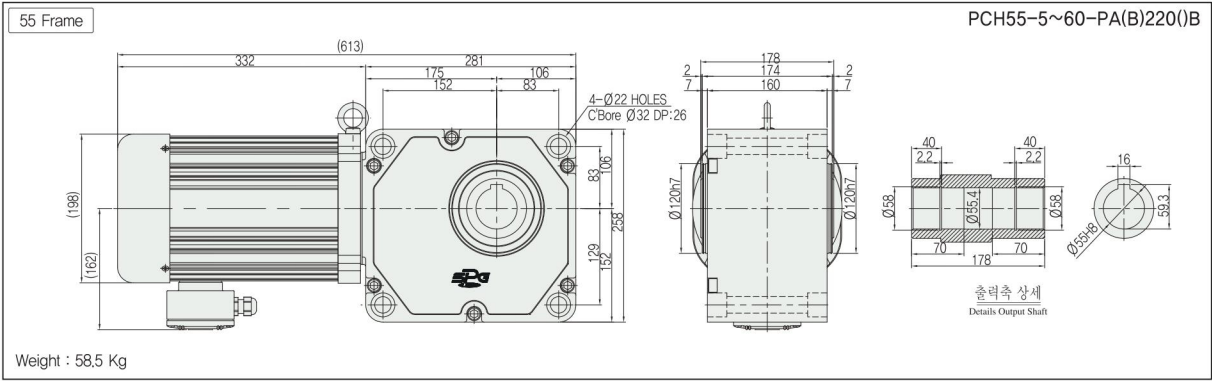
Frame No.	55											
감속비 (Reduction gear ratio)	5	7.5	10	12.5	15	20	25	30	40	50	60	
회전 속도 (Rotation speed (r/min))	360	240	180	144	120	90	72	60	45	36	30	
허용 토크 (Allowable torque)	kgf · m	5.20	7.75	10.3	13.0	15.5	20.8	25.9	31.1	41.4	51.8	62.2
	N · m	51	76	101	127	152	204	254	305	406	508	610
허용 (Allowable) O.H.L	kgf	550	585	620	635	650	670	700	730	730	769	769
	N	5390	5733	6076	6223	6370	6566	6860	7154	7154	7546	7546

- Note) • “★” 표시된 감속비의 제품은 Permissible Torque(허용토크)가 제한됩니다.(Permissible Torque is limited for products with a mark “★” of reduction gear ratio)
- Permissible O.H.L (허용 Overhung 하중)의 적용은 출력축 Shaft 인출 길이의 중심부 기준임.(Permissible O.H.L (allowable overhung load) is based on the central part of the outlet length for output shaft)
  - ■ 색 부의 회전방향은 □ 색 부의 방향과 반대방향 입니다.(Rotation direction of color ■ is opposite of other color □)
  - Self Locking (자립 잠김)은 작동하지 않습니다.(Self Locking is unavailable.)

기종명 (Model Name) Coding  
▶ 73Page출력축 사양 (Specification for output shaft)  
▶ 100Page기술자료 (Technological Data)  
▶ 101Page

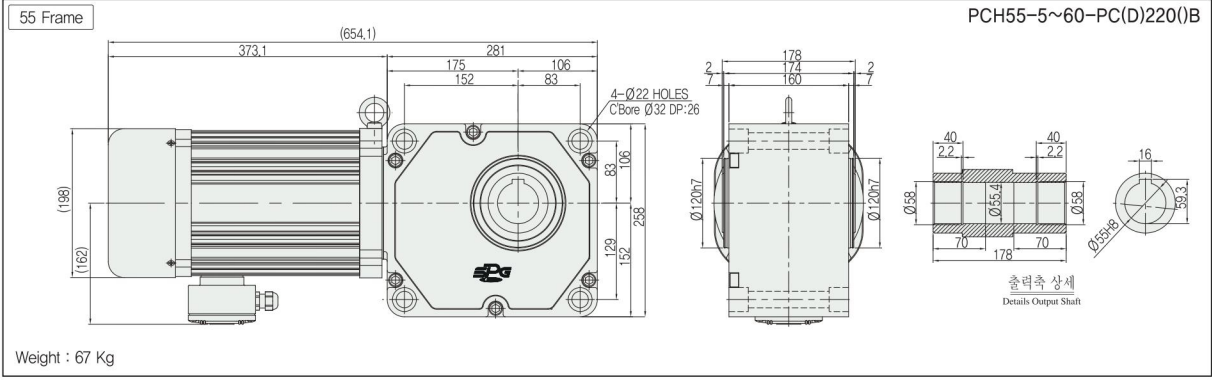
■ PCH TYPE DIMENSIONS [ Lead Box Type & Terminal Box Type ]

UNIT = mm



■ PCH TYPE DIMENSIONS [ Brake Type ]

UNIT = mm



기종명 (Model Name) Coding  
▶ 73Page

출력축 사양 (Specification for output shaft)  
▶ 100Page

기술자료 (Technological Data)  
▶ 101Page