



PAF Series 3-Phase

0.2kW

■ SPECIFICATION

■ MOTOR

출력 Output (kW)	기종명 Model Name	극수 Poles	전압 Voltage (V)	주파수 Freq. (Hz)	정격 부하 [Rated Load]			사용 조건 Duty	보호 등급 Degrees of protection	절연 등급 Insulation Classification	냉각 방식 Protective Cooling System
					전류 Current (A)	모터속도 Speed (r/min)	효율 Efficiency (%)				
0.2	PAF□-□-M□020R4□	4	220/380	60	1.10/0.60	1715	71.5	CONT.	IP55 (IP40)	F	Totally Enclosed Fan-Cooled
	PAF□-□-M□020W6□	4	200	50	1.10	1415	71.7				
		4	200/220	60	1.00/1.00	1690/1715	72.8/73.2				
	PAF□-□-M□020X6□	4	380/400	50	0.60/0.60	1410/1420	71.0/67.2				
		4	400/440	60	0.50/0.50	1700/1720	70.8/73.4				

- Brake 부착 Geared Motor는 방수방진 등급이 IP40 비방수형 제품과 IP55 방수형 제품의 2가지 Model 이 있습니다.(The Brake Geared Motor is divided into 2 models: one is a non-water proof product with IP40 while the other is a waterproof product with IP55.)
- IP40 모델과 IP55 모델의 전기적 특성 사양은 동일합니다.(The Models with IP40 and IP55 have the same electric characteristics.)

■ GEARED MOTOR – 50Hz

Frame No.	18					22					28					
감속비 (Reduction gear ratio)	5	10	15	20	25	30	40	50	60	80	100	100	120	160	200	
회전 속도 (Rotation speed (r/min))	300	150	100	75	60	50	37.5	30	25	18.8	15	15	12.5	9.4	7.5	
허용 토크 (Allowable torque)	kgf · m	0.62	1.2	1.9	2.5	3.1	3.7	4.8	6	7.2	9.6	9.9	11.9	14.3	19.1	23.9
	N · m	6.1	11.8	18.6	24.5	30.4	36.3	47	58.8	70.6	94.1	97	117	140	187	234
허용 (Allowable) O.H.L	kgf	60	90	100	120	130	180	190	200	220	250	250	290	340	350	350
	N	588	882	980	1180	1270	1760	1860	1960	2160	2450	2450	2840	3330	3430	3430

■ GEARED MOTOR – 60Hz

Frame No.	18					22					28					
감속비 (Reduction gear ratio)	5	10	15	20	25	30	40	50	60	80	100	100	120	160	200	
회전 속도 (Rotation speed (r/min))	360	180	120	90	72	60	45	36	30	22.5	18	18	15	11.2	9	
허용 토크 (Allowable torque)	kgf · m	0.51	1	1.5	2.1	2.6	3.1	4	5	6	8	8.2	10	11.9	15.9	19.9
	N · m	5	9.8	14.7	20.6	25.5	30.4	39.2	49	58.8	78.4	80.4	98	117	156	195
허용 (Allowable) O.H.L	kgf	60	90	100	120	130	180	190	200	220	250	250	290	340	350	350
	N	588	882	980	1180	1270	1760	1860	1960	2160	2450	2450	2840	3330	3430	3430

- Note) • Permissible O.H.L (허용 Overhung 하중)의 적용은 출력축 Shaft 인출 길이의 중심부 기준임.(Permissible O.H.L (allowable overhung load) is based on the central part of the outlet length for output shaft)
- 회전 방향은 ■ 색이 Motor의 회전방향과 동일 방향이고, 나머지는 Motor 회전방향과 반대방향 입니다.(■ Color indicates the same direction of motor rotation, while other color indicates the opposite direction of motor rotation.)

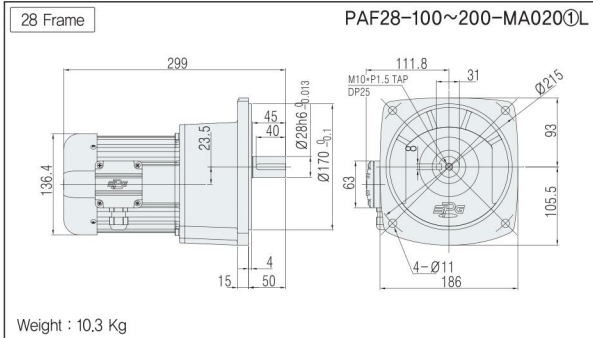
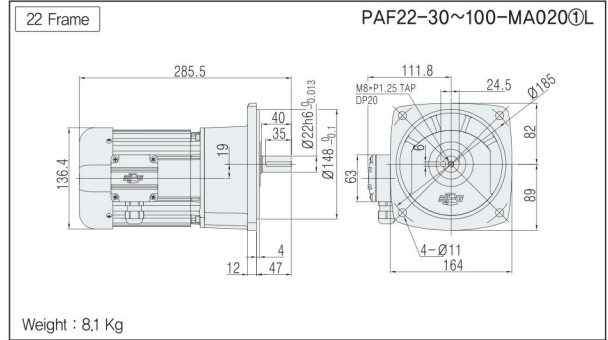
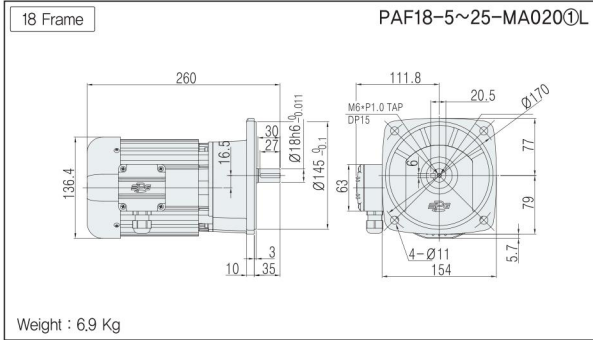
기종명 (Model Name) Coding
▶ 36Page

출력축 사양 (Specification for output shaft)
▶ 70Page

기술자료 (Technological Data)
▶ 101Page

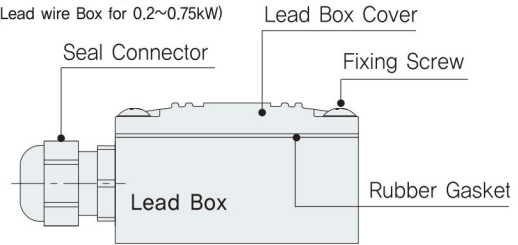
UNIT = mm

■ PAF TYPE DIMENSIONS [Lead Box Type]



• 기종명 구분(Model type) ① : 전원(Power) (Voltage & Frequency)

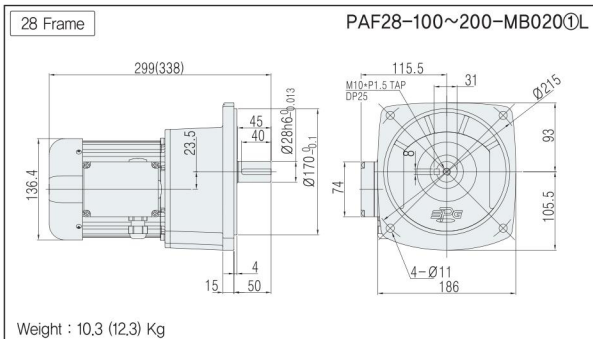
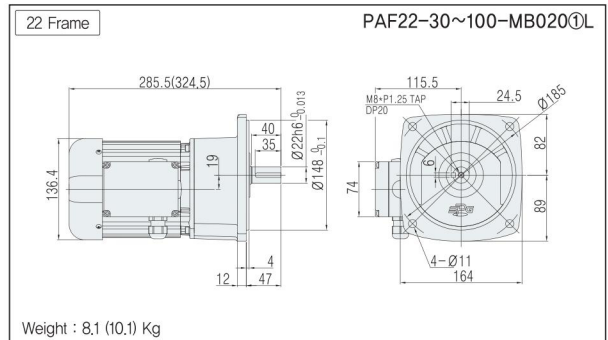
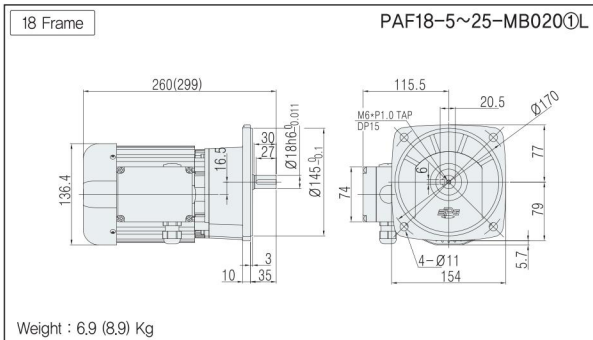
■ 0.2~0.75kW용 리드 박스
(Lead wire Box for 0.2~0.75kW)



■ PAF TYPE DIMENSIONS [Terminal Box Type]

- Note) • IP40 모델과 IP55 모델의 외관 치수는 동일합니다.(Dimensions for IP40 model and IP55 model are the same.)
 • BRAKE 부착 모델은 Terminal Box Type 을 기본으로 적용하고 있으며, Lead Box Type 은 적용하고 있지 않습니다. (The brake-attached model is applied to the Terminal Box Type for basic features, but does not apply to the lead wire box type.)
 • Dimensions 내의 () 치수 및 중량은 Brake 부착 모델의 사양입니다.(Dimension and weight in dimensions is for brake attached model specification)

UNIT = mm



• 기종명 구분(Model type) ① : 모터옵션(Motor option) (B, C, D)
 ② : 전원(Power) (Voltage & Frequency)

■ 0.2~0.75kW용 리드 박스
(Lead wire Box for 0.2~0.75kW)

