



프리미엄효율 (Premium Efficiency)

## PCH Series 3-Phase

0.75kW

## ■ SPECIFICATION

## ■ MOTOR

출력 Output (kW)	기종명 Model Name	극수 Poles	전압 Voltage (V)	주파수 Freq. (Hz)	정격 부하 [Rated Load]			사용 조건 Duty	보호 등급 Degrees of protection	절연 등급 Insulation Classification	냉각 방식 Protective Cooling System
					전류 Current (A)	모터속도 Speed (r/min)	효율 Efficiency (%)				
0.75	PCH□-□-P□075R4□	4	220/380	60	3.10/1.80	1725	83.5	CONT.	IP55 (IP40)	F	Totally Enclosed Fan-Cooled
			200	50	3.6	1425	82.5				
	PCH□-□-P□075W6□	4	220	60	3.20	1730	83.5				
			380/400	50	1.80/1.80	1415/1425	82.5/82.5				
	PCH□-□-P□075X6□	4	400/440	60	1.65/1.60	1710/1730	83.5/83.5				

- Brake 부착 Geared Motor는 방수방진 등급이 IP40 비방수형 제품과 IP55 방수형 제품의 2가지 Model 이 있습니다.(The Brake Geared Motor is divided into 2 models: one is a non-water proof product with IP40 while the other is a waterproof product with IP55.)
- IP40 모델과 IP55 모델의 전기적 특성 사양은 동일합니다.(The Models with IP40 and IP55 have the same electric characteristics.)

## ■ GEARED MOTOR – 50Hz

Frame No.	35											45						
감속비 (Reduction gear ratio)	5	7.5	10	12.5	15	20	25	30	40	50	60	80	100	120	160	★200	★240	
회전 속도 (Rotation speed (r/min))	300	200	150	120	100	75	60	50	37.5	30	25	18.8	15	12.5	9.4	7.5	6.3	
허용 토크 (Allowable torque)	kgf · m	2.10	3.15	4.20	5.30	6.39	8.49	10.6	12.6	16.9	21.2	25.4	33.1	41.4	49.7	61.4	61.4	65.5
	N · m	20.6	30.9	41.2	52	62.7	83.3	104	124	166	208	249	325	406	487	602	602	642
허용 (Allowable) O.H.L	kgf	330	355	380	379	410	430	450	460	480	480	480	540	540	540	540	540	540
	N	3234	3479	3724	3721	4018	4214	4410	4508	4704	4704	4704	5292	5292	5292	5292	5292	5292

## ■ GEARED MOTOR – 60Hz

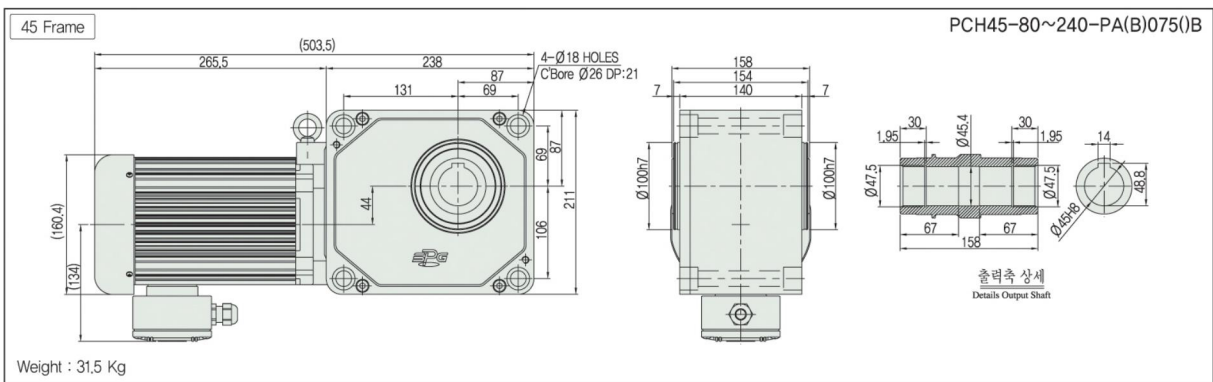
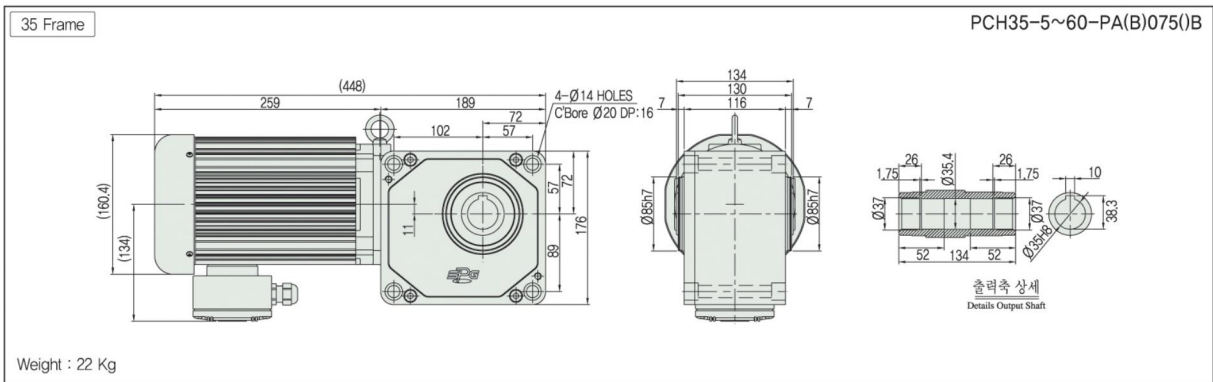
Frame No.	35											45						
감속비 (Reduction gear ratio)	5	7.5	10	12.5	15	20	25	30	40	50	60	80	100	120	160	★200	★240	
회전 속도 (Rotation speed (r/min))	360	240	180	144	120	90	72	60	45	36	30	22.5	18	15	11.3	9	7.5	
허용 토크 (Allowable torque)	kgf · m	1.79	2.65	3.50	4.39	5.29	7.10	8.79	10.6	14.1	17.6	21.2	27.6	34.5	41.4	51.2	51.2	54.6
	N · m	17.6	26	34.3	43.1	51.9	69.6	86.2	104	138	173	208	271	338	406	502	502	535
허용 (Allowable) O.H.L	kgf	330	355	380	379	410	430	450	460	480	480	480	540	540	540	540	540	540
	N	3234	3479	3724	3721	4018	4214	4410	4508	4704	4704	4704	5292	5292	5292	5292	5292	5292

- Note) • “★” 표시된 감속비의 제품은 Permissible Torque(허용토크)가 제한됩니다.(Permissible Torque is limited for products with a mark “★” of reduction gear ratio)
- Permissible O.H.L (허용 Overhung 하중)의 적용은 출력축 Shaft 인출 길이의 중심부 기준임.(Permissible O.H.L (allowable overhung load) is based on the central part of the outlet length for output shaft)
  - ■ 색 부의 회전방향은 □ 색 부의 방향과 반대방향 입니다.(Rotation direction of color ■ is opposite of other color □)
  - Self Locking (자립 잠김)은 작동하지 않습니다.(Self Locking is unavailable.)

기종명 (Model Name) Coding  
▶ 73Page출력축 사양 (Specification for output shaft)  
▶ 100Page기술자료 (Technological Data)  
▶ 101Page

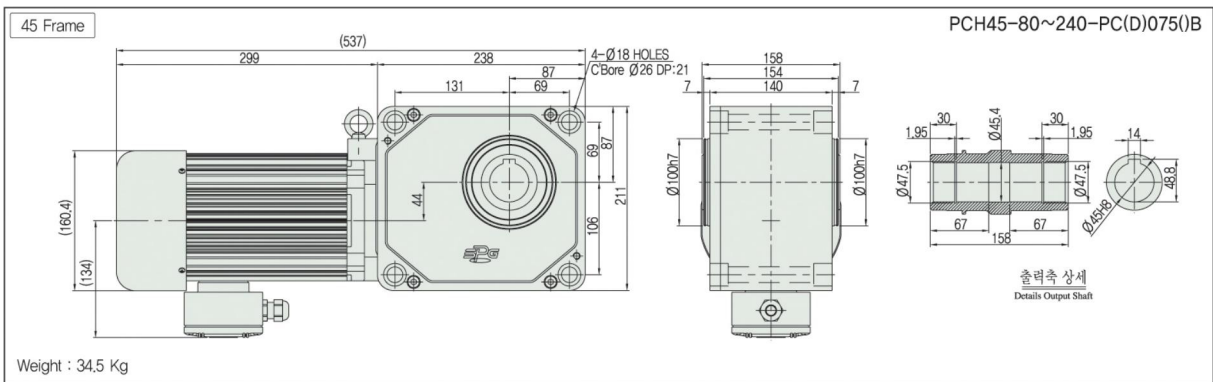
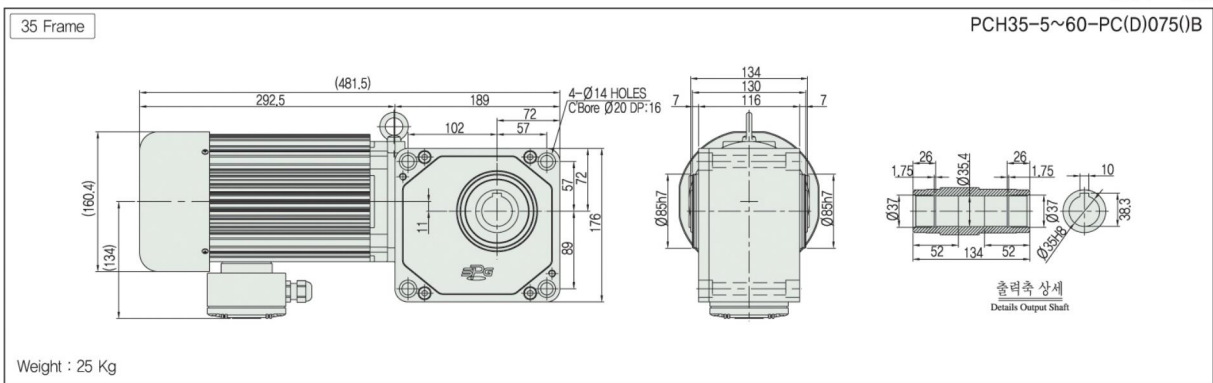
■ PCH TYPE DIMENSIONS [ Lead Box Type & Terminal Box Type ]

UNIT = mm



■ PCH TYPE DIMENSIONS [ Brake Type ]

UNIT = mm



기종명 (Model Name) Coding  
▶ 73Page

출력축 사양 (Specification for output shaft)  
▶ 100Page

기술자료 (Technological Data)  
▶ 101Page